



Photo Science, Inc.

# CONTROL REFERENCE SUMMARY

<b>Project Name:</b> Woodford County GIS		<b>Agency:</b> VMWC Planning	
<b>Quad Sheet:</b> Versailles	<b>County:</b> Woodford	<b>State:</b> KY	<b>Date Set:</b> 10/1/2004
<b>Station:</b> 196	<b>Type of Mark:</b> Concrete Monument	<b>Stamping on Mark:</b> 196	<b>Established By:</b> Photo Science, Inc.
<b>Elev (USFeet)</b> 868.06	<b>Elev (M):</b> 264.585	<b>Datum:</b> NAVD88	
<b>Northing (USFeet)</b> 220,648.57	<b>Easting (USFeet)</b> 1,529,990.82	<b>Datum:</b> KY North	
<b>Northing (M)</b> 67,253.819	<b>Easting (M)</b> 466,342.135	<b>Datum:</b> KY North	
<b>Latitude:</b> 38°06'19.00022"N	<b>Longitude:</b> 84°38'01.54547"W	<b>Datum:</b> NAD83	
<b>Ahead Station:</b>	<b>Ahead Azimuth:</b> °   '   "	<b>Ahead Distance:</b>	
<b>Back Station:</b> 196 AZ	<b>Back Azimuth:</b> 256 ° 52 ' 09 "	<b>Back Distance:</b> 719.32	
<b>Data Entry:</b> GB	<b>Checked By:</b> MEM	<b>Date:</b> 11/30/2004	

- A: 33.8' TO PLANK FENCE CORNER
- B: 14.2' TO CENTER OF OLD FRANKFORT PIKE
- C: 52.3' TO A POWER POLE

## Point #196

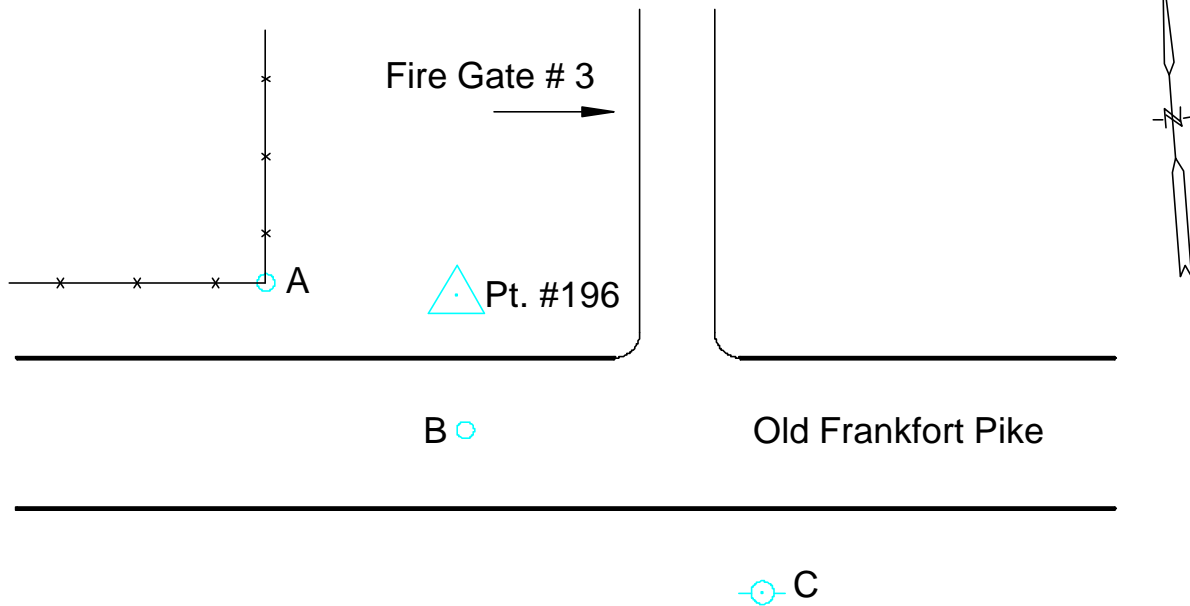




Photo Science, Inc.

# CONTROL REFERENCE SUMMARY

<b>Project Name:</b> Woodford County GIS		<b>Agency:</b> VMWC Planning	
<b>Quad Sheet:</b> Versailles	<b>County:</b> Woodford	<b>State:</b> KY	<b>Date Set:</b> 10/1/2004
<b>Station:</b> 196 AZ	<b>Type of Mark:</b> Concrete Monument	<b>Stamping on Mark:</b> 196 AZ	<b>Established By:</b> Photo Science, Inc.
<b>Elev (USFeet)</b> 857.10	<b>Elev (M):</b> 261.245	<b>Datum:</b> NAVD88	
<b>Northing (USFeet)</b> 220,485.16	<b>Easting (USFeet)</b> 1,529,290.31	<b>Datum:</b> KY North	
<b>Northing (M)</b> 67,204.011	<b>Easting (M)</b> 466,128.619	<b>Datum:</b> KY North	
<b>Latitude:</b> 38°06'17.35587"N	<b>Longitude:</b> 84°38'10.30092"W	<b>Datum:</b> NAD83	
<b>Ahead Station:</b> 196	<b>Ahead Azimuth:</b> 76 ° 52' 09 "	<b>Ahead Distance:</b> 719.32	
<b>Back Station:</b>	<b>Back Azimuth:</b> ° ' "	<b>Back Distance:</b>	
<b>Data Entry:</b> GB	<b>Checked By:</b> MEM	<b>Date:</b> 11/30/2004	

- A: 3.0' TO PLANK FENCE
- B: 23.2' TO FENCE CORNER
- C: 37.6' TO A POWER POLE

## Point #196 AZ

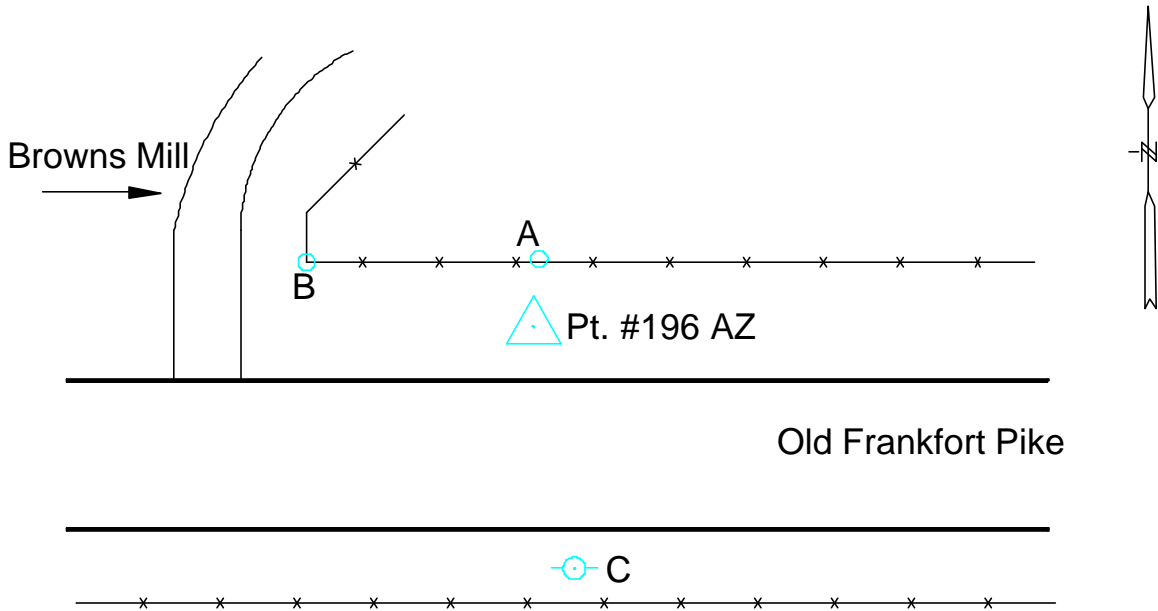




Photo Science, Inc.

# CONTROL REFERENCE SUMMARY

<b>Project Name:</b> Woodford County GIS		<b>Agency:</b> VMWC Planning	
<b>Quad Sheet:</b> Versailles	<b>County:</b> Woodford	<b>State:</b> KY	<b>Date Set:</b> 10/1/2004
<b>Station:</b> 197	<b>Type of Mark:</b> Concrete Monument	<b>Stamping on Mark:</b> 197	<b>Established By:</b> Photo Science, Inc.
<b>Elev (USFeet)</b> 892.29	<b>Elev (M):</b> 271.971	<b>Datum:</b> NAVD88	
<b>Northing (USFeet)</b> 221,347.92	<b>Easting (USFeet)</b> 1,522,296.44	<b>Datum:</b> KY North	
<b>Northing (M)</b> 67,466.981	<b>Easting (M)</b> 463,996.883	<b>Datum:</b> KY North	
<b>Latitude:</b> 38°06'25.58582"N	<b>Longitude:</b> 84°39'37.84808"W	<b>Datum:</b> NAD83	
<b>Ahead Station:</b>	<b>Ahead Azimuth:</b> °   '   "	<b>Ahead Distance:</b>	
<b>Back Station:</b> 197 AZ	<b>Back Azimuth:</b> 289 ° 24 ' 21 "	<b>Back Distance:</b> 634.60	
<b>Data Entry:</b> GB	<b>Checked By:</b> MEM	<b>Date:</b> 11/30/2004	

A: 3.3' TO ROCK WALL

B: 12.8' TO CENTER OF OLD FRANKFORT PIKE

C: 74.2' TO MULTI-PRONG 3" WILD CHERRY TREE

## Point #197

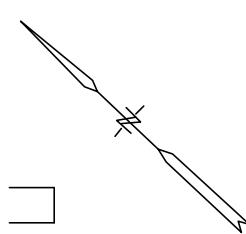
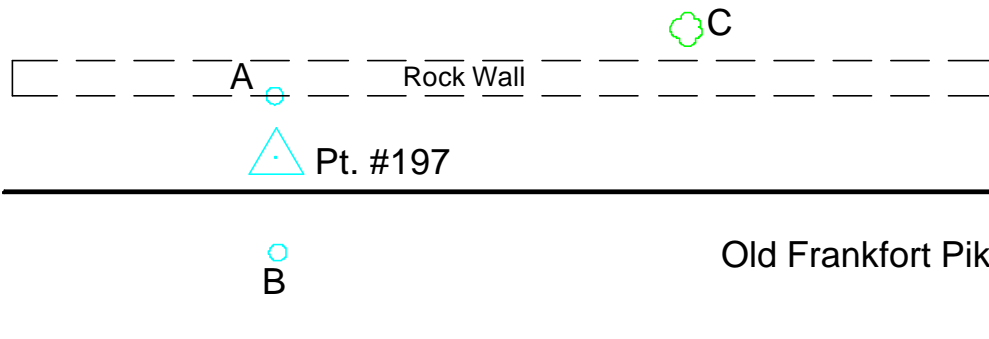




Photo Science, Inc.

# CONTROL REFERENCE SUMMARY

<b>Project Name:</b> Woodford County GIS		<b>Agency:</b> VMWC Planning	
<b>Quad Sheet:</b> Versailles	<b>County:</b> Woodford	<b>State:</b> KY	<b>Date Set:</b> 10/1/2004
<b>Station:</b> 197 AZ	<b>Type of Mark:</b> Concrete Monument	<b>Stamping on Mark:</b> 197 AZ	<b>Established By:</b> Photo Science, Inc.
<b>Elev (USFeet)</b> 918.44	<b>Elev (M):</b> 279.941	<b>Datum:</b> NAVD88	
<b>Northing (USFeet)</b> 221,558.77	<b>Easting (USFeet)</b> 1,521,697.89	<b>Datum:</b> KY North	
<b>Northing (M)</b> 67,531.248	<b>Easting (M)</b> 463,814.445	<b>Datum:</b> KY North	
<b>Latitude:</b> 38°06'27.64379"N	<b>Longitude:</b> 84°39'45.34847"W	<b>Datum:</b> NAD83	
<b>Ahead Station:</b> 197	<b>Ahead Azimuth:</b> 109 ° 24' 21 "	<b>Ahead Distance:</b> 634.6	
<b>Back Station:</b>	<b>Back Azimuth:</b> ° ' "	<b>Back Distance:</b>	
<b>Data Entry:</b> GB	<b>Checked By:</b> MEM	<b>Date:</b> 11/30/2004	

- A: 14.5' TO PLANK FENCE
- B: 33.4' TO A 24" WALNUT TREE
- C: 16.1' TO CENTER OF OLD FRANKFORT PIKE

## Point #197 AZ

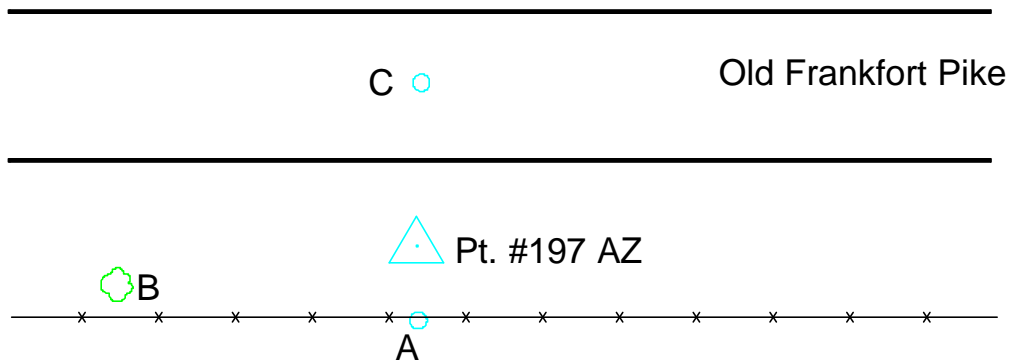
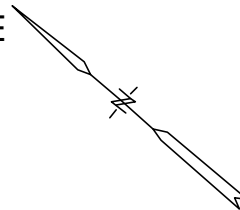




Photo Science, Inc.

# CONTROL REFERENCE SUMMARY

<b>Project Name:</b> Woodford County GIS		<b>Agency:</b> VMWC Planning	
<b>Quad Sheet:</b> Versailles	<b>County:</b> Woodford	<b>State:</b> KY	<b>Date Set:</b> 10/1/2004
<b>Station:</b> 198	<b>Type of Mark:</b> Concrete Monument	<b>Stamping on Mark:</b> 198	<b>Established By:</b> Photo Science, Inc.
<b>Elev (USFeet)</b> 926.75	<b>Elev (M):</b> 282.474	<b>Datum:</b> NAVD88	
<b>Northing (USFeet)</b> 208,291.52	<b>Easting (USFeet)</b> 1,517,284.65	<b>Datum:</b> KY North	
<b>Northing (M)</b> 63,487.382	<b>Easting (M)</b> 462,469.286	<b>Datum:</b> KY North	
<b>Latitude:</b> 38°04'16.28941"N	<b>Longitude:</b> 84°40'39.79305"W	<b>Datum:</b> NAD83	
<b>Ahead Station:</b>	<b>Ahead Azimuth:</b> °   '   "	<b>Ahead Distance:</b>	
<b>Back Station:</b> 198 AZ	<b>Back Azimuth:</b> 103 ° 25 ' 48 "	<b>Back Distance:</b> 667.58	
<b>Data Entry:</b> GB	<b>Checked By:</b> MEM	<b>Date:</b> 11/30/2004	

- A: 5.2' TO A CARSONITE POST @ FENCE
- B: 44.1' TO A 18" WALNUT TREE
- C: 84.1' TO A 24" WALNUT TREE

## Point #198

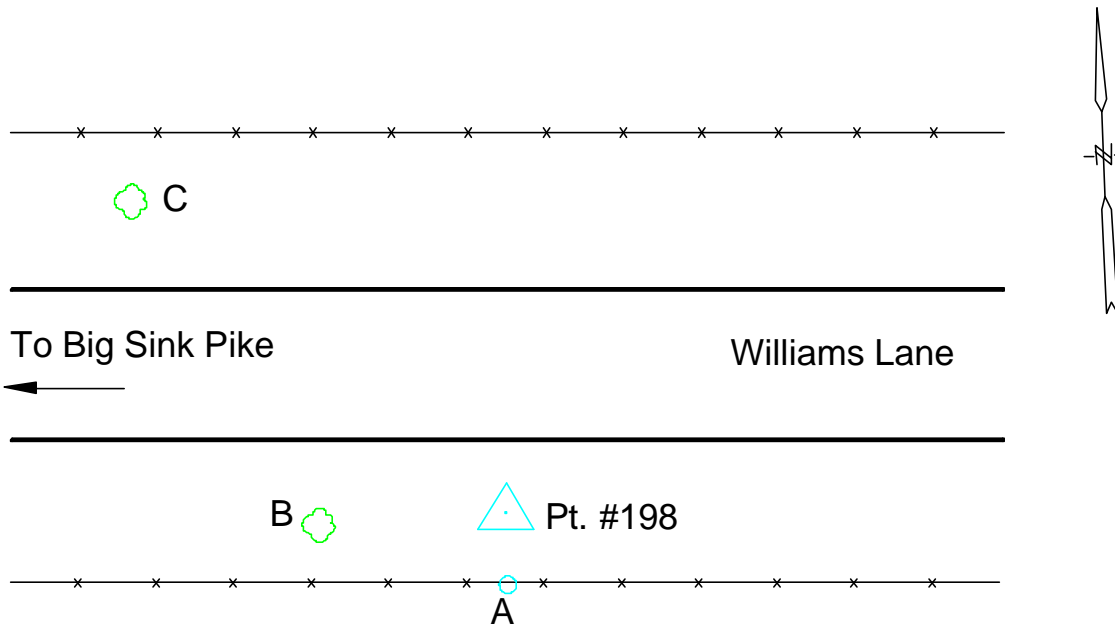




Photo Science, Inc.

# CONTROL REFERENCE SUMMARY

<b>Project Name:</b> Woodford County GIS		<b>Agency:</b> VMWC Planning	
<b>Quad Sheet:</b> Versailles	<b>County:</b> Woodford	<b>State:</b> KY	<b>Date Set:</b> 10/1/2004
<b>Station:</b> 198 AZ	<b>Type of Mark:</b> Concrete Monument	<b>Stamping on Mark:</b> 198 AZ	<b>Established By:</b> Photo Science, Inc.
<b>Elev (USFeet)</b> 941.90	<b>Elev (M):</b> 287.092	<b>Datum:</b> NAVD88	
<b>Northing (USFeet)</b> 208,136.47	<b>Easting (USFeet)</b> 1,517,933.97	<b>Datum:</b> KY North	
<b>Northing (M)</b> 63,440.123	<b>Easting (M)</b> 462,667.199	<b>Datum:</b> KY North	
<b>Latitude:</b> 38°04'14.78641"N	<b>Longitude:</b> 84°40'31.66440"W	<b>Datum:</b> NAD83	
<b>Ahead Station:</b> 198	<b>Ahead Azimuth:</b> 283 ° 25' 48 "	<b>Ahead Distance:</b> 667.58	
<b>Back Station:</b>	<b>Back Azimuth:</b> ° ' "	<b>Back Distance:</b>	
<b>Data Entry:</b> GB	<b>Checked By:</b> MEM	<b>Date:</b> 11/30/2004	

- A: 33.4' TO CENTER OF 12" CMP
- B: 23.9' TO CORNER FENCE POST
- C: 14.0' TO A CARSONITE POST

## Point #198 AZ

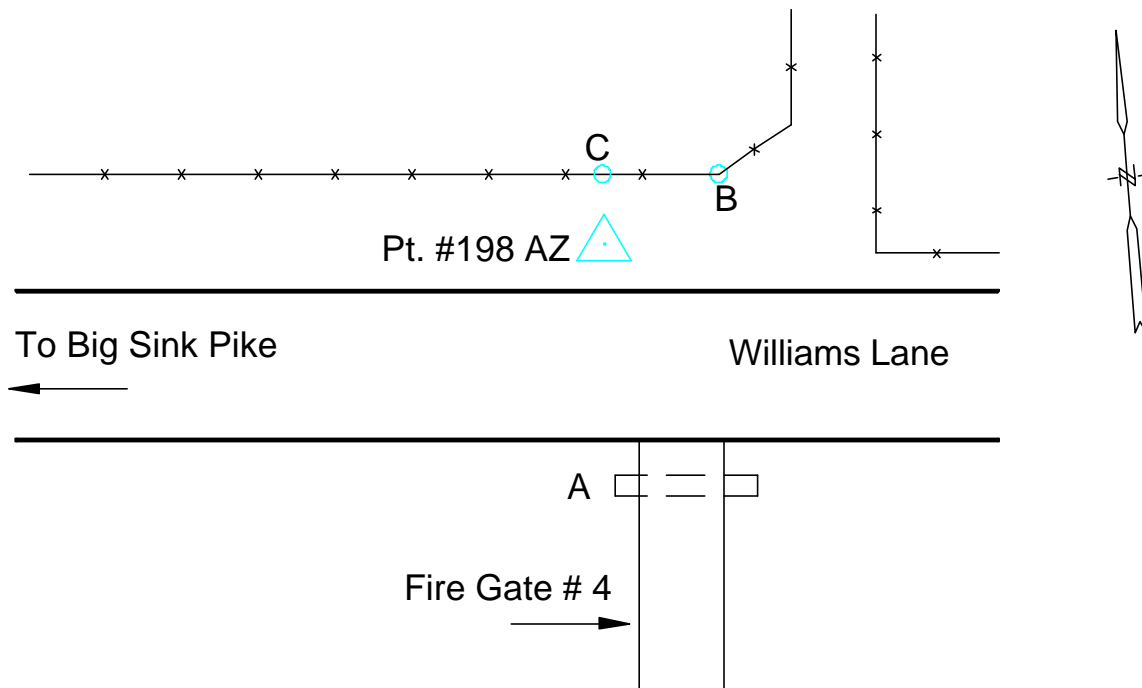




Photo Science, Inc.

# CONTROL REFERENCE SUMMARY

<b>Project Name:</b> Woodford County GIS		<b>Agency:</b> VMWC Planning	
<b>Quad Sheet:</b> Versailles	<b>County:</b> Woodford	<b>State:</b> KY	<b>Date Set:</b> 10/1/2004
<b>Station:</b> 199	<b>Type of Mark:</b> Concrete Monument	<b>Stamping on Mark:</b> 199	<b>Established By:</b> Photo Science, Inc.
<b>Elev (USFeet)</b> 899.68	<b>Elev (M):</b> 274.223	<b>Datum:</b> NAVD88	
<b>Northing (USFeet)</b> 211,902.30	<b>Easting (USFeet)</b> 1,525,766.39	<b>Datum:</b> KY North	
<b>Northing (M)</b> 64,587.950	<b>Easting (M)</b> 465,054.526	<b>Datum:</b> KY North	
<b>Latitude:</b> 38°04'52.36035"N	<b>Longitude:</b> 84°38'53.92370"W	<b>Datum:</b> NAD83	
<b>Ahead Station:</b>	<b>Ahead Azimuth:</b> °   '   "	<b>Ahead Distance:</b>	
<b>Back Station:</b> 199 AZ	<b>Back Azimuth:</b> 03 ° 47 ' 03 "	<b>Back Distance:</b> 880.91	
<b>Data Entry:</b> GB	<b>Checked By:</b> MEM	<b>Date:</b> 11/30/2004	

- A: 57.5' TO A TELEPHONE BOX
- B: 33.3' TO A 26" HACKBERRY TREE
- C: 2.0' TO A CARSONITE POST @ FENCE

## Point #199

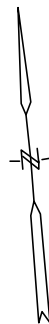
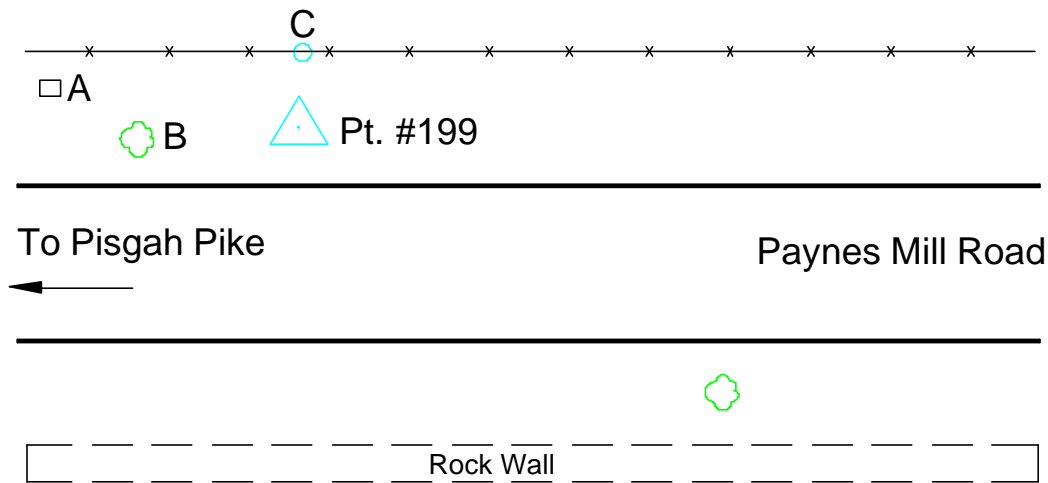




Photo Science, Inc.

# CONTROL REFERENCE SUMMARY

<b>Project Name:</b> Woodford County GIS		<b>Agency:</b> VMWC Planning	
<b>Quad Sheet:</b> Versailles	<b>County:</b> Woodford	<b>State:</b> KY	<b>Date Set:</b> 10/1/2004
<b>Station:</b> 199 AZ	<b>Type of Mark:</b> Concrete Monument	<b>Stamping on Mark:</b> 199 AZ	<b>Established By:</b> Photo Science, Inc.
<b>Elev (USFeet)</b> 834.63	<b>Elev (M):</b> 254.396	<b>Datum:</b> NAVD88	
<b>Northing (USFeet)</b> 212,781.29	<b>Easting (USFeet)</b> 1,525,824.53	<b>Datum:</b> KY North	
<b>Northing (M)</b> 64,855.867	<b>Easting (M)</b> 465,072.247	<b>Datum:</b> KY North	
<b>Latitude:</b> 38°05'01.05219"N	<b>Longitude:</b> 84°38'53.24406"W	<b>Datum:</b> NAD83	
<b>Ahead Station:</b> 199	<b>Ahead Azimuth:</b> 183 ° 47' 03 "	<b>Ahead Distance:</b> 880.91	
<b>Back Station:</b>	<b>Back Azimuth:</b> ° ' "	<b>Back Distance:</b>	
<b>Data Entry:</b> GB	<b>Checked By:</b> MEM	<b>Date:</b> 11/30/2004	

- A: 8.02' TO CORNER OF STONE ABUTMENT
- B: 74.6' TO CORNER OF STONE ABUTMENT
- C: 9.0' TO A CARSONITE POST @ FENCE

## Point #199 AZ

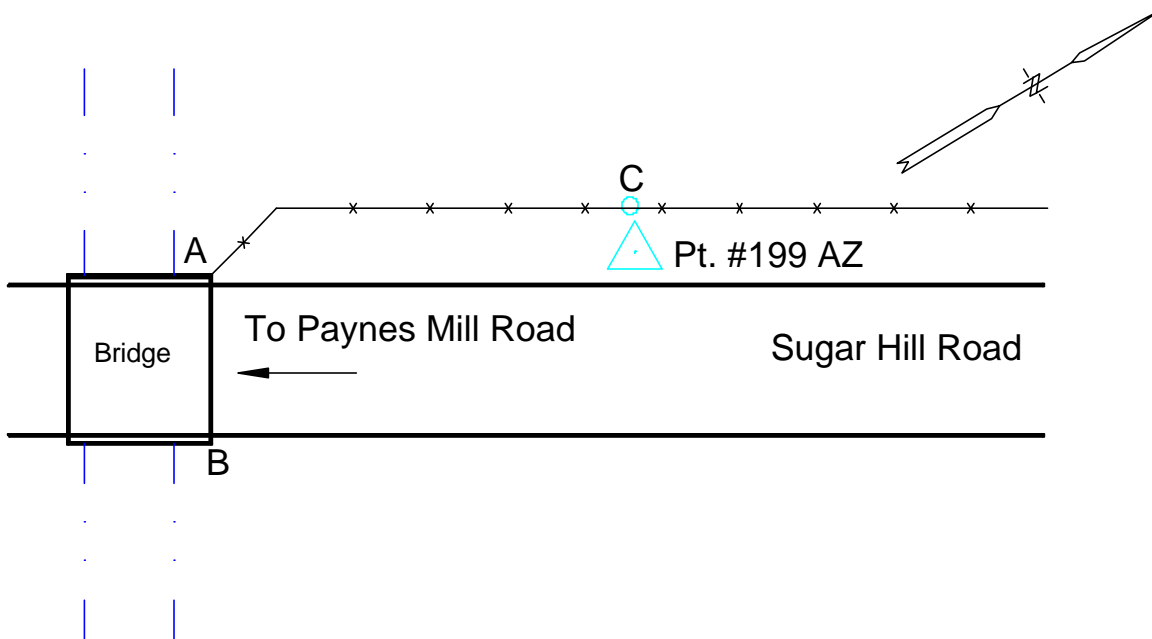






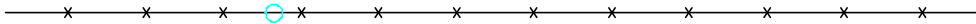
Photo Science, Inc.

# CONTROL REFERENCE SUMMARY

<b>Project Name:</b> Woodford County GIS		<b>Agency:</b> VMWC Planning	
<b>Quad Sheet:</b> Versailles	<b>County:</b> Woodford	<b>State:</b> KY	<b>Date Set:</b> 10/1/2004
<b>Station:</b> 200	<b>Type of Mark:</b> Concrete Monument	<b>Stamping on Mark:</b> 200	<b>Established By:</b> Photo Science, Inc.
<b>Elev (USFeet)</b> 935.72	<b>Elev (M):</b> 285.208	<b>Datum:</b> NAVD88	
<b>Northing (USFeet)</b> 201,125.56	<b>Easting (USFeet)</b> 1,524,210.40	<b>Datum:</b> KY North	
<b>Northing (M)</b> 61,303.193	<b>Easting (M)</b> 464,580.259	<b>Datum:</b> KY North	
<b>Latitude:</b> 38°03'05.75810"N	<b>Longitude:</b> 84°39'12.79358"W	<b>Datum:</b> NAD83	
<b>Ahead Station:</b>	<b>Ahead Azimuth:</b> °   '   "	<b>Ahead Distance:</b>	
<b>Back Station:</b> 200 AZ	<b>Back Azimuth:</b> 192 ° 53 ' 13 "	<b>Back Distance:</b> 754.35	
<b>Data Entry:</b> GB	<b>Checked By:</b> MEM	<b>Date:</b> 11/30/2004	

- A: 28.9' TO A 28" WILD CHERRY TREE
- B: 42.7' TO A UTILITY POLE
- C: 55.8' TO MILE MARKER NUMBER 5

## Point #200



To US 60



Pisgah Pike

□ C





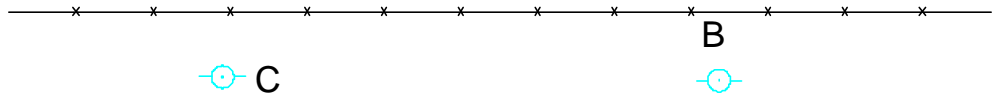
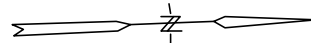
Photo Science, Inc.

# CONTROL REFERENCE SUMMARY

<b>Project Name:</b> Woodford County GIS		<b>Agency:</b> VMWC Planning	
<b>Quad Sheet:</b> Versailles	<b>County:</b> Woodford	<b>State:</b> KY	<b>Date Set:</b> 10/1/2004
<b>Station:</b> 200 AZ	<b>Type of Mark:</b> Concrete Monument	<b>Stamping on Mark:</b> 200 AZ	<b>Established By:</b> Photo Science, Inc.
<b>Elev (USFeet)</b> 960.48	<b>Elev (M):</b> 292.755	<b>Datum:</b> NAVD88	
<b>Northing (USFeet)</b> 200,390.21	<b>Easting (USFeet)</b> 1,524,042.16	<b>Datum:</b> KY North	
<b>Northing (M)</b> 61,079.058	<b>Easting (M)</b> 464,528.979	<b>Datum:</b> KY North	
<b>Latitude:</b> 38°02'58.48139"N	<b>Longitude:</b> 84°39'14.85652"W	<b>Datum:</b> NAD83	
<b>Ahead Station:</b> 200	<b>Ahead Azimuth:</b> 12 ° 53' 13 "	<b>Ahead Distance:</b> 754.35	
<b>Back Station:</b>	<b>Back Azimuth:</b> ° ' "	<b>Back Distance:</b>	
<b>Data Entry:</b> GB	<b>Checked By:</b> MEM	<b>Date:</b> 11/30/2004	

- A: 14.8' TO A POWER POLE
- B: 30.4' TO A POWER POLE
- C: 73.7' TO A POWER POLE

## Point #200 AZ



To US 60



Pisgah Pike

To Woodford  
Co. →  
Board of  
Education

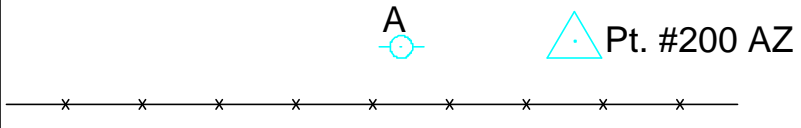




Photo Science, Inc.

# CONTROL REFERENCE SUMMARY

<b>Project Name:</b> Woodford County GIS		<b>Agency:</b> VMWC Planning	
<b>Quad Sheet:</b> Keene	<b>County:</b> Woodford	<b>State:</b> KY	<b>Date Set:</b> 10/1/2004
<b>Station:</b> 201	<b>Type of Mark:</b> Concrete Monument	<b>Stamping on Mark:</b> 201	<b>Established By:</b> Photo Science, Inc.
<b>Elev (USFeet)</b> 879.18	<b>Elev (M):</b> 267.975	<b>Datum:</b> NAVD88	
<b>Northing (USFeet)</b> 172,932.83	<b>Easting (USFeet)</b> 1,499,117.41	<b>Datum:</b> KY North	
<b>Northing (M)</b> 52,710.032	<b>Easting (M)</b> 456,931.900	<b>Datum:</b> KY North	
<b>Latitude:</b> 37°58'25.85067"N	<b>Longitude:</b> 84°44'24.62131"W	<b>Datum:</b> NAD83	
<b>Ahead Station:</b>	<b>Ahead Azimuth:</b> °   '   "	<b>Ahead Distance:</b>	
<b>Back Station:</b> 201 AZ	<b>Back Azimuth:</b> 91 ° 22 ' 56 "	<b>Back Distance:</b> 656.62	
<b>Data Entry:</b> GB	<b>Checked By:</b> MEM	<b>Date:</b> 11/30/2004	

- A: 5.0' TO FENCE
- B: 16.0' TO CENTER OF DELANEY FERRY ROAD
- C: 52.2' TO A TELEPHONE POLE

## Point #201

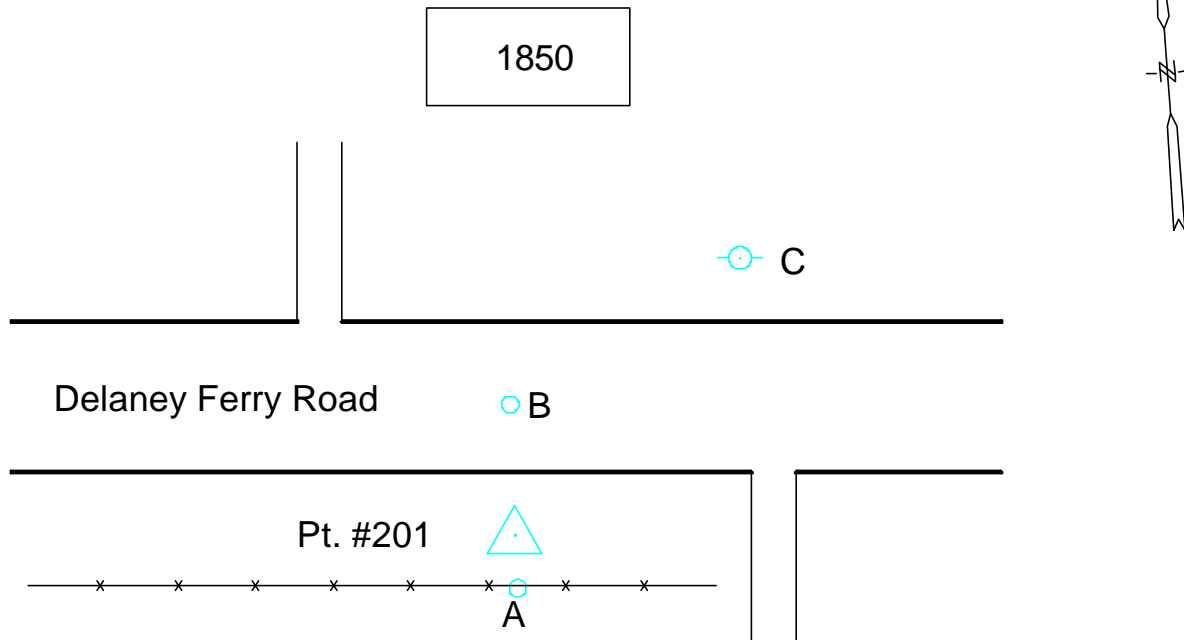




Photo Science, Inc.

# CONTROL REFERENCE SUMMARY

<b>Project Name:</b> Woodford County GIS		<b>Agency:</b> VMWC Planning	
<b>Quad Sheet:</b> Keene	<b>County:</b> Woodford	<b>State:</b> KY	<b>Date Set:</b> 10/1/2004
<b>Station:</b> 201 AZ	<b>Type of Mark:</b> Concrete Monument	<b>Stamping on Mark:</b> 201 AZ	<b>Established By:</b> Photo Science, Inc.
<b>Elev (USFeet)</b> 838.50	<b>Elev (M):</b> 255.575	<b>Datum:</b> NAVD88	
<b>Northing (USFeet)</b> 172,916.99	<b>Easting (USFeet)</b> 1,499,773.84	<b>Datum:</b> KY North	
<b>Northing (M)</b> 52,705.204	<b>Easting (M)</b> 457,131.981	<b>Datum:</b> KY North	
<b>Latitude:</b> 37°58'25.72852"N	<b>Longitude:</b> 84°44'16.42251"W	<b>Datum:</b> NAD83	
<b>Ahead Station:</b> 201	<b>Ahead Azimuth:</b> 271 ° 22' 56 "	<b>Ahead Distance:</b> 656.62	
<b>Back Station:</b>	<b>Back Azimuth:</b> ° ' "	<b>Back Distance:</b>	
<b>Data Entry:</b> GB	<b>Checked By:</b> MEM	<b>Date:</b> 11/30/2004	

- A: 17.8' TO CENTER OF DELANEY FERRY ROAD
- B: 47.3' TO TELEPHONE POLE # 209
- C: 5.3' TO FENCE

## Point #201 AZ

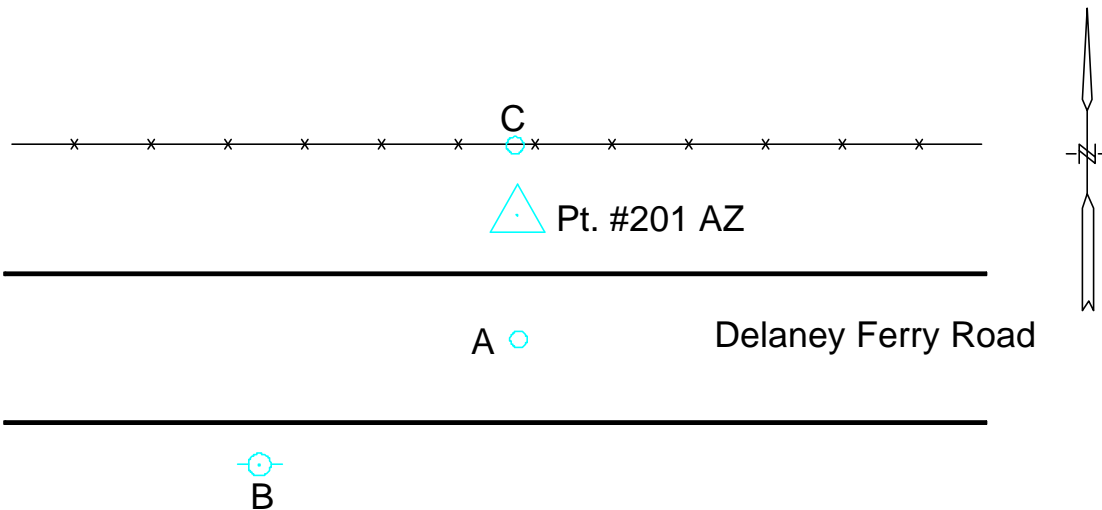




Photo Science, Inc.

# CONTROL REFERENCE SUMMARY

<b>Project Name:</b> Woodford County GIS		<b>Agency:</b> VMWC Planning	
<b>Quad Sheet:</b> Tyrone	<b>County:</b> Woodford	<b>State:</b> KY	<b>Date Set:</b> 10/1/2004
<b>Station:</b> 202	<b>Type of Mark:</b> Concrete Monument	<b>Stamping on Mark:</b> 202	<b>Established By:</b> Photo Science, Inc.
<b>Elev (USFeet)</b> 817.53	<b>Elev (M):</b> 249.184	<b>Datum:</b> NAVD88	
<b>Northing (USFeet)</b> 226,984.14	<b>Easting (USFeet)</b> 1,469,084.10	<b>Datum:</b> KY North	
<b>Northing (M)</b> 69,184.904	<b>Easting (M)</b> 447,777.729	<b>Datum:</b> KY North	
<b>Latitude:</b> 38°07'18.43014"N	<b>Longitude:</b> 84°50'44.04864"W	<b>Datum:</b> NAD83	
<b>Ahead Station:</b>	<b>Ahead Azimuth:</b> °   '   "	<b>Ahead Distance:</b>	
<b>Back Station:</b> 202 AZ	<b>Back Azimuth:</b> 175 ° 58 ' 18 "	<b>Back Distance:</b> 785.89	
<b>Data Entry:</b> GB	<b>Checked By:</b> MEM	<b>Date:</b> 11/30/2004	

- A: 2.1' TO A CARSONITE POST @ FENCE
- B: 14.3' TO CENTER OF GERMANY ROAD
- C: 20.4' TO FENCE POST @ BREAK

## Point #202

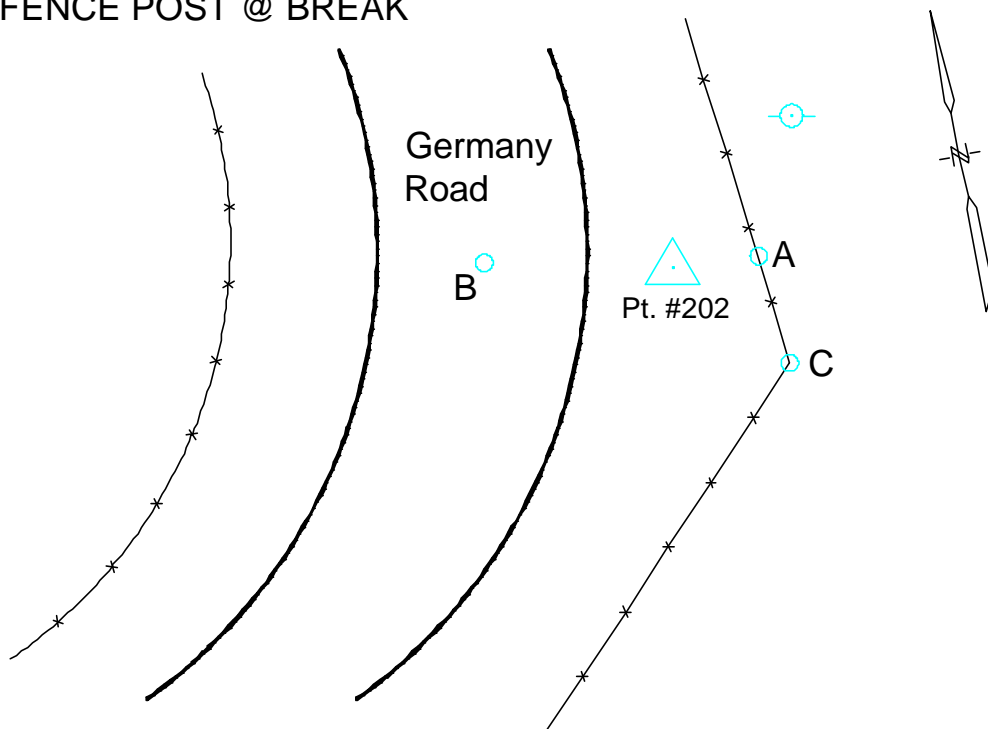




Photo Science, Inc.

# CONTROL REFERENCE SUMMARY

<b>Project Name:</b> Woodford County GIS		<b>Agency:</b> VMWC Planning	
<b>Quad Sheet:</b> Tyrone	<b>County:</b> Woodford	<b>State:</b> KY	<b>Date Set:</b> 10/1/2004
<b>Station:</b> 202 AZ	<b>Type of Mark:</b> Concrete Monument	<b>Stamping on Mark:</b> 202 AZ	<b>Established By:</b> Photo Science, Inc.
<b>Elev (USFeet)</b> 795.14	<b>Elev (M):</b> 242.359	<b>Datum:</b> NAVD88	
<b>Northing (USFeet)</b> 226,200.19	<b>Easting (USFeet)</b> 1,469,139.31	<b>Datum:</b> KY North	
<b>Northing (M)</b> 68,945.956	<b>Easting (M)</b> 447,794.557	<b>Datum:</b> KY North	
<b>Latitude:</b> 38°07'10.68396"N	<b>Longitude:</b> 84°50'43.29436"W	<b>Datum:</b> NAD83	
<b>Ahead Station:</b> 202	<b>Ahead Azimuth:</b> 355 ° 58' 18 "	<b>Ahead Distance:</b> 785.89	
<b>Back Station:</b>	<b>Back Azimuth:</b> ° ' "	<b>Back Distance:</b>	
<b>Data Entry:</b> GB	<b>Checked By:</b> MEM	<b>Date:</b> 11/30/2004	

- A: 5.6' TO A CARSONITE POST @ FENCE
- B: 11.9' TO CENTER OF GERMANY ROAD
- C: 65.7' TO FENCE CORNER

## Point #202 AZ

