



Photo Science, Inc.

CONTROL REFERENCE SUMMARY

Project Name: Woodford County GIS		Agency: VMWC Planning	
Quad Sheet: Midway	County: Woodford	State: KY	Date Set: 10/1/2004
Station: 186	Type of Mark: Concrete Monument	Stamping on Mark: 186	Established By: Photo Science, Inc.
Elev (USFeet) 899.17	Elev (M): 274.068	Datum: NAVD88	
Northing (USFeet) 230,099.18	Easting (USFeet) 1,504,692.42	Datum: KY North	
Northing (M) 70,134.370	Easting (M) 458,631.167	Datum: KY North	
Latitude: 38°07'51.26383"N	Longitude: 84°43'18.65620"W	Datum: NAD83	
Ahead Station:	Ahead Azimuth: ° ' "	Ahead Distance:	
Back Station: 186 AZ	Back Azimuth: 297 ° 31 ' 43 "	Back Distance: 617.02	
Data Entry: GB	Checked By: MEM	Date: 11/30/2004	

- A: 9.4' TO PLANK FENCE
- B: 12.1' TO CENTER OF HWY 1681
- C: 28.0' TO A 5" WILD CHERRY TREE

Point #186

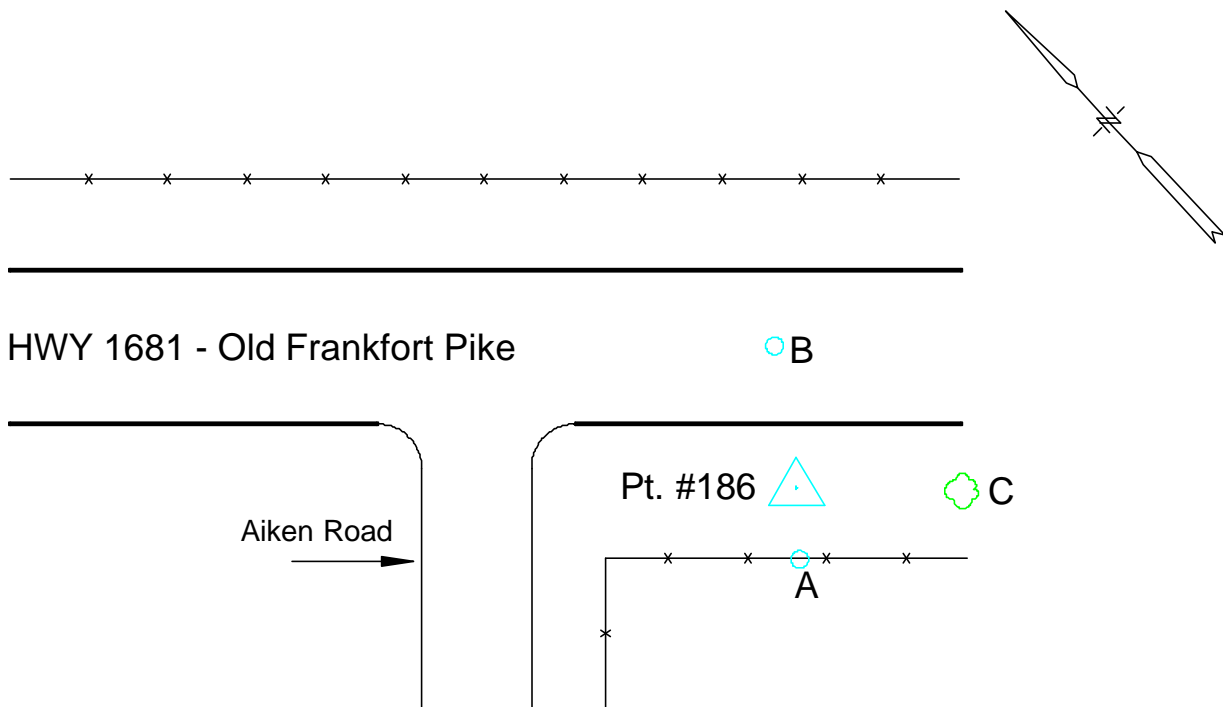




Photo Science, Inc.

CONTROL REFERENCE SUMMARY

Project Name: Woodford County GIS		Agency: VMWC Planning	
Quad Sheet: Midway	County: Woodford	State: KY	Date Set: 10/1/2004
Station: 186 AZ	Type of Mark: Concrete Monument	Stamping on Mark: 186 AZ	Established By: Photo Science, Inc.
Elev (USFeet) 897.43	Elev (M): 273.537	Datum: NAVD88	
Northing (USFeet) 230,384.36	Easting (USFeet) 1,504,145.26	Datum: KY North	
Northing (M) 70,221.293	Easting (M) 458,464.392	Datum: KY North	
Latitude: 38°07'54.05528"N	Longitude: 84°43'25.52232"W	Datum: NAD83	
Ahead Station: 186	Ahead Azimuth: 117 ° 31' 43 "	Ahead Distance: 617.02	
Back Station:	Back Azimuth: ° ' "	Back Distance:	
Data Entry: GB	Checked By: MEM	Date: 11/30/2004	

- A: 2.6' TO WIRE FENCE
- B: 13.4' TO CENTER OF HWY 1681
- C: 64.4' TO CENTER OF DRIVE & CATTLEGUARD

Point #186 AZ

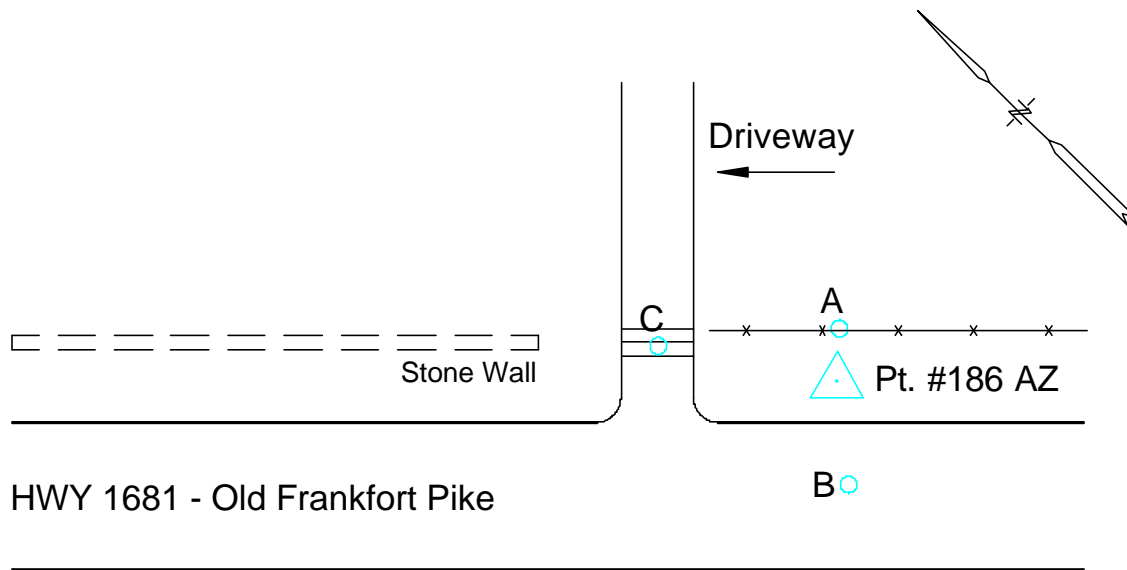




Photo Science, Inc.

CONTROL REFERENCE SUMMARY

Project Name: Woodford County GIS		Agency: VMWC Planning	
Quad Sheet: Midway	County: Woodford	State: KY	Date Set: 10/1/2004
Station: 187	Type of Mark: Concrete Monument	Stamping on Mark: 187	Established By: Photo Science, Inc.
Elev (USFeet) 777.49	Elev (M): 236.979	Datum: NAVD88	
Northing (USFeet) 242,345.69	Easting (USFeet) 1,498,770.61	Datum: KY North	
Northing (M) 73,867.114	Easting (M) 456,826.196	Datum: KY North	
Latitude: 38°09'52.02118"N	Longitude: 84°44'33.58903"W	Datum: NAD83	
Ahead Station:	Ahead Azimuth: ° ' "	Ahead Distance:	
Back Station: 187 AZ	Back Azimuth: 08 ° 53 ' 48 "	Back Distance: 965.20	
Data Entry: GB	Checked By: MEM	Date: 11/30/2004	

- A: 9.4' TO SE GRATE OF CATCH BASIN
- B: 45.5' TO CORNER OF R/W FENCE
- C: 53.0' TO NW CORNER OF BRIDGE PIER

Point #187

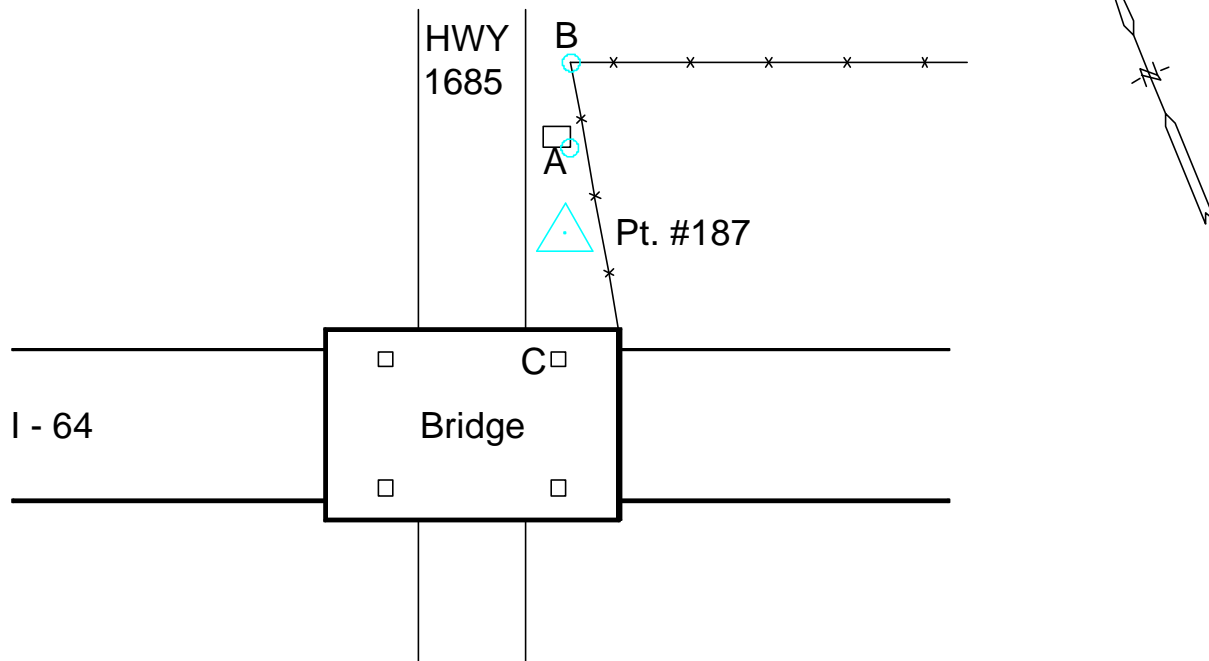




Photo Science, Inc.

CONTROL REFERENCE SUMMARY

Project Name: Woodford County GIS		Agency: VMWC Planning	
Quad Sheet: Midway	County: Woodford	State: KY	Date Set: 10/1/2004
Station: 187 AZ	Type of Mark: Concrete Monument	Stamping on Mark: 187 AZ	Established By: Photo Science, Inc.
Elev (USFeet) 775.02	Elev (M): 236.227	Datum: NAVD88	
Northing (USFeet) 243,299.28	Easting (USFeet) 1,498,919.88	Datum: KY North	
Northing (M) 74,157.769	Easting (M) 456,871.693	Datum: KY North	
Latitude: 38°10'01.45576"N	Longitude: 84°44'31.78379"W	Datum: NAD83	
Ahead Station: 187	Ahead Azimuth: 188 ° 53' 48 "	Ahead Distance: 965.2	
Back Station:	Back Azimuth: ° ' "	Back Distance:	
Data Entry: GB	Checked By: MEM	Date: 11/30/2004	

Point #187 AZ

Point 187 AZ is NGS Benchmark I-64 L-50.

DESIGNATION - I64 L 50
 PID - HZ0464
 STATE/COUNTY- KY/WOODFORD
 USGS QUAD - MIDWAY (1984)

STATION DESCRIPTION

DESCRIBED BY PARK AERIAL SURVEYS INCORPORATED 1960
 3.5 MI NW FROM MIDWAY.
 ABOUT 0.8 MILE NORTH ALONG U.S. HIGHWAY 62 FROM THE POST OFFICE
 IN MIDWAY, THENCE ABOUT 3.3 MILES WEST ALONG U.S. HIGHWAY 421,
 THENCE ABOUT 0.4 MILE SOUTH ALONG WOODLAKE ROAD, ABOUT 0.9
 MILE NORTH OF SPRING STATION, 36 FEET NORTH-NORTHWEST OF DRIVEWAY
 INTERSECTION, 11 FEET WEST OF APPROXIMATE CENTER OF WOODLAKE
 ROAD, 1 FOOT EAST OF NORTH END OF STONE FENCE. A KENTUCKY
 DEPARTMENT OF HIGHWAYS BENCH MARK DISK SET IN TOP OF A CONCRETE
 CYLINDER PROJECTRING 3 INCHES AND STAMPED I64 L50 1960. BENCH
 MARK IS 2.2 FEET SOUTHEAST OF METAL WITNESS POST AND SIGN.



Photo Science, Inc.

CONTROL REFERENCE SUMMARY

Project Name: Woodford County GIS		Agency: VMWC Planning	
Quad Sheet: Frankfort East	County: Woodford	State: KY	Date Set: 10/1/2004
Station: 188	Type of Mark: Concrete Monument	Stamping on Mark: 188	Established By: Photo Science, Inc.
Elev (USFeet) 838.64	Elev (M): 255.618	Datum: NAVD88	
Northing (USFeet) 246,817.65	Easting (USFeet) 1,493,759.33	Datum: KY North	
Northing (M) 75,230.170	Easting (M) 455,298.754	Datum: KY North	
Latitude: 38°10'35.95920"N	Longitude: 84°45'36.64554"W	Datum: NAD83	
Ahead Station:	Ahead Azimuth: ° ' "	Ahead Distance:	
Back Station: 188 AZ	Back Azimuth: 284 ° 05 ' 15 "	Back Distance: 1,051.92	
Data Entry: GB	Checked By: MEM	Date: 11/30/2004	

- A: 4.6' TO PLANK FENCE
- B: 65.3' TO FENCE POST @ BEGINNING OF RADIUS
- C: 52.7' TO CENTER OF US 421

Point #188

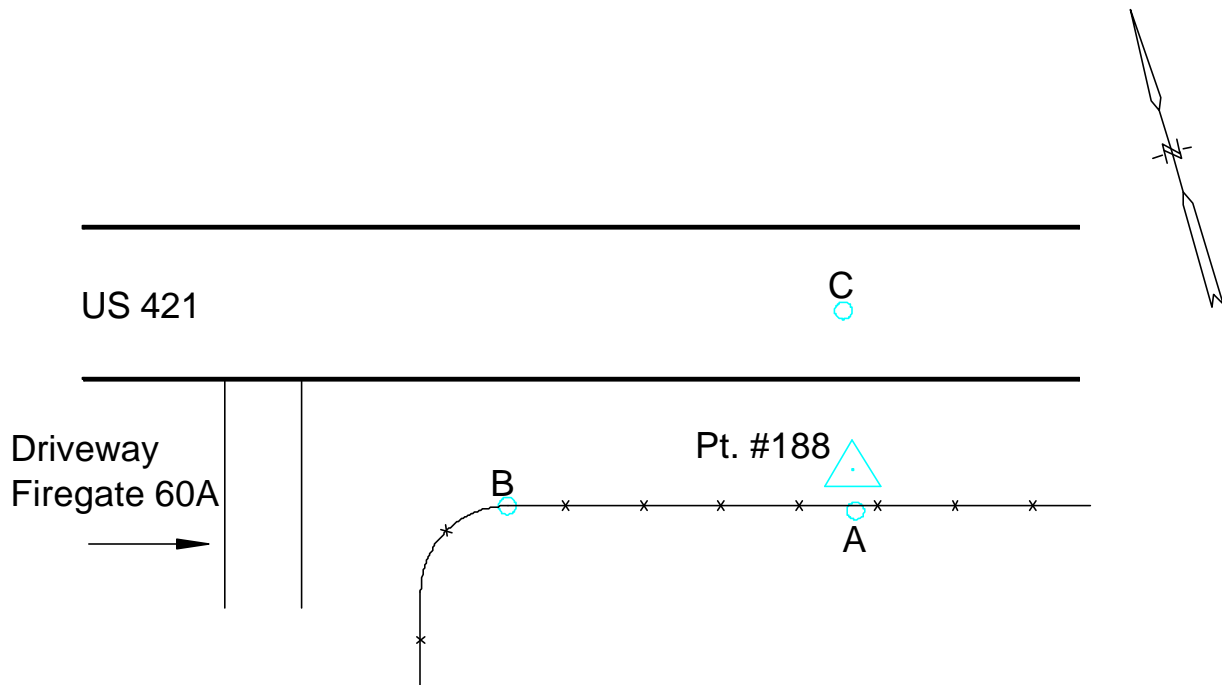




Photo Science, Inc.

CONTROL REFERENCE SUMMARY

Project Name: Woodford County GIS		Agency: VMWC Planning	
Quad Sheet: Frankfort East	County: Woodford	State: KY	Date Set: 10/1/2004
Station: 188 AZ	Type of Mark: Concrete Monument	Stamping on Mark: 188 AZ	Established By: Photo Science, Inc.
Elev (USFeet) 846.70	Elev (M): 258.075	Datum: NAVD88	
Northing (USFeet) 247,073.69	Easting (USFeet) 1,492,739.05	Datum: KY North	
Northing (M) 75,308.211	Easting (M) 454,987.772	Datum: KY North	
Latitude: 38°10'38.43420"N	Longitude: 84°45'49.44048"W	Datum: NAD83	
Ahead Station: 188	Ahead Azimuth: 104 ° 05' 15 "	Ahead Distance: 1051.92	
Back Station:	Back Azimuth: ° ' "	Back Distance:	
Data Entry: GB	Checked By: MEM	Date: 11/30/2004	

- A: 1.0' TO A CARSONITE POST
- B: 106.0' TO CENTER OF DRIVEWAY
- C: 48.2' TO MAILBOX @ 4713

Point #188 AZ

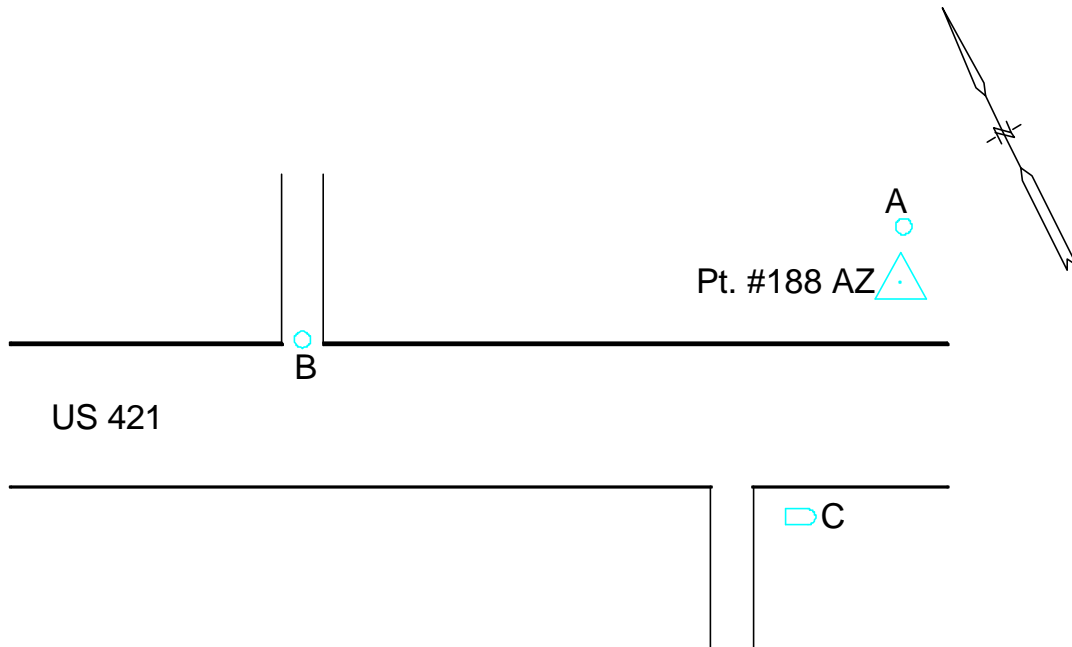




Photo Science, Inc.

CONTROL REFERENCE SUMMARY

Project Name: Woodford County GIS		Agency: VMWC Planning	
Quad Sheet: Wilmore	County: Woodford	State: KY	Date Set: 10/1/2004
Station: 189	Type of Mark: Concrete Monument	Stamping on Mark: 189	Established By: Photo Science, Inc.
Elev (USFeet) 784.27	Elev (M): 239.046	Datum: NAVD88	
Northing (USFeet) 133,660.53	Easting (USFeet) 1,499,728.96	Datum: KY North	
Northing (M) 40,739.811	Easting (M) 457,118.301	Datum: KY North	
Latitude: 37°51'57.65008"N	Longitude: 84°44'14.38915"W	Datum: NAD83	
Ahead Station:	Ahead Azimuth: ° ' "	Ahead Distance:	
Back Station: 189 AZ	Back Azimuth: 49 ° 27 ' 40 "	Back Distance: 752.61	
Data Entry: GB	Checked By: MEM	Date: 11/30/2004	

A: 7.1' TO CARSONITE POST @ FENCE
 B: 11.4' TO CENTER OF MUNDYS LANDING ROAD
 C: 70.4' TO FIREGATE POST & SIGN #22

Point #189

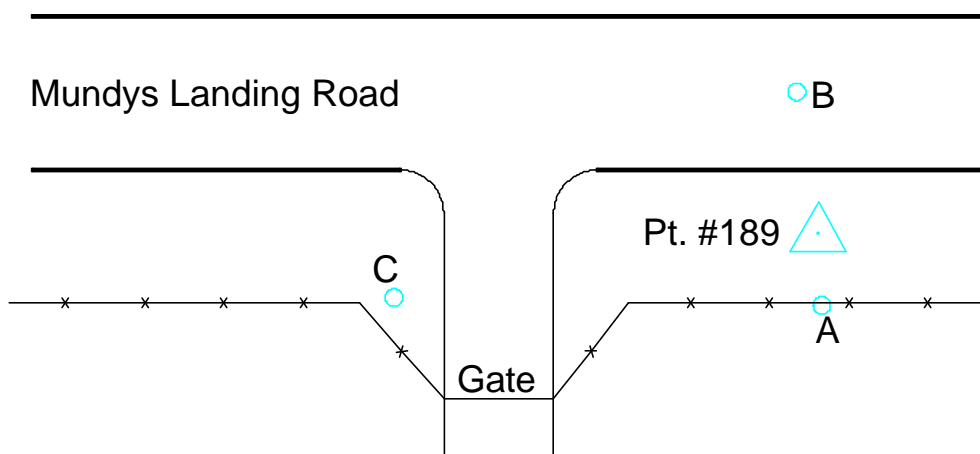
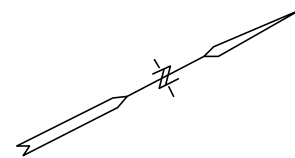




Photo Science, Inc.

CONTROL REFERENCE SUMMARY

Project Name: Woodford County GIS		Agency: VMWC Planning	
Quad Sheet: Wilmore	County: Woodford	State: KY	Date Set: 10/1/2004
Station: 189 AZ	Type of Mark: Concrete Monument	Stamping on Mark: 189 AZ	Established By: Photo Science, Inc.
Elev (USFeet) 789.81	Elev (M): 240.735	Datum: NAVD88	
Northing (USFeet) 134,149.70	Easting (USFeet) 1,500,300.92	Datum: KY North	
Northing (M) 40,888.910	Easting (M) 457,292.635	Datum: KY North	
Latitude: 37°52'02.51571"N	Longitude: 84°44'07.28904"W	Datum: NAD83	
Ahead Station: 189	Ahead Azimuth: 229 ° 27' 40 "	Ahead Distance: 752.61	
Back Station:	Back Azimuth: ° ' "	Back Distance:	
Data Entry: GB	Checked By: MEM	Date: 11/30/2004	

- A: 2.9' TO A CARSONITE POST @ FENCE
- B: 14.1' TO CENTER OF MUNDYS LANDING ROAD
- C: 57.0' TO A 10" DOGWOOD TREE

Point #189 AZ

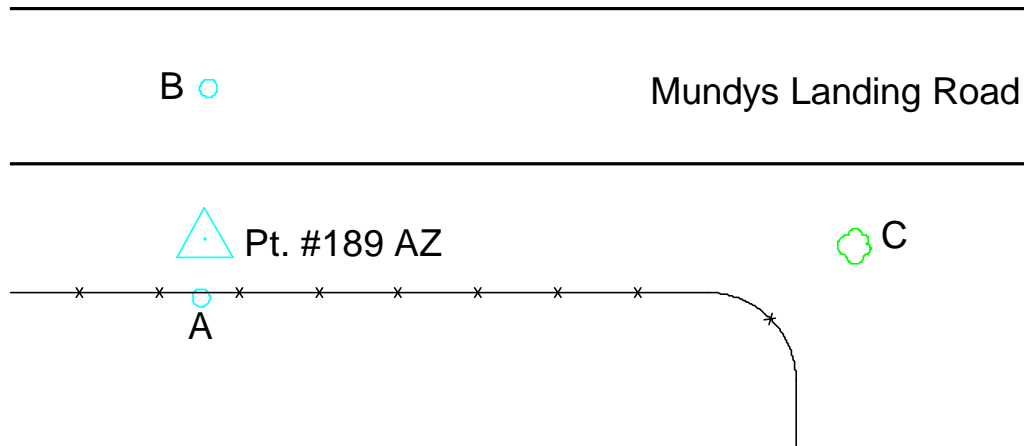
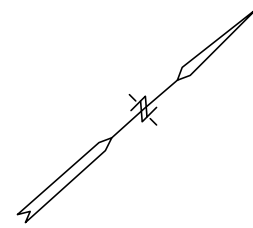




Photo Science, Inc.

CONTROL REFERENCE SUMMARY

Project Name: Woodford County GIS		Agency: VMWC Planning	
Quad Sheet: Midway	County: Woodford	State: KY	Date Set: 10/1/2004
Station: 190	Type of Mark: Concrete Monument	Stamping on Mark: 190	Established By: Photo Science, Inc.
Elev (USFeet) 818.83	Elev (M): 249.580	Datum: NAVD88	
Northing (USFeet) 247,729.34	Easting (USFeet) 1,499,810.70	Datum: KY North	
Northing (M) 75,508.054	Easting (M) 457,143.216	Datum: KY North	
Latitude: 38°10'45.29632"N	Longitude: 84°44'20.92403"W	Datum: NAD83	
Ahead Station:	Ahead Azimuth: ° ' "	Ahead Distance:	
Back Station: 190 AZ	Back Azimuth: 14 ° 47 ' 28 "	Back Distance: 881.69	
Data Entry: GB	Checked By: MEM	Date: 11/30/2004	

- A: 3.8' TO WIRE FENCE
- B: 13.7' TO CENTER OF HWY 1685
- C: 52.5' TO A TWIN 15" HACKBERRY TREE

Point #190

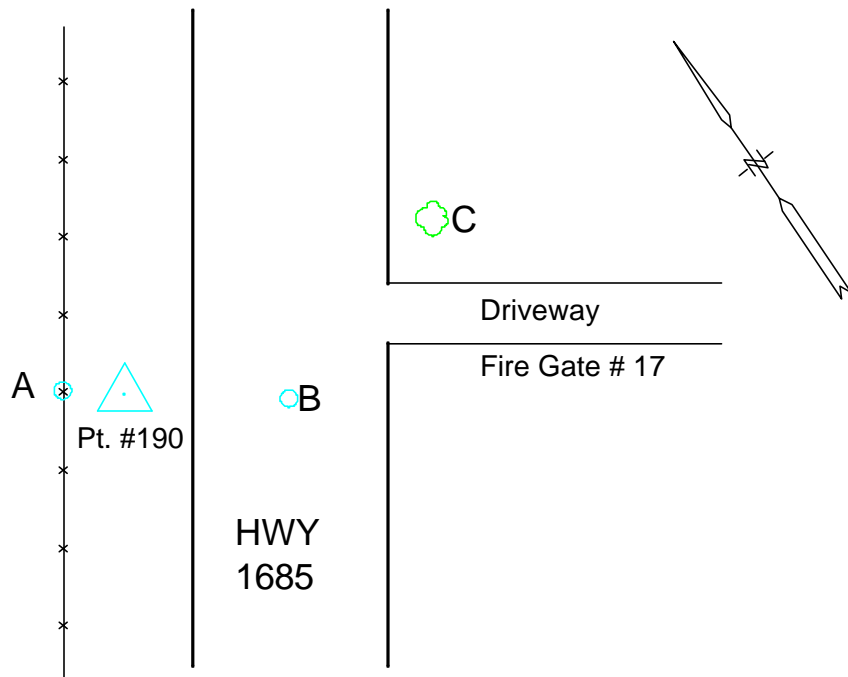




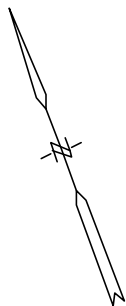
Photo Science, Inc.

CONTROL REFERENCE SUMMARY

Project Name: Woodford County GIS		Agency: VMWC Planning	
Quad Sheet: Midway	County: Woodford	State: KY	Date Set: 10/1/2004
Station: 190 AZ	Type of Mark: Concrete Monument	Stamping on Mark: 190 AZ	Established By: Photo Science, Inc.
Elev (USFeet) 768.43	Elev (M): 234.218	Datum: NAVD88	
Northing (USFeet) 248,581.81	Easting (USFeet) 1,500,035.79	Datum: KY North	
Northing (M) 75,767.887	Easting (M) 457,211.823	Datum: KY North	
Latitude: 38°10'53.73522"N	Longitude: 84°44'18.16170"W	Datum: NAD83	
Ahead Station: 190	Ahead Azimuth: 194 ° 47' 28 "	Ahead Distance: 881.69	
Back Station:	Back Azimuth: ° ' "	Back Distance:	
Data Entry: GB	Checked By: MEM	Date: 11/30/2004	

- A: 6.3' TO WIRE FENCE
- B: 12.5' TO CENTER OF HWY 1685
- C: 62.5' TO A 12" HACKBERRY TREE

Point #190 AZ



B

HWY
1685

C

Pt. #190 AZ

A

