



Photo Science, Inc.

# CONTROL REFERENCE SUMMARY

<b>Project Name:</b> Woodford County GIS		<b>Agency:</b> VMWC Planning	
<b>Quad Sheet:</b> Tyrone	<b>County:</b> Woodford	<b>State:</b> KY	<b>Date Set:</b> 10/1/2004
<b>Station:</b> 181	<b>Type of Mark:</b> Concrete Monument	<b>Stamping on Mark:</b> 181	<b>Established By:</b> Photo Science, Inc.
<b>Elev (USFeet)</b> 845.00	<b>Elev (M):</b> 257.557	<b>Datum:</b> NAVD88	
<b>Northing (USFeet)</b> 212,042.84	<b>Easting (USFeet)</b> 1,491,223.67	<b>Datum:</b> KY North	
<b>Northing (M)</b> 64,630.787	<b>Easting (M)</b> 454,525.884	<b>Datum:</b> KY North	
<b>Latitude:</b> 38°04'52.05049"N	<b>Longitude:</b> 84°46'05.94910"W	<b>Datum:</b> NAD83	
<b>Ahead Station:</b>	<b>Ahead Azimuth:</b> °   '   "	<b>Ahead Distance:</b>	
<b>Back Station:</b> 181 AZ	<b>Back Azimuth:</b> 129 ° 58 ' 26 "	<b>Back Distance:</b> 857.16	
<b>Data Entry:</b> GB	<b>Checked By:</b> MEM	<b>Date:</b> 11/30/2004	

A: 3.7' TO A CARSONITE POST @ FENCE  
 B: 74.4' TO SE POLE OF POWER LINE STRUCTURE  
 C: 52.6' TO THE GATE LATCH POST

## Point #181

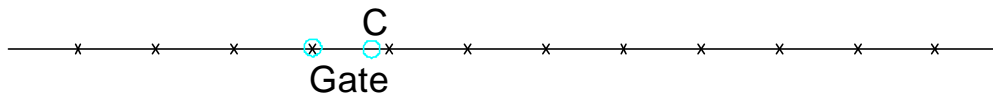
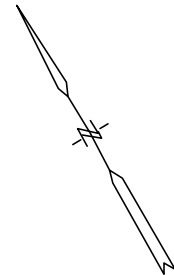
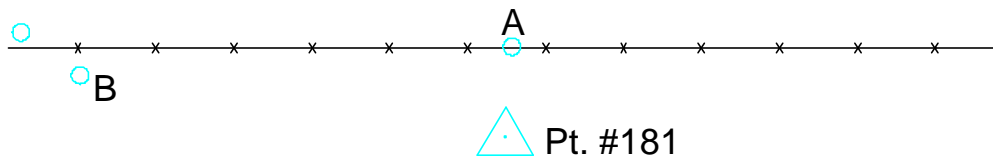




Photo Science, Inc.

# CONTROL REFERENCE SUMMARY

<b>Project Name:</b> Woodford County GIS		<b>Agency:</b> VMWC Planning	
<b>Quad Sheet:</b> Tyrone	<b>County:</b> Woodford	<b>State:</b> KY	<b>Date Set:</b> 10/1/2004
<b>Station:</b> 181 AZ	<b>Type of Mark:</b> Concrete Monument	<b>Stamping on Mark:</b> 181 AZ	<b>Established By:</b> Photo Science, Inc.
<b>Elev (USFeet)</b> 853.92	<b>Elev (M):</b> 260.275	<b>Datum:</b> NAVD88	
<b>Northing (USFeet)</b> 211,492.17	<b>Easting (USFeet)</b> 1,491,880.54	<b>Datum:</b> KY North	
<b>Northing (M)</b> 64,462.942	<b>Easting (M)</b> 454,726.098	<b>Datum:</b> KY North	
<b>Latitude:</b> 38°04'46.64324"N	<b>Longitude:</b> 84°45'57.69524"W	<b>Datum:</b> NAD83	
<b>Ahead Station:</b> 181	<b>Ahead Azimuth:</b> 309 ° 58' 26 "	<b>Ahead Distance:</b> 857.16	
<b>Back Station:</b>	<b>Back Azimuth:</b> ° ' "	<b>Back Distance:</b>	
<b>Data Entry:</b> GB	<b>Checked By:</b> MEM	<b>Date:</b> 11/30/2004	

- A: 4.0' TO A CARSONITE POST @ FENCE
- B: 46.4' TO A 12" HACKBERRY TREE
- C: 70.4' TO A 10" HACKBERRY TREE

## Point #181 AZ

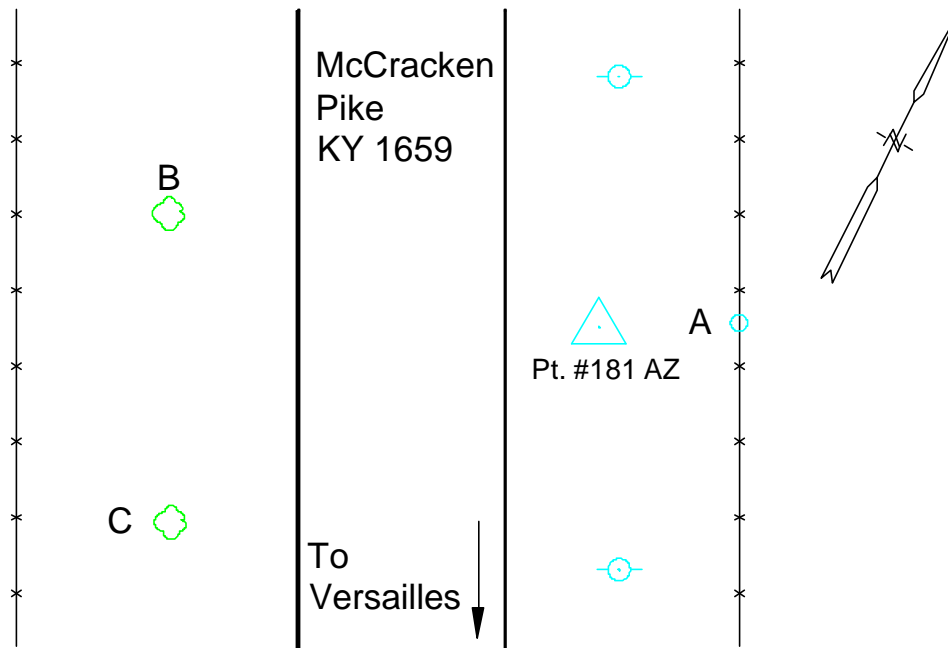




Photo Science, Inc.

# CONTROL REFERENCE SUMMARY

<b>Project Name:</b> Woodford County GIS		<b>Agency:</b> VMWC Planning	
<b>Quad Sheet:</b> Versailles	<b>County:</b> Woodford	<b>State:</b> KY	<b>Date Set:</b> 10/1/2004
<b>Station:</b> 182	<b>Type of Mark:</b> Concrete Monument	<b>Stamping on Mark:</b> 182	<b>Established By:</b> Photo Science, Inc.
<b>Elev (USFeet)</b> 881.70	<b>Elev (M):</b> 268.743	<b>Datum:</b> NAVD88	
<b>Northing (USFeet)</b> 207,728.08	<b>Easting (USFeet)</b> 1,500,040.76	<b>Datum:</b> KY North	
<b>Northing (M)</b> 63,315.645	<b>Easting (M)</b> 457,213.338	<b>Datum:</b> KY North	
<b>Latitude:</b> 38°04'09.87240"N	<b>Longitude:</b> 84°44'15.39074"W	<b>Datum:</b> NAD83	
<b>Ahead Station:</b>	<b>Ahead Azimuth:</b> °   '   "	<b>Ahead Distance:</b>	
<b>Back Station:</b> 182 AZ	<b>Back Azimuth:</b> 30 ° 35 ' 13 "	<b>Back Distance:</b> 956.59	
<b>Data Entry:</b> GB	<b>Checked By:</b> MEM	<b>Date:</b> 11/30/2004	

- A: 29.3' TO A POWER POLE
- B: 109.3' TO NEAR CORNER OF HEADWALL
- C: 51.9' TO NEAR CORNER OF WINGWALL

## Point #182

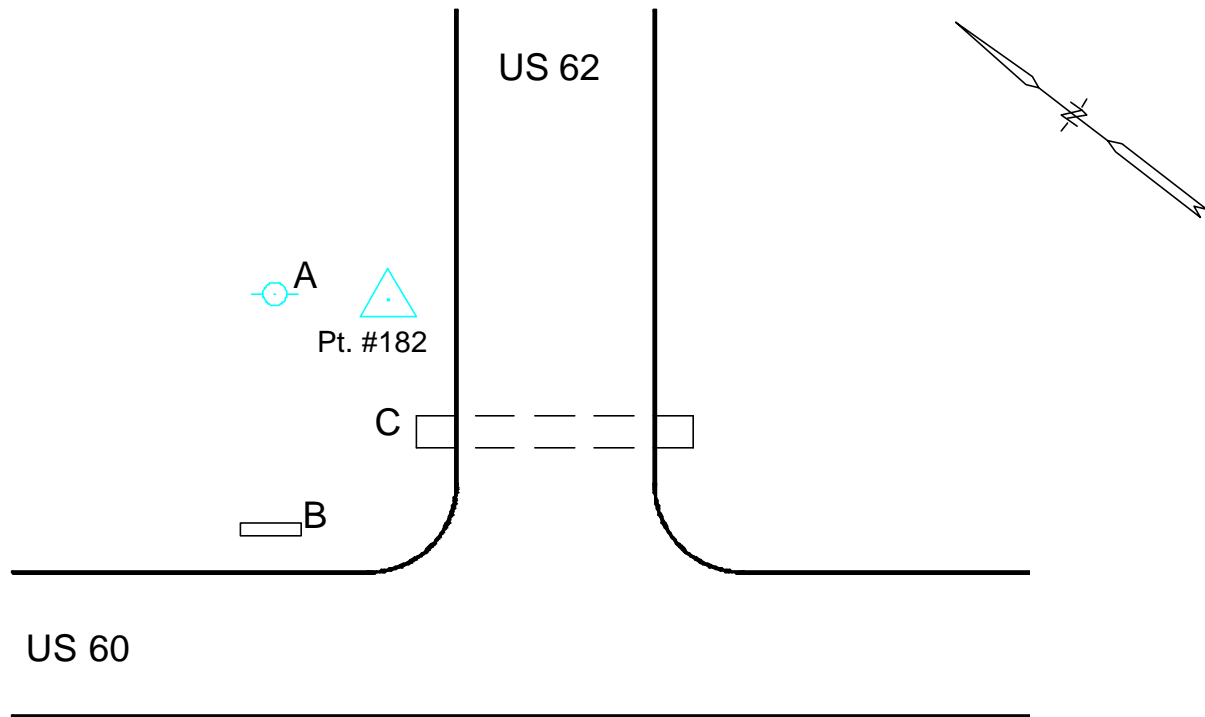




Photo Science, Inc.

# CONTROL REFERENCE SUMMARY

<b>Project Name:</b> Woodford County GIS		<b>Agency:</b> VMWC Planning	
<b>Quad Sheet:</b> Versailles	<b>County:</b> Woodford	<b>State:</b> KY	<b>Date Set:</b> 10/1/2004
<b>Station:</b> 182 AZ	<b>Type of Mark:</b> Concrete Monument	<b>Stamping on Mark:</b> 182 AZ	<b>Established By:</b> Photo Science, Inc.
<b>Elev (USFeet)</b> 898.41	<b>Elev (M):</b> 273.836	<b>Datum:</b> NAVD88	
<b>Northing (USFeet)</b> 208,551.57	<b>Easting (USFeet)</b> 1,500,527.52	<b>Datum:</b> KY North	
<b>Northing (M)</b> 63,566.646	<b>Easting (M)</b> 457,361.703	<b>Datum:</b> KY North	
<b>Latitude:</b> 38°04'18.03855"N	<b>Longitude:</b> 84°44'09.35818"W	<b>Datum:</b> NAD83	
<b>Ahead Station:</b> 182	<b>Ahead Azimuth:</b> 210 ° 35' 13 "	<b>Ahead Distance:</b> 956.59	
<b>Back Station:</b>	<b>Back Azimuth:</b> ° ' "	<b>Back Distance:</b>	
<b>Data Entry:</b> GB	<b>Checked By:</b> MEM	<b>Date:</b> 11/30/2004	

- A: 66.0' TO A WOODEN FENCE CORNER
- B: 34.6' TO A UTILITY POLE
- C: 5.0' TO A CARSONITE POST @ FENCE

## Point #182 AZ

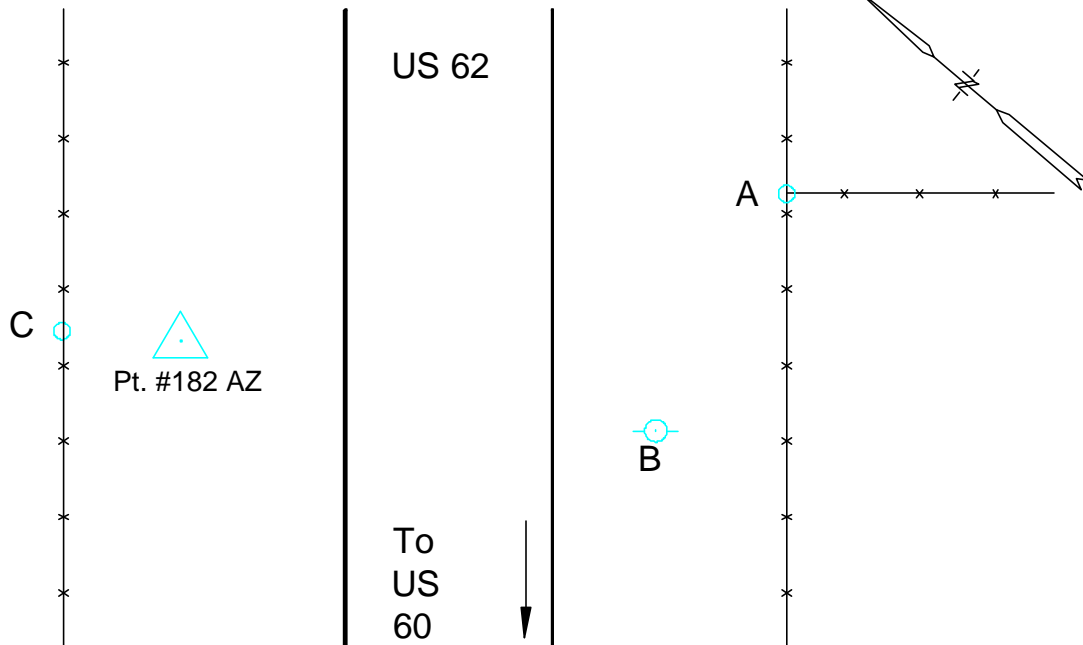




Photo Science, Inc.

# CONTROL REFERENCE SUMMARY

<b>Project Name:</b> Woodford County GIS		<b>Agency:</b> VMWC Planning	
<b>Quad Sheet:</b> Versailles	<b>County:</b> Woodford	<b>State:</b> KY	<b>Date Set:</b> 10/1/2004
<b>Station:</b> 183	<b>Type of Mark:</b> Concrete Monument	<b>Stamping on Mark:</b> 183	<b>Established By:</b> Photo Science, Inc.
<b>Elev (USFeet)</b> 913.06	<b>Elev (M):</b> 278.301	<b>Datum:</b> NAVD88	
<b>Northing (USFeet)</b> 202,361.64	<b>Easting (USFeet)</b> 1,502,612.21	<b>Datum:</b> KY North	
<b>Northing (M)</b> 61,679.951	<b>Easting (M)</b> 457,997.118	<b>Datum:</b> KY North	
<b>Latitude:</b> 38°03'16.95514"N	<b>Longitude:</b> 84°43'42.88675"W	<b>Datum:</b> NAD83	
<b>Ahead Station:</b>	<b>Ahead Azimuth:</b> ° ' "	<b>Ahead Distance:</b>	
<b>Back Station:</b> 183 AZ	<b>Back Azimuth:</b> 182 ° 15 ' 13 "	<b>Back Distance:</b> 601.97	
<b>Data Entry:</b> GB	<b>Checked By:</b> MEM	<b>Date:</b> 11/30/2004	

- A: 31.7' TO A CARSONITE POST @ POWER POLE
- B: 35.2' TO A POWER POLE
- C: 19.7' TO CORNER OF ISLAND CURB

## Point #183

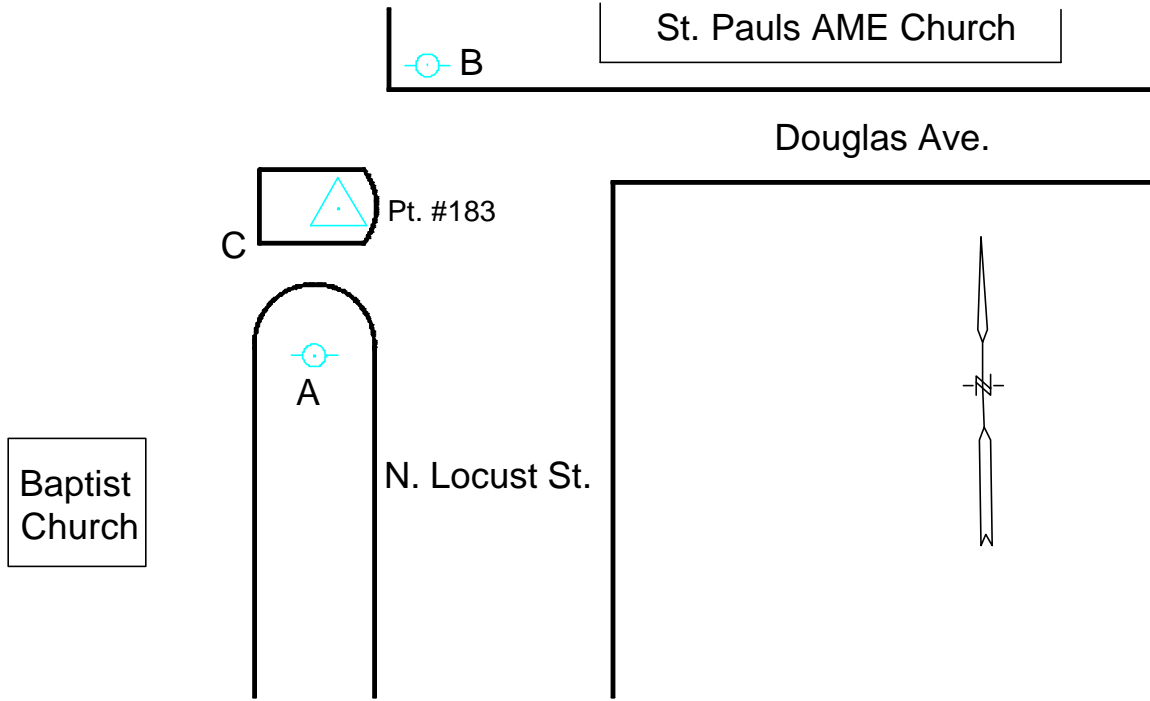




Photo Science, Inc.

# CONTROL REFERENCE SUMMARY

<b>Project Name:</b> Woodford County GIS		<b>Agency:</b> VMWC Planning	
<b>Quad Sheet:</b> Versailles	<b>County:</b> Woodford	<b>State:</b> KY	<b>Date Set:</b> 10/1/2004
<b>Station:</b> 183 AZ	<b>Type of Mark:</b> Concrete Monument	<b>Stamping on Mark:</b> 183 AZ	<b>Established By:</b> Photo Science, Inc.
<b>Elev (USFeet)</b> 894.04	<b>Elev (M):</b> 272.504	<b>Datum:</b> NAVD88	
<b>Northing (USFeet)</b> 201,760.14	<b>Easting (USFeet)</b> 1,502,588.54	<b>Datum:</b> KY North	
<b>Northing (M)</b> 61,496.614	<b>Easting (M)</b> 457,989.903	<b>Datum:</b> KY North	
<b>Latitude:</b> 38°03'11.00768"N	<b>Longitude:</b> 84°43'43.14362"W	<b>Datum:</b> NAD83	
<b>Ahead Station:</b> 183	<b>Ahead Azimuth:</b> 02° 15' 13 "	<b>Ahead Distance:</b> 601.97	
<b>Back Station:</b>	<b>Back Azimuth:</b> ° ' "	<b>Back Distance:</b>	
<b>Data Entry:</b> GB	<b>Checked By:</b> MEM	<b>Date:</b> 11/30/2004	

- A: 28.5' TO BLOCK BUILDING CORNER
- B: 3.0' TO A UTILITY POLE
- C: 43.7' TO BLOCK BUILDING CORNER

## Point #183 AZ

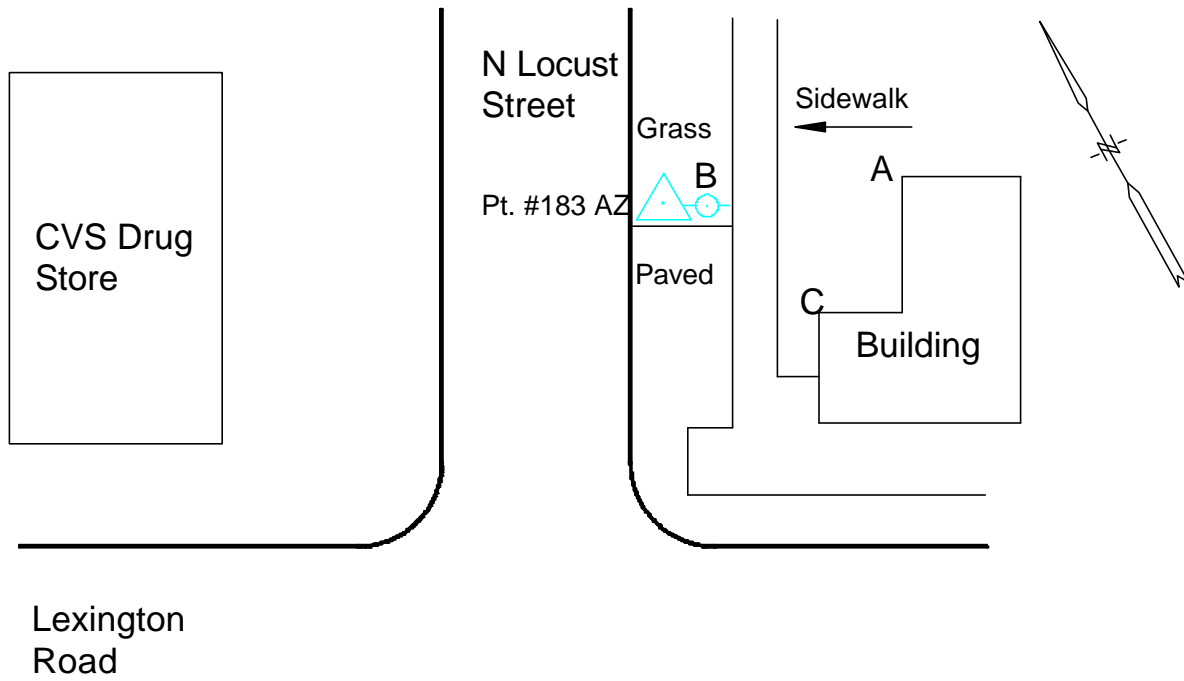




Photo Science, Inc.

# CONTROL REFERENCE SUMMARY

<b>Project Name:</b> Woodford County GIS		<b>Agency:</b> VMWC Planning	
<b>Quad Sheet:</b> Versailles	<b>County:</b> Woodford	<b>State:</b> KY	<b>Date Set:</b> 10/1/2004
<b>Station:</b> 184	<b>Type of Mark:</b> Concrete Monument	<b>Stamping on Mark:</b> 184	<b>Established By:</b> Photo Science, Inc.
<b>Elev (USFeet)</b> 910.55	<b>Elev (M):</b> 277.536	<b>Datum:</b> NAVD88	
<b>Northing (USFeet)</b> 216,720.34	<b>Easting (USFeet)</b> 1,505,402.04	<b>Datum:</b> KY North	
<b>Northing (M)</b> 66,056.492	<b>Easting (M)</b> 458,847.459	<b>Datum:</b> KY North	
<b>Latitude:</b> 38°05'39.04176"N	<b>Longitude:</b> 84°43'08.92225"W	<b>Datum:</b> NAD83	
<b>Ahead Station:</b>	<b>Ahead Azimuth:</b> °   '   "	<b>Ahead Distance:</b>	
<b>Back Station:</b> 184 AZ	<b>Back Azimuth:</b> 23 ° 52 ' 48 "	<b>Back Distance:</b> 857.11	
<b>Data Entry:</b> GB	<b>Checked By:</b> MEM	<b>Date:</b> 11/30/2004	

- A: 16.4' TO PLANK FENCE
- B: 31.8' TO A 24" HACKBERRY TREE
- C: 15.1' TO CENTER OF US 62

## Point #184

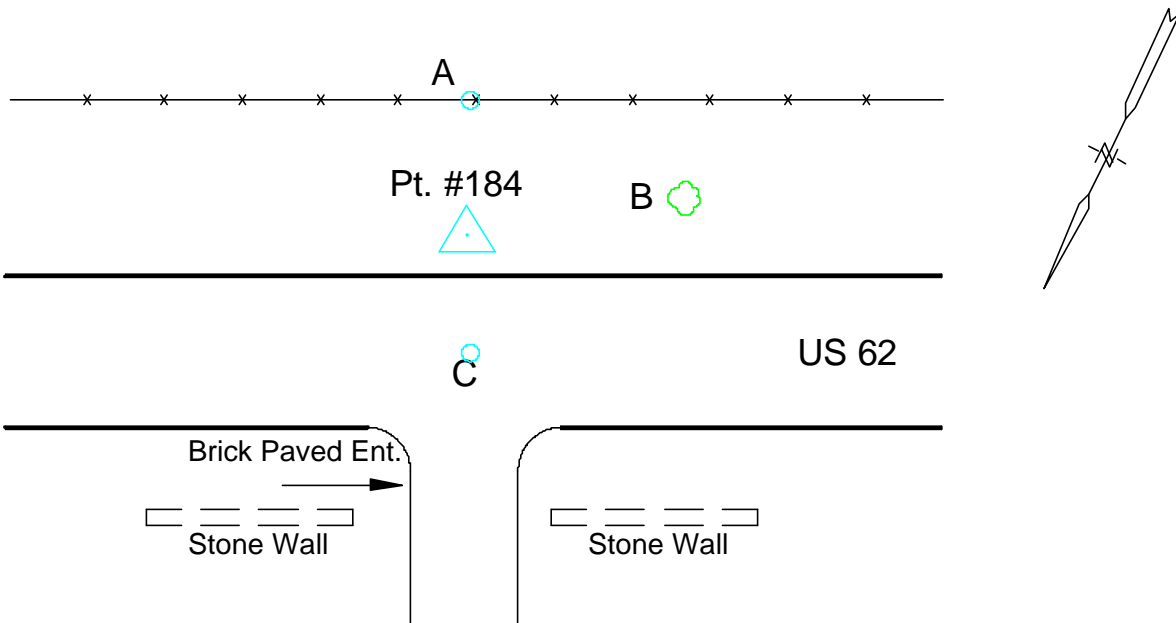




Photo Science, Inc.

# CONTROL REFERENCE SUMMARY

<b>Project Name:</b> Woodford County GIS		<b>Agency:</b> VMWC Planning	
<b>Quad Sheet:</b> Versailles	<b>County:</b> Woodford	<b>State:</b> KY	<b>Date Set:</b> 10/1/2004
<b>Station:</b> 184 AZ	<b>Type of Mark:</b> Concrete Monument	<b>Stamping on Mark:</b> 184 AZ	<b>Established By:</b> Photo Science, Inc.
<b>Elev (USFeet)</b> 894.43	<b>Elev (M):</b> 272.623	<b>Datum:</b> NAVD88	
<b>Northing (USFeet)</b> 217,504.08	<b>Easting (USFeet)</b> 1,505,749.02	<b>Datum:</b> KY North	
<b>Northing (M)</b> 66,295.376	<b>Easting (M)</b> 458,953.219	<b>Datum:</b> KY North	
<b>Latitude:</b> 38°05'46.80693"N	<b>Longitude:</b> 84°43'04.63163"W	<b>Datum:</b> NAD83	
<b>Ahead Station:</b> 184	<b>Ahead Azimuth:</b> 203 ° 52' 48 "	<b>Ahead Distance:</b> 857.11	
<b>Back Station:</b>	<b>Back Azimuth:</b> ° ' "	<b>Back Distance:</b>	
<b>Data Entry:</b> GB	<b>Checked By:</b> MEM	<b>Date:</b> 11/30/2004	

- A: 11.5' TO PLANK FENCE
- B: 34.1' TO A TELEPHONE POLE
- C: 23.2' TO A 15" WALNUT TREE

## Point #184 AZ

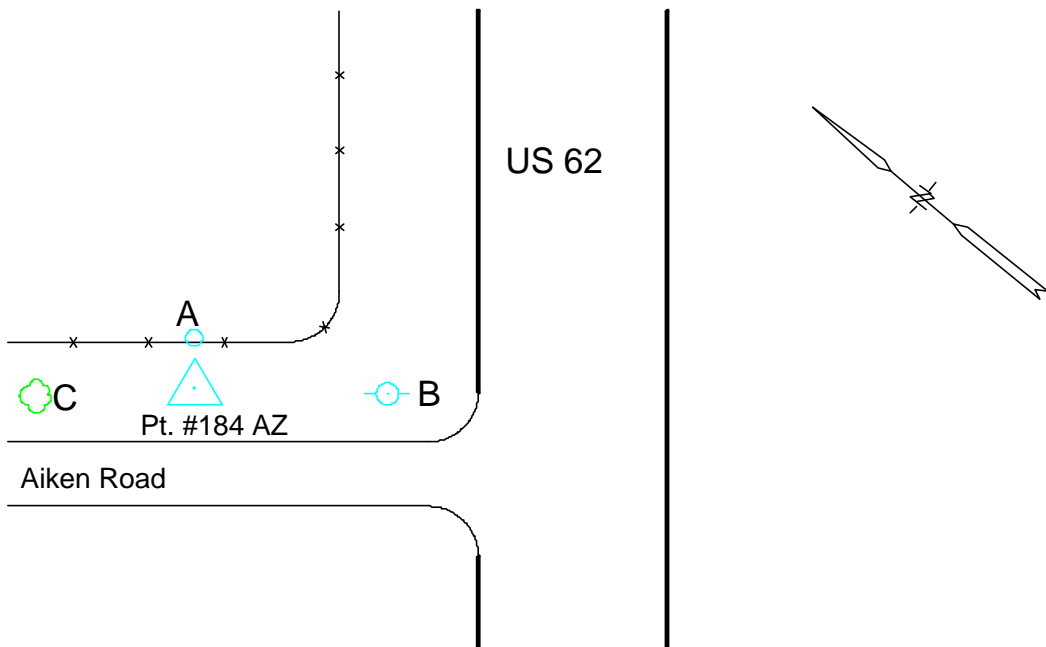






Photo Science, Inc.

# CONTROL REFERENCE SUMMARY

<b>Project Name:</b> Woodford County GIS		<b>Agency:</b> VMWC Planning	
<b>Quad Sheet:</b> Versailles	<b>County:</b> Woodford	<b>State:</b> KY	<b>Date Set:</b> 10/1/2004
<b>Station:</b> 185	<b>Type of Mark:</b> Concrete Monument	<b>Stamping on Mark:</b> 185	<b>Established By:</b> Photo Science, Inc.
<b>Elev (USFeet)</b> 886.35	<b>Elev (M):</b> 270.160	<b>Datum:</b> NAVD88	
<b>Northing (USFeet)</b> 220,575.40	<b>Easting (USFeet)</b> 1,499,663.22	<b>Datum:</b> KY North	
<b>Northing (M)</b> 67,231.516	<b>Easting (M)</b> 457,098.264	<b>Datum:</b> KY North	
<b>Latitude:</b> 38°06'16.85619"N	<b>Longitude:</b> 84°44'20.96490"W	<b>Datum:</b> NAD83	
<b>Ahead Station:</b>	<b>Ahead Azimuth:</b> °   '   "	<b>Ahead Distance:</b>	
<b>Back Station:</b> 185 AZ	<b>Back Azimuth:</b> 25 ° 07 ' 59 "	<b>Back Distance:</b> 997.94	
<b>Data Entry:</b> GB	<b>Checked By:</b> MEM	<b>Date:</b> 11/30/2004	

- A: 4.1' TO A WOVEN WIRE FENCE
- B: 21.2' TO A POWER POLE
- C: 13.3' TO CENTER OF AIKEN ROAD

## Point #185

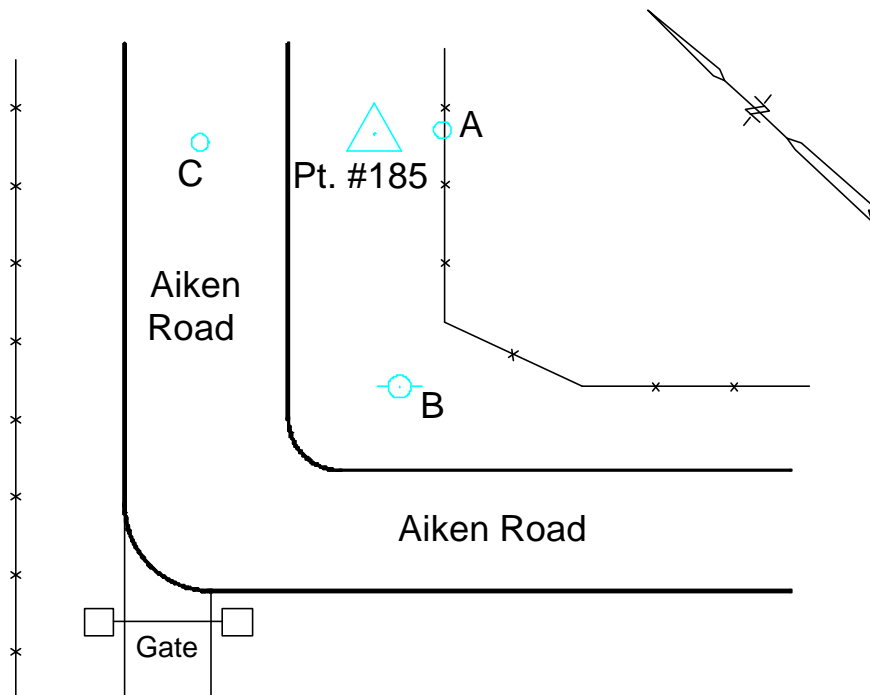




Photo Science, Inc.

# CONTROL REFERENCE SUMMARY

<b>Project Name:</b> Woodford County GIS		<b>Agency:</b> VMWC Planning	
<b>Quad Sheet:</b> Versailles	<b>County:</b> Woodford	<b>State:</b> KY	<b>Date Set:</b> 10/1/2004
<b>Station:</b> 185 AZ	<b>Type of Mark:</b> Concrete Monument	<b>Stamping on Mark:</b> 185 AZ	<b>Established By:</b> Photo Science, Inc.
<b>Elev (USFeet)</b> 904.95	<b>Elev (M):</b> 275.829	<b>Datum:</b> NAVD88	
<b>Northing (USFeet)</b> 221,478.86	<b>Easting (USFeet)</b> 1,500,087.07	<b>Datum:</b> KY North	
<b>Northing (M)</b> 67,506.892	<b>Easting (M)</b> 457,227.453	<b>Datum:</b> KY North	
<b>Latitude:</b> 38°06'25.80973"N	<b>Longitude:</b> 84°44'15.72201"W	<b>Datum:</b> NAD83	
<b>Ahead Station:</b> 185	<b>Ahead Azimuth:</b> 205 ° 07' 59 "	<b>Ahead Distance:</b> 997.94	
<b>Back Station:</b>	<b>Back Azimuth:</b> ° ' "	<b>Back Distance:</b>	
<b>Data Entry:</b> GB	<b>Checked By:</b> MEM	<b>Date:</b> 11/30/2004	

- A: 2.0' TO A WOVEN WIRE FENCE
- B: 14.8' TO CENTER OF AIKEN ROAD
- C: 103.0' TO A POWER POLE

## Point #185 AZ

