



Photo Science, Inc.

# CONTROL REFERENCE SUMMARY

<b>Project Name:</b> Woodford County GIS		<b>Agency:</b> VMWC Planning	
<b>Quad Sheet:</b> Frankfort East	<b>County:</b> Woodford	<b>State:</b> KY	<b>Date Set:</b> 10/1/2004
<b>Station:</b> 171	<b>Type of Mark:</b> Concrete Monument	<b>Stamping on Mark:</b> 171	<b>Established By:</b> Photo Science, Inc.
<b>Elev (USFeet)</b> 580.43	<b>Elev (M):</b> 176.915	<b>Datum:</b> NAVD88	
<b>Northing (USFeet)</b> 231,344.38	<b>Easting (USFeet)</b> 1,475,612.23	<b>Datum:</b> KY North	
<b>Northing (M)</b> 70,513.908	<b>Easting (M)</b> 449,767.507	<b>Datum:</b> KY North	
<b>Latitude:</b> 38°08'01.94280"N	<b>Longitude:</b> 84°49'22.69754"W	<b>Datum:</b> NAD83	
<b>Ahead Station:</b>	<b>Ahead Azimuth:</b> °   '   "	<b>Ahead Distance:</b>	
<b>Back Station:</b> 171 AZ	<b>Back Azimuth:</b> 203 ° 35 ' 50 "	<b>Back Distance:</b> 727.60	
<b>Data Entry:</b> GB	<b>Checked By:</b> MEM	<b>Date:</b> 11/30/2004	

- A: 48.0' TO A POWER POLE
- B: 60.9' TO CORNER OF CONCRETE PAD
- C: 15.3' TO CENTER OF HWY 1659

## Point #171

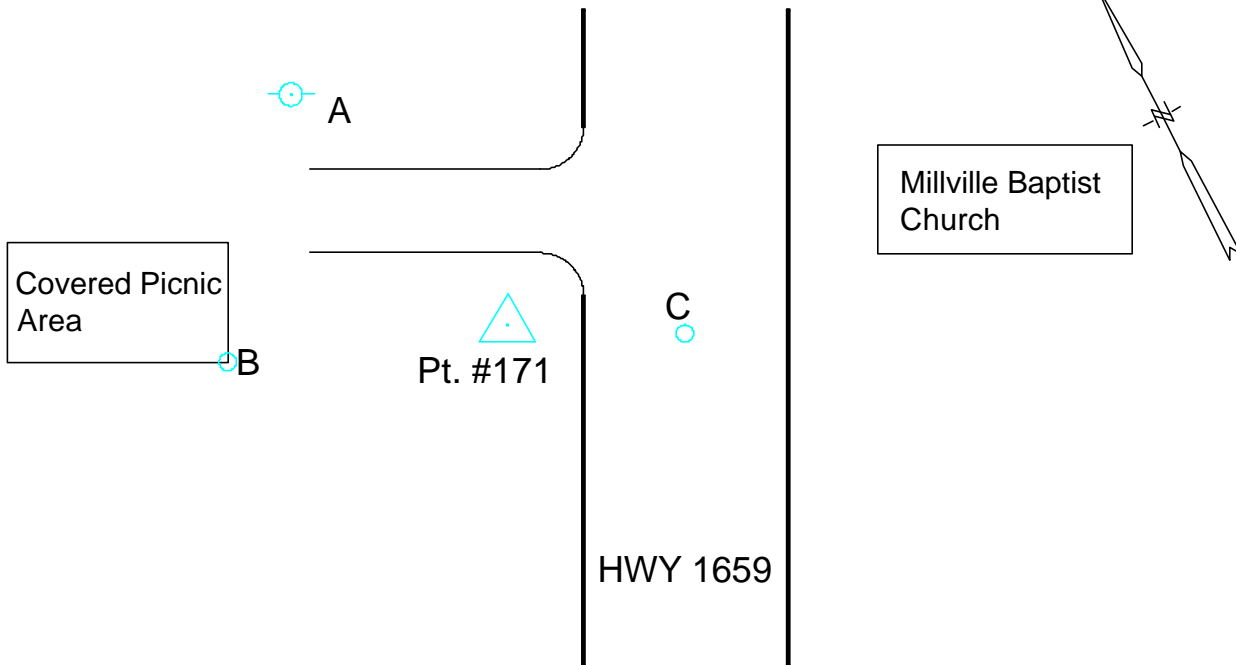




Photo Science, Inc.

# CONTROL REFERENCE SUMMARY

<b>Project Name:</b> Woodford County GIS		<b>Agency:</b> VMWC Planning	
<b>Quad Sheet:</b> Frankfort East	<b>County:</b> Woodford	<b>State:</b> KY	<b>Date Set:</b> 10/1/2004
<b>Station:</b> 171 AZ	<b>Type of Mark:</b> Concrete Monument	<b>Stamping on Mark:</b> 171 AZ	<b>Established By:</b> Photo Science, Inc.
<b>Elev (USFeet)</b> 586.55	<b>Elev (M):</b> 178.781	<b>Datum:</b> NAVD88	
<b>Northing (USFeet)</b> 230,677.62	<b>Easting (USFeet)</b> 1,475,320.97	<b>Datum:</b> KY North	
<b>Northing (M)</b> 70,310.679	<b>Easting (M)</b> 449,678.731	<b>Datum:</b> KY North	
<b>Latitude:</b> 38°07'55.33357"N	<b>Longitude:</b> 84°49'26.29082"W	<b>Datum:</b> NAD83	
<b>Ahead Station:</b> 171	<b>Ahead Azimuth:</b> 23 ° 35' 50 "	<b>Ahead Distance:</b> 727.6	
<b>Back Station:</b>	<b>Back Azimuth:</b> ° ' "	<b>Back Distance:</b>	
<b>Data Entry:</b> GB	<b>Checked By:</b> MEM	<b>Date:</b> 11/30/2004	

- A: 12.2' TO CENTER OF HWY 1659
- B: 14.5' TO MAILBOX @ 5760
- C: 41.6' TO POWER POLE # 9371

## Point #171 AZ

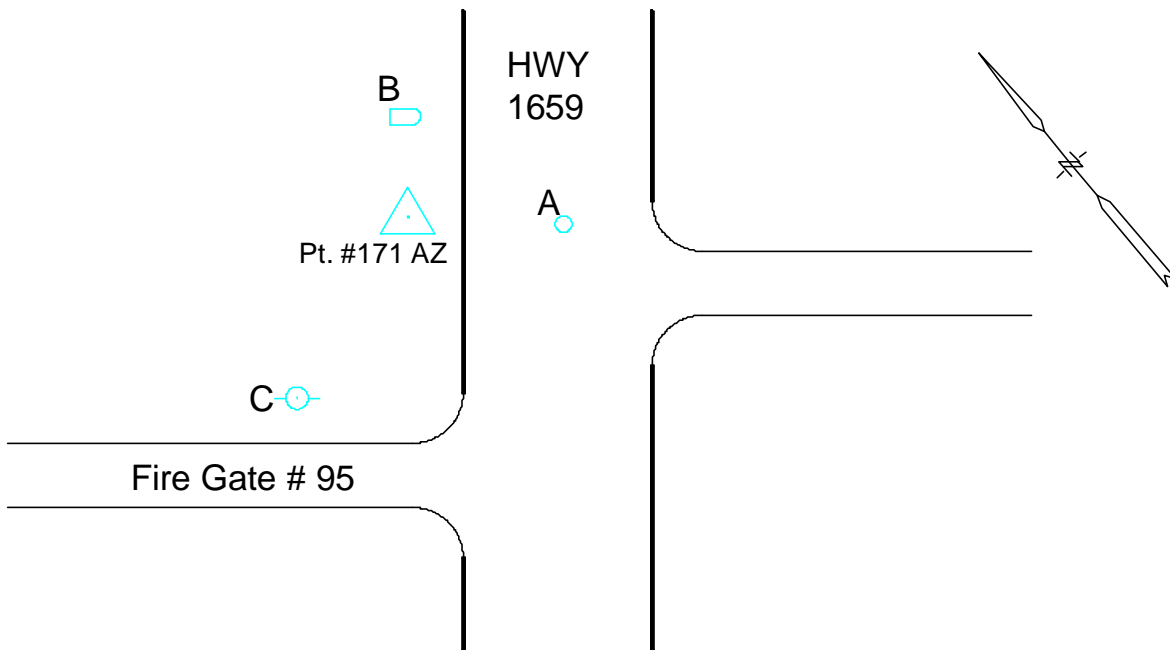




Photo Science, Inc.

# CONTROL REFERENCE SUMMARY

<b>Project Name:</b> Woodford County GIS		<b>Agency:</b> VMWC Planning	
<b>Quad Sheet:</b> Frankfort East	<b>County:</b> Woodford	<b>State:</b> KY	<b>Date Set:</b> 10/1/2004
<b>Station:</b> 172	<b>Type of Mark:</b> Concrete Monument	<b>Stamping on Mark:</b> 172	<b>Established By:</b> Photo Science, Inc.
<b>Elev (USFeet)</b> 846.42	<b>Elev (M):</b> 257.989	<b>Datum:</b> NAVD88	
<b>Northing (USFeet)</b> 239,419.44	<b>Easting (USFeet)</b> 1,477,105.49	<b>Datum:</b> KY North	
<b>Northing (M)</b> 72,975.191	<b>Easting (M)</b> 450,222.654	<b>Datum:</b> KY North	
<b>Latitude:</b> 38°09'21.86046"N	<b>Longitude:</b> 84°49'04.63157"W	<b>Datum:</b> NAD83	
<b>Ahead Station:</b>	<b>Ahead Azimuth:</b> °   '   "	<b>Ahead Distance:</b>	
<b>Back Station:</b> 172 AZ	<b>Back Azimuth:</b> 20 ° 13 ' 37 "	<b>Back Distance:</b> 833.83	
<b>Data Entry:</b> GB	<b>Checked By:</b> MEM	<b>Date:</b> 11/30/2004	

- A: 7.8' TO FENCE POST AND FLAG POLE
- B: 14.2' TO CENTER OF DUNCAN ROAD
- C: 23.8' TO "BOB HUBBARD HORSE TRANS." SIGN

## Point #172

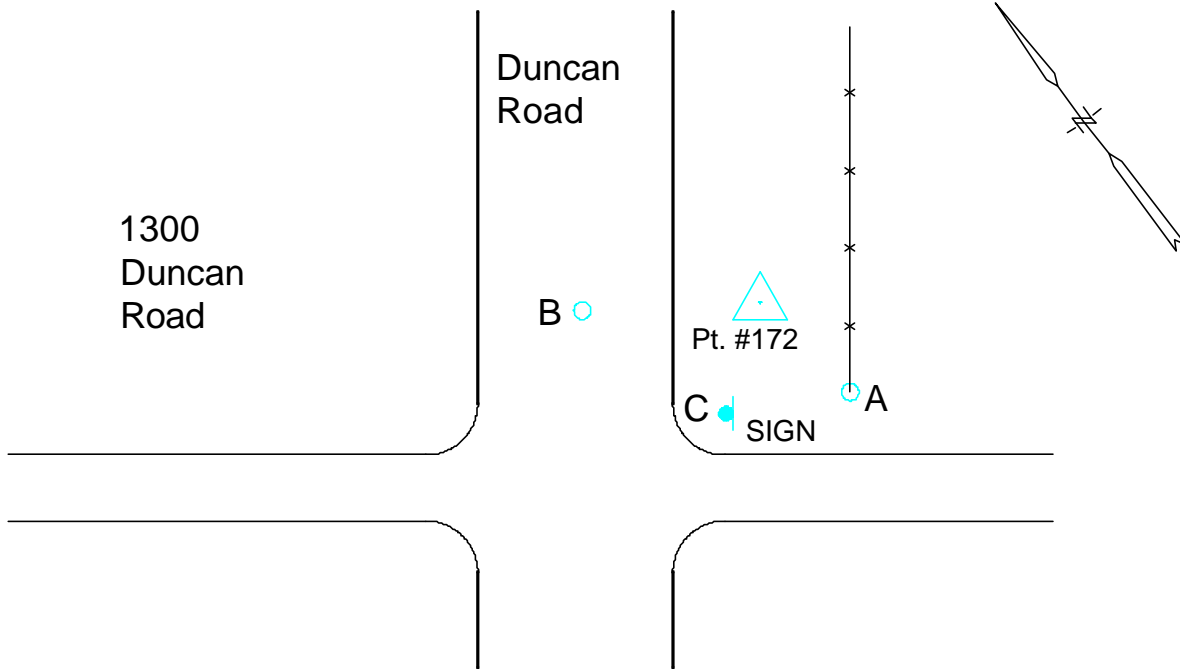




Photo Science, Inc.

# CONTROL REFERENCE SUMMARY

<b>Project Name:</b> Woodford County GIS		<b>Agency:</b> VMWC Planning	
<b>Quad Sheet:</b> Frankfort East	<b>County:</b> Woodford	<b>State:</b> KY	<b>Date Set:</b> 10/1/2004
<b>Station:</b> 172 AZ	<b>Type of Mark:</b> Concrete Monument	<b>Stamping on Mark:</b> 172 AZ	<b>Established By:</b> Photo Science, Inc.
<b>Elev (USFeet)</b> 842.34	<b>Elev (M):</b> 256.746	<b>Datum:</b> NAVD88	
<b>Northing (USFeet)</b> 240,201.85	<b>Easting (USFeet)</b> 1,477,393.78	<b>Datum:</b> KY North	
<b>Northing (M)</b> 73,213.670	<b>Easting (M)</b> 450,310.525	<b>Datum:</b> KY North	
<b>Latitude:</b> 38°09'29.61258"N	<b>Longitude:</b> 84°49'01.08253"W	<b>Datum:</b> NAD83	
<b>Ahead Station:</b> 172	<b>Ahead Azimuth:</b> 200 ° 13' 37 "	<b>Ahead Distance:</b> 833.83	
<b>Back Station:</b>	<b>Back Azimuth:</b> ° ' "	<b>Back Distance:</b>	
<b>Data Entry:</b> GB	<b>Checked By:</b> MEM	<b>Date:</b> 11/30/2004	

- A: 7.8' TO WIRE FENCE
- B: 14.5' TO CENTER OF DUNCAN ROAD
- C: 101.0' TO "HILL TOP DRIVE" SIGN

## Point #172 AZ

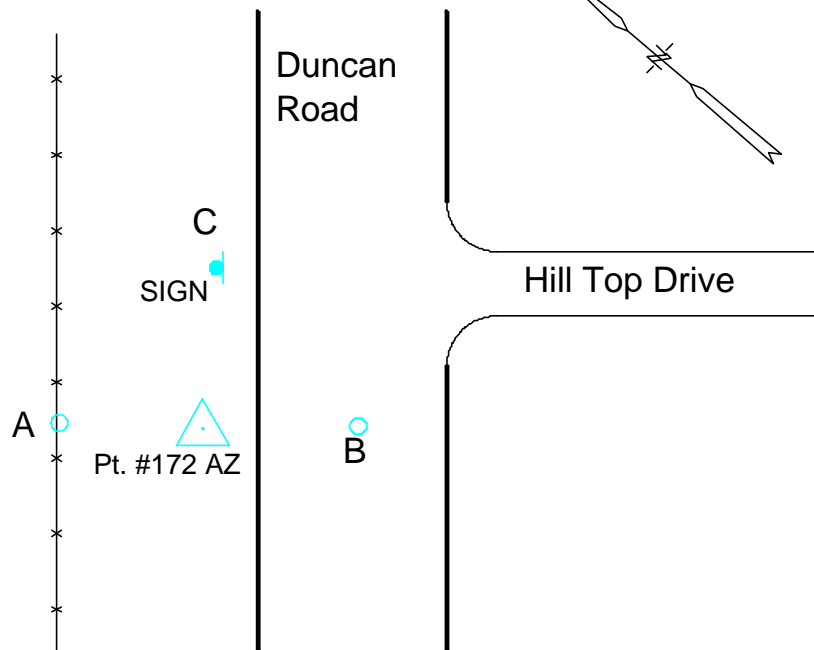




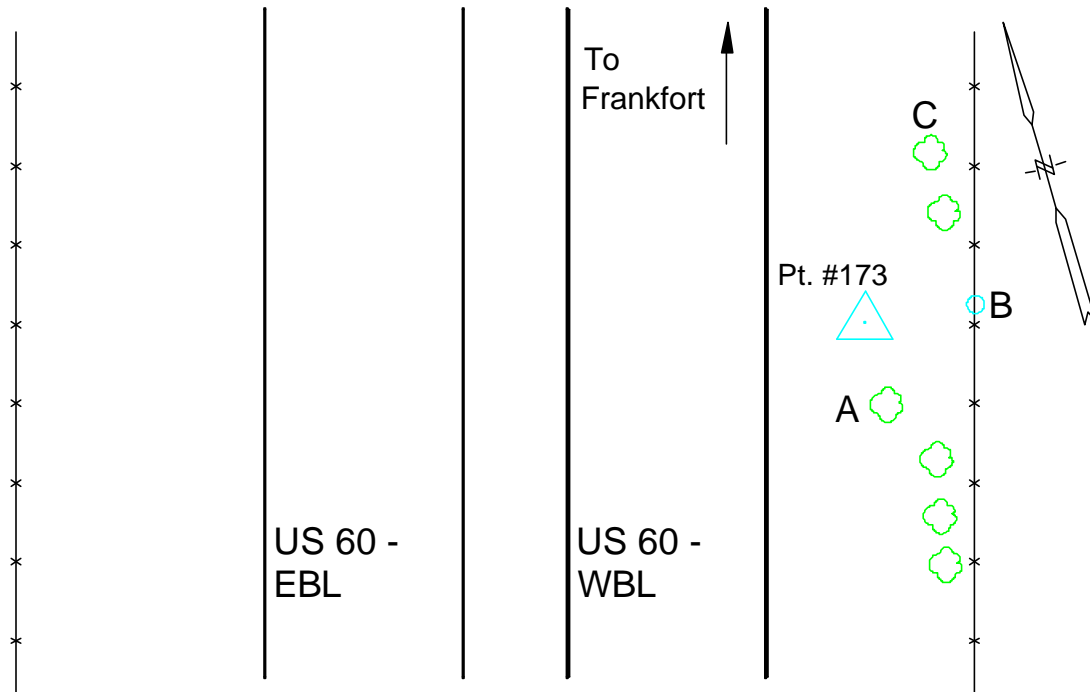
Photo Science, Inc.

# CONTROL REFERENCE SUMMARY

<b>Project Name:</b> Woodford County GIS		<b>Agency:</b> VMWC Planning	
<b>Quad Sheet:</b> Frankfort East	<b>County:</b> Woodford	<b>State:</b> KY	<b>Date Set:</b> 10/1/2004
<b>Station:</b> 173	<b>Type of Mark:</b> Concrete Monument	<b>Stamping on Mark:</b> 173	<b>Established By:</b> Photo Science, Inc.
<b>Elev (USFeet)</b> 868.33	<b>Elev (M):</b> 264.668	<b>Datum:</b> NAVD88	
<b>Northing (USFeet)</b> 237,766.75	<b>Easting (USFeet)</b> 1,482,674.19	<b>Datum:</b> KY North	
<b>Northing (M)</b> 72,471.450	<b>Easting (M)</b> 451,919.997	<b>Datum:</b> KY North	
<b>Latitude:</b> 38°09'05.85640"N	<b>Longitude:</b> 84°47'54.79061"W	<b>Datum:</b> NAD83	
<b>Ahead Station:</b>	<b>Ahead Azimuth:</b> °   '   "	<b>Ahead Distance:</b>	
<b>Back Station:</b> 173 AZ	<b>Back Azimuth:</b> 151 ° 51 ' 34 "	<b>Back Distance:</b> 1,915.36	
<b>Data Entry:</b> GB	<b>Checked By:</b> MEM	<b>Date:</b> 11/30/2004	

- A: 19.1' TO A 2" HAWTHORN TREE
- B: 29.5' TO A CARSONITE POST @ FENCE
- C: 45.5' TO A 12" ELM TREE

## Point #173



NOTE: STATION IS @ MILE MARK 0.95



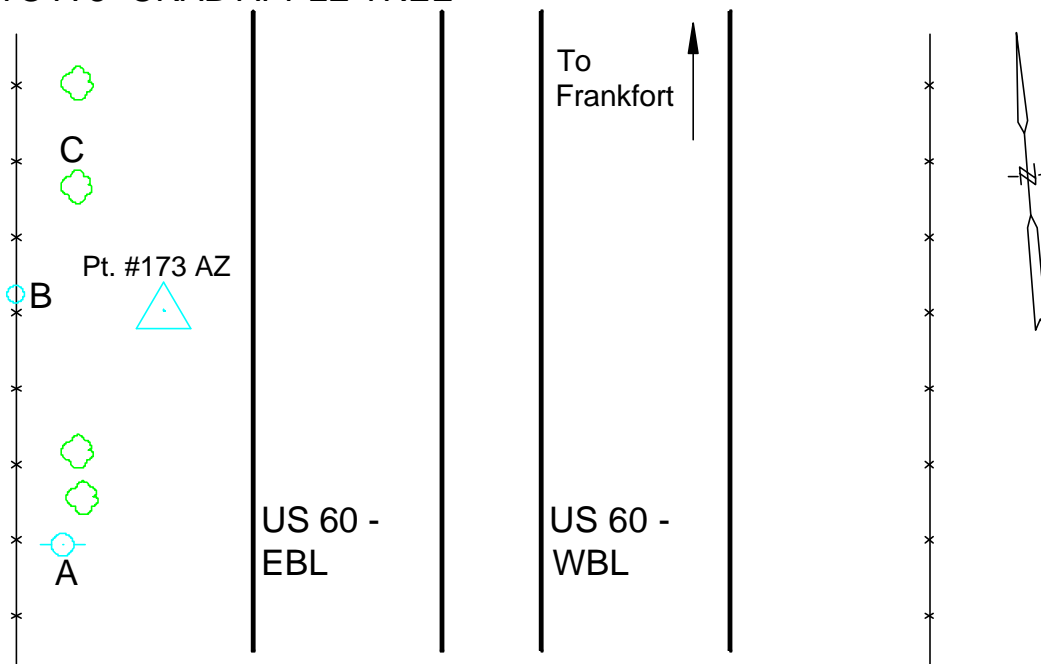
Photo Science, Inc.

# CONTROL REFERENCE SUMMARY

<b>Project Name:</b> Woodford County GIS		<b>Agency:</b> VMWC Planning	
<b>Quad Sheet:</b> Frankfort East	<b>County:</b> Woodford	<b>State:</b> KY	<b>Date Set:</b> 10/1/2004
<b>Station:</b> 173 AZ	<b>Type of Mark:</b> Concrete Monument	<b>Stamping on Mark:</b> 173 AZ	<b>Established By:</b> Photo Science, Inc.
<b>Elev (USFeet)</b> 852.28	<b>Elev (M):</b> 259.775	<b>Datum:</b> NAVD88	
<b>Northing (USFeet)</b> 236,077.80	<b>Easting (USFeet)</b> 1,483,577.54	<b>Datum:</b> KY North	
<b>Northing (M)</b> 71,956.657	<b>Easting (M)</b> 452,195.339	<b>Datum:</b> KY North	
<b>Latitude:</b> 38°08'49.21326"N	<b>Longitude:</b> 84°47'43.35664"W	<b>Datum:</b> NAD83	
<b>Ahead Station:</b> 173	<b>Ahead Azimuth:</b> 331 ° 51' 34 "	<b>Ahead Distance:</b> 1915.36	
<b>Back Station:</b>	<b>Back Azimuth:</b> ° ' "	<b>Back Distance:</b>	
<b>Data Entry:</b> GB	<b>Checked By:</b> MEM	<b>Date:</b> 11/30/2004	

- A: 108.0' TO POWER POLE # 531 & 86
- B: 44.6' TO A CARSONITE POST @ FENCE
- C: 36.4' TO A 3" CRAB APPLE TREE

## Point #173 AZ



NOTE: STATION IS @ MILE MARK 1.28



Photo Science, Inc.

# CONTROL REFERENCE SUMMARY

<b>Project Name:</b> Woodford County GIS		<b>Agency:</b> VMWC Planning	
<b>Quad Sheet:</b> Frankfort East	<b>County:</b> Woodford	<b>State:</b> KY	<b>Date Set:</b> 10/1/2004
<b>Station:</b> 174	<b>Type of Mark:</b> Concrete Monument	<b>Stamping on Mark:</b> 174	<b>Established By:</b> Photo Science, Inc.
<b>Elev (USFeet)</b> 838.02	<b>Elev (M):</b> 255.429	<b>Datum:</b> NAVD88	
<b>Northing (USFeet)</b> 240,123.08	<b>Easting (USFeet)</b> 1,488,609.87	<b>Datum:</b> KY North	
<b>Northing (M)</b> 73,189.661	<b>Easting (M)</b> 453,729.196	<b>Datum:</b> KY North	
<b>Latitude:</b> 38°09'29.49289"N	<b>Longitude:</b> 84°46'40.65217"W	<b>Datum:</b> NAD83	
<b>Ahead Station:</b>	<b>Ahead Azimuth:</b> °   '   "	<b>Ahead Distance:</b>	
<b>Back Station:</b> 174 AZ	<b>Back Azimuth:</b> 125 ° 10 ' 22 "	<b>Back Distance:</b> 635.82	
<b>Data Entry:</b> GB	<b>Checked By:</b> MEM	<b>Date:</b> 11/30/2004	

- A: 119.2' TO FENCE CORNER
- B: 5.8' TO A CARSONITE POST @ FENCE
- C: 35.0' TO A TELEPHONE POLE

## Point #174

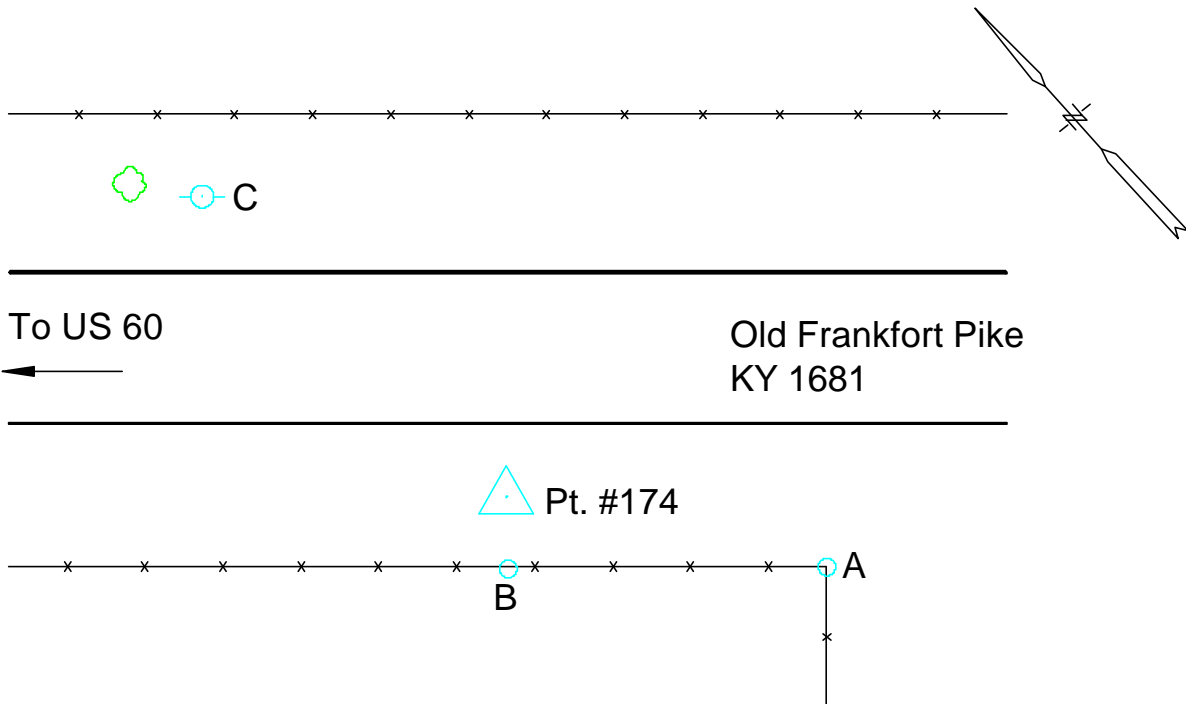




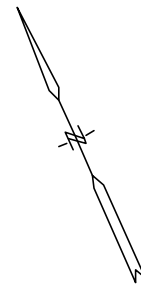
Photo Science, Inc.

# CONTROL REFERENCE SUMMARY

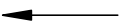
<b>Project Name:</b> Woodford County GIS		<b>Agency:</b> VMWC Planning	
<b>Quad Sheet:</b> Frankfort East	<b>County:</b> Woodford	<b>State:</b> KY	<b>Date Set:</b> 10/1/2004
<b>Station:</b> 174 AZ	<b>Type of Mark:</b> Concrete Monument	<b>Stamping on Mark:</b> 174 AZ	<b>Established By:</b> Photo Science, Inc.
<b>Elev (USFeet)</b> 856.52	<b>Elev (M):</b> 261.068	<b>Datum:</b> NAVD88	
<b>Northing (USFeet)</b> 239,756.82	<b>Easting (USFeet)</b> 1,489,129.60	<b>Datum:</b> KY North	
<b>Northing (M)</b> 73,078.025	<b>Easting (M)</b> 453,887.610	<b>Datum:</b> KY North	
<b>Latitude:</b> 38°09'25.90158"N	<b>Longitude:</b> 84°46'34.11901"W	<b>Datum:</b> NAD83	
<b>Ahead Station:</b> 174	<b>Ahead Azimuth:</b> 305 ° 10' 22 "	<b>Ahead Distance:</b> 635.82	
<b>Back Station:</b>	<b>Back Azimuth:</b> ° ' "	<b>Back Distance:</b>	
<b>Data Entry:</b> GB	<b>Checked By:</b> MEM	<b>Date:</b> 11/30/2004	

- A: 6.8' TO A CARSONITE POST @ FENCE
- B: 54.3' TO A TELEPHONE POLE
- C: 56.7' TO FENCE CORNER

## Point #174 AZ



To US 60



Old Frankfort Pike  
KY 1681



Wright of Way Farm







Photo Science, Inc.

# CONTROL REFERENCE SUMMARY

<b>Project Name:</b> Woodford County GIS		<b>Agency:</b> VMWC Planning	
<b>Quad Sheet:</b> Frankfort East	<b>County:</b> Woodford	<b>State:</b> KY	<b>Date Set:</b> 10/1/2004
<b>Station:</b> 175	<b>Type of Mark:</b> Concrete Monument	<b>Stamping on Mark:</b> 175	<b>Established By:</b> Photo Science, Inc.
<b>Elev (USFeet)</b> 866.05	<b>Elev (M):</b> 263.973	<b>Datum:</b> NAVD88	
<b>Northing (USFeet)</b> 233,449.86	<b>Easting (USFeet)</b> 1,492,746.17	<b>Datum:</b> KY North	
<b>Northing (M)</b> 71,155.660	<b>Easting (M)</b> 454,989.943	<b>Datum:</b> KY North	
<b>Latitude:</b> 38°08'23.75560"N	<b>Longitude:</b> 84°45'48.40018"W	<b>Datum:</b> NAD83	
<b>Ahead Station:</b>	<b>Ahead Azimuth:</b> °   '   "	<b>Ahead Distance:</b>	
<b>Back Station:</b> 175 AZ	<b>Back Azimuth:</b> 200 ° 54 ' 47 "	<b>Back Distance:</b> 1,014.26	
<b>Data Entry:</b> GB	<b>Checked By:</b> MEM	<b>Date:</b> 11/30/2004	

- A: 19.5' TO A CARSONITE POST @ FENCE
- B: 54.0' TO FENCE CORNER
- C: 40.2' TO TELEPHONE BOX #1076 - 200

## Point #175

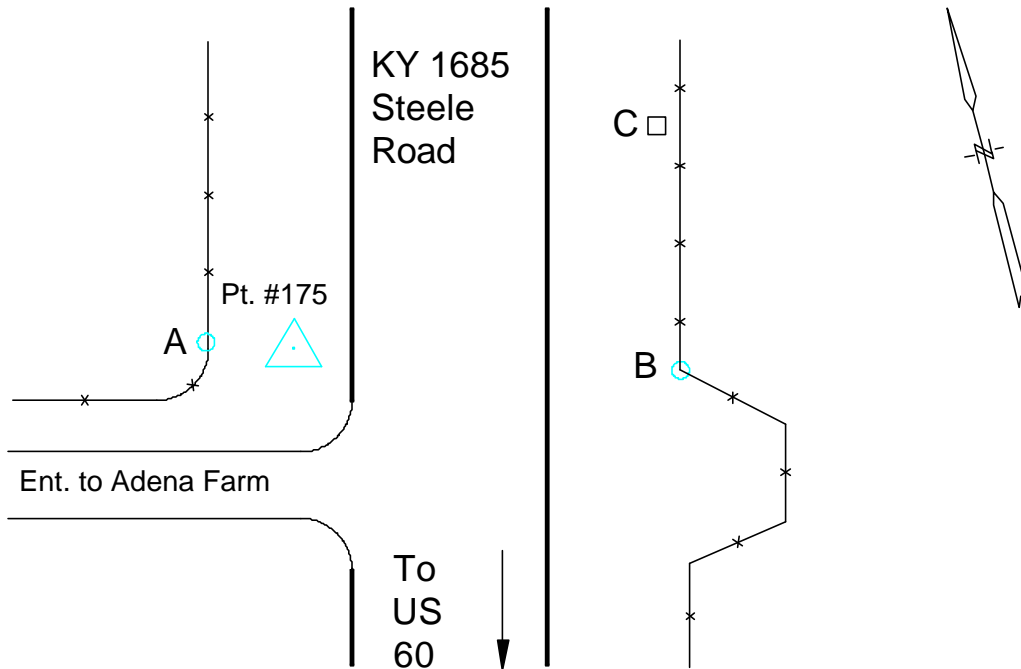




Photo Science, Inc.

# CONTROL REFERENCE SUMMARY

<b>Project Name:</b> Woodford County GIS		<b>Agency:</b> VMWC Planning	
<b>Quad Sheet:</b> Frankfort East	<b>County:</b> Woodford	<b>State:</b> KY	<b>Date Set:</b> 10/1/2004
<b>Station:</b> 175 AZ	<b>Type of Mark:</b> Concrete Monument	<b>Stamping on Mark:</b> 175 AZ	<b>Established By:</b> Photo Science, Inc.
<b>Elev (USFeet)</b> 848.89	<b>Elev (M):</b> 258.742	<b>Datum:</b> NAVD88	
<b>Northing (USFeet)</b> 232,502.42	<b>Easting (USFeet)</b> 1,492,384.13	<b>Datum:</b> KY North	
<b>Northing (M)</b> 70,866.879	<b>Easting (M)</b> 454,879.593	<b>Datum:</b> KY North	
<b>Latitude:</b> 38°08'14.36964"N	<b>Longitude:</b> 84°45'52.86551"W	<b>Datum:</b> NAD83	
<b>Ahead Station:</b> 175	<b>Ahead Azimuth:</b> 20° 54' 47 "	<b>Ahead Distance:</b> 1014.26	
<b>Back Station:</b>	<b>Back Azimuth:</b> ° ' "	<b>Back Distance:</b>	
<b>Data Entry:</b> GB	<b>Checked By:</b> MEM	<b>Date:</b> 11/30/2004	

- A: 2.4' TO A CARSONITE POST @ FENCE
- B: 33.0' TO A TELEPHONE RISER POST
- C: 54.4' TO A 12" PINE TREE

## Point #175 AZ

