



Photo Science, Inc.

# CONTROL REFERENCE SUMMARY

<b>Project Name:</b> Woodford County GIS		<b>Agency:</b> VMWC Planning	
<b>Quad Sheet:</b> Tyrone	<b>County:</b> Woodford	<b>State:</b> KY	<b>Date Set:</b> 10/1/2004
<b>Station:</b> 166	<b>Type of Mark:</b> Concrete Monument	<b>Stamping on Mark:</b> 166	<b>Established By:</b> Photo Science, Inc.
<b>Elev (USFeet)</b> 514.50	<b>Elev (M):</b> 156.820	<b>Datum:</b> NAVD88	
<b>Northing (USFeet)</b> 214,097.68	<b>Easting (USFeet)</b> 1,474,476.92	<b>Datum:</b> KY North	
<b>Northing (M)</b> 65,257.103	<b>Easting (M)</b> 449,421.464	<b>Datum:</b> KY North	
<b>Latitude:</b> 38°05'11.37979"N	<b>Longitude:</b> 84°49'35.55555"W	<b>Datum:</b> NAD83	
<b>Ahead Station:</b>	<b>Ahead Azimuth:</b> ° ' "	<b>Ahead Distance:</b>	
<b>Back Station:</b> 166 AZ	<b>Back Azimuth:</b> 168 ° 07 ' 57 "	<b>Back Distance:</b> 618.24	
<b>Data Entry:</b> GB	<b>Checked By:</b> MEM	<b>Date:</b> 11/30/2004	

- A: 34.1' TO A CARSONITE POST @ POWER POLE
- B: 36.2' TO A 22" PINE TREE
- C: 34.7' TO CORNER OF PRIVACY FENCE

## Point #166

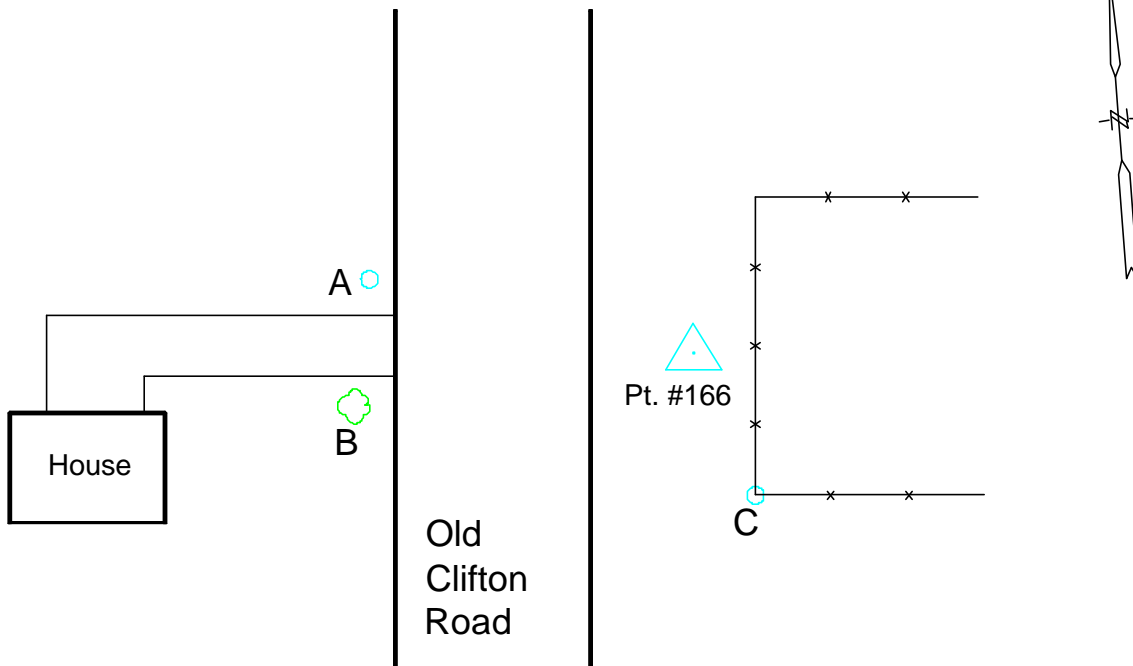




Photo Science, Inc.

# CONTROL REFERENCE SUMMARY

<b>Project Name:</b> Woodford County GIS		<b>Agency:</b> VMWC Planning	
<b>Quad Sheet:</b> Tyrone	<b>County:</b> Woodford	<b>State:</b> KY	<b>Date Set:</b> 10/1/2004
<b>Station:</b> 166 AZ	<b>Type of Mark:</b> Concrete Monument	<b>Stamping on Mark:</b> 166 AZ	<b>Established By:</b> Photo Science, Inc.
<b>Elev (USFeet)</b> 511.76	<b>Elev (M):</b> 155.985	<b>Datum:</b> NAVD88	
<b>Northing (USFeet)</b> 213,492.65	<b>Easting (USFeet)</b> 1,474,604.06	<b>Datum:</b> KY North	
<b>Northing (M)</b> 65,072.690	<b>Easting (M)</b> 449,460.216	<b>Datum:</b> KY North	
<b>Latitude:</b> 38°05'05.40655"N	<b>Longitude:</b> 84°49'33.91799"W	<b>Datum:</b> NAD83	
<b>Ahead Station:</b> 166	<b>Ahead Azimuth:</b> 348 ° 07' 57 "	<b>Ahead Distance:</b> 618.24	
<b>Back Station:</b>	<b>Back Azimuth:</b> ° ' "	<b>Back Distance:</b>	
<b>Data Entry:</b> GB	<b>Checked By:</b> MEM	<b>Date:</b> 11/30/2004	

A: 26.2' TO A CARSONITE POST @ FENCE

B: 17.2' TO CENTER OF DRIVE @ FIREGATE 26

C: 27.6' TO A WATER METER

## Point #166 AZ

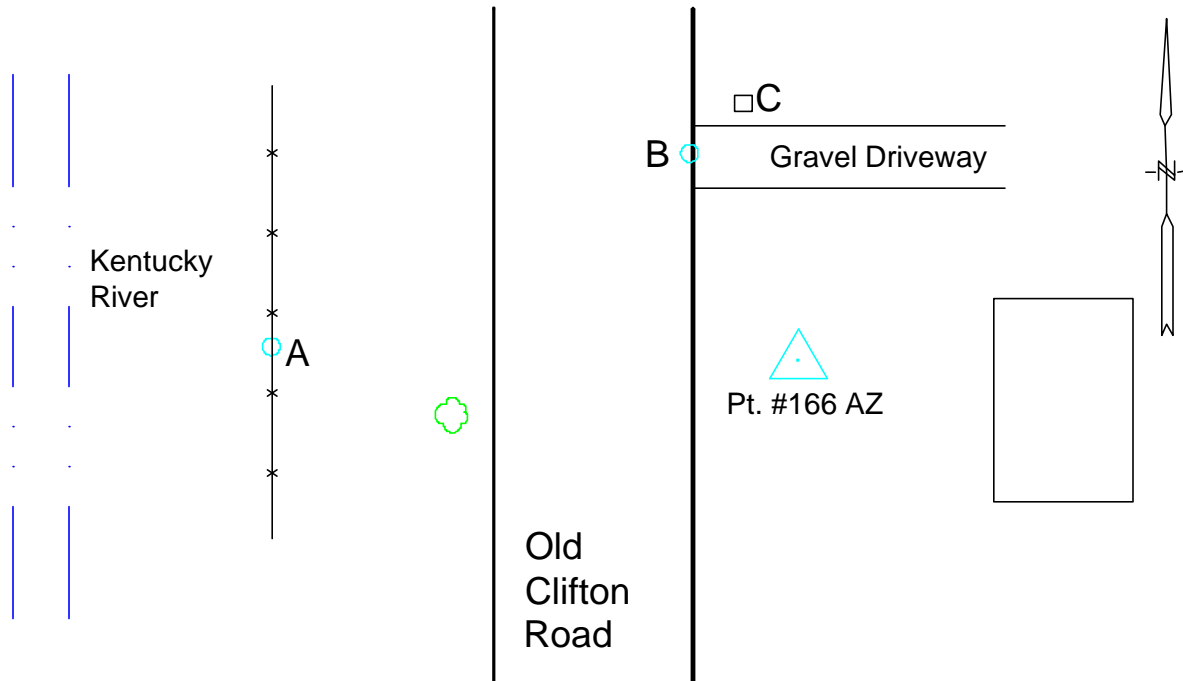




Photo Science, Inc.

# CONTROL REFERENCE SUMMARY

<b>Project Name:</b> Woodford County GIS		<b>Agency:</b> VMWC Planning	
<b>Quad Sheet:</b> Tyrone	<b>County:</b> Woodford	<b>State:</b> KY	<b>Date Set:</b> 10/1/2004
<b>Station:</b> 167	<b>Type of Mark:</b> Concrete Monument	<b>Stamping on Mark:</b> 167	<b>Established By:</b> Photo Science, Inc.
<b>Elev (USFeet)</b> 832.65	<b>Elev (M):</b> 253.792	<b>Datum:</b> NAVD88	
<b>Northing (USFeet)</b> 220,254.20	<b>Easting (USFeet)</b> 1,472,755.84	<b>Datum:</b> KY North	
<b>Northing (M)</b> 67,133.614	<b>Easting (M)</b> 448,896.878	<b>Datum:</b> KY North	
<b>Latitude:</b> 38°06'12.13329"N	<b>Longitude:</b> 84°49'57.56914"W	<b>Datum:</b> NAD83	
<b>Ahead Station:</b>	<b>Ahead Azimuth:</b> °   '   "	<b>Ahead Distance:</b>	
<b>Back Station:</b> 167 AZ	<b>Back Azimuth:</b> 356 ° 00 ' 29 "	<b>Back Distance:</b> 682.91	
<b>Data Entry:</b> GB	<b>Checked By:</b> MEM	<b>Date:</b> 11/30/2004	

- A: 4.8' TO WIRE FENCE
- B: 20.9' TO CENTER OF HWY 1964
- C: 49.2' TO A 12" ASH TREE

## Point #167

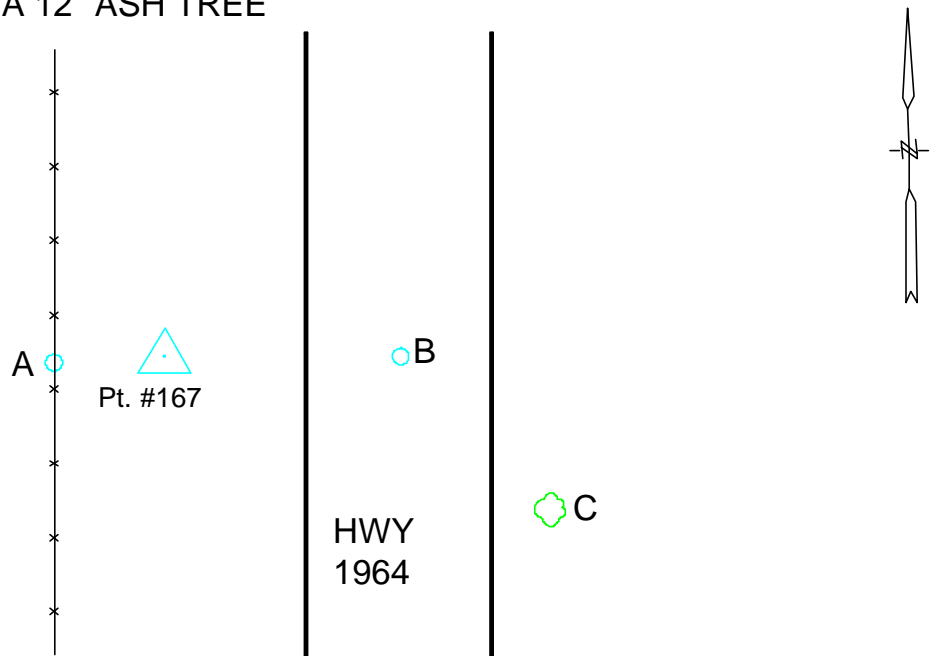




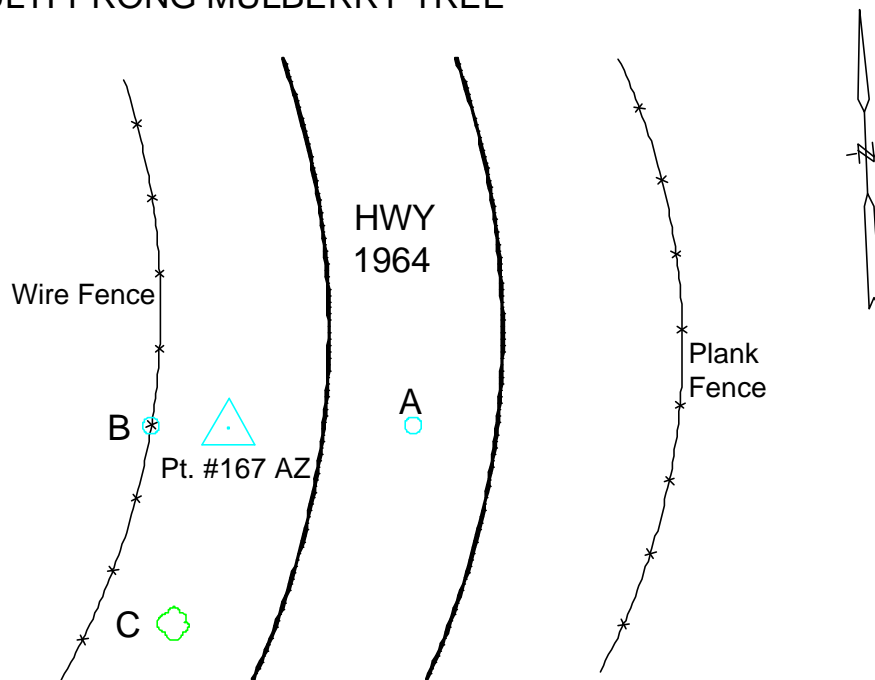
Photo Science, Inc.

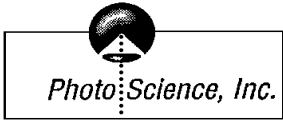
# CONTROL REFERENCE SUMMARY

<b>Project Name:</b> Woodford County GIS		<b>Agency:</b> VMWC Planning	
<b>Quad Sheet:</b> Tyrone	<b>County:</b> Woodford	<b>State:</b> KY	<b>Date Set:</b> 10/1/2004
<b>Station:</b> 167 AZ	<b>Type of Mark:</b> Concrete Monument	<b>Stamping on Mark:</b> 167 AZ	<b>Established By:</b> Photo Science, Inc.
<b>Elev (USFeet)</b> 836.18	<b>Elev (M):</b> 254.868	<b>Datum:</b> NAVD88	
<b>Northing (USFeet)</b> 220,935.45	<b>Easting (USFeet)</b> 1,472,708.30	<b>Datum:</b> KY North	
<b>Northing (M)</b> 67,341.260	<b>Easting (M)</b> 448,882.388	<b>Datum:</b> KY North	
<b>Latitude:</b> 38°06'18.86479"N	<b>Longitude:</b> 84°49'58.21790"W	<b>Datum:</b> NAD83	
<b>Ahead Station:</b> 167	<b>Ahead Azimuth:</b> 176° 00' 29 "	<b>Ahead Distance:</b> 682.91	
<b>Back Station:</b>	<b>Back Azimuth:</b> ° ' "	<b>Back Distance:</b>	
<b>Data Entry:</b> GB	<b>Checked By:</b> MEM	<b>Date:</b> 11/30/2004	

- A: 19.8' TO CENTER OF HWY 1964
- B: 8.5' TO A CARSONITE POST @ WIRE FENCE
- C: 136.0' TO A MULTI-PRONG MULBERRY TREE

## Point #167 AZ





# CONTROL REFERENCE SUMMARY

<b>Project Name:</b> Woodford County GIS		<b>Agency:</b> VMWC Planning	
<b>Quad Sheet:</b> Tyrone	<b>County:</b> Woodford	<b>State:</b> KY	<b>Date Set:</b> 10/1/2004
<b>Station:</b> 168	<b>Type of Mark:</b> Concrete Monument	<b>Stamping on Mark:</b> 168	<b>Established By:</b> Photo Science, Inc.
<b>Elev (USFeet)</b> 773.02	<b>Elev (M):</b> 235.617	<b>Datum:</b> NAVD88	
<b>Northing (USFeet)</b> 221,460.90	<b>Easting (USFeet)</b> 1,467,414.40	<b>Datum:</b> KY North	
<b>Northing (M)</b> 67,501.417	<b>Easting (M)</b> 447,268.804	<b>Datum:</b> KY North	
<b>Latitude:</b> 38°06'23.72282"N	<b>Longitude:</b> 84°51'04.49142"W	<b>Datum:</b> NAD83	
<b>Ahead Station:</b>	<b>Ahead Azimuth:</b> °   '   "	<b>Ahead Distance:</b>	
<b>Back Station:</b> 168 AZ	<b>Back Azimuth:</b> 168 ° 19 ' 25 "	<b>Back Distance:</b> 626.64	
<b>Data Entry:</b> GB	<b>Checked By:</b> MEM	<b>Date:</b> 11/30/2004	

A: 37.8' TO A CARSONITE POST @ WIRE FENCE  
 B: 48.7' TO A 5" MAPLE TREE  
 C: 10.6' TO A 2" OAK TREE

## Point #168

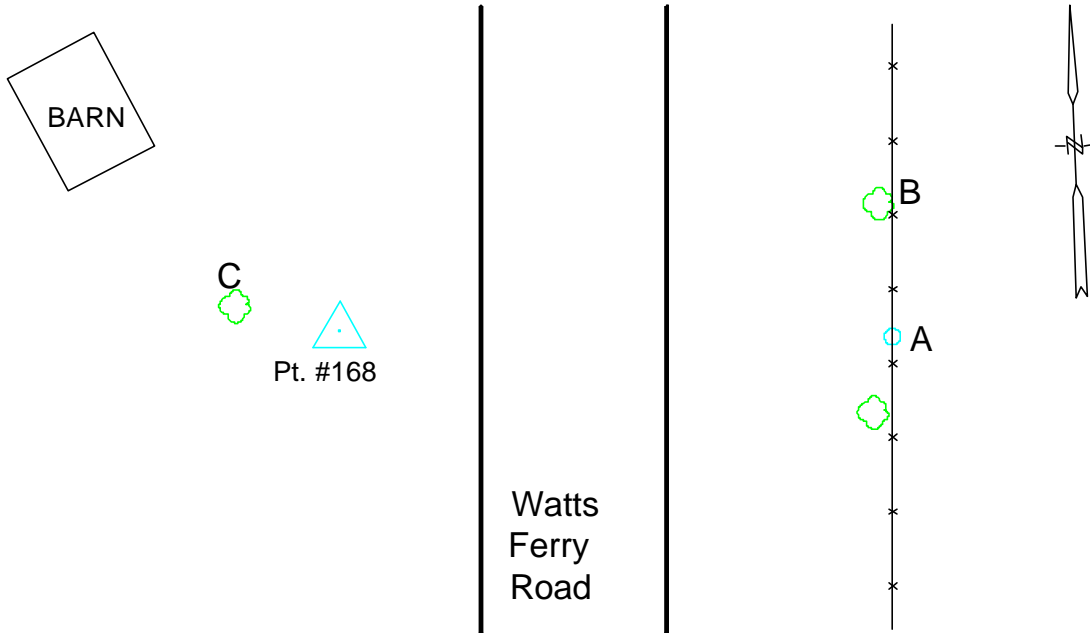




Photo Science, Inc.

# CONTROL REFERENCE SUMMARY

<b>Project Name:</b> Woodford County GIS		<b>Agency:</b> VMWC Planning	
<b>Quad Sheet:</b> Tyrone	<b>County:</b> Woodford	<b>State:</b> KY	<b>Date Set:</b> 10/1/2004
<b>Station:</b> 168 AZ	<b>Type of Mark:</b> Concrete Monument	<b>Stamping on Mark:</b> 168 AZ	<b>Established By:</b> Photo Science, Inc.
<b>Elev (USFeet)</b> 777.29	<b>Elev (M):</b> 236.918	<b>Datum:</b> NAVD88	
<b>Northing (USFeet)</b> 220,847.23	<b>Easting (USFeet)</b> 1,467,541.22	<b>Datum:</b> KY North	
<b>Northing (M)</b> 67,314.370	<b>Easting (M)</b> 447,307.458	<b>Datum:</b> KY North	
<b>Latitude:</b> 38°06'17.66453"N	<b>Longitude:</b> 84°51'02.85472"W	<b>Datum:</b> NAD83	
<b>Ahead Station:</b> 168	<b>Ahead Azimuth:</b> 348 ° 19' 25 "	<b>Ahead Distance:</b> 626.64	
<b>Back Station:</b>	<b>Back Azimuth:</b> ° ' "	<b>Back Distance:</b>	
<b>Data Entry:</b> GB	<b>Checked By:</b> MEM	<b>Date:</b> 11/30/2004	

A: 8.8' TO CENTER OF WATTS FERRY ROAD  
 B: 3.0' TO A CARSONITE POST @ WIRE FENCE  
 C: 81.5' TO CORNER FENCE POST

## Point #168 AZ

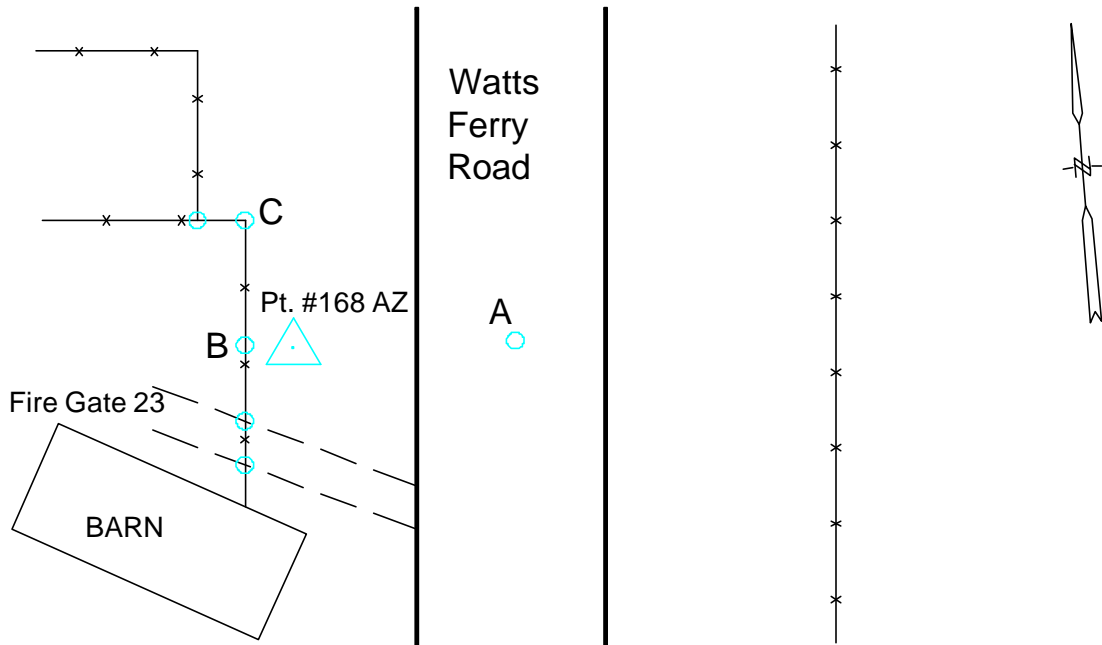




Photo Science, Inc.

# CONTROL REFERENCE SUMMARY

<b>Project Name:</b> Woodford County GIS		<b>Agency:</b> VMWC Planning	
<b>Quad Sheet:</b> Frankfort East	<b>County:</b> Woodford	<b>State:</b> KY	<b>Date Set:</b> 10/1/2004
<b>Station:</b> 169	<b>Type of Mark:</b> Concrete Monument	<b>Stamping on Mark:</b> 169	<b>Established By:</b> Photo Science, Inc.
<b>Elev (USFeet)</b> 502.54	<b>Elev (M):</b> 153.174	<b>Datum:</b> NAVD88	
<b>Northing (USFeet)</b> 231,754.50	<b>Easting (USFeet)</b> 1,463,699.96	<b>Datum:</b> KY North	
<b>Northing (M)</b> 70,638.913	<b>Easting (M)</b> 446,136.640	<b>Datum:</b> KY North	
<b>Latitude:</b> 38°08'05.23806"N	<b>Longitude:</b> 84°51'51.82186"W	<b>Datum:</b> NAD83	
<b>Ahead Station:</b>	<b>Ahead Azimuth:</b> °   '   "	<b>Ahead Distance:</b>	
<b>Back Station:</b> 169 AZ	<b>Back Azimuth:</b> 183 ° 53 ' 36 "	<b>Back Distance:</b> 609.31	
<b>Data Entry:</b> GB	<b>Checked By:</b> MEM	<b>Date:</b> 11/30/2004	

- A: 9.0' TO A CARSONITE POST @ SPLIT RAIL FENCE
- B: 10.0' TO CENTER OF SHOREACRES ROAD
- C: 32.7' TO MAILBOX @ 1350-1375

## Point #169

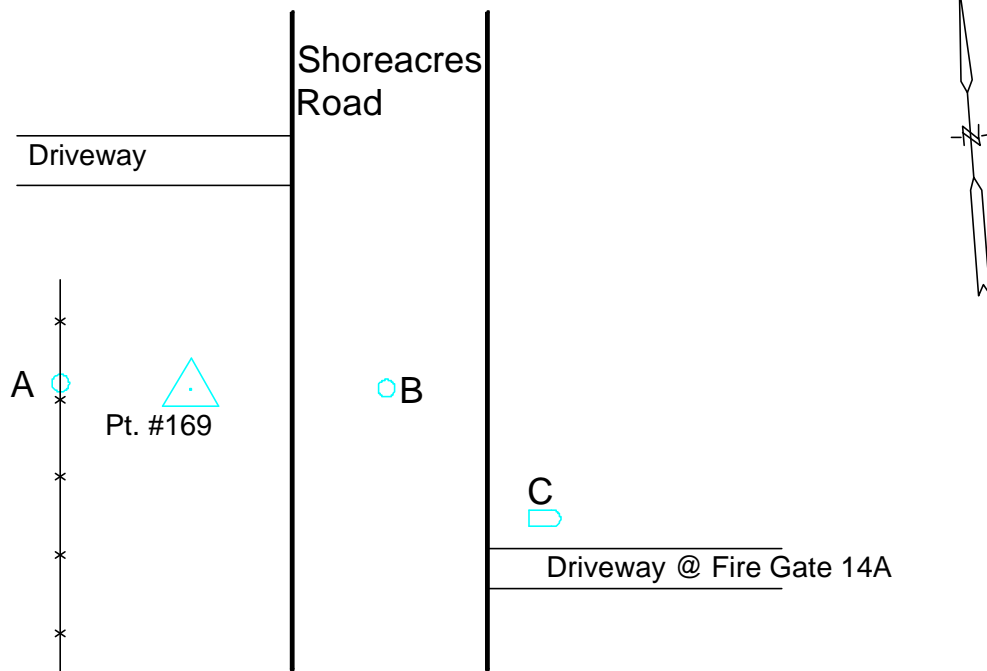




Photo Science, Inc.

# CONTROL REFERENCE SUMMARY

<b>Project Name:</b> Woodford County GIS		<b>Agency:</b> VMWC Planning	
<b>Quad Sheet:</b> Frankfort East	<b>County:</b> Woodford	<b>State:</b> KY	<b>Date Set:</b> 10/1/2004
<b>Station:</b> 169 AZ	<b>Type of Mark:</b> Concrete Monument	<b>Stamping on Mark:</b> 169 AZ	<b>Established By:</b> Photo Science, Inc.
<b>Elev (USFeet)</b> 504.99	<b>Elev (M):</b> 153.921	<b>Datum:</b> NAVD88	
<b>Northing (USFeet)</b> 231,146.60	<b>Easting (USFeet)</b> 1,463,658.59	<b>Datum:</b> KY North	
<b>Northing (M)</b> 70,453.625	<b>Easting (M)</b> 446,124.030	<b>Datum:</b> KY North	
<b>Latitude:</b> 38°07'59.22594"N	<b>Longitude:</b> 84°51'52.28882"W	<b>Datum:</b> NAD83	
<b>Ahead Station:</b> 169	<b>Ahead Azimuth:</b> 03° 53' 36 "	<b>Ahead Distance:</b> 609.31	
<b>Back Station:</b>	<b>Back Azimuth:</b> ° ' "	<b>Back Distance:</b>	
<b>Data Entry:</b> GB	<b>Checked By:</b> MEM	<b>Date:</b> 11/30/2004	

- A: 9.8' TO CENTER OF SHOREACRES ROAD
- B: 9.6' TO MAILBOX @ 1515
- C: 18.2' TO A CARSONITE POST @ FIRE GATE 20

## Point #169 AZ

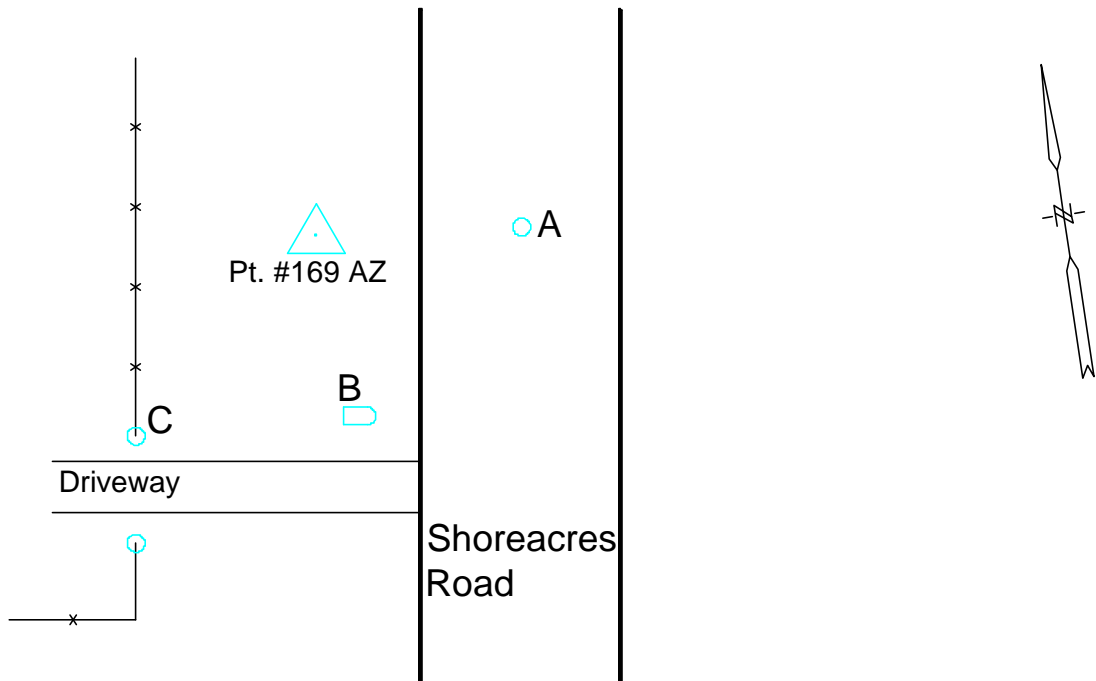






Photo Science, Inc.

# CONTROL REFERENCE SUMMARY

<b>Project Name:</b> Woodford County GIS		<b>Agency:</b> VMWC Planning	
<b>Quad Sheet:</b> Frankfort East	<b>County:</b> Woodford	<b>State:</b> KY	<b>Date Set:</b> 10/1/2004
<b>Station:</b> 170	<b>Type of Mark:</b> Concrete Monument	<b>Stamping on Mark:</b> 170	<b>Established By:</b> Photo Science, Inc.
<b>Elev (USFeet)</b> 547.83	<b>Elev (M):</b> 166.979	<b>Datum:</b> NAVD88	
<b>Northing (USFeet)</b> 235,727.71	<b>Easting (USFeet)</b> 1,473,002.55	<b>Datum:</b> KY North	
<b>Northing (M)</b> 71,849.950	<b>Easting (M)</b> 448,972.075	<b>Datum:</b> KY North	
<b>Latitude:</b> 38°08'45.11251"N	<b>Longitude:</b> 84°49'55.70623"W	<b>Datum:</b> NAD83	
<b>Ahead Station:</b>	<b>Ahead Azimuth:</b> °   '   "	<b>Ahead Distance:</b>	
<b>Back Station:</b> 170 AZ	<b>Back Azimuth:</b> 354 ° 32 ' 11 "	<b>Back Distance:</b> 881.70	
<b>Data Entry:</b> GB	<b>Checked By:</b> MEM	<b>Date:</b> 11/30/2004	

A: 14.3' TO CENTER OF HWY 1659

B: 33.4' TO END OF 12" DRAIN UNDER DRIVEWAY

C: 99.1' TO CORNER OF STONE WALL

## Point #170

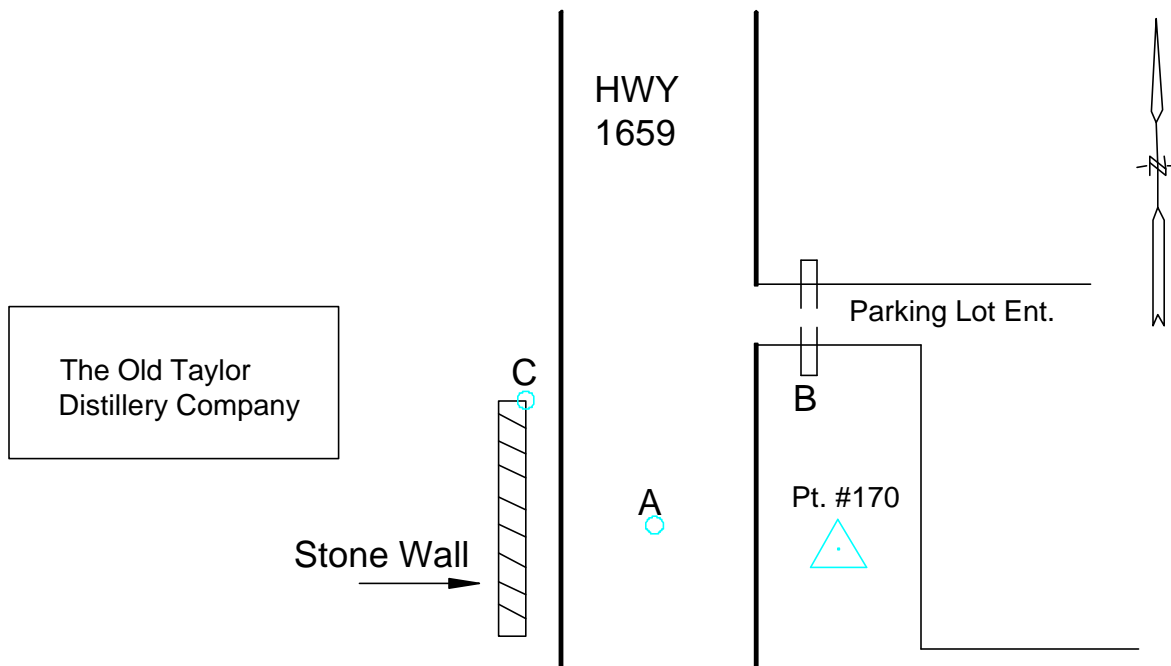




Photo Science, Inc.

# CONTROL REFERENCE SUMMARY

<b>Project Name:</b> Woodford County GIS		<b>Agency:</b> VMWC Planning	
<b>Quad Sheet:</b> Frankfort East	<b>County:</b> Woodford	<b>State:</b> KY	<b>Date Set:</b> 10/1/2004
<b>Station:</b> 170 AZ	<b>Type of Mark:</b> Concrete Monument	<b>Stamping on Mark:</b> 170 AZ	<b>Established By:</b> Photo Science, Inc.
<b>Elev (USFeet)</b> 539.28	<b>Elev (M):</b> 164.373	<b>Datum:</b> NAVD88	
<b>Northing (USFeet)</b> 236,605.40	<b>Easting (USFeet)</b> 1,472,918.60	<b>Datum:</b> KY North	
<b>Northing (M)</b> 72,117.470	<b>Easting (M)</b> 448,946.487	<b>Datum:</b> KY North	
<b>Latitude:</b> 38°08'53.78376"N	<b>Longitude:</b> 84°49'56.82658"W	<b>Datum:</b> NAD83	
<b>Ahead Station:</b> 170	<b>Ahead Azimuth:</b> 174 ° 32' 11 "	<b>Ahead Distance:</b> 881.7	
<b>Back Station:</b>	<b>Back Azimuth:</b> ° ' "	<b>Back Distance:</b>	
<b>Data Entry:</b> GB	<b>Checked By:</b> MEM	<b>Date:</b> 11/30/2004	

- A: 1.1' TO FACE OF STONE WALL
- B: 11.0' TO FENCE POST @ END OF WALL
- C: 12.3' TO CENTER OF HWY 1659

## Point #170 AZ

