



Photo Science, Inc.

CONTROL REFERENCE SUMMARY

Project Name: Woodford County GIS		Agency: VMWC Planning	
Quad Sheet: Salvisa	County: Woodford	State: KY	Date Set: 10/1/2004
Station: 161	Type of Mark: Concrete Monument	Stamping on Mark: 161	Established By: Photo Science, Inc.
Elev (USFeet) 867.70	Elev (M): 264.475	Datum: NAVD88	
Northing (USFeet) 181,807.27	Easting (USFeet) 1,491,322.71	Datum: KY North	
Northing (M) 55,414.967	Easting (M) 454,556.071	Datum: KY North	
Latitude: 37°59'53.15876"N	Longitude: 84°46'02.58623"W	Datum: NAD83	
Ahead Station:	Ahead Azimuth: ° ' "	Ahead Distance:	
Back Station: 161 AZ	Back Azimuth: 13 ° 43 ' 43 "	Back Distance: 590.17	
Data Entry: GB	Checked By: MEM	Date: 11/30/2004	

- A: 25.3' TO A POWER POLE
- B: 52.0' TO FIRE GATE # 111
- C: 5.0' TO THE FENCE

Point #161

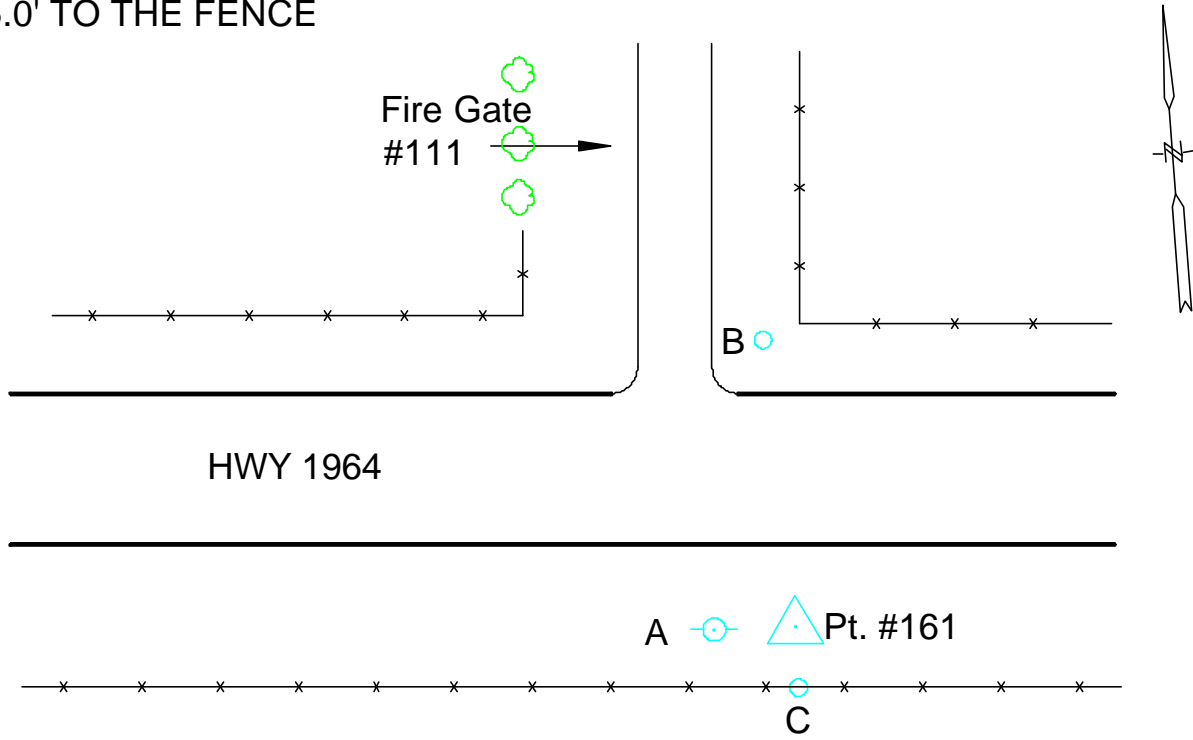




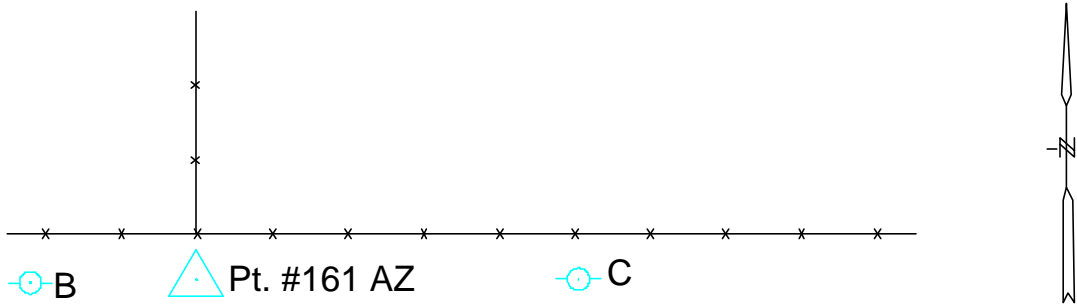
Photo Science, Inc.

CONTROL REFERENCE SUMMARY

Project Name: Woodford County GIS		Agency: VMWC Planning	
Quad Sheet: Salvisa	County: Woodford	State: KY	Date Set: 10/1/2004
Station: 161 AZ	Type of Mark: Concrete Monument	Stamping on Mark: 161 AZ	Established By: Photo Science, Inc.
Elev (USFeet) 877.13	Elev (M): 267.350	Datum: NAVD88	
Northing (USFeet) 182,380.58	Easting (USFeet) 1,491,462.77	Datum: KY North	
Northing (M) 55,589.712	Easting (M) 454,598.761	Datum: KY North	
Latitude: 37°59'58.83399"N	Longitude: 84°46'00.87677"W	Datum: NAD83	
Ahead Station: 161	Ahead Azimuth: 193 ° 43' 43 "	Ahead Distance: 590.17	
Back Station:	Back Azimuth: ° ' "	Back Distance:	
Data Entry: GB	Checked By: MEM	Date: 11/30/2004	

- A: 34.3' TO MAILBOX @ 4290
- B: 44.5' TO A POWER POLE
- C: 52.7' TO A POWER POLE

Point #161 AZ



HWY 1964

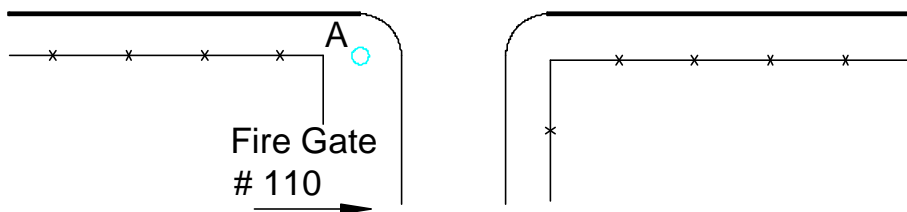




Photo Science, Inc.

CONTROL REFERENCE SUMMARY

Project Name: Woodford County GIS		Agency: VMWC Planning	
Quad Sheet: Tyrone	County: Woodford	State: KY	Date Set: 10/1/2004
Station: 162	Type of Mark: Concrete Monument	Stamping on Mark: 162	Established By: Photo Science, Inc.
Elev (USFeet) 873.53	Elev (M): 266.252	Datum: NAVD88	
Northing (USFeet) 191,245.41	Easting (USFeet) 1,493,093.64	Datum: KY North	
Northing (M) 58,291.718	Easting (M) 455,095.852	Datum: KY North	
Latitude: 38°01'26.55847"N	Longitude: 84°45'41.11768"W	Datum: NAD83	
Ahead Station:	Ahead Azimuth: ° ' "	Ahead Distance:	
Back Station: 162 AZ	Back Azimuth: 49 ° 18 ' 06 "	Back Distance: 790.55	
Data Entry: GB	Checked By: MEM	Date: 11/30/2004	

- A: 23.3' TO CENTER OF HWY 1964
- B: 25.4' TO A TELEPHONE POLE
- C: 5.7' TO A PLANK FENCE

Point #162

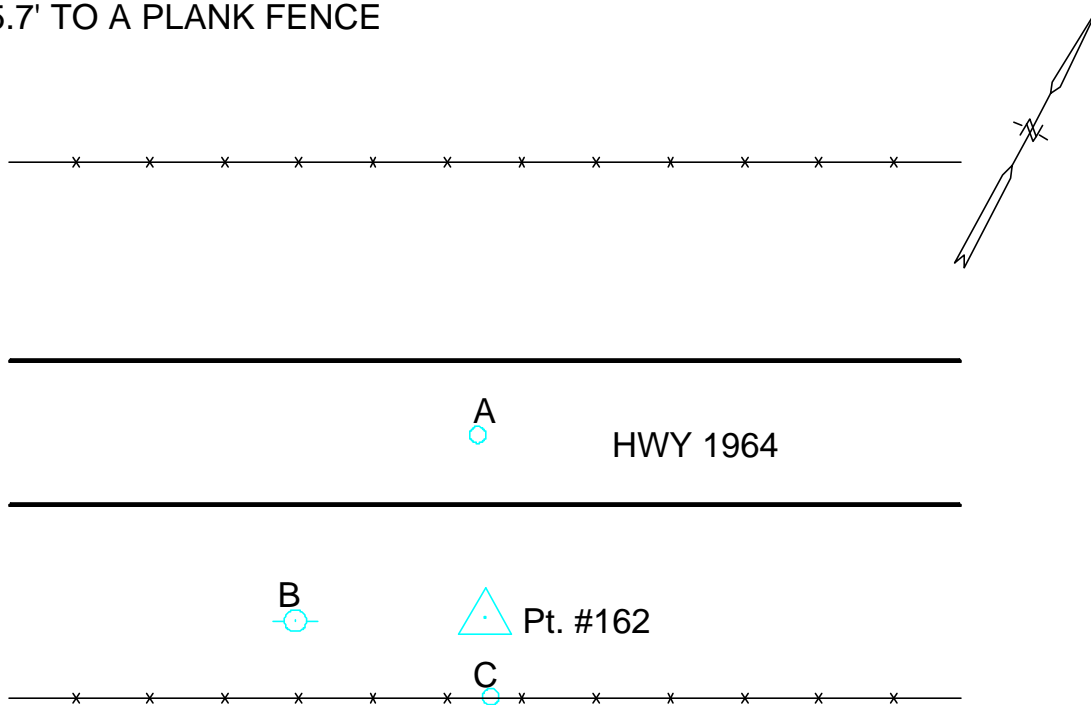




Photo Science, Inc.

CONTROL REFERENCE SUMMARY

Project Name: Woodford County GIS		Agency: VMWC Planning	
Quad Sheet: Tyrone	County: Woodford	State: KY	Date Set: 10/1/2004
Station: 162 AZ	Type of Mark: Concrete Monument	Stamping on Mark: 162 AZ	Established By: Photo Science, Inc.
Elev (USFeet) 858.68	Elev (M): 261.726	Datum: NAVD88	
Northing (USFeet) 191,760.91	Easting (USFeet) 1,493,693.00	Datum: KY North	
Northing (M) 58,448.842	Easting (M) 455,278.537	Datum: KY North	
Latitude: 38°01'31.68730"N	Longitude: 84°45'33.66324"W	Datum: NAD83	
Ahead Station: 162	Ahead Azimuth: 229 ° 18' 06 "	Ahead Distance: 790.55	
Back Station:	Back Azimuth: ° ' "	Back Distance:	
Data Entry: GB	Checked By: MEM	Date: 11/30/2004	

- A: 6.1' TO A TELEPHONE POLE
- B: 60.2' TO A POWER POLE
- C: 26.7' TO "ROCKY HILLS LANE" SIGN

Point #162 AZ



HWY 1964

Pt. #162 AZ



C

A

B

Rocky Hills Lane





Photo Science, Inc.

CONTROL REFERENCE SUMMARY

Project Name: Woodford County GIS		Agency: VMWC Planning	
Quad Sheet: Tyrone	County: Woodford	State: KY	Date Set: 10/1/2004
Station: 163	Type of Mark: Concrete Monument	Stamping on Mark: 163	Established By: Photo Science, Inc.
Elev (USFeet) 837.03	Elev (M): 255.127	Datum: NAVD88	
Northing (USFeet) 205,807.23	Easting (USFeet) 1,489,035.67	Datum: KY North	
Northing (M) 62,730.169	Easting (M) 453,858.980	Datum: KY North	
Latitude: 38°03'50.28507"N	Longitude: 84°46'32.86855"W	Datum: NAD83	
Ahead Station:	Ahead Azimuth: ° ' "	Ahead Distance:	
Back Station: 163 AZ	Back Azimuth: 302 ° 31 ' 58 "	Back Distance: 915.02	
Data Entry: GB	Checked By: MEM	Date: 11/30/2004	

- A: 7.3' TO A CARSONITE POST @ FENCE
- B: 18.2' TO CENTER OF HWY 1964
- C: 32.3' TO FENCE POST @ BEGINNING OF RADIUS

Point #163

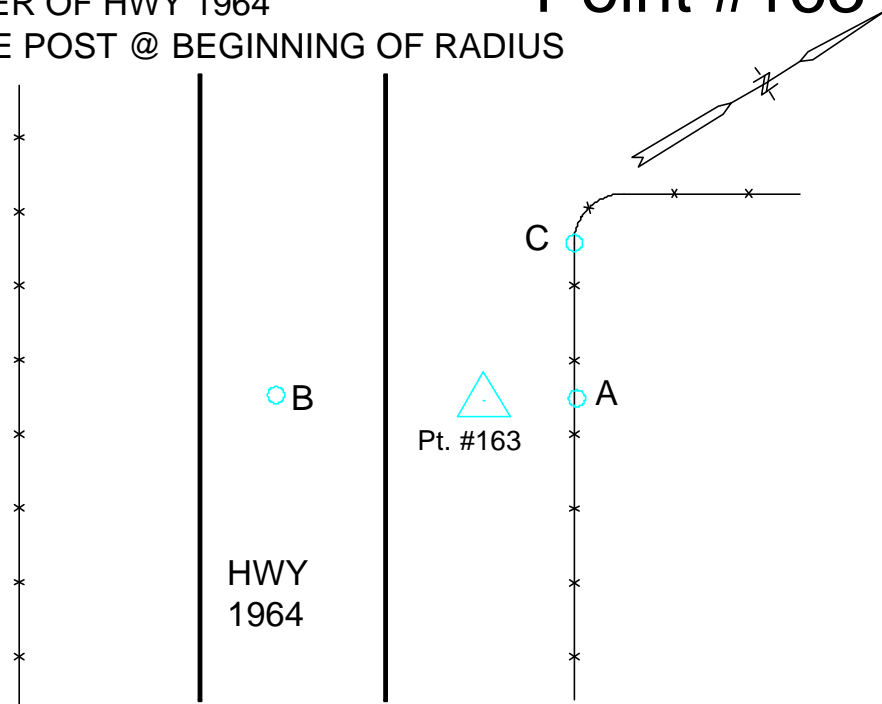




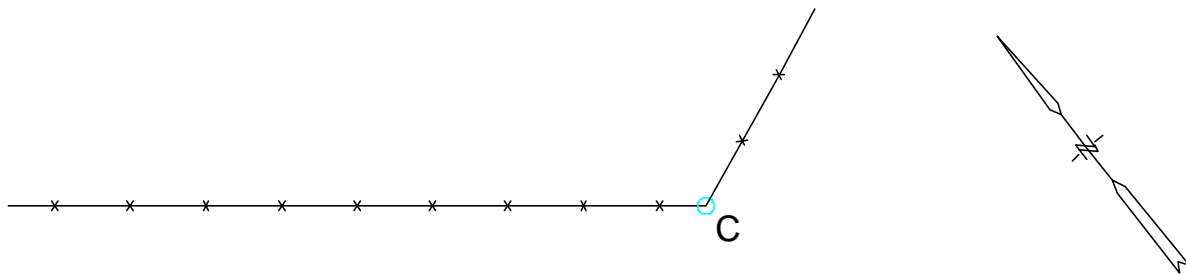
Photo Science, Inc.

CONTROL REFERENCE SUMMARY

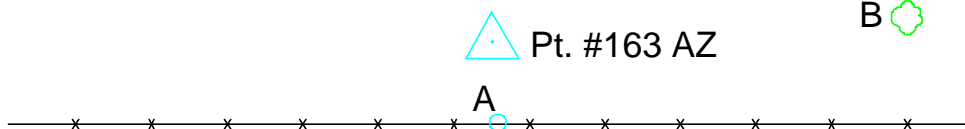
Project Name: Woodford County GIS		Agency: VMWC Planning	
Quad Sheet: Tyrone	County: Woodford	State: KY	Date Set: 10/1/2004
Station: 163 AZ	Type of Mark: Concrete Monument	Stamping on Mark: 163 AZ	Established By: Photo Science, Inc.
Elev (USFeet) 862.53	Elev (M): 262.900	Datum: NAVD88	
Northing (USFeet) 206,299.31	Easting (USFeet) 1,488,264.23	Datum: KY North	
Northing (M) 62,880.155	Easting (M) 453,623.845	Datum: KY North	
Latitude: 38°03'55.10597"N	Longitude: 84°46'42.54969"W	Datum: NAD83	
Ahead Station: 163	Ahead Azimuth: 122 ° 31' 58 "	Ahead Distance: 915.02	
Back Station:	Back Azimuth: ° ' "	Back Distance:	
Data Entry: GB	Checked By: MEM	Date: 11/30/2004	

- A: 12.1' TO A CARSONITE POST @ FENCE
- B: 88.6' TO A 20" LOCUST TREE
- C: 87.0' TO CORNER FENCE POST

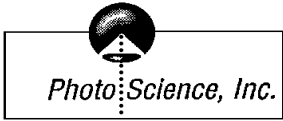
Point #163 AZ



Clifton Road - HWY 1964



Pt. #163 AZ



CONTROL REFERENCE SUMMARY

Project Name: Woodford County GIS		Agency: VMWC Planning	
Quad Sheet: Tyrone	County: Woodford	State: KY	Date Set: 10/1/2004
Station: 164	Type of Mark: Concrete Monument	Stamping on Mark: 164	Established By: Photo Science, Inc.
Elev (USFeet) 802.72	Elev (M): 244.670	Datum: NAVD88	
Northing (USFeet) 210,844.54	Easting (USFeet) 1,480,108.29	Datum: KY North	
Northing (M) 64,265.544	Easting (M) 451,137.909	Datum: KY North	
Latitude: 38°04'39.56320"N	Longitude: 84°48'24.87473"W	Datum: NAD83	
Ahead Station:	Ahead Azimuth: ° ' "	Ahead Distance:	
Back Station: 164 AZ	Back Azimuth: 29 ° 03 ' 27 "	Back Distance: 817.65	
Data Entry: GB	Checked By: MEM	Date: 11/30/2004	

- A: 3.7' TO A CARSONITE POST @ FENCE
- B: 43.4' TO A 14" CEDAR TREE
- C: 46.3' TO A 18" HACKBERRY TREE

Point #164

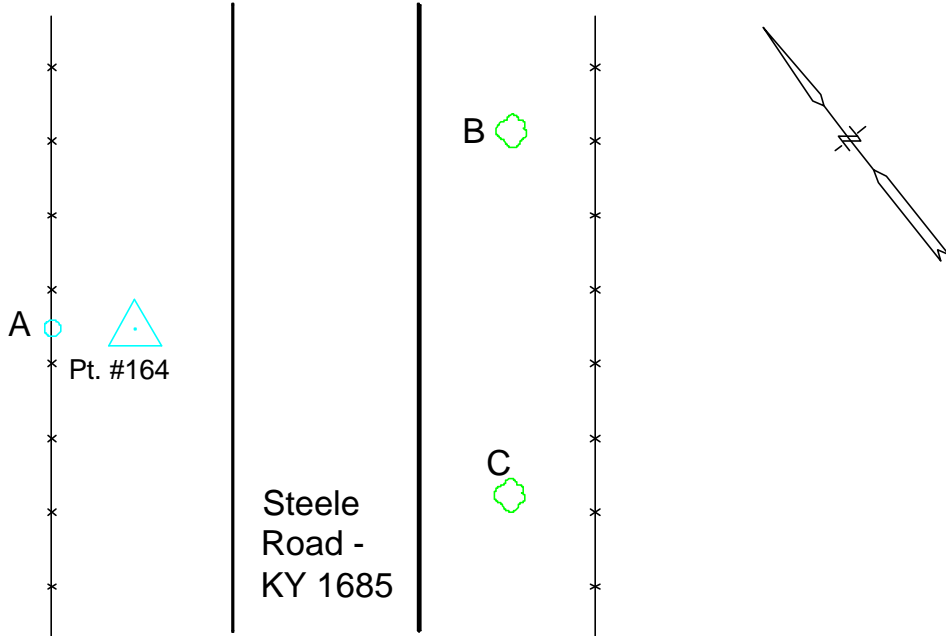




Photo Science, Inc.

CONTROL REFERENCE SUMMARY

Project Name: Woodford County GIS		Agency: VMWC Planning	
Quad Sheet: Tyrone	County: Woodford	State: KY	Date Set: 10/1/2004
Station: 164 AZ	Type of Mark: Concrete Monument	Stamping on Mark: 164 AZ	Established By: Photo Science, Inc.
Elev (USFeet) 839.01	Elev (M): 255.731	Datum: NAVD88	
Northing (USFeet) 211,559.27	Easting (USFeet) 1,480,505.41	Datum: KY North	
Northing (M) 64,483.394	Easting (M) 451,258.951	Datum: KY North	
Latitude: 38°04'46.65244"N	Longitude: 84°48'19.96225"W	Datum: NAD83	
Ahead Station: 164	Ahead Azimuth: 209 ° 03' 27 "	Ahead Distance: 817.65	
Back Station:	Back Azimuth: ° ' "	Back Distance:	
Data Entry: GB	Checked By: MEM	Date: 11/30/2004	

- A: 7.0' TO A CARSONITE POST @ FENCE
- B: 5.7' TO A CORNER FENCE POST
- C: 78.5' TO A UTILITY POLE

Point #164 AZ

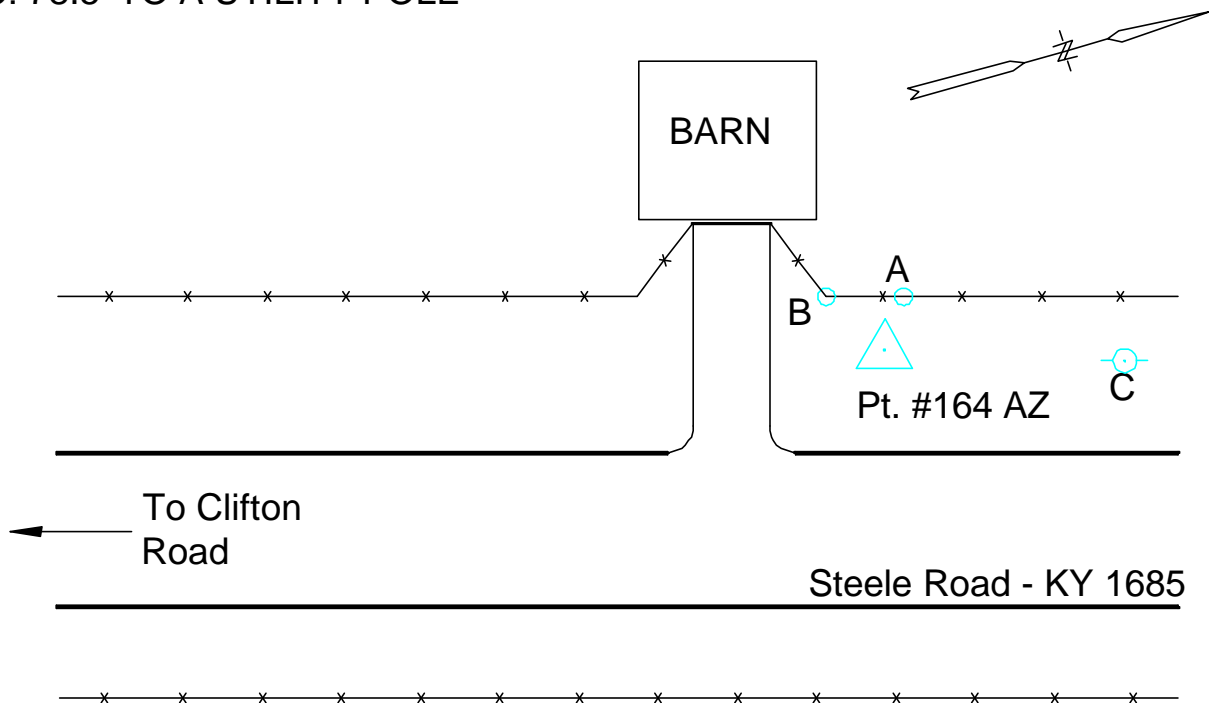




Photo Science, Inc.

CONTROL REFERENCE SUMMARY

Project Name: Woodford County GIS		Agency: VMWC Planning	
Quad Sheet: Tyrone	County: Woodford	State: KY	Date Set: 10/1/2004
Station: 165	Type of Mark: Concrete Monument	Stamping on Mark: 165	Established By: Photo Science, Inc.
Elev (USFeet) 795.06	Elev (M): 242.335	Datum: NAVD88	
Northing (USFeet) 216,735.36	Easting (USFeet) 1,479,922.69	Datum: KY North	
Northing (M) 66,061.070	Easting (M) 451,081.338	Datum: KY North	
Latitude: 38°05'37.78623"N	Longitude: 84°48'27.64194"W	Datum: NAD83	
Ahead Station:	Ahead Azimuth: ° ' "	Ahead Distance:	
Back Station: 165 AZ	Back Azimuth: 285 ° 56 ' 52 "	Back Distance: 943.48	
Data Entry: GB	Checked By: MEM	Date: 11/30/2004	

- A: 16.5' TO A CARSONITE POST @ FENCE
- B: 37.7' TO A MAILBOX POST
- C: 47.0' TO THE WEST GATE POST

Point #165



Rose Lane

0.58 miles To
Steele Road →

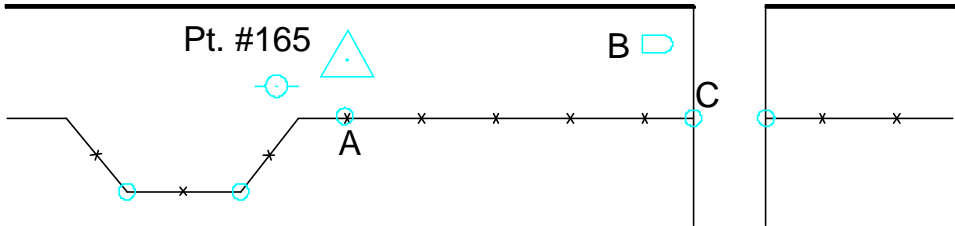




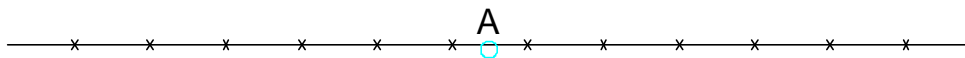
Photo Science, Inc.

CONTROL REFERENCE SUMMARY

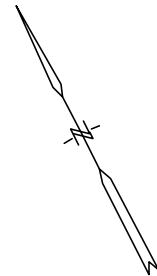
Project Name: Woodford County GIS		Agency: VMWC Planning	
Quad Sheet: Tyrone	County: Woodford	State: KY	Date Set: 10/1/2004
Station: 165 AZ	Type of Mark: Concrete Monument	Stamping on Mark: 165 AZ	Established By: Photo Science, Inc.
Elev (USFeet) 830.71	Elev (M): 253.201	Datum: NAVD88	
Northing (USFeet) 216,994.59	Easting (USFeet) 1,479,015.52	Datum: KY North	
Northing (M) 66,140.083	Easting (M) 450,804.832	Datum: KY North	
Latitude: 38°05'40.29440"N	Longitude: 84°48'39.00932"W	Datum: NAD83	
Ahead Station: 165	Ahead Azimuth: 105 ° 56' 52 "	Ahead Distance: 943.48	
Back Station:	Back Azimuth: ° ' "	Back Distance:	
Data Entry: GB	Checked By: MEM	Date: 11/30/2004	

- A: 6.6' TO A CARSONITE POST @ FENCE
- B: 42.1' TO A 4" MAPLE TREE
- C: 35.6' TO A POWER POLE

Point #165 AZ



Pt. #165 AZ



Rose Lane

0.75 miles To
Steele Road →

