



Photo Science, Inc.

CONTROL REFERENCE SUMMARY

Project Name: Woodford County GIS		Agency: VMWC Planning	
Quad Sheet: Keene	County: Woodford	State: KY	Date Set: 10/1/2004
Station: 156	Type of Mark: Concrete Monument	Stamping on Mark: 156	Established By: Photo Science, Inc.
Elev (USFeet) 871.66	Elev (M): 265.682	Datum: NAVD88	
Northing (USFeet) 177,903.89	Easting (USFeet) 1,502,748.99	Datum: KY North	
Northing (M) 54,225.214	Easting (M) 458,038.808	Datum: KY North	
Latitude: 37°59'15.18140"N	Longitude: 84°43'39.59090"W	Datum: NAD83	
Ahead Station:	Ahead Azimuth: ° ' "	Ahead Distance:	
Back Station: 156 AZ	Back Azimuth: 142 ° 51 ' 53 "	Back Distance: 1,468.15	
Data Entry: GB	Checked By: MEM	Date: 11/30/2004	

- A: 10.9' TO FENCE
- B: 32.3' TO A 5" OAK TREE
- C: 13.5' TO CENTER OF HWY 33

Point #156

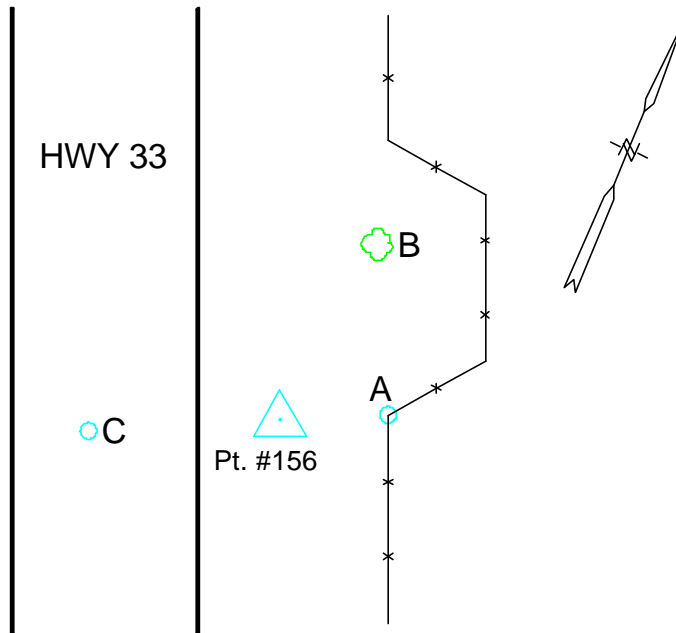




Photo Science, Inc.

CONTROL REFERENCE SUMMARY

Project Name: Woodford County GIS		Agency: VMWC Planning	
Quad Sheet: Keene	County: Woodford	State: KY	Date Set: 10/1/2004
Station: 156 AZ	Type of Mark: Concrete Monument	Stamping on Mark: 156 AZ	Established By: Photo Science, Inc.
Elev (USFeet) 861.78	Elev (M): 262.671	Datum: NAVD88	
Northing (USFeet) 176,733.46	Easting (USFeet) 1,503,635.31	Datum: KY North	
Northing (M) 53,868.466	Easting (M) 458,308.959	Datum: KY North	
Latitude: 37°59'03.65625"N	Longitude: 84°43'28.44495"W	Datum: NAD83	
Ahead Station: 156	Ahead Azimuth: 322 ° 51' 53 "	Ahead Distance: 1468.15	
Back Station:	Back Azimuth: ° ' "	Back Distance:	
Data Entry: GB	Checked By: MEM	Date: 11/30/2004	

- A: 2.0' TO FENCE
- B: 47.0' TO SOUTH END OF 15" RCP
- C: 15.6' TO CENTER OF HWY 33

Point #156 AZ

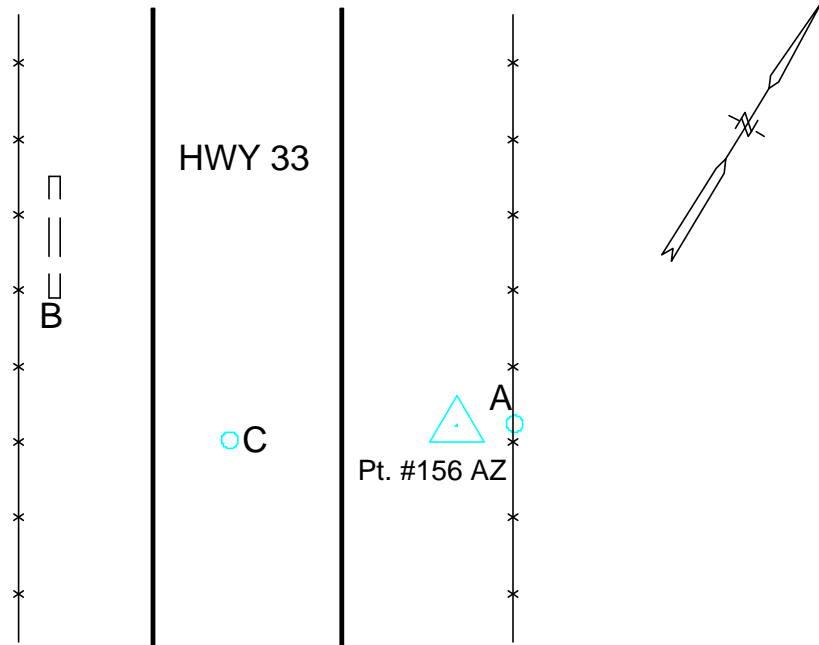




Photo Science, Inc.

CONTROL REFERENCE SUMMARY

Project Name: Woodford County GIS		Agency: VMWC Planning	
Quad Sheet: Keene	County: Woodford	State: KY	Date Set: 10/1/2004
Station: 157	Type of Mark: Concrete Monument	Stamping on Mark: 157	Established By: Photo Science, Inc.
Elev (USFeet) 893.89	Elev (M): 272.458	Datum: NAVD88	
Northing (USFeet) 181,410.30	Easting (USFeet) 1,503,442.69	Datum: KY North	
Northing (M) 55,293.970	Easting (M) 458,250.248	Datum: KY North	
Latitude: 37°59'49.88014"N	Longitude: 84°43'31.15215"W	Datum: NAD83	
Ahead Station:	Ahead Azimuth: ° ' "	Ahead Distance:	
Back Station: 157 AZ	Back Azimuth: 22 ° 58 ' 10 "	Back Distance: 1,075.04	
Data Entry: GB	Checked By: MEM	Date: 11/30/2004	

- A: 15.6' TO CENTER OF HWY 33
- B: 34.4' TO CENTER OF DRIVE
- C: 43.0' TO CORNER FENCE POST

Point #157

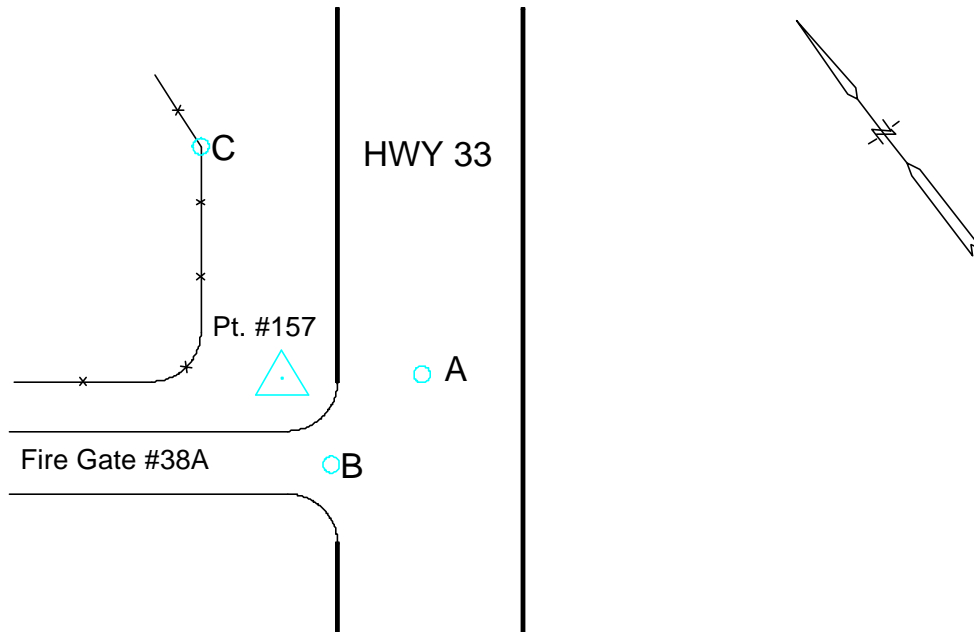




Photo Science, Inc.

CONTROL REFERENCE SUMMARY

Project Name: Woodford County GIS		Agency: VMWC Planning	
Quad Sheet: Keene	County: Woodford	State: KY	Date Set: 10/1/2004
Station: 157 AZ	Type of Mark: Concrete Monument	Stamping on Mark: 157 AZ	Established By: Photo Science, Inc.
Elev (USFeet) 918.36	Elev (M): 279.917	Datum: NAVD88	
Northing (USFeet) 182,400.10	Easting (USFeet) 1,503,862.21	Datum: KY North	
Northing (M) 55,595.662	Easting (M) 458,378.118	Datum: KY North	
Latitude: 37°59'59.68628"N	Longitude: 84°43'25.97499"W	Datum: NAD83	
Ahead Station: 157	Ahead Azimuth: 202 ° 58' 10 "	Ahead Distance: 1075.04	
Back Station:	Back Azimuth: ° ' "	Back Distance:	
Data Entry: GB	Checked By: MEM	Date: 11/30/2004	

- A: 66.8' TO A POWER POLE
- B: 13.4' TO CENTER OF HWY 33
- C: 102.0' TO PARKING LOT LIGHT

Point #157 AZ

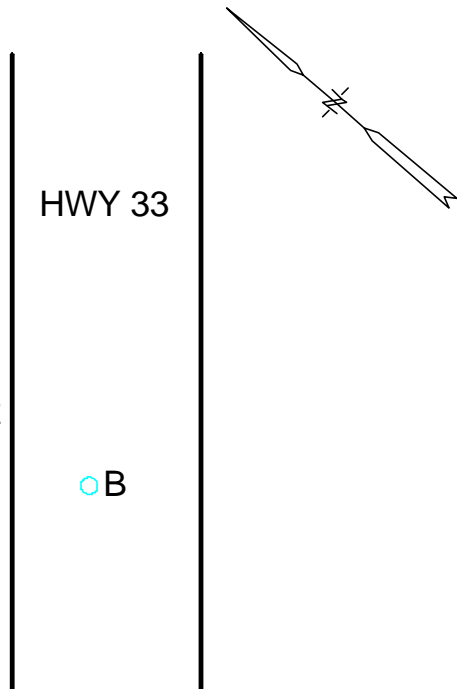
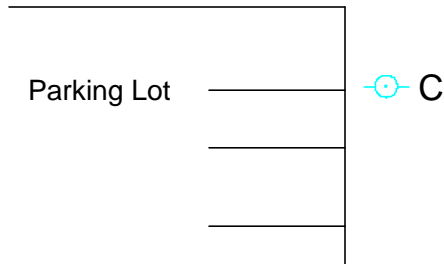
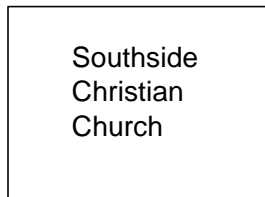




Photo Science, Inc.

CONTROL REFERENCE SUMMARY

Project Name: Woodford County GIS		Agency: VMWC Planning	
Quad Sheet: Keene	County: Woodford	State: KY	Date Set: 10/1/2004
Station: 158	Type of Mark: Concrete Monument	Stamping on Mark: 158	Established By: Photo Science, Inc.
Elev (USFeet) 874.33	Elev (M): 266.496	Datum: NAVD88	
Northing (USFeet) 178,979.61	Easting (USFeet) 1,496,938.79	Datum: KY North	
Northing (M) 54,553.094	Easting (M) 456,267.856	Datum: KY North	
Latitude: 37°59'25.51146"N	Longitude: 84°44'52.23678"W	Datum: NAD83	
Ahead Station:	Ahead Azimuth: ° ' "	Ahead Distance:	
Back Station: 158 AZ	Back Azimuth: 223 ° 59 ' 44 "	Back Distance: 763.24	
Data Entry: GB	Checked By: MEM	Date: 11/30/2004	

- A: 17.0' TO CENTER OF CARPENTER PIKE
- B: 48.6' TO A TELEPHONE POLE
- C: 68.0' TO A TELEPHONE POLE

Point #158

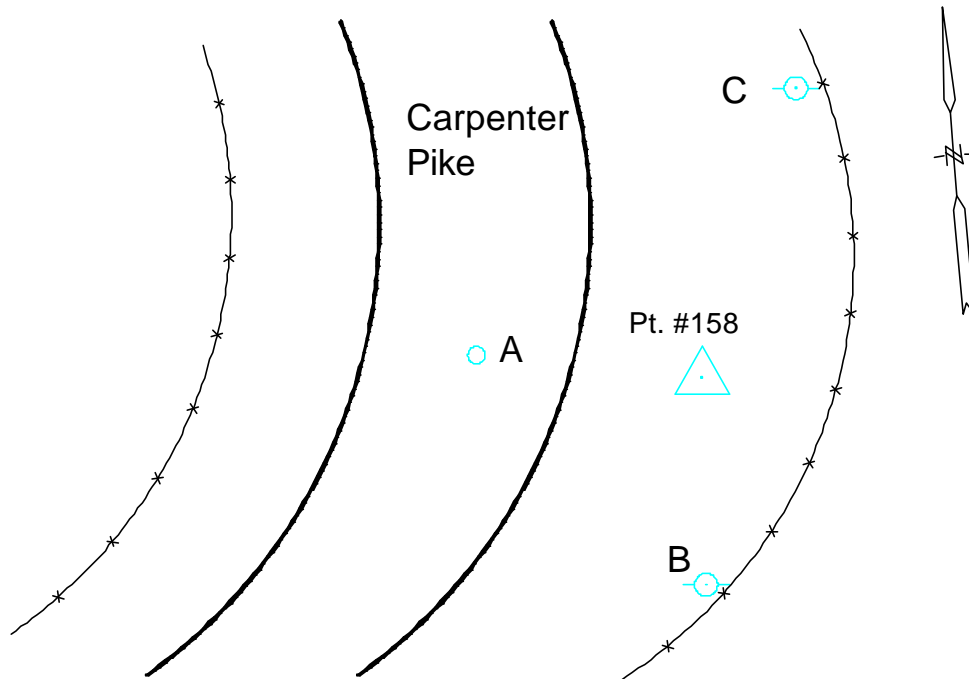




Photo Science, Inc.

CONTROL REFERENCE SUMMARY

Project Name: Woodford County GIS		Agency: VMWC Planning	
Quad Sheet: Keene	County: Woodford	State: KY	Date Set: 10/1/2004
Station: 158 AZ	Type of Mark: Concrete Monument	Stamping on Mark: 158 AZ	Established By: Photo Science, Inc.
Elev (USFeet) 854.92	Elev (M): 260.580	Datum: NAVD88	
Northing (USFeet) 178,430.54	Easting (USFeet) 1,496,408.64	Datum: KY North	
Northing (M) 54,385.737	Easting (M) 456,106.266	Datum: KY North	
Latitude: 37°59'20.05515"N	Longitude: 84°44'58.82169"W	Datum: NAD83	
Ahead Station: 158	Ahead Azimuth: 43 ° 59' 44 "	Ahead Distance: 763.24	
Back Station:	Back Azimuth: ° ' "	Back Distance:	
Data Entry: GB	Checked By: MEM	Date: 11/30/2004	

- A: 13.2' TO CENTER OF CARPENTER PIKE
- B: 30.1' TO END OF ENTRANCE WALL
- C: 39.0' TO MAILBOX @ 50 CARPENTER PIKE

Point #158 AZ

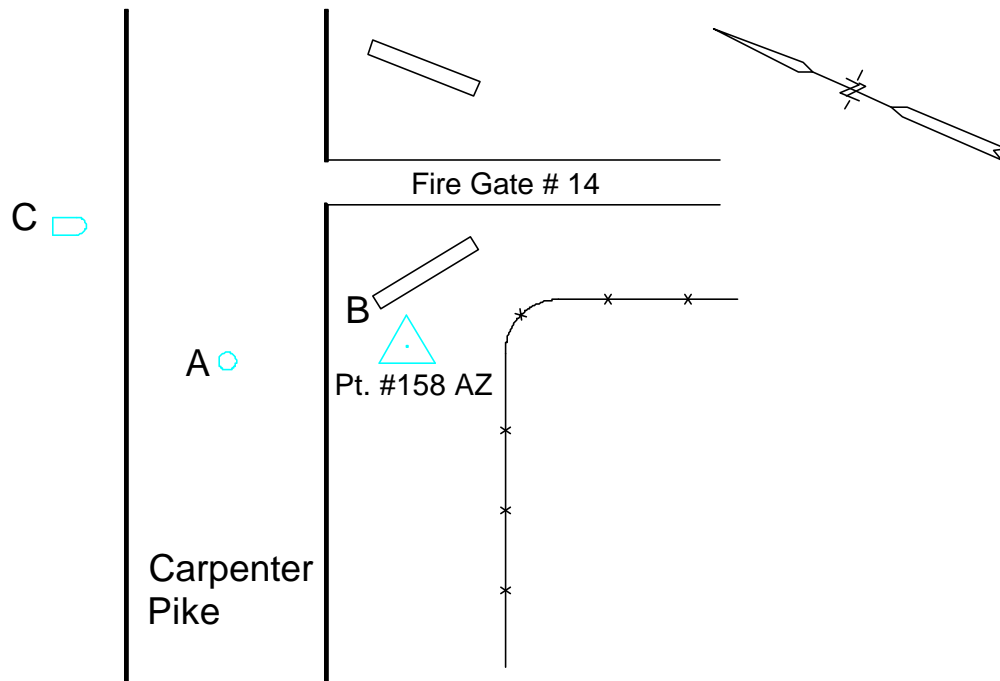




Photo Science, Inc.

CONTROL REFERENCE SUMMARY

Project Name: Woodford County GIS		Agency: VMWC Planning	
Quad Sheet: Keene	County: Woodford	State: KY	Date Set: 10/1/2004
Station: 159	Type of Mark: Concrete Monument	Stamping on Mark: 159	Established By: Photo Science, Inc.
Elev (USFeet) 798.99	Elev (M): 243.533	Datum: NAVD88	
Northing (USFeet) 165,479.29	Easting (USFeet) 1,496,950.66	Datum: KY North	
Northing (M) 50,438.188	Easting (M) 456,271.474	Datum: KY North	
Latitude: 37°57'12.05266"N	Longitude: 84°44'51.17743"W	Datum: NAD83	
Ahead Station:	Ahead Azimuth: ° ' "	Ahead Distance:	
Back Station: 159 AZ	Back Azimuth: 286 ° 12 ' 50 "	Back Distance: 629.07	
Data Entry: GB	Checked By: MEM	Date: 11/30/2004	

- A: 23.7' TO CARSONITE POST @ FENCE
- B: 30.1' TO A TELEPHONE POLE
- C: 46.5' TO A POWER POLE

Point #159

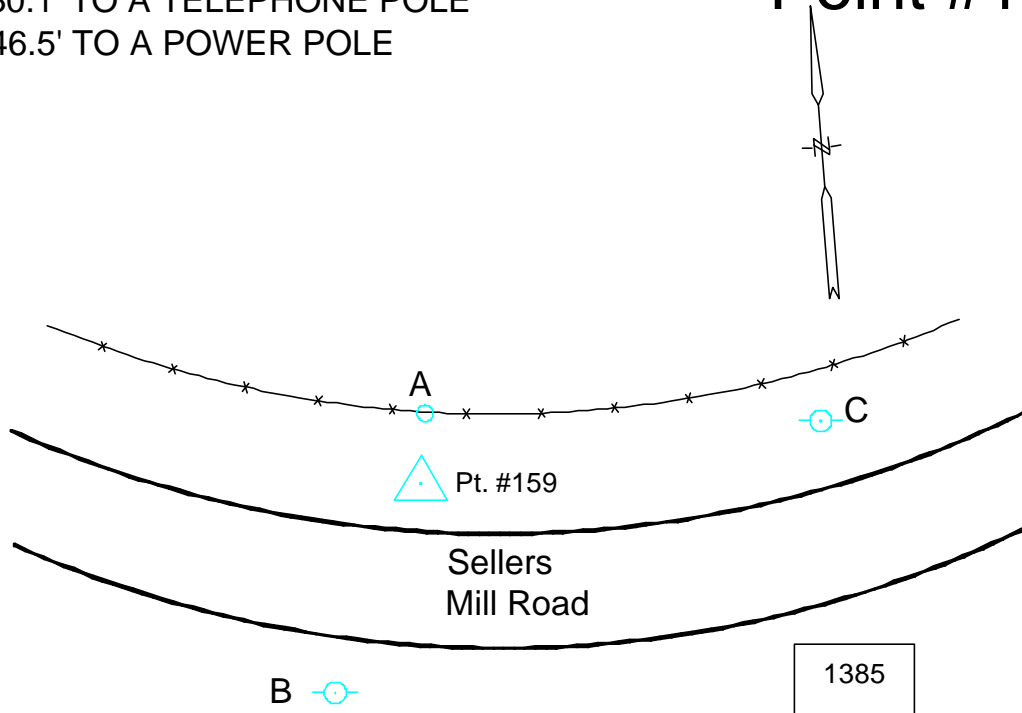




Photo Science, Inc.

CONTROL REFERENCE SUMMARY

Project Name: Woodford County GIS		Agency: VMWC Planning	
Quad Sheet: Keene	County: Woodford	State: KY	Date Set: 10/1/2004
Station: 159 AZ	Type of Mark: Concrete Monument	Stamping on Mark: 159 AZ	Established By: Photo Science, Inc.
Elev (USFeet) 770.07	Elev (M): 234.718	Datum: NAVD88	
Northing (USFeet) 165,654.94	Easting (USFeet) 1,496,346.61	Datum: KY North	
Northing (M) 50,491.727	Easting (M) 456,087.359	Datum: KY North	
Latitude: 37°57'13.75679"N	Longitude: 84°44'58.73085"W	Datum: NAD83	
Ahead Station: 159	Ahead Azimuth: 106° 12' 50 "	Ahead Distance: 629.07	
Back Station:	Back Azimuth: ° ' "	Back Distance:	
Data Entry: GB	Checked By: MEM	Date: 11/30/2004	

A: 8.6' TO A CARSONITE POST @ FENCE
 B: 11.7' TO CENTER OF SELLERS MILL ROAD
 C: 49.4' TO MAILBOX @ 1263

Point #159 AZ

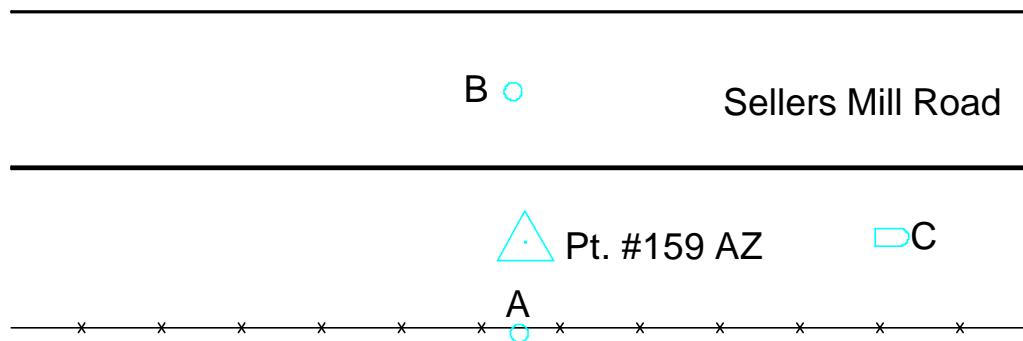
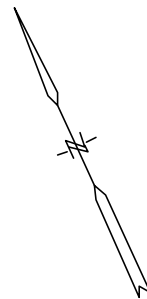




Photo Science, Inc.

CONTROL REFERENCE SUMMARY

Project Name: Woodford County GIS		Agency: VMWC Planning	
Quad Sheet: Salvisa	County: Woodford	State: KY	Date Set: 10/1/2004
Station: 160	Type of Mark: Concrete Monument	Stamping on Mark: 160	Established By: Photo Science, Inc.
Elev (USFeet) 850.51	Elev (M): 259.236	Datum: NAVD88	
Northing (USFeet) 177,137.27	Easting (USFeet) 1,490,434.19	Datum: KY North	
Northing (M) 53,991.548	Easting (M) 454,285.250	Datum: KY North	
Latitude: 37°59'06.94334"N	Longitude: 84°46'13.35641"W	Datum: NAD83	
Ahead Station:	Ahead Azimuth: ° ' "	Ahead Distance:	
Back Station: 160 AZ	Back Azimuth: 234 ° 49 ' 16 "	Back Distance: 1,244.75	
Data Entry: GB	Checked By: MEM	Date: 11/30/2004	

A: 17.2' TO CENTER OF McCOWANS FERRY ROAD
 B: 31.0' TO ENTRANCE KEYBOARD POST
 C: 56.4' TO MAILBOX @ 5320

Point #160

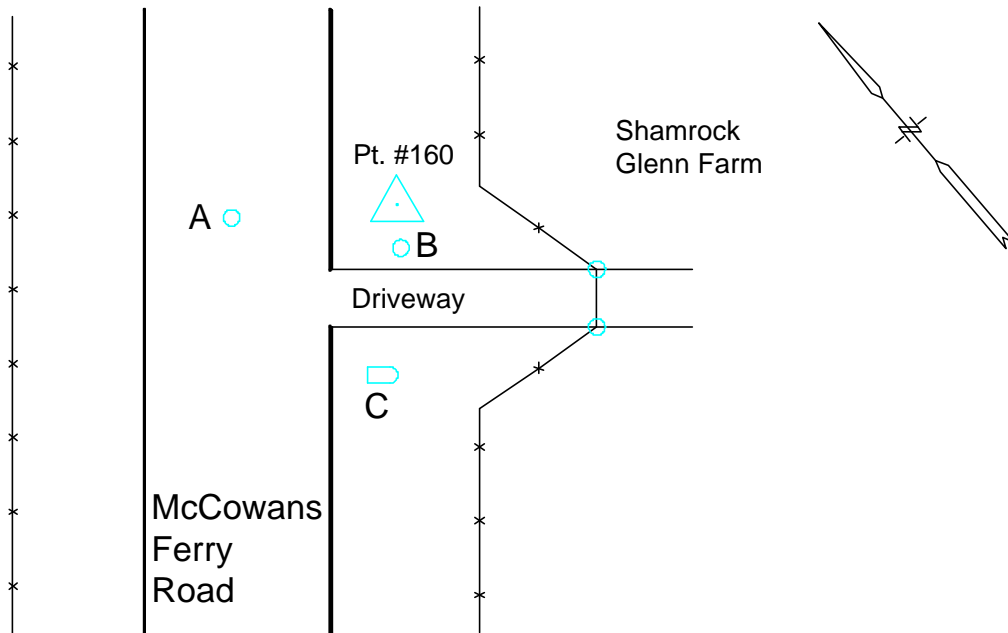




Photo Science, Inc.

CONTROL REFERENCE SUMMARY

Project Name: Woodford County GIS		Agency: VMWC Planning	
Quad Sheet: Salvisa	County: Woodford	State: KY	Date Set: 10/1/2004
Station: 160 AZ	Type of Mark: Concrete Monument	Stamping on Mark: 160 AZ	Established By: Photo Science, Inc.
Elev (USFeet) 834.36	Elev (M): 254.313	Datum: NAVD88	
Northing (USFeet) 176,420.13	Easting (USFeet) 1,489,416.78	Datum: KY North	
Northing (M) 53,772.963	Easting (M) 453,975.142	Datum: KY North	
Latitude: 37°58'59.79697"N	Longitude: 84°46'26.01322"W	Datum: NAD83	
Ahead Station: 160	Ahead Azimuth: 54 ° 49' 16 "	Ahead Distance: 1244.75	
Back Station:	Back Azimuth: ° ' "	Back Distance:	
Data Entry: GB	Checked By: MEM	Date: 11/30/2004	

- A: 14.6' TO END OF 18" CMP
- B: 9.3' TO CENTER OF CRAIGS CREEK ROAD
- C: 15.0' TO END POST OF A PLANK POST

Point #160 AZ

