



Photo Science, Inc.

CONTROL REFERENCE SUMMARY

Project Name: Woodford County GIS		Agency: VMWC Planning	
Quad Sheet: Versailles	County: Woodford	State: KY	Date Set: 10/1/2004
Station: 151	Type of Mark: Concrete Monument	Stamping on Mark: 151	Established By: Photo Science, Inc.
Elev (USFeet) 934.83	Elev (M): 284.937	Datum: NAVD88	
Northing (USFeet) 185,771.67	Easting (USFeet) 1,519,576.55	Datum: KY North	
Northing (M) 56,623.318	Easting (M) 463,167.859	Datum: KY North	
Latitude: 38°00'33.76983"N	Longitude: 84°40'09.85041"W	Datum: NAD83	
Ahead Station:	Ahead Azimuth: ° ' "	Ahead Distance:	
Back Station: 151 AZ	Back Azimuth: 275 ° 06 ' 37 "	Back Distance: 683.03	
Data Entry: GB	Checked By: MEM	Date: 11/30/2004	

- A: 114.0' TO "45 MPH" SIGN
- B: 80.9' TO "STOP AHEAD" SIGN
- C: 6.0' TO CARSONITE POST @ FENCE

Point #151

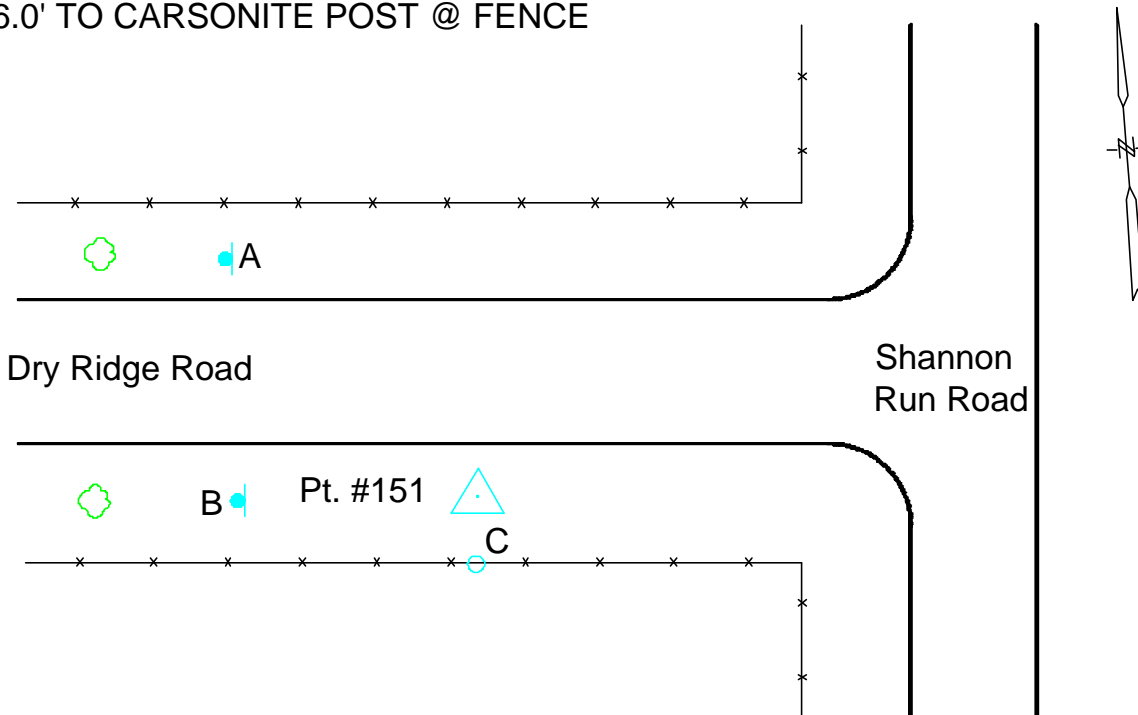




Photo Science, Inc.

CONTROL REFERENCE SUMMARY

Project Name: Woodford County GIS		Agency: VMWC Planning	
Quad Sheet: Versailles	County: Woodford	State: KY	Date Set: 10/1/2004
Station: 151 AZ	Type of Mark: Concrete Monument	Stamping on Mark: 151 AZ	Established By: Photo Science, Inc.
Elev (USFeet) 911.36	Elev (M): 277.783	Datum: NAVD88	
Northing (USFeet) 185,832.51	Easting (USFeet) 1,518,896.24	Datum: KY North	
Northing (M) 56,641.862	Easting (M) 462,960.500	Datum: KY North	
Latitude: 38°00'34.34055"N	Longitude: 84°40'18.35401"W	Datum: NAD83	
Ahead Station: 151	Ahead Azimuth: 95 ° 06' 37 "	Ahead Distance: 683.03	
Back Station:	Back Azimuth: ° ' "	Back Distance:	
Data Entry: GB	Checked By: MEM	Date: 11/30/2004	

- A: 51.9' TO A 28" HICKORY TREE
- B: 68.0' TO A 28" HICKORY TREE
- C: 2.7' TO A CARSONITE POST @ FENCE

Point #151 AZ

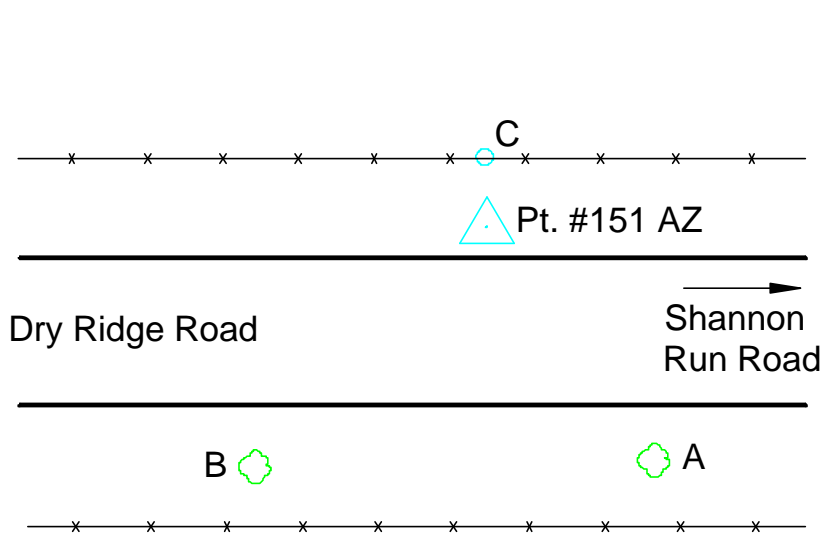




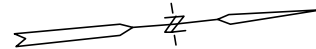
Photo Science, Inc.

CONTROL REFERENCE SUMMARY

Project Name: Woodford County GIS		Agency: VMWC Planning	
Quad Sheet: Versailles	County: Woodford	State: KY	Date Set: 10/1/2004
Station: 152	Type of Mark: Concrete Monument	Stamping on Mark: 152	Established By: Photo Science, Inc.
Elev (USFeet) 907.52	Elev (M): 276.613	Datum: NAVD88	
Northing (USFeet) 191,933.87	Easting (USFeet) 1,520,389.18	Datum: KY North	
Northing (M) 58,501.561	Easting (M) 463,415.549	Datum: KY North	
Latitude: 38°01'34.72383"N	Longitude: 84°40'00.04539"W	Datum: NAD83	
Ahead Station:	Ahead Azimuth: ° ' "	Ahead Distance:	
Back Station: 152 AZ	Back Azimuth: 21 ° 00 ' 33 "	Back Distance: 744.18	
Data Entry: GB	Checked By: MEM	Date: 11/30/2004	

- A: 34.1' TO A TELEPHONE POLE
- B: 55.9' TO CORNER FENCE POST
- C: 29.8' TO CORNER FENCE POST

Point #152



A



Shannon Run Road

To US 60

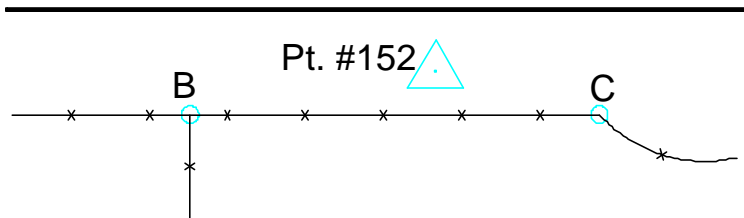




Photo Science, Inc.

CONTROL REFERENCE SUMMARY

Project Name: Woodford County GIS		Agency: VMWC Planning	
Quad Sheet: Versailles	County: Woodford	State: KY	Date Set: 10/1/2004
Station: 152 AZ	Type of Mark: Concrete Monument	Stamping on Mark: 152 AZ	Established By: Photo Science, Inc.
Elev (USFeet) 932.46	Elev (M): 284.214	Datum: NAVD88	
Northing (USFeet) 192,628.58	Easting (USFeet) 1,520,655.98	Datum: KY North	
Northing (M) 58,713.309	Easting (M) 463,496.870	Datum: KY North	
Latitude: 38°01'41.60338"N	Longitude: 84°39'56.75036"W	Datum: NAD83	
Ahead Station: 152	Ahead Azimuth: 201 ° 00' 33 "	Ahead Distance: 744.18	
Back Station:	Back Azimuth: ° ' "	Back Distance:	
Data Entry: GB	Checked By: MEM	Date: 11/30/2004	

- A: 40.8' TO A TELEPHONE POLE
- B: 37.7' TO CORNER FENCE POST
- C: 37.8' TO CORNER FENCE POST

Point #152 AZ

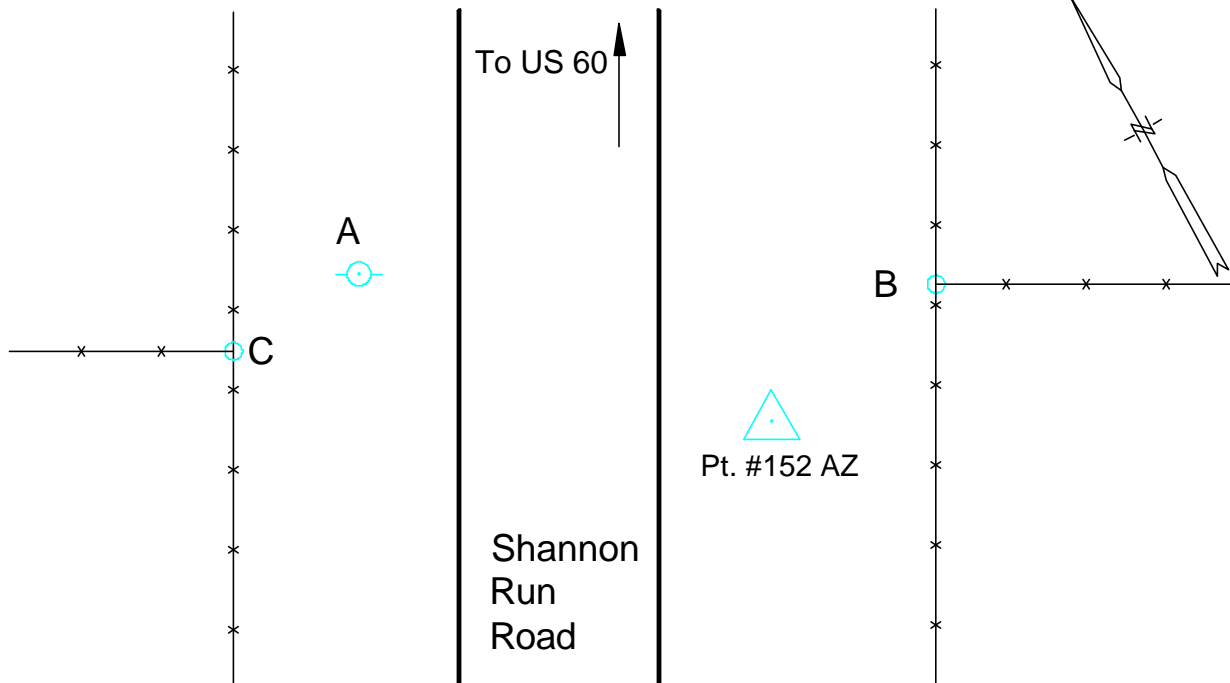




Photo Science, Inc.

CONTROL REFERENCE SUMMARY

Project Name: Woodford County GIS		Agency: VMWC Planning	
Quad Sheet: Versailles	County: Woodford	State: KY	Date Set: 10/1/2004
Station: 153	Type of Mark: Concrete Monument	Stamping on Mark: 153	Established By: Photo Science, Inc.
Elev (USFeet) 948.21	Elev (M): 289.015	Datum: NAVD88	
Northing (USFeet) 193,540.53	Easting (USFeet) 1,515,092.70	Datum: KY North	
Northing (M) 58,991.272	Easting (M) 461,801.179	Datum: KY North	
Latitude: 38°01'50.36466"N	Longitude: 84°41'06.33208"W	Datum: NAD83	
Ahead Station:	Ahead Azimuth: ° ' "	Ahead Distance:	
Back Station: 153 AZ	Back Azimuth: 80 ° 50 ' 58 "	Back Distance: 897.50	
Data Entry: GB	Checked By: MEM	Date: 11/30/2004	

- A: 69.8' TO A 36" ASH TREE
- B: 77.0' TO A 28" ASH TREE
- C: 13.3' TO A CARSONITE POST @ FENCE

Point #153

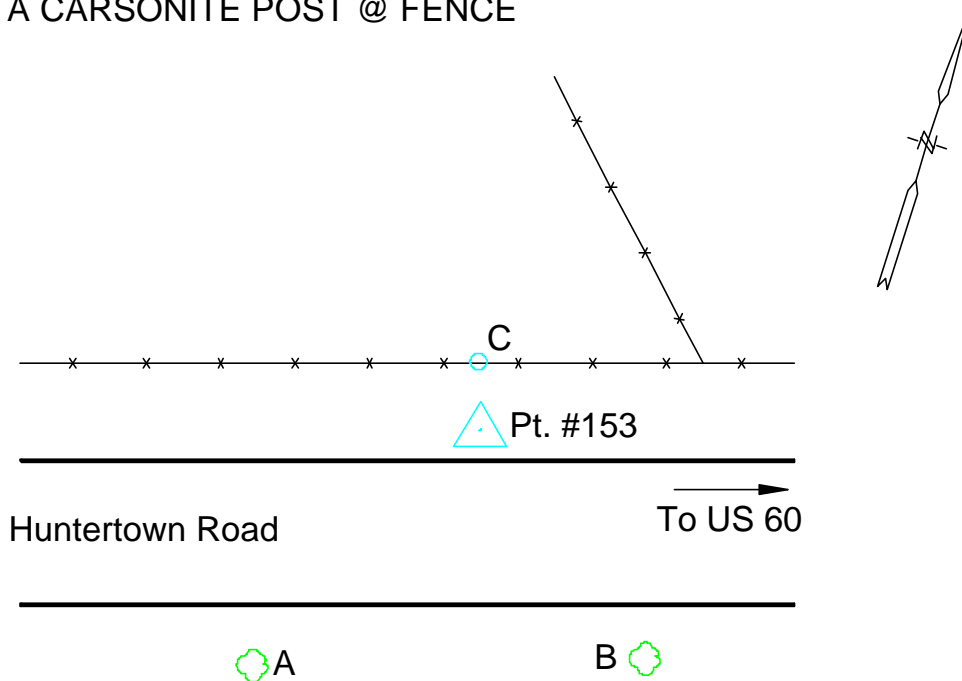




Photo Science, Inc.

CONTROL REFERENCE SUMMARY

Project Name: Woodford County GIS		Agency: VMWC Planning	
Quad Sheet: Versailles	County: Woodford	State: KY	Date Set: 10/1/2004
Station: 153 AZ	Type of Mark: Concrete Monument	Stamping on Mark: 153 AZ	Established By: Photo Science, Inc.
Elev (USFeet) 939.96	Elev (M): 286.500	Datum: NAVD88	
Northing (USFeet) 193,683.26	Easting (USFeet) 1,515,978.78	Datum: KY North	
Northing (M) 59,034.776	Easting (M) 462,071.256	Datum: KY North	
Latitude: 38°01'51.81686"N	Longitude: 84°40'55.26617"W	Datum: NAD83	
Ahead Station: 153	Ahead Azimuth: 260° 50' 58 "	Ahead Distance: 897.5	
Back Station:	Back Azimuth: ° ' "	Back Distance:	
Data Entry: GB	Checked By: MEM	Date: 11/30/2004	

- A: 26.3' TO CENTER OF 12" CMP
- B: 42.8' TO "DOUBLE D RANCH" SIGN
- C: 78.3' TO A 30" LOCUST TREE

Point #153 AZ

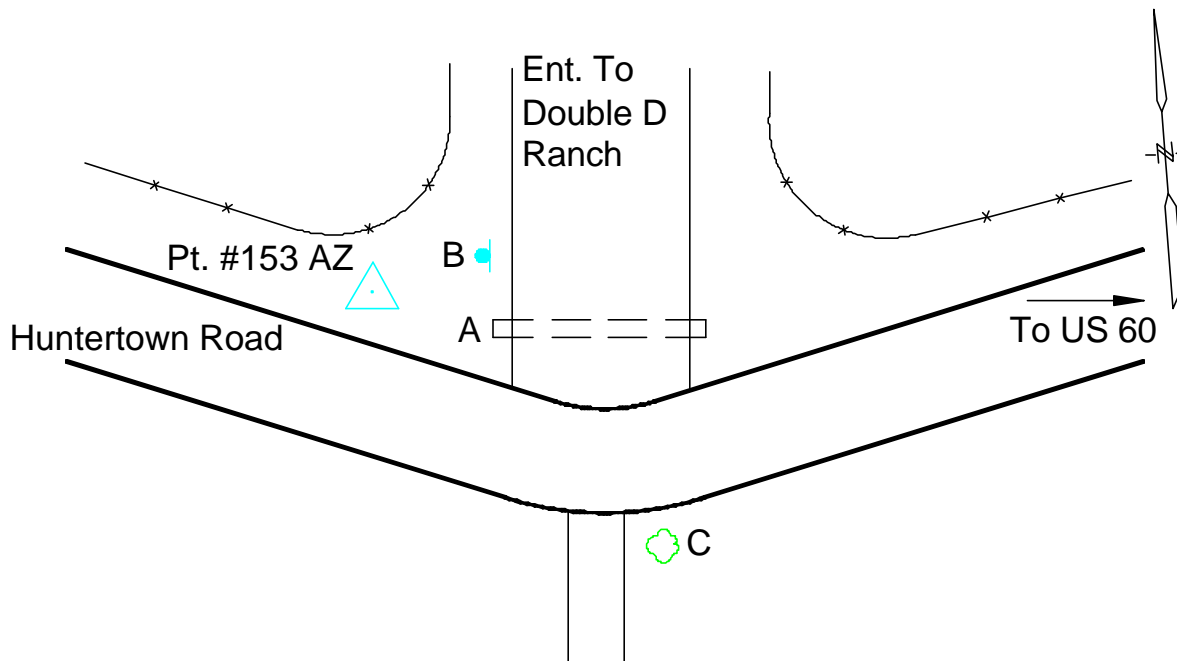




Photo Science, Inc.

CONTROL REFERENCE SUMMARY

Project Name: Woodford County GIS		Agency: VMWC Planning	
Quad Sheet: Versailles	County: Woodford	State: KY	Date Set: 10/1/2004
Station: 154	Type of Mark: Concrete Monument	Stamping on Mark: 154	Established By: Photo Science, Inc.
Elev (USFeet) 874.38	Elev (M): 266.512	Datum: NAVD88	
Northing (USFeet) 189,586.01	Easting (USFeet) 1,502,318.81	Datum: KY North	
Northing (M) 57,785.931	Easting (M) 457,907.689	Datum: KY North	
Latitude: 38°01'10.64469"N	Longitude: 84°43'45.72358"W	Datum: NAD83	
Ahead Station:	Ahead Azimuth: ° ' "	Ahead Distance:	
Back Station: 154 AZ	Back Azimuth: 247 ° 52 ' 38 "	Back Distance: 988.55	
Data Entry: GB	Checked By: MEM	Date: 11/30/2004	

- A: 32.7' TO A TELEPHONE POLE
- B: 49.3' TO A POWER POLE
- C: 61.3' TO A 10" HACKBERRY TREE

Point #154

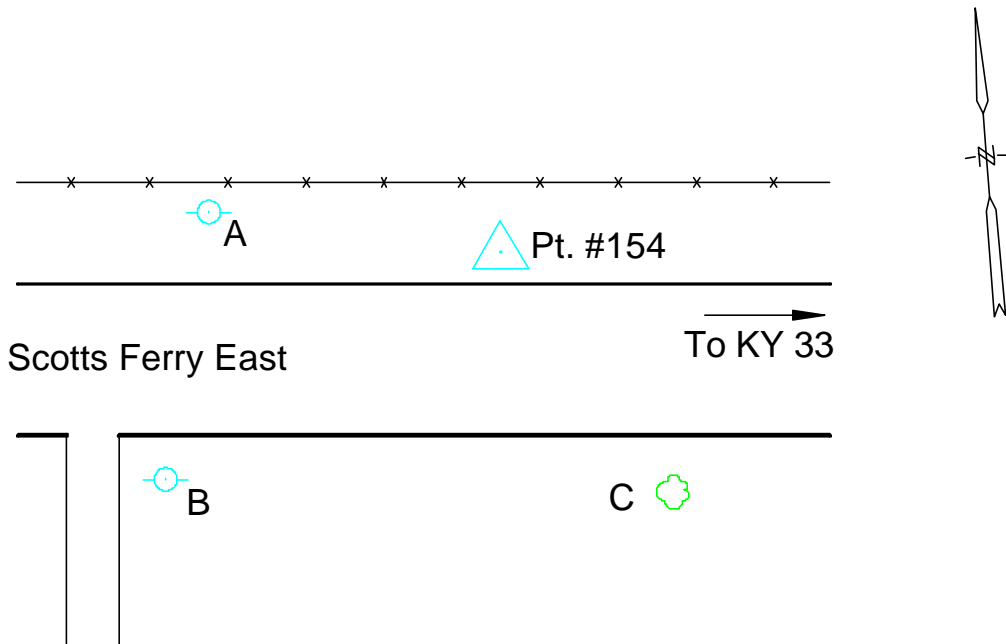




Photo Science, Inc.

CONTROL REFERENCE SUMMARY

Project Name: Woodford County GIS		Agency: VMWC Planning	
Quad Sheet: Versailles	County: Woodford	State: KY	Date Set: 10/1/2004
Station: 154 AZ	Type of Mark: Concrete Monument	Stamping on Mark: 154 AZ	Established By: Photo Science, Inc.
Elev (USFeet) 920.39	Elev (M): 280.535	Datum: NAVD88	
Northing (USFeet) 189,213.73	Easting (USFeet) 1,501,403.04	Datum: KY North	
Northing (M) 57,672.460	Easting (M) 457,628.562	Datum: KY North	
Latitude: 38°01'06.91726"N	Longitude: 84°43'57.14285"W	Datum: NAD83	
Ahead Station: 154	Ahead Azimuth: 67° 52' 38 "	Ahead Distance: 988.55	
Back Station:	Back Azimuth: ° ' "	Back Distance:	
Data Entry: GB	Checked By: MEM	Date: 11/30/2004	

A: 12.1' TO A MAILBOX @ 610 SCOTTS FERRY EAST

B: 74.5' TO A UTILITY POLE

C: 1.8' TO A CARSONITE POST @ FENCE

Point #154 AZ

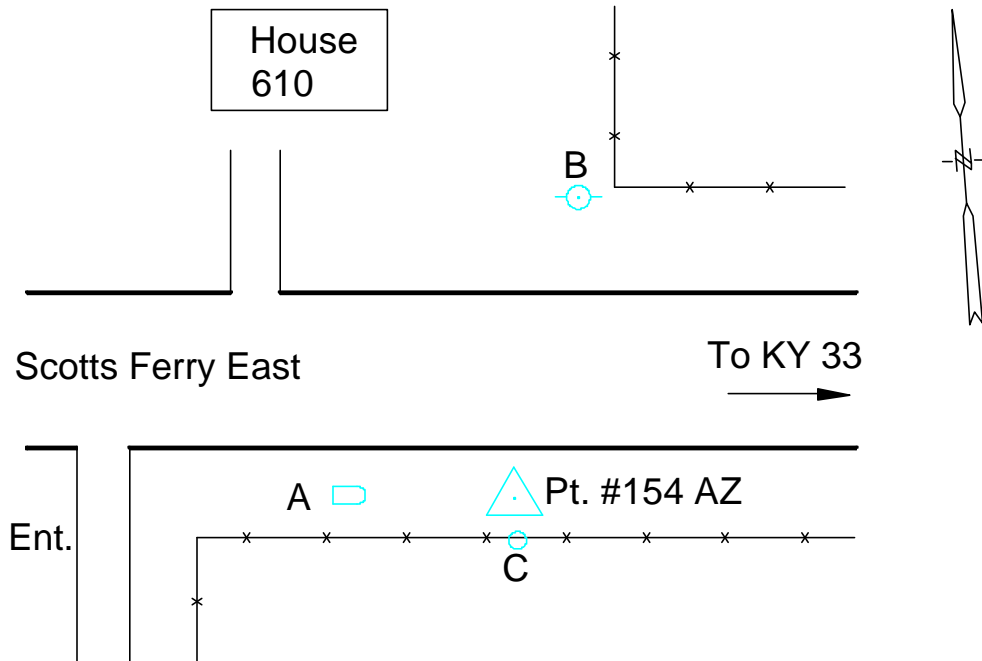




Photo Science, Inc.

CONTROL REFERENCE SUMMARY

Project Name: Woodford County GIS		Agency: VMWC Planning	
Quad Sheet: Keene	County: Woodford	State: KY	Date Set: 10/1/2004
Station: 155	Type of Mark: Concrete Monument	Stamping on Mark: 155	Established By: Photo Science, Inc.
Elev (USFeet) 870.49	Elev (M): 265.326	Datum: NAVD88	
Northing (USFeet) 179,049.33	Easting (USFeet) 1,513,258.71	Datum: KY North	
Northing (M) 54,574.345	Easting (M) 461,242.177	Datum: KY North	
Latitude: 37°59'27.02318"N	Longitude: 84°41'28.38591"W	Datum: NAD83	
Ahead Station:	Ahead Azimuth: ° ' "	Ahead Distance:	
Back Station: 155 AZ	Back Azimuth: 10 ° 07 ' 34 "	Back Distance: 978.57	
Data Entry: GB	Checked By: MEM	Date: 11/30/2004	

- A: 7.7' TO MAILBOX POST
- B: 20.9' TO POST BY WATER SPICKET
- C: 12.2' TO CENTER OF MILLION LANE

Point #155

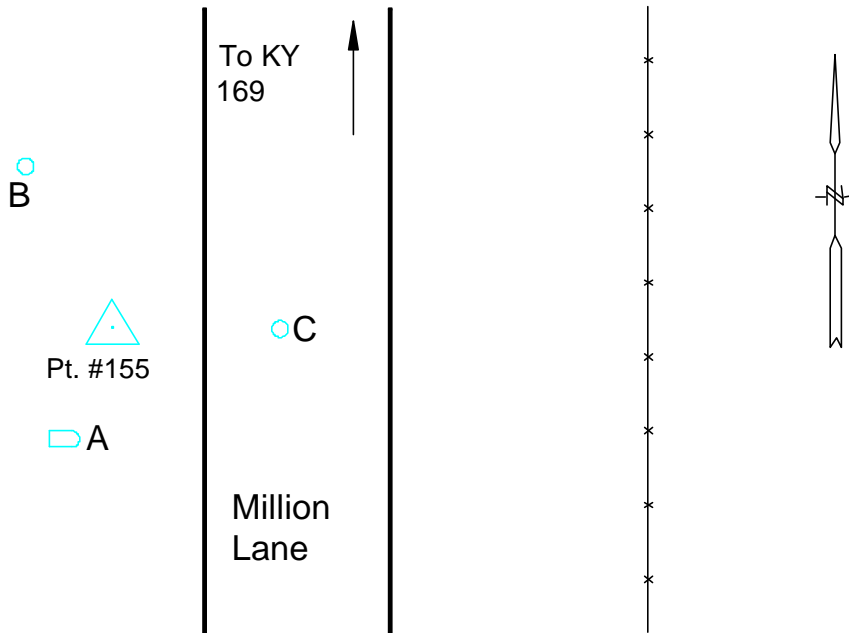




Photo Science, Inc.

CONTROL REFERENCE SUMMARY

Project Name: Woodford County GIS		Agency: VMWC Planning	
Quad Sheet: Keene	County: Woodford	State: KY	Date Set: 10/1/2004
Station: 155 AZ	Type of Mark: Concrete Monument	Stamping on Mark: 155 AZ	Established By: Photo Science, Inc.
Elev (USFeet) 909.43	Elev (M): 277.195	Datum: NAVD88	
Northing (USFeet) 180,012.66	Easting (USFeet) 1,513,430.76	Datum: KY North	
Northing (M) 54,867.969	Easting (M) 461,294.618	Datum: KY North	
Latitude: 37°59'36.55445"N	Longitude: 84°41'26.29432"W	Datum: NAD83	
Ahead Station: 155	Ahead Azimuth: 190 ° 07' 34 "	Ahead Distance: 978.57	
Back Station:	Back Azimuth: ° ' "	Back Distance:	
Data Entry: GB	Checked By: MEM	Date: 11/30/2004	

- A: 11.4' TO CORNER FENCE POST
- B: 7.2' TO "STOP" SIGN
- C: 4.0' TO CARSONITE POST @ FENCE

Point #155 AZ

