



Photo Science, Inc.

# CONTROL REFERENCE SUMMARY

<b>Project Name:</b> Woodford County GIS		<b>Agency:</b> VMWC Planning	
<b>Quad Sheet:</b> Tyrone	<b>County:</b> Woodford	<b>State:</b> KY	<b>Date Set:</b> 10/1/2004
<b>Station:</b> 121	<b>Type of Mark:</b> Concrete Monument	<b>Stamping on Mark:</b> 121	<b>Established By:</b> Photo Science, Inc.
<b>Elev (USFeet)</b> 875.98	<b>Elev (M):</b> 266.999	<b>Datum:</b> NAVD88	
<b>Northing (USFeet)</b> 205,200.14	<b>Easting (USFeet)</b> 1,479,975.92	<b>Datum:</b> KY North	
<b>Northing (M)</b> 62,545.128	<b>Easting (M)</b> 451,097.563	<b>Datum:</b> KY North	
<b>Latitude:</b> 38°03'43.75707"N	<b>Longitude:</b> 84°48'26.10302"W	<b>Datum:</b> NAD83	
<b>Ahead Station:</b>	<b>Ahead Azimuth:</b> °   '   "	<b>Ahead Distance:</b>	
<b>Back Station:</b> 121 AZ	<b>Back Azimuth:</b> 130 ° 34 ' 58 "	<b>Back Distance:</b> 539.48	
<b>Data Entry:</b> GB	<b>Checked By:</b> MEM	<b>Date:</b> 11/30/2004	

A: 106.5' TO 36" ELM TREE  
 B: 26.6' TO 15" MAPLE TREE  
 C: 1.0' TO A CARSONITE POST

## Point #121

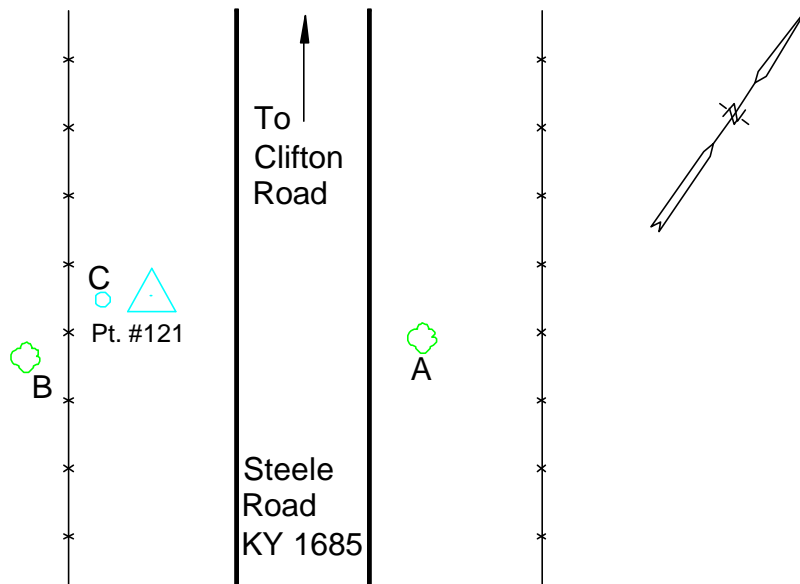




Photo Science, Inc.

# CONTROL REFERENCE SUMMARY

<b>Project Name:</b> Woodford County GIS		<b>Agency:</b> VMWC Planning	
<b>Quad Sheet:</b> Tyrone	<b>County:</b> Woodford	<b>State:</b> KY	<b>Date Set:</b> 10/1/2004
<b>Station:</b> 121 AZ	<b>Type of Mark:</b> Concrete Monument	<b>Stamping on Mark:</b> 121 AZ	<b>Established By:</b> Photo Science, Inc.
<b>Elev (USFeet)</b> 871.13	<b>Elev (M):</b> 265.521	<b>Datum:</b> NAVD88	
<b>Northing (USFeet)</b> 204,849.18	<b>Easting (USFeet)</b> 1,480,385.64	<b>Datum:</b> KY North	
<b>Northing (M)</b> 62,438.155	<b>Easting (M)</b> 451,222.446	<b>Datum:</b> KY North	
<b>Latitude:</b> 38°03'40.31212"N	<b>Longitude:</b> 84°48'20.95368"W	<b>Datum:</b> NAD83	
<b>Ahead Station:</b> 121	<b>Ahead Azimuth:</b> 310 ° 34' 58 "	<b>Ahead Distance:</b> 539.48	
<b>Back Station:</b>	<b>Back Azimuth:</b> ° ' "	<b>Back Distance:</b>	
<b>Data Entry:</b> GB	<b>Checked By:</b> MEM	<b>Date:</b> 11/30/2004	

- A: 13.0' TO 28" HACKBERRY TREE
- B: 55.0' TO A TELEPHONE POLE
- C: 1.0' TO A CARSONITE POST

## Point #121 AZ

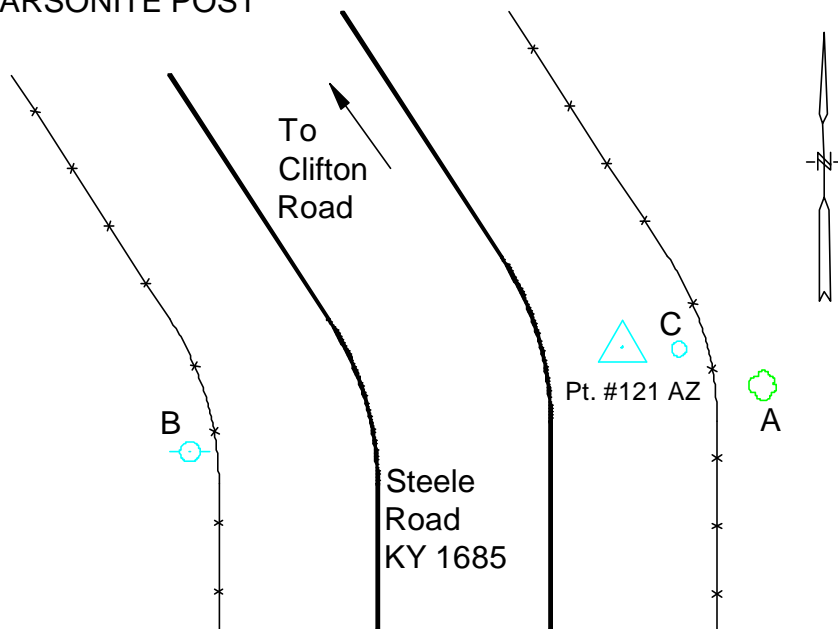




Photo Science, Inc.

# CONTROL REFERENCE SUMMARY

<b>Project Name:</b> Woodford County GIS		<b>Agency:</b> VMWC Planning	
<b>Quad Sheet:</b> Tyrone	<b>County:</b> Woodford	<b>State:</b> KY	<b>Date Set:</b> 10/1/2004
<b>Station:</b> 122	<b>Type of Mark:</b> Concrete Monument	<b>Stamping on Mark:</b> 122	<b>Established By:</b> Photo Science, Inc.
<b>Elev (USFeet)</b> 790.32	<b>Elev (M):</b> 240.890	<b>Datum:</b> NAVD88	
<b>Northing (USFeet)</b> 196,654.89	<b>Easting (USFeet)</b> 1,471,879.81	<b>Datum:</b> KY North	
<b>Northing (M)</b> 59,940.530	<b>Easting (M)</b> 448,629.863	<b>Datum:</b> KY North	
<b>Latitude:</b> 38°02'18.78594"N	<b>Longitude:</b> 84°50'06.65291"W	<b>Datum:</b> NAD83	
<b>Ahead Station:</b>	<b>Ahead Azimuth:</b> °   '   "	<b>Ahead Distance:</b>	
<b>Back Station:</b> 122 AZ	<b>Back Azimuth:</b> 278 ° 52 ' 03 "	<b>Back Distance:</b> 559.97	
<b>Data Entry:</b> GB	<b>Checked By:</b> MEM	<b>Date:</b> 11/30/2004	

- A: 22.0' TO CENTER LINE OF HWY 62
- B: 21.0' TO 20" ELM TREE
- C: 45.2' TO MAILBOX @ 6343

## Point #122

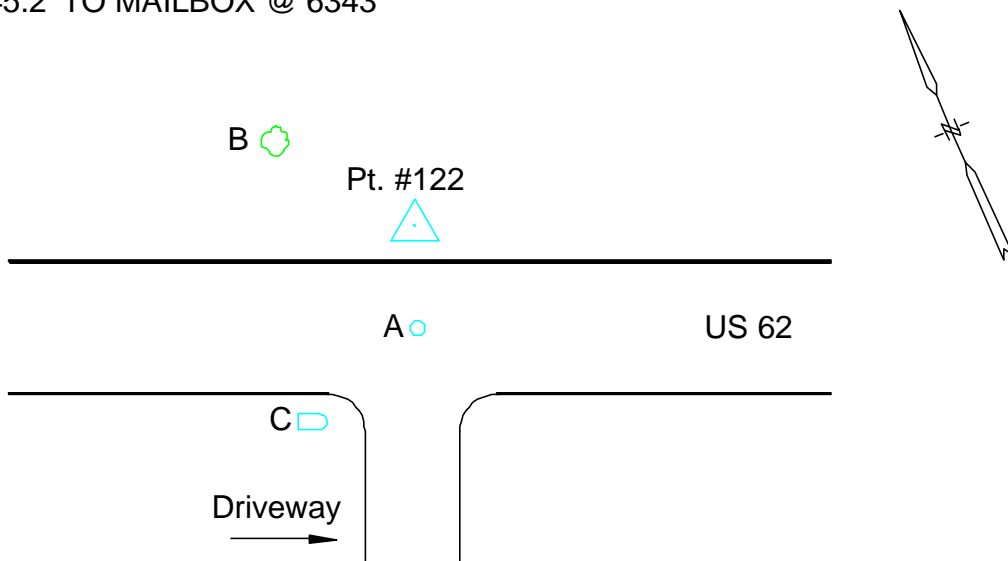




Photo Science, Inc.

# CONTROL REFERENCE SUMMARY

<b>Project Name:</b> Woodford County GIS		<b>Agency:</b> VMWC Planning	
<b>Quad Sheet:</b> Tyrone	<b>County:</b> Woodford	<b>State:</b> KY	<b>Date Set:</b> 10/1/2004
<b>Station:</b> 122 AZ	<b>Type of Mark:</b> Concrete Monument	<b>Stamping on Mark:</b> 122 AZ	<b>Established By:</b> Photo Science, Inc.
<b>Elev (USFeet)</b> 771.93	<b>Elev (M):</b> 235.285	<b>Datum:</b> NAVD88	
<b>Northing (USFeet)</b> 196,741.21	<b>Easting (USFeet)</b> 1,471,326.53	<b>Datum:</b> KY North	
<b>Northing (M)</b> 59,966.841	<b>Easting (M)</b> 448,461.223	<b>Datum:</b> KY North	
<b>Latitude:</b> 38°02'19.60448"N	<b>Longitude:</b> 84°50'13.57545"W	<b>Datum:</b> NAD83	
<b>Ahead Station:</b> 122	<b>Ahead Azimuth:</b> 98 ° 52' 03 "	<b>Ahead Distance:</b> 559.97	
<b>Back Station:</b>	<b>Back Azimuth:</b> ° ' "	<b>Back Distance:</b>	
<b>Data Entry:</b> GB	<b>Checked By:</b> MEM	<b>Date:</b> 11/30/2004	

- A: 40.5' TO CENTER OF DRIVEWAY @ FIRE GATE 98
- B: 15.7' TO CENTER LINE OF US 62
- C: 12.5' TO WIRE FENCE

## Point #122 AZ

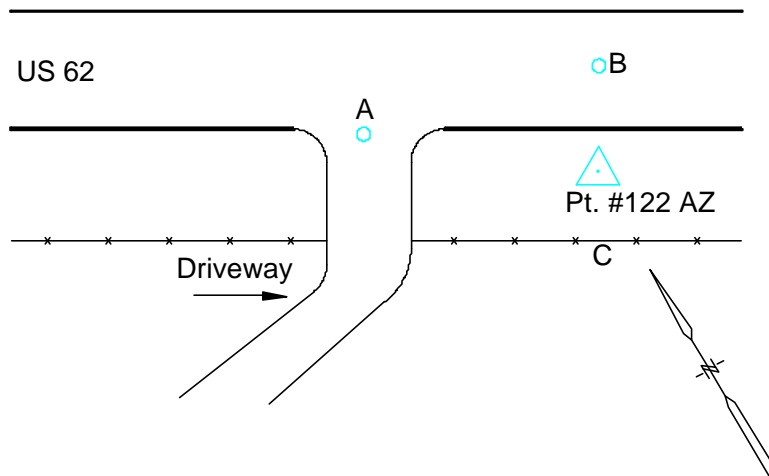




Photo Science, Inc.

# CONTROL REFERENCE SUMMARY

<b>Project Name:</b> Woodford County GIS		<b>Agency:</b> VMWC Planning	
<b>Quad Sheet:</b> Tyrone	<b>County:</b> Woodford	<b>State:</b> KY	<b>Date Set:</b> 10/1/2004
<b>Station:</b> 123	<b>Type of Mark:</b> Concrete Monument	<b>Stamping on Mark:</b> 123	<b>Established By:</b> Photo Science, Inc.
<b>Elev (USFeet)</b> 871.86	<b>Elev (M):</b> 265.743	<b>Datum:</b> NAVD88	
<b>Northing (USFeet)</b> 194,814.04	<b>Easting (USFeet)</b> 1,484,001.57	<b>Datum:</b> KY North	
<b>Northing (M)</b> 59,379.438	<b>Easting (M)</b> 452,324.583	<b>Datum:</b> KY North	
<b>Latitude:</b> 38°02'01.32203"N	<b>Longitude:</b> 84°47'35.00306"W	<b>Datum:</b> NAD83	
<b>Ahead Station:</b>	<b>Ahead Azimuth:</b> °   '   "	<b>Ahead Distance:</b>	
<b>Back Station:</b> 123 AZ	<b>Back Azimuth:</b> 197 ° 32 ' 01 "	<b>Back Distance:</b> 525.48	
<b>Data Entry:</b> GB	<b>Checked By:</b> MEM	<b>Date:</b> 11/30/2004	

A: 60.6' TO FENCE CORNER  
 B: 3.9' TO A CARSONITE POST  
 C: 91.0' TO A UTILITY POLE

## Point #123

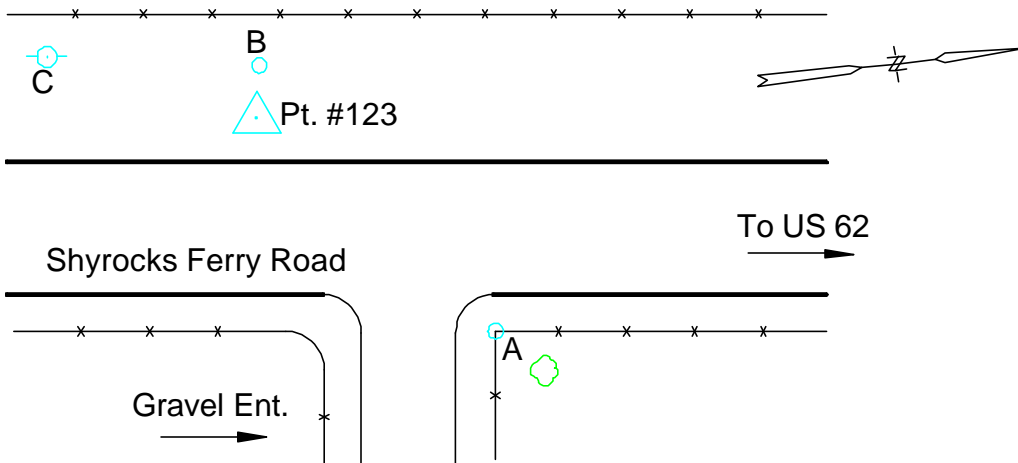




Photo Science, Inc.

# CONTROL REFERENCE SUMMARY

<b>Project Name:</b> Woodford County GIS		<b>Agency:</b> VMWC Planning	
<b>Quad Sheet:</b> Tyrone	<b>County:</b> Woodford	<b>State:</b> KY	<b>Date Set:</b> 10/1/2004
<b>Station:</b> 123 AZ	<b>Type of Mark:</b> Concrete Monument	<b>Stamping on Mark:</b> 123 AZ	<b>Established By:</b> Photo Science, Inc.
<b>Elev (USFeet)</b> 858.79	<b>Elev (M):</b> 261.760	<b>Datum:</b> NAVD88	
<b>Northing (USFeet)</b> 194,312.97	<b>Easting (USFeet)</b> 1,483,843.26	<b>Datum:</b> KY North	
<b>Northing (M)</b> 59,226.712	<b>Easting (M)</b> 452,276.330	<b>Datum:</b> KY North	
<b>Latitude:</b> 38°01'56.35947"N	<b>Longitude:</b> 84°47'36.94475"W	<b>Datum:</b> NAD83	
<b>Ahead Station:</b> 123	<b>Ahead Azimuth:</b> 17 ° 32' 01 "	<b>Ahead Distance:</b> 525.48	
<b>Back Station:</b>	<b>Back Azimuth:</b> ° ' "	<b>Back Distance:</b>	
<b>Data Entry:</b> GB	<b>Checked By:</b> MEM	<b>Date:</b> 11/30/2004	

- A: 84.5' TO A 32" HACKBERRY TREE
- B: 82.4' TO A UTILITY POLE
- C: 2.3' TO A CARSONITE POST

## Point #123 AZ

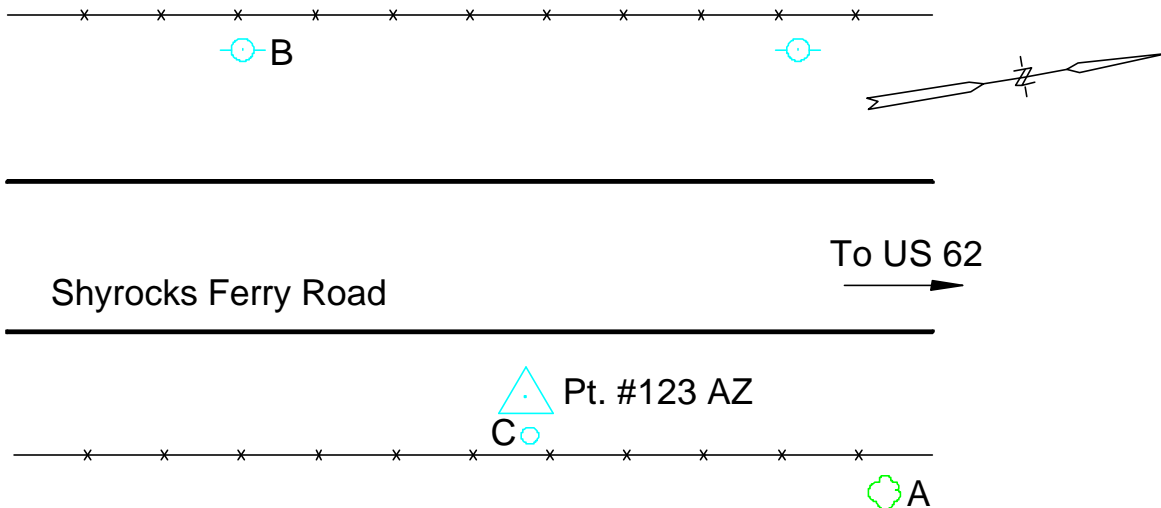




Photo Science, Inc.

# CONTROL REFERENCE SUMMARY

<b>Project Name:</b> Woodford County GIS		<b>Agency:</b> VMWC Planning	
<b>Quad Sheet:</b> Tyrone	<b>County:</b> Woodford	<b>State:</b> KY	<b>Date Set:</b> 10/1/2004
<b>Station:</b> 124	<b>Type of Mark:</b> Concrete Monument	<b>Stamping on Mark:</b> 124	<b>Established By:</b> Photo Science, Inc.
<b>Elev (USFeet)</b> 535.27	<b>Elev (M):</b> 163.151	<b>Datum:</b> NAVD88	
<b>Northing (USFeet)</b> 189,449.37	<b>Easting (USFeet)</b> 1,477,890.96	<b>Datum:</b> KY North	
<b>Northing (M)</b> 57,744.283	<b>Easting (M)</b> 450,462.066	<b>Datum:</b> KY North	
<b>Latitude:</b> 38°01'07.92599"N	<b>Longitude:</b> 84°48'50.96592"W	<b>Datum:</b> NAD83	
<b>Ahead Station:</b>	<b>Ahead Azimuth:</b> °   '   "	<b>Ahead Distance:</b>	
<b>Back Station:</b> 124 AZ	<b>Back Azimuth:</b> 269 ° 47 ' 11 "	<b>Back Distance:</b> 630.42	
<b>Data Entry:</b> GB	<b>Checked By:</b> MEM	<b>Date:</b> 11/30/2004	

- A: 8.8' TO FACE OF BRACE POLE
- B: 16.5' TO NORTH EAST END OF WINGWALL
- C: 46.2' TO A TELEPHONE POLE

## Point #124

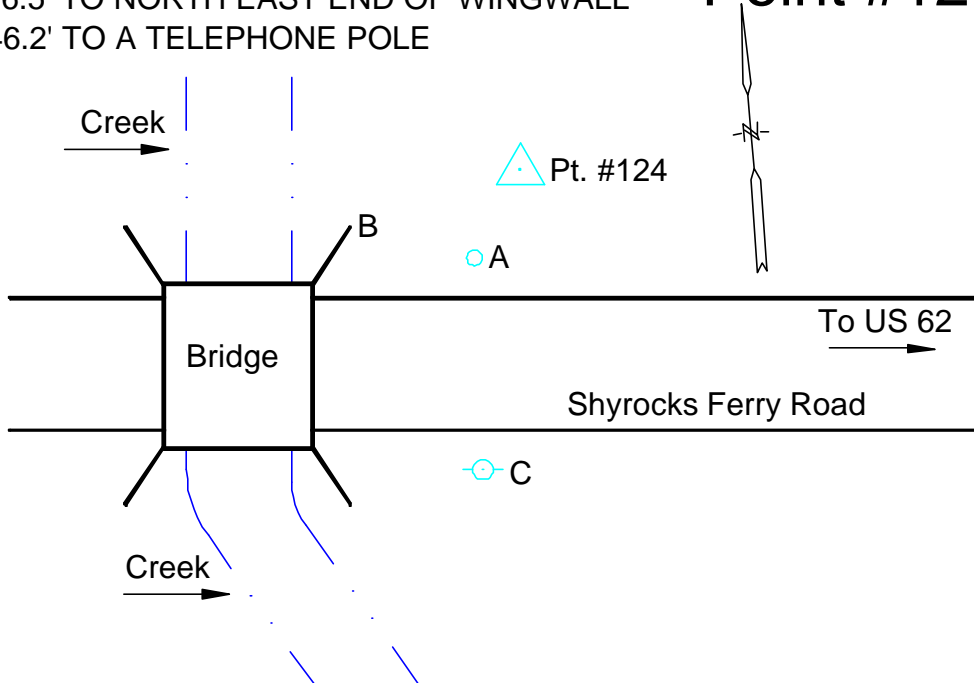




Photo Science, Inc.

# CONTROL REFERENCE SUMMARY

<b>Project Name:</b> Woodford County GIS		<b>Agency:</b> VMWC Planning	
<b>Quad Sheet:</b> Tyrone	<b>County:</b> Woodford	<b>State:</b> KY	<b>Date Set:</b> 10/1/2004
<b>Station:</b> 124 AZ	<b>Type of Mark:</b> Concrete Monument	<b>Stamping on Mark:</b> 124 AZ	<b>Established By:</b> Photo Science, Inc.
<b>Elev (USFeet)</b> 525.82	<b>Elev (M):</b> 160.270	<b>Datum:</b> NAVD88	
<b>Northing (USFeet)</b> 189,447.02	<b>Easting (USFeet)</b> 1,477,260.54	<b>Datum:</b> KY North	
<b>Northing (M)</b> 57,743.567	<b>Easting (M)</b> 450,269.913	<b>Datum:</b> KY North	
<b>Latitude:</b> 38°01'07.86454"N	<b>Longitude:</b> 84°48'58.84342"W	<b>Datum:</b> NAD83	
<b>Ahead Station:</b> 124	<b>Ahead Azimuth:</b> 89 ° 47' 11 "	<b>Ahead Distance:</b> 630.42	
<b>Back Station:</b>	<b>Back Azimuth:</b> ° ' "	<b>Back Distance:</b>	
<b>Data Entry:</b> GB	<b>Checked By:</b> MEM	<b>Date:</b> 11/30/2004	

- A: 40.0' TO LATCH END GATE POST
- B: 38.0' TO HINGE END GATE POST
- C: 71.6' TO A TELEPHONE POLE

## Point #124 AZ

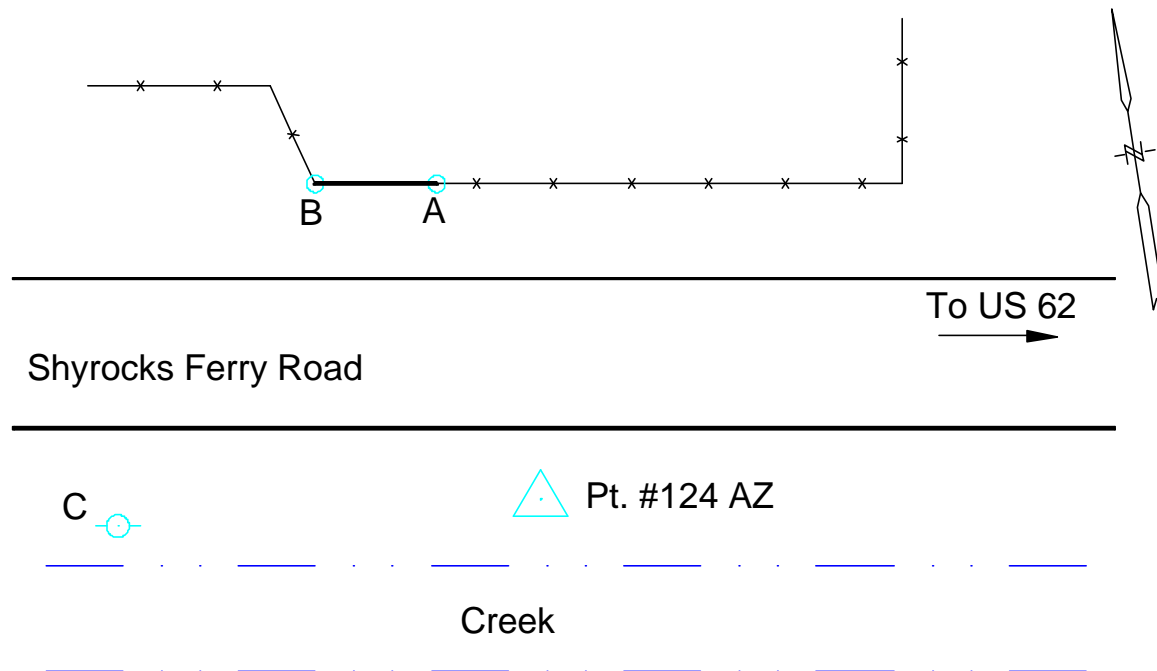






Photo Science, Inc.

# CONTROL REFERENCE SUMMARY

<b>Project Name:</b> Woodford County GIS		<b>Agency:</b> VMWC Planning	
<b>Quad Sheet:</b> Tyrone	<b>County:</b> Woodford	<b>State:</b> KY	<b>Date Set:</b> 10/1/2004
<b>Station:</b> 125	<b>Type of Mark:</b> Concrete Monument	<b>Stamping on Mark:</b> 125	<b>Established By:</b> Photo Science, Inc.
<b>Elev (USFeet)</b> 782.15	<b>Elev (M):</b> 238.400	<b>Datum:</b> NAVD88	
<b>Northing (USFeet)</b> 186,101.89	<b>Easting (USFeet)</b> 1,485,068.44	<b>Datum:</b> KY North	
<b>Northing (M)</b> 56,723.970	<b>Easting (M)</b> 452,649.766	<b>Datum:</b> KY North	
<b>Latitude:</b> 38°00'35.25910"N	<b>Longitude:</b> 84°47'21.03135"W	<b>Datum:</b> NAD83	
<b>Ahead Station:</b>	<b>Ahead Azimuth:</b> °   '   "	<b>Ahead Distance:</b>	
<b>Back Station:</b> 125 AZ	<b>Back Azimuth:</b> 99 ° 40 ' 32 "	<b>Back Distance:</b> 548.29	
<b>Data Entry:</b> GB	<b>Checked By:</b> MEM	<b>Date:</b> 11/30/2004	

- A: 38.0' TO A FENCE POST
- B: 10.0' TO A TELEPHONE POLE
- C: 2.0' TO A CARSONITE POST

## Point #125

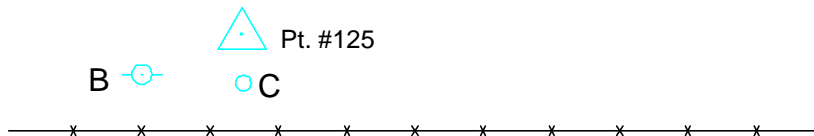
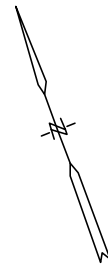
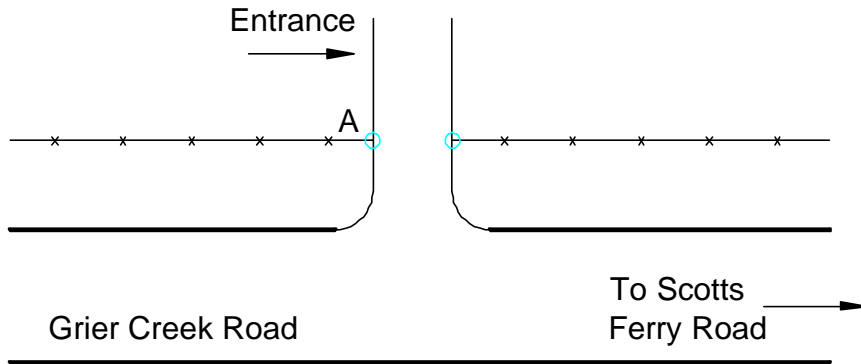




Photo Science, Inc.

# CONTROL REFERENCE SUMMARY

<b>Project Name:</b> Woodford County GIS		<b>Agency:</b> VMWC Planning	
<b>Quad Sheet:</b> Tyrone	<b>County:</b> Woodford	<b>State:</b> KY	<b>Date Set:</b> 10/1/2004
<b>Station:</b> 125 AZ	<b>Type of Mark:</b> Concrete Monument	<b>Stamping on Mark:</b> 125 AZ	<b>Established By:</b> Photo Science, Inc.
<b>Elev (USFeet)</b> 807.82	<b>Elev (M):</b> 246.224	<b>Datum:</b> NAVD88	
<b>Northing (USFeet)</b> 186,009.74	<b>Easting (USFeet)</b> 1,485,608.93	<b>Datum:</b> KY North	
<b>Northing (M)</b> 56,695.882	<b>Easting (M)</b> 452,814.507	<b>Datum:</b> KY North	
<b>Latitude:</b> 38°00'34.37936"N	<b>Longitude:</b> 84°47'14.27155"W	<b>Datum:</b> NAD83	
<b>Ahead Station:</b> 125	<b>Ahead Azimuth:</b> 279 ° 40' 32 "	<b>Ahead Distance:</b> 548.29	
<b>Back Station:</b>	<b>Back Azimuth:</b> ° ' "	<b>Back Distance:</b>	
<b>Data Entry:</b> GB	<b>Checked By:</b> MEM	<b>Date:</b> 11/30/2004	

- A: 30.5' TO A 14" CEDAR TREE
- B: 4.5' TO A TELEPHONE POLE
- C: 1.7' TO A CARSONITE POST

## Point #125 AZ

