



Photo Science, Inc.

CONTROL REFERENCE SUMMARY

Project Name: Woodford County GIS			Agency: VMWC Planning		
Quad Sheet: Versailles		County: Woodford		State: KY	
Station: 116		Type of Mark: Concrete Monument		Date Set: 2/5/2003	
Elev (FT): 877.71		Elev (M): 267.526		Datum: 1988	
Northing (FT): 202,370.82		Easting (FT): 1,496,727.59		Datum: KY North	
Northing (M): 61,682.750		Easting (M): 456,203.480		Datum: KY North	
Latitude: 38 °03'16.7371"		Longitude: 84 °44'56.4579"		Datum: NAD 83	
Ahead Station: 116 AZ		Ahead Bearing: SE 65 °07 " 16.9 "		Ahead Distance: 725.8	
Back Station:		Back Bearing: ° ' "		Back Distance:	
Data Entry: GB		Checked By: MEM		Date: 5/19/2003	

- A: 40.7' TO NE CORNER OF ENT. WALL
- B: 43.0' TO NW CORNER OF ENT. WALL
- C: 18.7' TO NEAR FACE 2" ASH TREE

MON 116

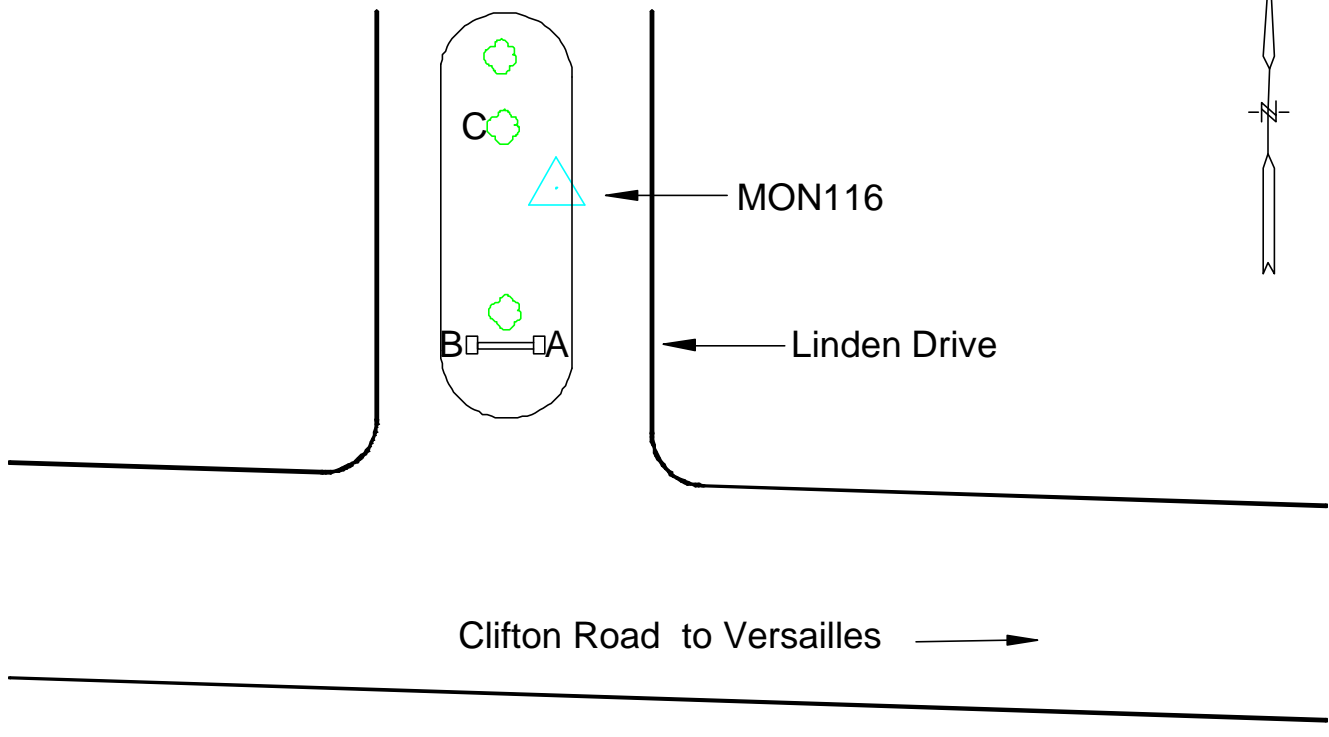




Photo Science, Inc.

CONTROL REFERENCE SUMMARY

Project Name: Woodford County GIS			Agency: VMWC Planning
Quad Sheet: Versailles	County: Woodford	State: KY	Date Set: 2/5/2003
Station: 116A	Type of Mark: Concrete Monument	Stamping on Mark: 116AZ	Established By: Photo Science, Inc.
Elev (FT): 883.37	Elev (M): 269.251	Datum: 1988	
Northing (FT): 202,061.95	Easting (FT): 1,497,384.32	Datum: KY North	
Northing (M): 61,588.604	Easting (M): 456,403.653	Datum: KY North	
Latitude: 38 °03'13.7189"	Longitude: 84 °44'48.2265"	Datum: NAD 83	
Ahead Station:	Ahead Bearing: ° " "	Ahead Distance:	
Back Station: 116	Back Bearing: NW 65 °07 ' 16.9"	Back Distance: 725.8	
Data Entry: GB	Checked By: MEM	Date: 5/19/2003	

- A: 38.0' TO WATER METER
- B: 57.4' TO SANITARY SEWER MANHOLE
- C: 38.8' TO A TRIPLE WILD CHERRY TREE

MON 116 AZ

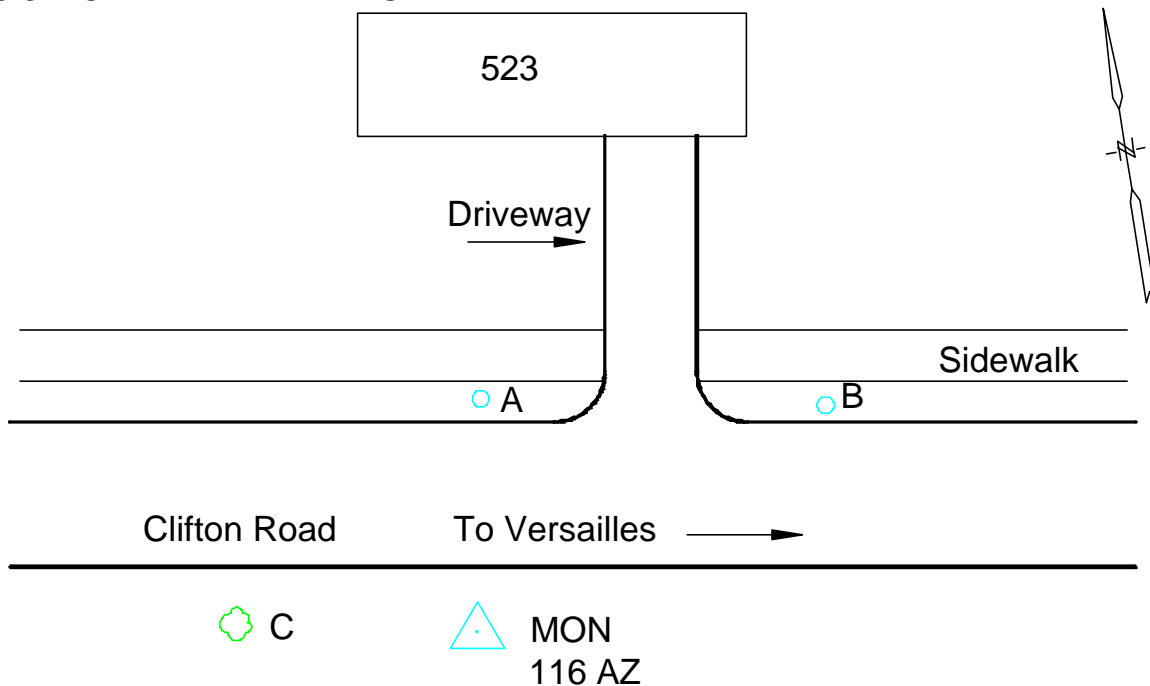




Photo Science, Inc.

CONTROL REFERENCE SUMMARY

Project Name: Woodford County GIS			Agency: VMWC Planning		
Quad Sheet: Versailles	County: Woodford	State: KY		Date Set: 2/5/2003	
Station: 117	Type of Mark: Concrete Monument	Stamping on Mark: 117		Established By: Photo Science, Inc.	
Elev (FT): 921.62		Elev (M): 280.911		Datum: 1988	
Northing (FT): 200,289.94		Easting (FT): 1,510,640.02		Datum: KY North	
Northing (M): 61,048.497		Easting (M): 460,443.999		Datum: KY North	
Latitude: 38°02'56.8754"		Longitude: 84°42'02.3948"		Datum: NAD 83	
Ahead Station: 117 AZ		Ahead Bearing: SE 77°32' 58.8"		Ahead Distance: 601.34	
Back Station:		Back Bearing: ° ' "		Back Distance:	
Data Entry: GB		Checked By: MEM		Date: 5/19/2003	

- A: 138.6' TO TELEPHONE POLE
- B: 77.3' TO CENTER OF 18" CMP
- C: 73.3' TO CORNER OF WOODEN FENCE AND BRICK ENTRANCE

MON 117

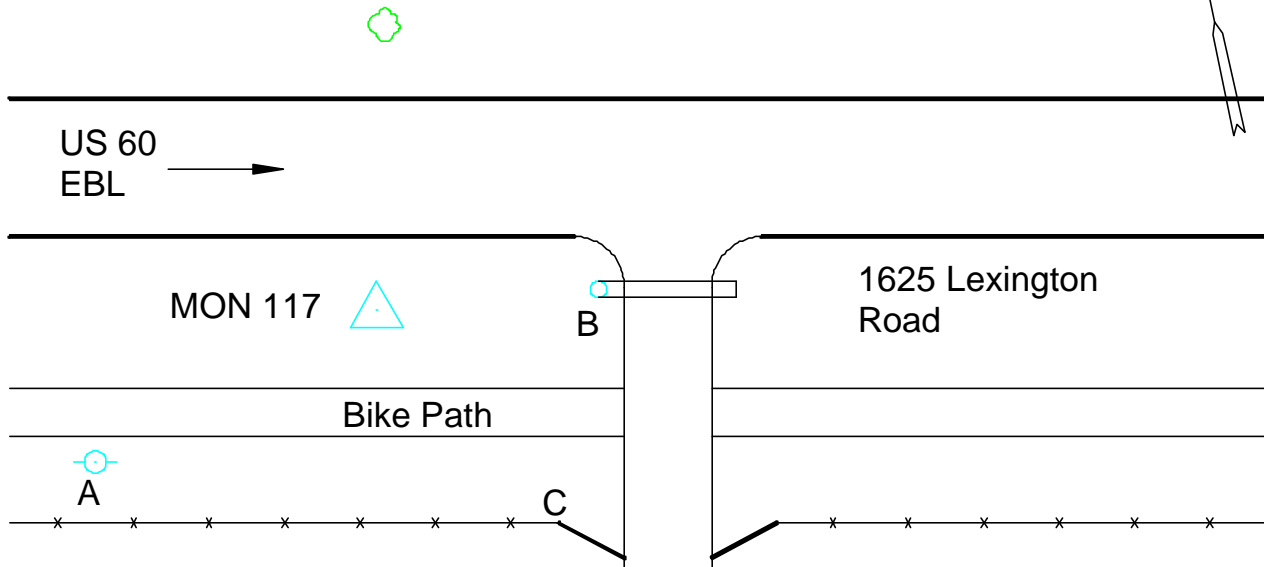




Photo Science, Inc.

CONTROL REFERENCE SUMMARY

Project Name: Woodford County GIS			Agency: VMWC Planning	
Quad Sheet: Versailles	County: Woodford	State: KY		Date Set: 2/5/2003
Station: 117A	Type of Mark: Concrete Monument	Stamping on Mark: 117AZ		Established By: Photo Science, Inc.
Elev (FT): 919.47		Elev (M): 280.254		Datum: 1988
Northing (FT): 200,157.44		Easting (FT): 1,511,226.56		Datum: KY North
Northing (M): 61,008.109		Easting (M): 460,622.776		Datum: KY North
Latitude: 38 °02'55.5938"		Longitude: 84 °41'55.0542"		Datum: NAD 83
Ahead Station:		Ahead Bearing: ° " "		Ahead Distance:
Back Station: 117		Back Bearing: NW 77 ° 32 ' 58.8"		Back Distance: 601.34
Data Entry: GB		Checked By: MEM		Date: 5/19/2003

A: 65.4' TO NE CORNER OF RCBC WING WALL
 B: 120.0' TO SE CORNER OF DITCH BOX INLET
 C: 77.3' TO A 8" TWIN CATALPA TREE

MON 117AZ

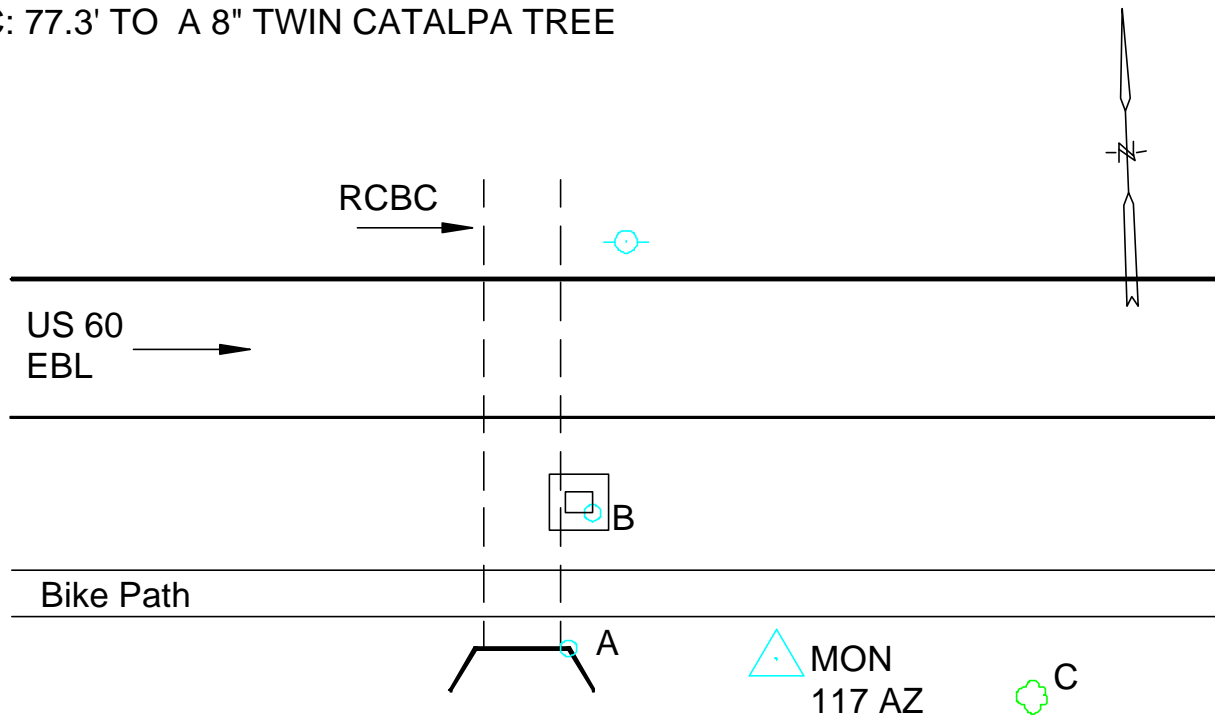




Photo Science, Inc.

CONTROL REFERENCE SUMMARY

Project Name: Woodford County GIS			Agency: VMWC Planning	
Quad Sheet: Versailles	County: Woodford	State: KY	Date Set: 2/5/2003	
Station: 118	Type of Mark: Concrete Monument	Stamping on Mark: 118	Established By: Photo Science, Inc.	
Elev (FT): 912.94	Elev (M): 278.265	Datum: 1988		
Northing (FT): 216,556.81	Easting (FT): 1,515,774.14	Datum: KY North		
Northing (M): 66,006.648	Easting (M): 462,008.882	Datum: KY North		
Latitude: 38°05'37.9274"	Longitude: 84°40'59.1681"	Datum: NAD 83		
Ahead Station: 118 AZ	Ahead Bearing: NE 56°18'11.9"	Ahead Distance: 599.7		
Back Station:	Back Bearing: ° ' "	Back Distance:		
Data Entry: GB	Checked By: MEM	Date: 5/19/2003		

- A: 118.2' TO A 24" HACKBERRY TREE
- B: 40.2' TO UTILITY POLE
- C: 189.8' TO UTILITY POLE

MON 118

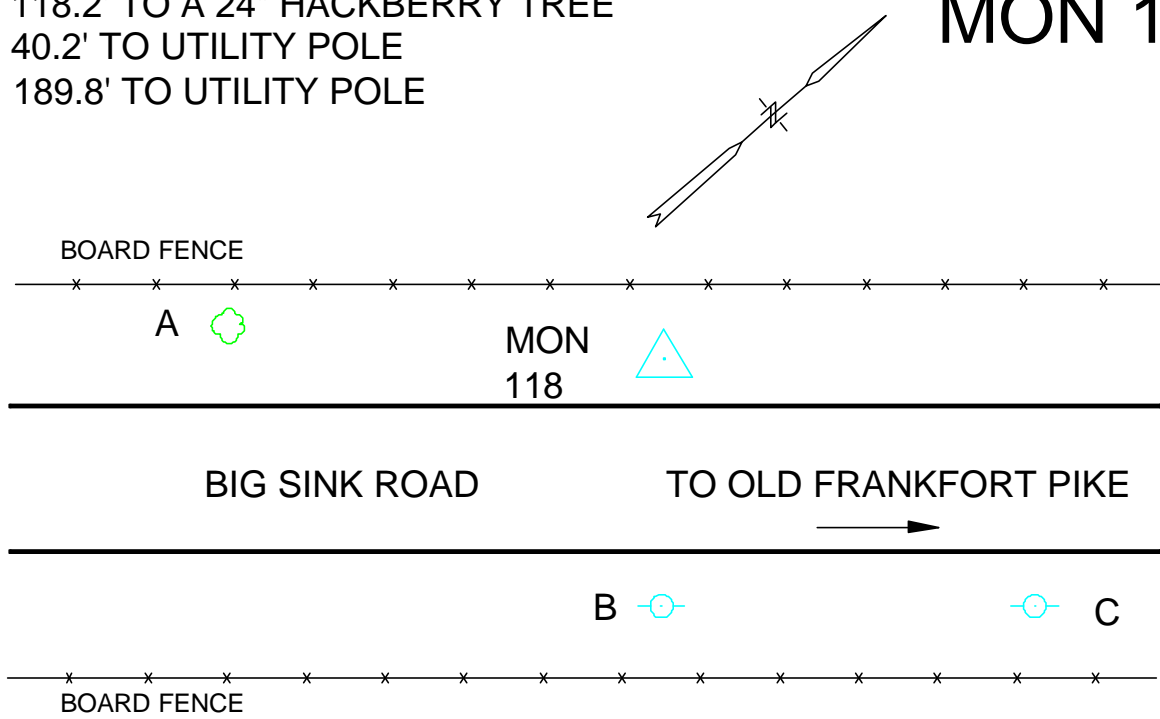




Photo Science, Inc.

CONTROL REFERENCE SUMMARY

Project Name: Woodford County GIS			Agency: VMWC Planning	
Quad Sheet: Versailles	County: Woodford	State: KY		Date Set: 2/5/2003
Station: 118A	Type of Mark: Concrete Monument	Stamping on Mark: 118AZ	Established By: Photo Science, Inc.	
Elev (FT): 880.24		Elev (M): 268.298		Datum: 1988
Northing (FT): 216,886.66		Easting (FT): 1,516,273.85		Datum: KY North
Northing (M): 66,107.187		Easting (M): 462,161.194		Datum: KY North
Latitude: 38°05'41.2113"		Longitude: 84°40'52.9366"		Datum: NAD 83
Ahead Station:		Ahead Bearing: ° " "		Ahead Distance:
Back Station: 118		Back Bearing: SW 56° 18 ' 11.9"		Back Distance: 599.7
Data Entry: GB		Checked By: MEM		Date: 5/19/2003

- A: 61.1' TO A 36" HACKBERRY TREE
- B: 84.8' TO A UTILITY POLE
- C: 100.1' TO A 4" MAPLE TREE

MON 118AZ

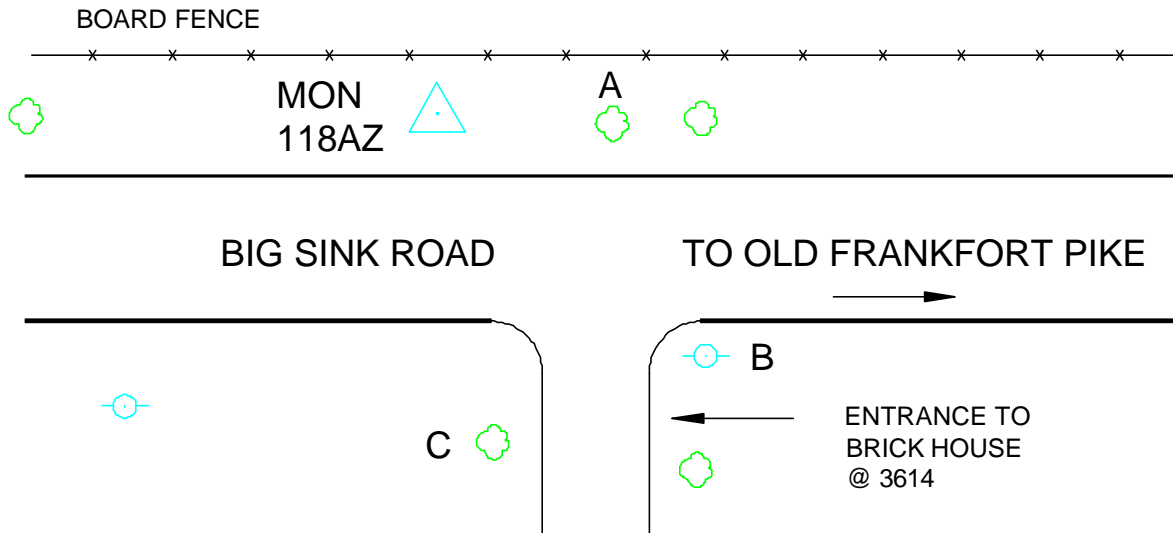
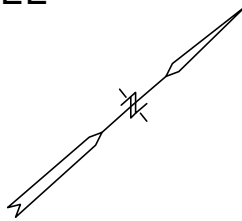




Photo Science, Inc.

CONTROL REFERENCE SUMMARY

Project Name: Woodford County GIS			Agency: VMWC Planning
Quad Sheet: Versailles	County: Woodford	State: KY	Date Set: 2/5/2003
Station: 119	Type of Mark: Concrete Monument	Stamping on Mark: 119	Established By: Photo Science, Inc.
Elev (FT): 899.09	Elev (M): 274.044	Datum: 1988	
Northing (FT): 222,625.41	Easting (FT): 1,514,711.11	Datum: KY North	
Northing (M): 67,856.362	Easting (M): 461,684.871	Datum: KY North	
Latitude: 38 °06'37.8697"	Longitude: 84 °41'12.8256"	Datum: NAD 83	
Ahead Station: 119 AZ	Ahead Bearing: SW 23 °00 " 15.4 "	Ahead Distance: 599.32	
Back Station:	Back Bearing: ° ' "	Back Distance:	
Data Entry: GB	Checked By: MEM	Date: 5/19/2003	

- A: 34.0' TO A TWIN HACKBERRY TREE
- B: 81.8' TO A 30" WALNUT TREE
- C: 47.7' TO A 30" WALNUT TREE

MON 119

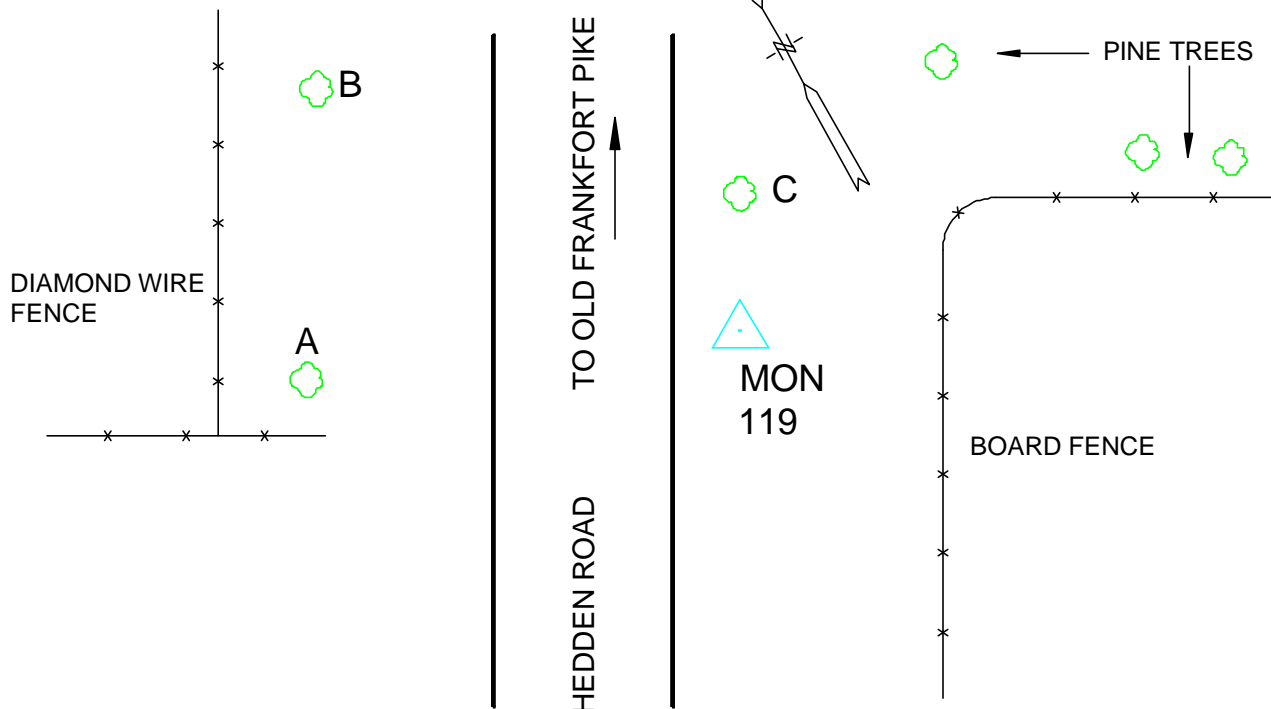




Photo Science, Inc.

CONTROL REFERENCE SUMMARY

Project Name: Woodford County GIS			Agency: VMWC Planning	
Quad Sheet: Versailles	County: Woodford	State: KY	Date Set: 2/5/2003	
Station: 119A	Type of Mark: Concrete Monument	Stamping on Mark: 119AZ	Established By: Photo Science, Inc.	
Elev (FT): 889.94	Elev (M): 271.253	Datum: 1988		
Northing (FT): 222,074.95	Easting (FT): 1,514,474.32	Datum: KY North		
Northing (M): 67,688.581	Easting (M): 461,612.695	Datum: KY North		
Latitude: 38°06'32.4169"	Longitude: 84°41'15.7555"	Datum: NAD 83		
Ahead Station:	Ahead Bearing: ° " "	Ahead Distance:		
Back Station: 119	Back Bearing: NE 23°00'15.4"	Back Distance: 599.32		
Data Entry: GB	Checked By: MEM	Date: 5/19/2003		

- A: 68.8' TO A 2" 4 PRONG MAPLE TREE
- B: 69.4' TO A 4" MAPLE TREE
- C: 143.6' TO A 24" HACKBERRY TREE

MON 119AZ

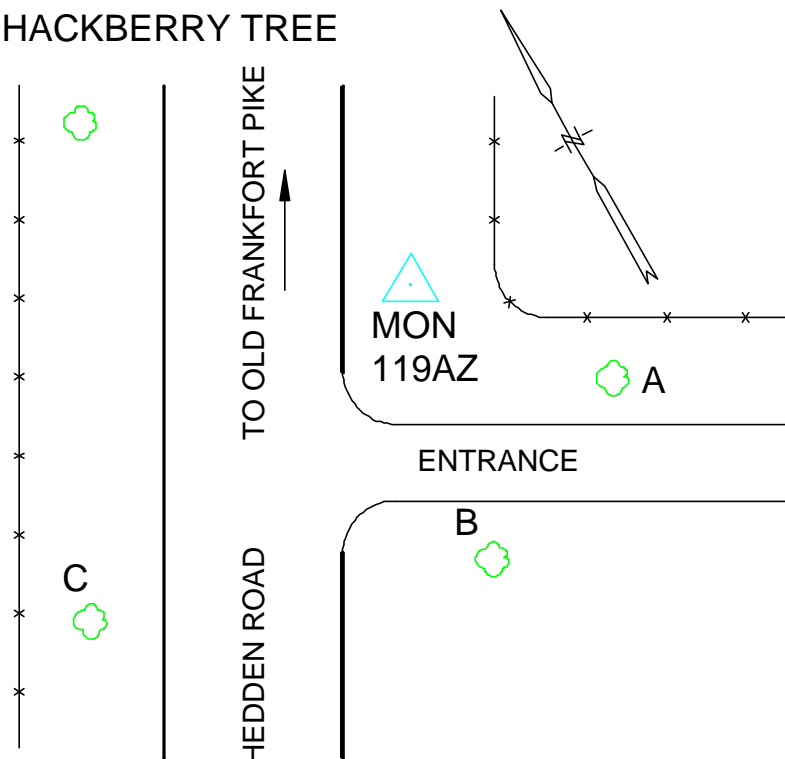




Photo Science, Inc.

CONTROL REFERENCE SUMMARY

Project Name: Woodford County GIS		Agency: VMWC Planning	
Quad Sheet: Tyrone	County: Woodford	State: KY	Date Set: 10/1/2004
Station: 120	Type of Mark: Concrete Monument	Stamping on Mark: 120	Established By: Photo Science, Inc.
Elev (USFeet) 793.97	Elev (M): 242.003	Datum: NAVD88	
Northing (USFeet) 196,785.85	Easting (USFeet) 1,481,191.65	Datum: KY North	
Northing (M) 59,980.447	Easting (M) 451,468.118	Datum: KY North	
Latitude: 38°02'20.64935"N	Longitude: 84°48'10.27086"W	Datum: NAD83	
Ahead Station:	Ahead Azimuth: ° ' "	Ahead Distance:	
Back Station: 120 AZ	Back Azimuth: 203 ° 25 ' 51 "	Back Distance: 577.78	
Data Entry: GB	Checked By: MEM	Date: 11/30/2004	

- A: 45.7' TO 24" WALNUT TREE
- B: 12.0' TO CULVERT
- C: 2.0' TO A CARSONITE POST

Point #120

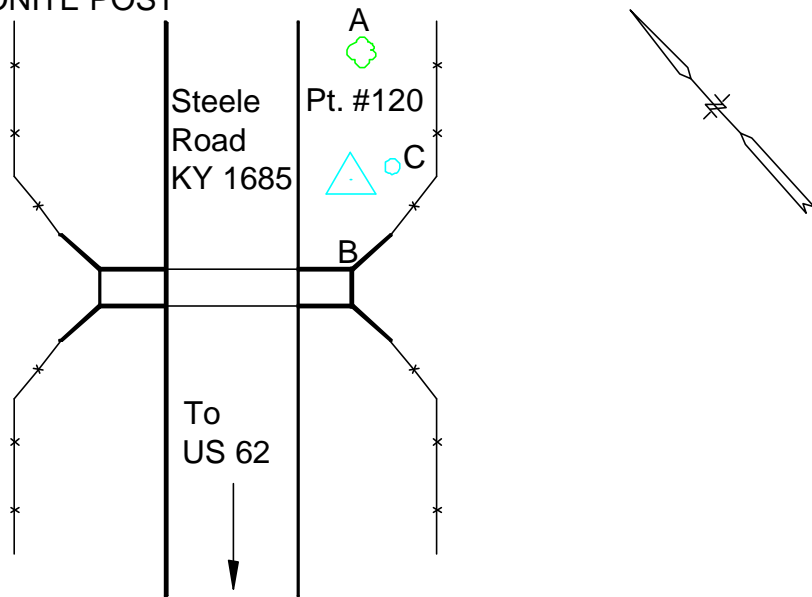




Photo Science, Inc.

CONTROL REFERENCE SUMMARY

Project Name: Woodford County GIS		Agency: VMWC Planning	
Quad Sheet: Tyrone	County: Woodford	State: KY	Date Set: 10/1/2004
Station: 120 AZ	Type of Mark: Concrete Monument	Stamping on Mark: 120 AZ	Established By: Photo Science, Inc.
Elev (USFeet) 813.22	Elev (M): 247.870	Datum: NAVD88	
Northing (USFeet) 196,255.71	Easting (USFeet) 1,480,961.90	Datum: KY North	
Northing (M) 59,818.860	Easting (M) 451,398.090	Datum: KY North	
Latitude: 38°02'15.39496"N	Longitude: 84°48'13.10272"W	Datum: NAD83	
Ahead Station: 120	Ahead Azimuth: 23 ° 25' 51 "	Ahead Distance: 577.78	
Back Station:	Back Azimuth: ° ' "	Back Distance:	
Data Entry: GB	Checked By: MEM	Date: 11/30/2004	

- A: 73.8' TO 36" HACKBERRY TREE
- B: 26.0' TO 24" WALNUT TREE
- C: 1.0' TO A CARSONITE POST

Point #120 AZ

