



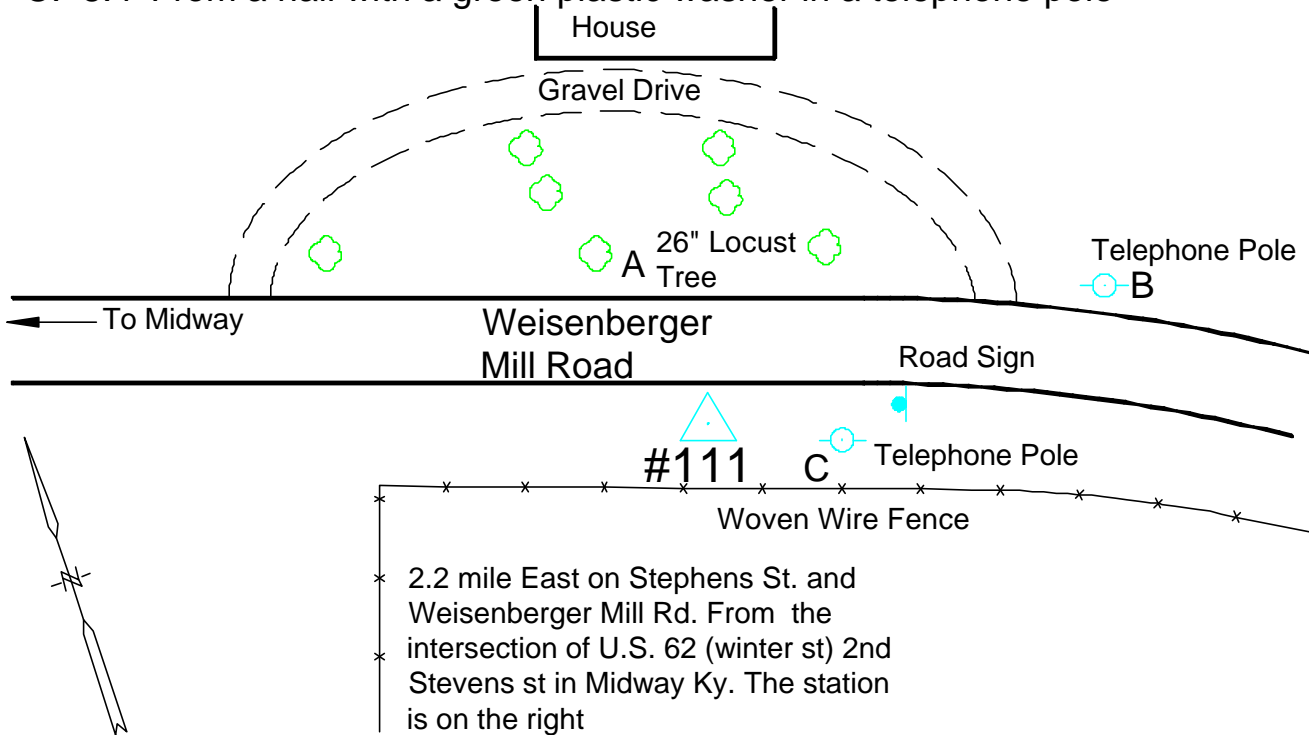
Photo Science, Inc.

CONTROL REFERENCE SUMMARY

Project Name: Woodford County GIS			Agency: VMWC Planning		
Quad Sheet: Midway		County: Woodford		State: KY	
Date Set: 2/1/2001		Type of Mark: Concrete Monument		Stamping on Mark: 111	
Station: 111		Established By: Photo Science, Inc.			
Elev (FT): 866.44		Elev (M): 264.091		Datum: 1988	
Northing (FT) 230,118.84		Easting (FT) 1,525,504.68		Datum: KY North	
Northing (M) 70,140.363		Easting (M) 464,974.756		Datum: KY North	
Latitude: 38°07'52.4314"		Longitude: 84°38'58.1851"		Datum: NAD 83	
Ahead Station: 111 AZ		Ahead Bearing SE 61°36'13.7"		Ahead Distance: 612.3	
Back Station:		Back Bearing ° ' "		Back Distance:	
Data Entry: GB		Checked By: MEM		Date: 6/25/2001	

- A: 29.6' from the near face of a 26" Locust tree
- B: 78.0' From a nail with a green plastic washer in a telephone pole
- C: 8.4' From a nail with a green plastic washer in a telephone pole

111



#111

Woven Wire Fence

2.2 mile East on Stephens St. and Weisenberger Mill Rd. From the intersection of U.S. 62 (winter st) 2nd Stevens st in Midway Ky. The station is on the right



Photo Science, Inc.

CONTROL REFERENCE SUMMARY

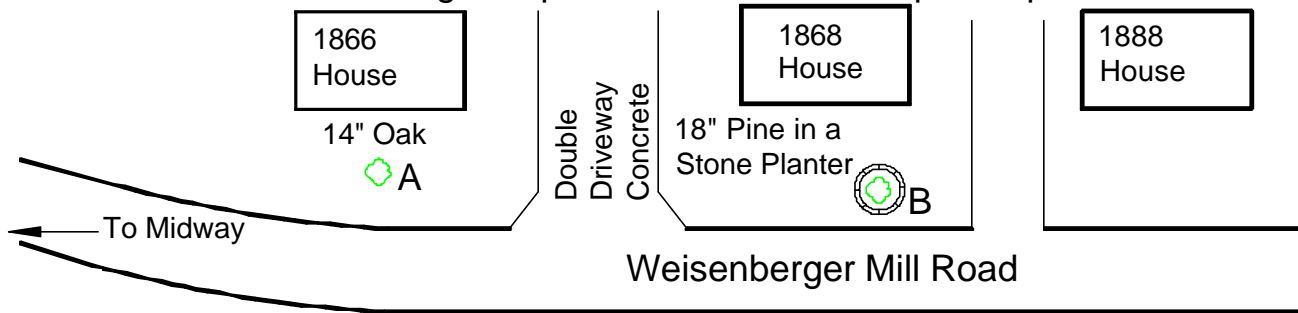
Project Name: Woodford County GIS			Agency: VMWC Planning		
Quad Sheet: Midway	County: Woodford	State: KY		Date Set: 2/1/2001	
Station: 111 AZ	Type of Mark: Concrete Monument	Stamping on Mark: 111 AZ		Established By: Photo Science, Inc.	
Elev (FT): 876.04		Elev (M): 267.019		Datum: 1988	
Northing (FT) 229,827.65		Easting (FT) 1,526,043.31		Datum: KY North	
Northing (M) 70,051.607		Easting (M) 465,138.931		Datum: KY North	
Latitude: 38°07'49.5758"		Longitude: 84°38'51.4282"		Datum: NAD 83	
Ahead Station:		Ahead Bearing ° ' "		Ahead Distance:	
Back Station: 111		Back Bearing NW 61° 36' 13.7 "		Back Distance: 612.3	
Data Entry: GB		Checked By: MEM		Date: 6/25/2001	

A: 70.2' From the near face of a 14" Oak Tree

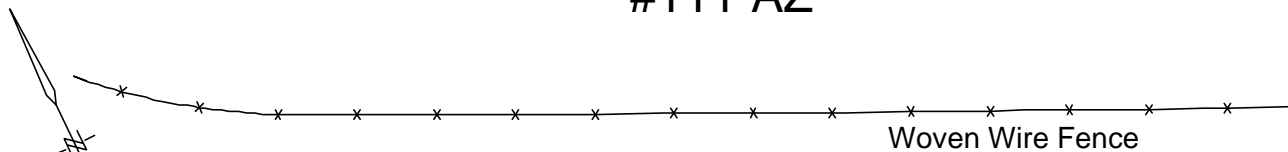
B: 48.0' From the near face of a 18" Pine tree in a stone planter

C: 7.6' From a nail with a green plastic washer in a telephone pole

111 AZ



#111 AZ C



2.33 mile East on Stephens St. and Weisenberger Mill Road From the intersection of Winter St. and Stevens St. in Midway Ky. The station is on the right



Photo Science, Inc.

CONTROL REFERENCE SUMMARY

Project Name: Woodford County GIS			Agency: VMWC Planning		
Quad Sheet: Midway	County: Woodford	State: KY		Date Set: 2/1/2001	
Station: 112	Type of Mark: Concrete Monument	Stamping on Mark: 112		Established By: Photo Science, Inc.	
Elev (FT): 824.18		Elev (M): 251.211		Datum: 1988	
Northing (FT) 236,780.48		Easting (FT) 1,517,273.79		Datum: KY North	
Northing (M) 72,170.833		Easting (M) 462,465.977		Datum: KY North	
Latitude: 38°08'57.9202"		Longitude: 84°40'41.5852"		Datum: NAD 83	
Ahead Station: 112 AZ		Ahead Bearing NW 10° 19' 05.2"		Ahead Distance: 772.92	
Back Station:		Back Bearing ° ' "		Back Distance:	
Data Entry: GB		Checked By: MEM		Date: 6/25/2001	

- A: 54.0' From the NW corner of the Pavillian Floor slab
- B: 44.8' From a nail with a green plastic cap in a power pole
- C: 38.2' From the near face of a 4" tulip tree

112

Northside School

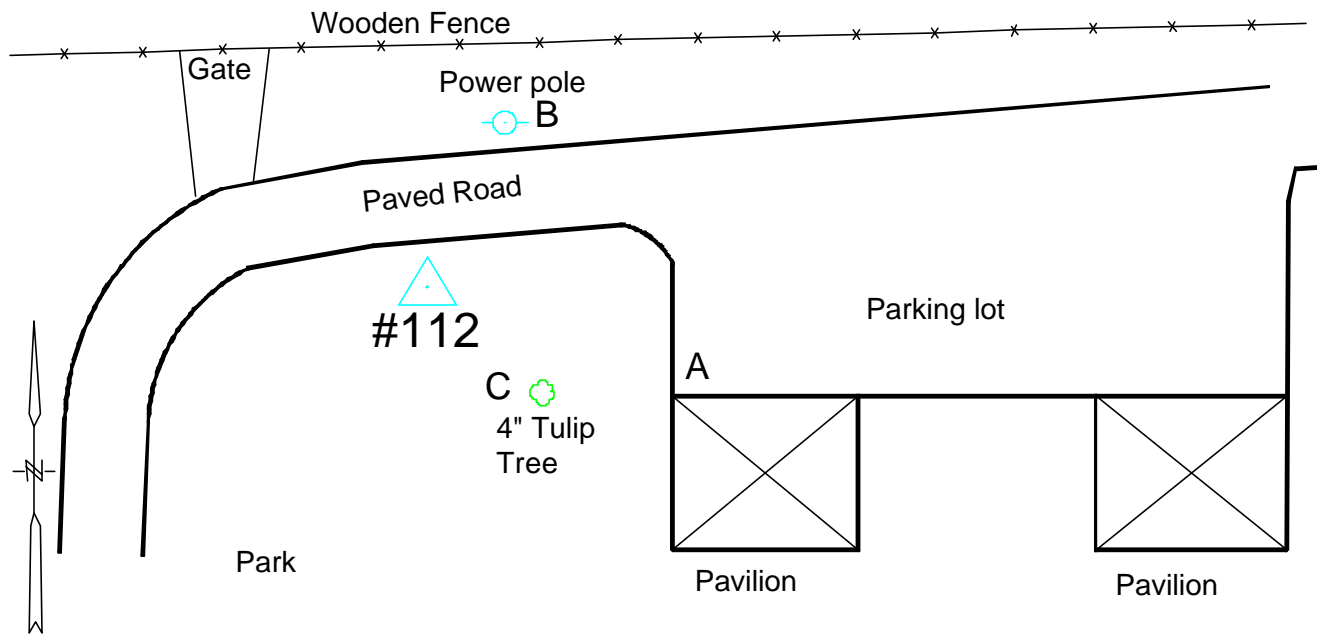




Photo Science, Inc.

CONTROL REFERENCE SUMMARY

Project Name: Woodford County GIS			Agency: VMWC Planning	
Quad Sheet: Midway	County: Woodford	State: KY	Date Set: 2/1/2001	
Station: 112 AZ	Type of Mark: Concrete Monument	Stamping on Mark: 112 AZ	Established By: Photo Science, Inc.	
Elev (FT): 840.86	Elev (M): 256.296	Datum: 1988		
Northing (FT) 237,540.90	Easting (FT) 1,517,135.35	Datum: KY North		
Northing (M) 72,402.611	Easting (M) 462,423.778	Datum: KY North		
Latitude: 38°09'05.4311"	Longitude: 84°40'43.3626"	Datum: NAD 83		
Ahead Station:	Ahead Bearing ° ' "	Ahead Distance:		
Back Station: 112	Back Bearing SE 10° 19' 05.2 "	Back Distance: 772.92		
Data Entry: GB	Checked By: MEM	Date: 6/25/2001		

A: 58.4' from a nail with a green plastic washer in a power pole
 B: 142.4' From a nail with a green plastic washer in a power pole
 C: 94.2' From the end fence post of wooden fence

112 AZ

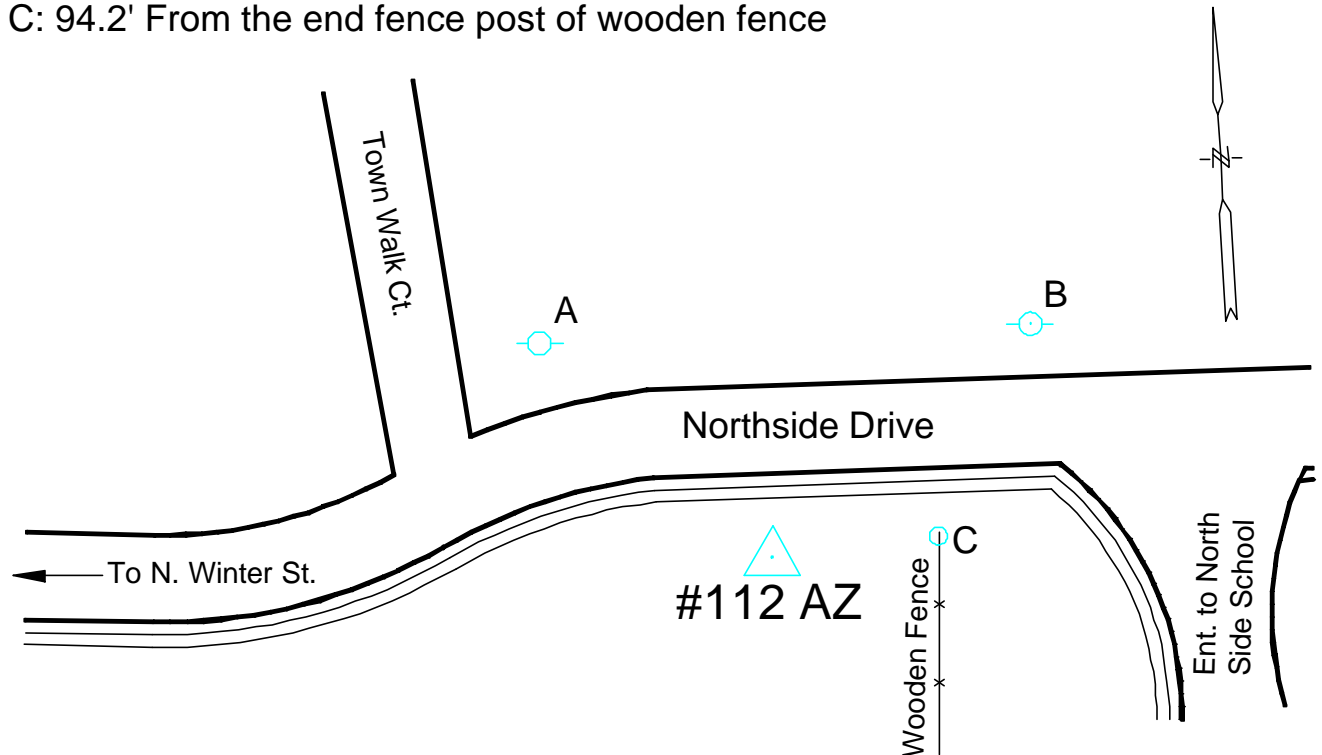




Photo Science, Inc.

CONTROL REFERENCE SUMMARY

Project Name: Woodford County GIS			Agency: VMWC Planning		
Quad Sheet: Midway	County: Woodford	State: KY		Date Set: 2/1/2001	
Station: 113	Type of Mark: Concrete Monument	Stamping on Mark: 113		Established By: Photo Science, Inc.	
Elev (FT): 826.79		Elev (M): 252.006		Datum: 1988	
Northing (FT) 240,242.76		Easting (FT) 1,525,366.21		Datum: KY North	
Northing (M) 73,226.141		Easting (M) 464,932.551		Datum: KY North	
Latitude: 38°09'32.5067"		Longitude: 84°39'00.4685"		Datum: NAD 83	
Ahead Station: 113 AZ		Ahead Bearing SE 82°24'22.3"		Ahead Distance: 456.45	
Back Station:		Back Bearing ° ' "		Back Distance:	
Data Entry: GB		Checked By: MEM		Date: 6/25/2001	

- A: 124.6' to the corner of the Barn
- B: 55.9' to the coner of the Barn
- C: 91.9' to the corner of the Barn
- D: 8.9' to a mag in the North edge of Moores Mill Road.

113

1.0 mile S.W. of the PI of Moores Mill Rd and US 421

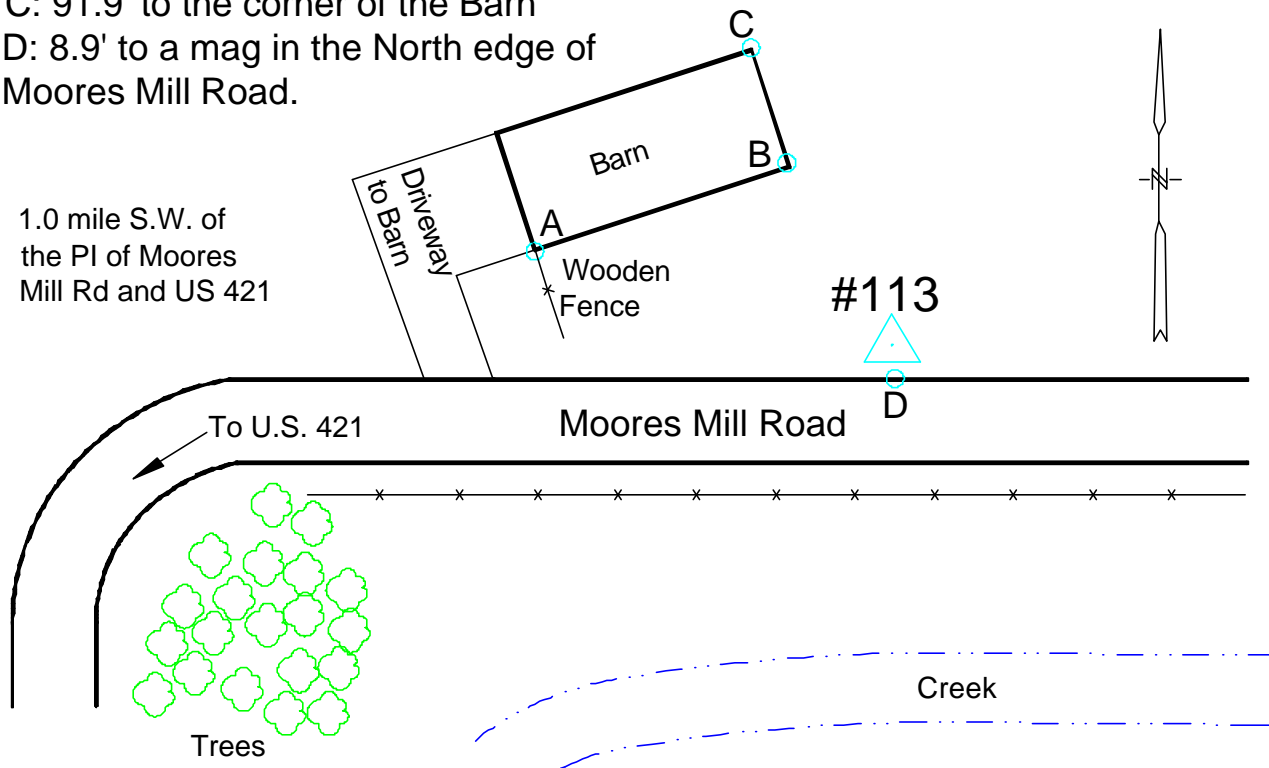




Photo Science, Inc.

CONTROL REFERENCE SUMMARY

Project Name: Woodford County GIS			Agency: VMWC Planning		
Quad Sheet: Midway	County: Woodford	State: KY		Date Set: 2/1/2001	
Station: 113 AZ	Type of Mark: Concrete Monument	Stamping on Mark: 113 AZ		Established By: Photo Science, Inc.	
Elev (FT): 822.19		Elev (M): 250.604		Datum: 1988	
Northing (FT) 240,182.44		Easting (FT) 1,525,818.66		Datum: KY North	
Northing (M) 73,207.753		Easting (M) 465,070.457		Datum: KY North	
Latitude: 38°09'31.9297"		Longitude: 84°38'54.8005"		Datum: NAD 83	
Ahead Station:		Ahead Bearing ° ' "		Ahead Distance:	
Back Station: 113		Back Bearing NW 82° 24' 22.3 "		Back Distance: 456.45	
Data Entry: GB		Checked By: MEM		Date: 6/25/2001	

- A: 112.0' to the near face of a twin 24' and 18" Hackberry Tree **113AZ**
 B: 105.2' to the near face of a 4" Hackberry Tree East most tree of group.
 C: 119.1' to the near face of a 14" Wild Cherry Tree
 D: 119.1' from a mag nail in the North edge of Moores Mill Road
 1.1 miles SW to the PI of Moores Mill Road and U.S. 421

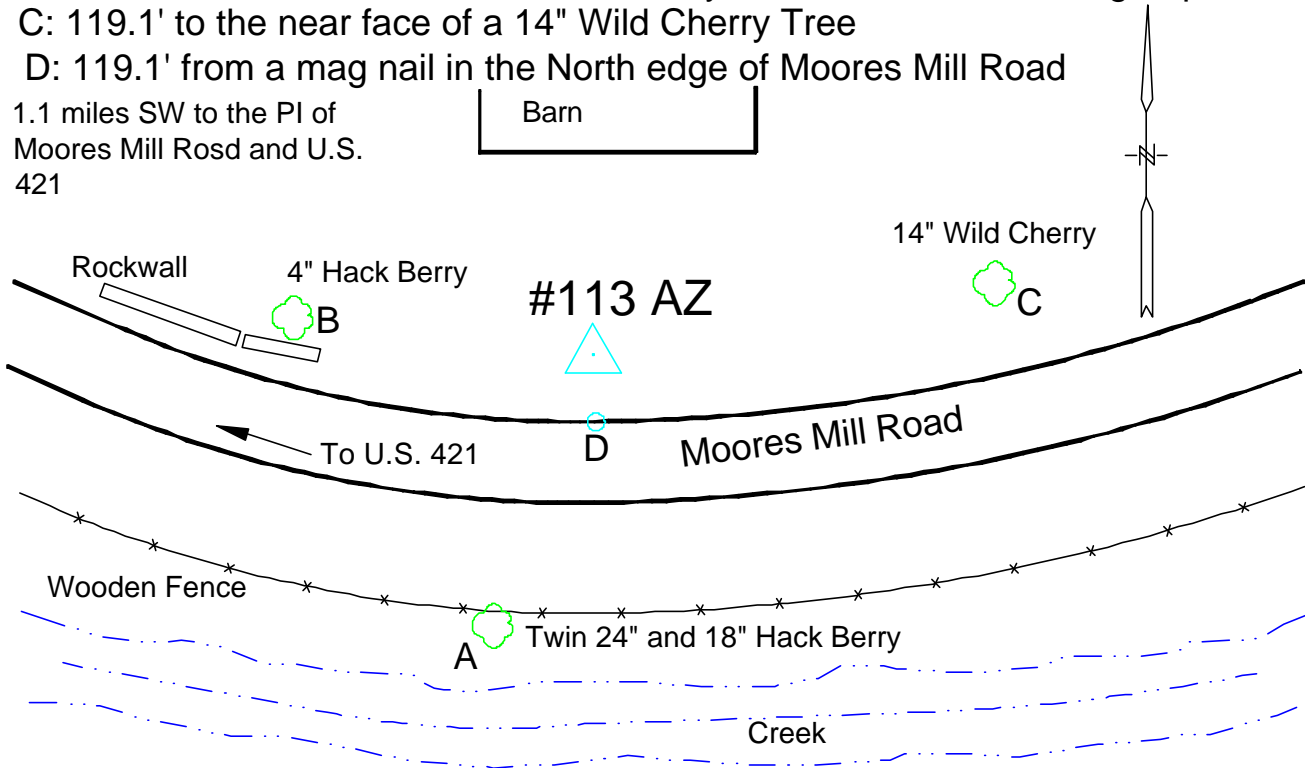




Photo Science, Inc.

CONTROL REFERENCE SUMMARY

Project Name: Woodford County GIS			Agency: VMWC Planning	
Quad Sheet: Midway	County: Woodford	State: KY	Date Set: 2/1/2001	
Station: 114	Type of Mark: Concrete Monument	Stamping on Mark: 114	Established By: Photo Science, Inc.	
Elev (FT): 842.09	Elev (M): 256.671	Datum: 1988		
Northing (FT) 242,664.38	Easting (FT) 1,510,146.76	Datum: KY North		
Northing (M) 73,964.250	Easting (M) 460,293.652	Datum: KY North		
Latitude: 38°09'55.7489"	Longitude: 84°42'11.1672"	Datum: NAD 83		
Ahead Station: 114 AZ	Ahead Bearing SE 73°07'47.1"	Ahead Distance: 797.81		
Back Station:	Back Bearing ° ' "	Back Distance:		
Data Entry: GB	Checked By: MEM	Date: 6/25/2001		

- A: 107.9' From a nail with a green plastic washer in a power pole
- B: 23.6' From the woven wire on the North side U.S. 421
- C: 142.8' from the East most gate post in the woven wire fence on the South side U.S. 421

114

1.15 mile West of the
PI I-64 and US 421

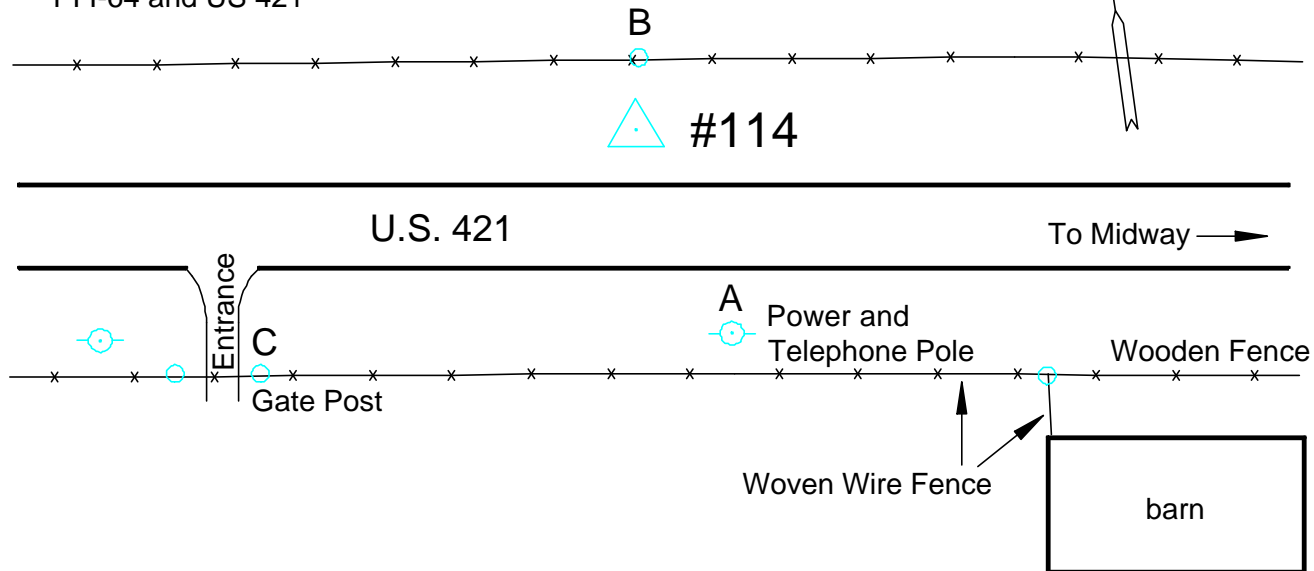




Photo Science, Inc.

CONTROL REFERENCE SUMMARY

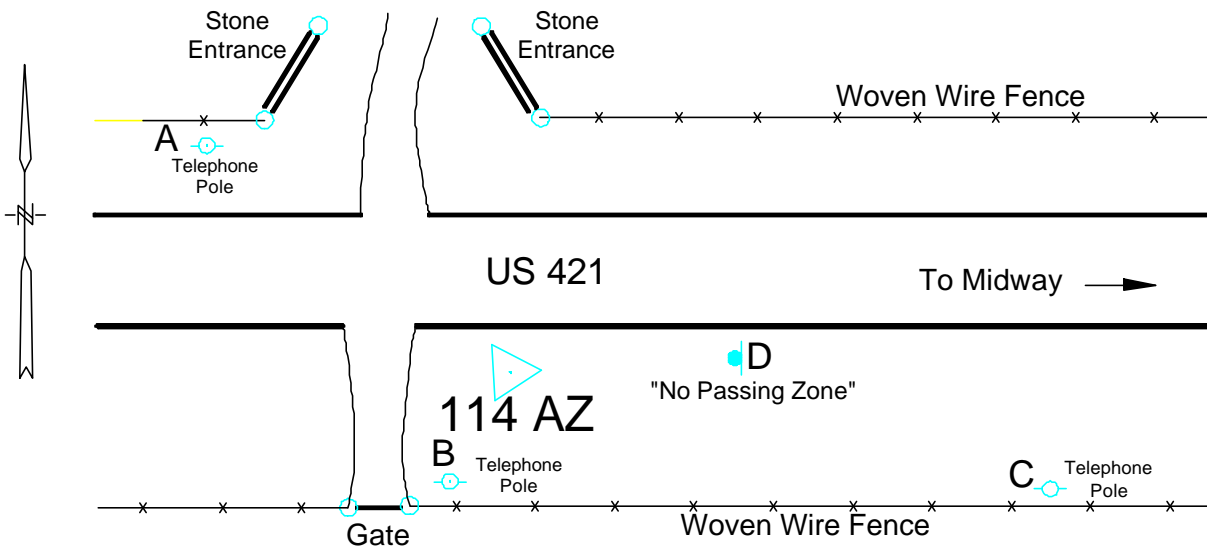
Project Name: Woodford County GIS			Agency: VMWC Planning	
Quad Sheet: Midway	County: Woodford	State: KY	Date Set: 2/1/2001	
Station: 114 AZ	Type of Mark: Concrete Monument	Stamping on Mark: 114 AZ	Established By: Photo Science, Inc.	
Elev (FT): 842.35	Elev (M): 256.748	Datum: 1988		
Northing (FT) 242,432.85	Easting (FT) 1,510,910.24	Datum: KY North		
Northing (M) 73,893.681	Easting (M) 460,526.361	Datum: KY North		
Latitude: 38°09'53.4972"	Longitude: 84°42'01.5933"	Datum: NAD 83		
Ahead Station:	Ahead Bearing ° ' "	Ahead Distance:		
Back Station: 114	Back Bearing NW 73°07'47.1"	Back Distance: 797.81		
Data Entry: GB	Checked By: MEM	Date: 6/25/2001		

A: 124.9' from a nail with a green plastic washer in a telephone pole

B: 86.8' from a nail with a green plastic washer in a telephone pole

C: 148.9' from a nail with a green plastic washer in a telephone pole

D: 31.3' from the North leg of a Road Sign- "No Passing Zone" **114 AZ**



1.0 mile West of the P.I. I-64 & US 421



Photo Science, Inc.

CONTROL REFERENCE SUMMARY

Project Name: Woodford County GIS			Agency: VMWC Planning	
Quad Sheet: Versailles	County: Woodford	State: KY	Date Set: 2/5/2003	
Station: 115	Type of Mark: Concrete Monument	Stamping on Mark: 115	Established By: Photo Science, Inc.	
Elev (FT): 907.31	Elev (M): 276.548	Datum: 1988		
Northing (FT): 196,559.57	Easting (FT): 1,498,032.77	Datum: KY North		
Northing (M): 59,911.477	Easting (M): 456,601.300	Datum: KY North		
Latitude: 38 °02'19.3589"	Longitude: 84 °44'39.7504"	Datum: NAD 83		
Ahead Station: 115 AZ	Ahead Bearing: SW 36 °06" 29.8 "	Ahead Distance: 608.33		
Back Station:	Back Bearing: ° ' "	Back Distance:		
Data Entry: GB	Checked By: MEM	Date: 5/19/2003		

- A: 18.7' TO SOUTH BRACE POST
- B: 22.1' TO NORTH BRACE POST
- C: 158.0' TO STOCKADE FENCE CORNER

MON 115

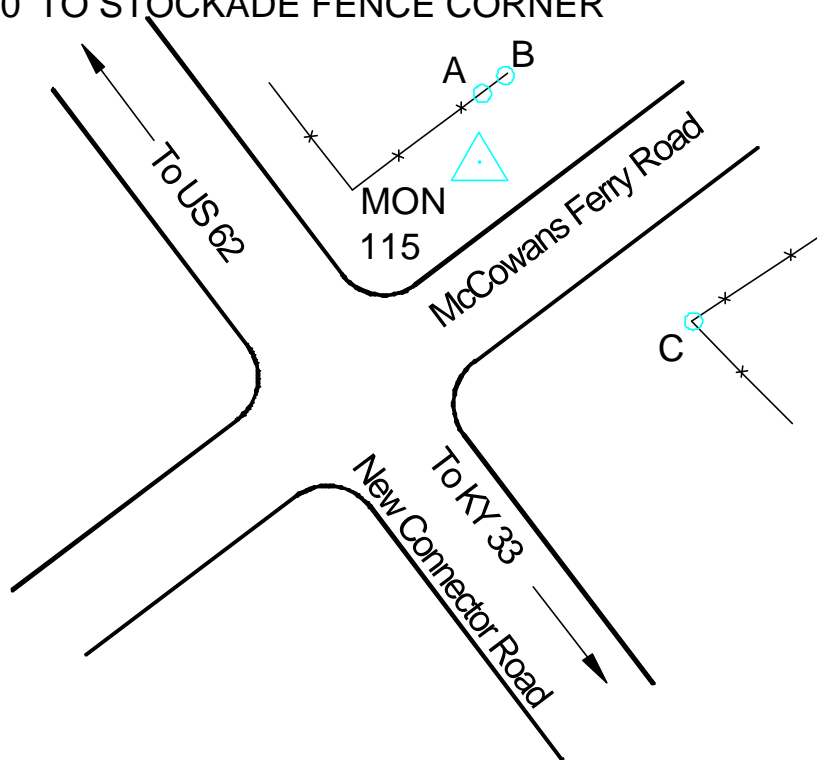




Photo Science, Inc.

CONTROL REFERENCE SUMMARY

Project Name: Woodford County GIS			Agency: VMWC Planning
Quad Sheet: Versailles	County: Woodford	State: KY	Date Set: 2/5/2003
Station: 115A	Type of Mark: Concrete Monument	Stamping on Mark: 115AZ	Established By: Photo Science, Inc.
Elev (FT): 897.31	Elev (M): 273.501	Datum: 1988	
Northing (FT): 196,070.12	Easting (FT): 1,497,671.69	Datum: KY North	
Northing (M): 59,762.291	Easting (M): 456,491.246	Datum: KY North	
Latitude: 38°02'14.5012"	Longitude: 84°44'44.2307"	Datum: NAD 83	
Ahead Station:	Ahead Bearing: ° " "	Ahead Distance:	
Back Station: 115	Back Bearing: NE 36°06'29.8"	Back Distance: 608.33	
Data Entry: GB	Checked By: MEM	Date: 5/19/2003	

- A: 23.0' TO NEW ROCK FENCE
- B: 80.2' TO GAS LINE MARKER
- C: 188.5' TO C/L DRAIN PIPE

MON 115 AZ

