



Photo Science, Inc.

CONTROL REFERENCE SUMMARY

Project Name: Woodford County GIS			Agency: VMWC Planning	
Quad Sheet: Versailles	County: Woodford	State: KY		Date Set: 2/1/2001
Station: 106	Type of Mark: Concrete Monument	Stamping on Mark: 106		Established By: Photo Science, Inc.
Elev (FT): 901.38		Elev (M): 274.742		Datum: 1988
Northing (FT) 203,937.74		Easting (FT) 1,504,840.44		Datum: KY North
Northing (M) 62,160.349		Easting (M) 458,676.283		Datum: KY North
Latitude: 38°03'32.6494"		Longitude: 84°43'15.1298"		Datum: NAD 83
Ahead Station: 106 AZ		Ahead Bearing NE 58°25'21.7"		Ahead Distance: 661.59
Back Station:		Back Bearing ° ' "		Back Distance:
Data Entry: GB		Checked By: MEM		Date: 6/25/2001

- A: 12.3' mag nail in E.O.M.
- B: 27.0' chain link fence corner
- C: 35.0' chain link fence corner at parking lot

106

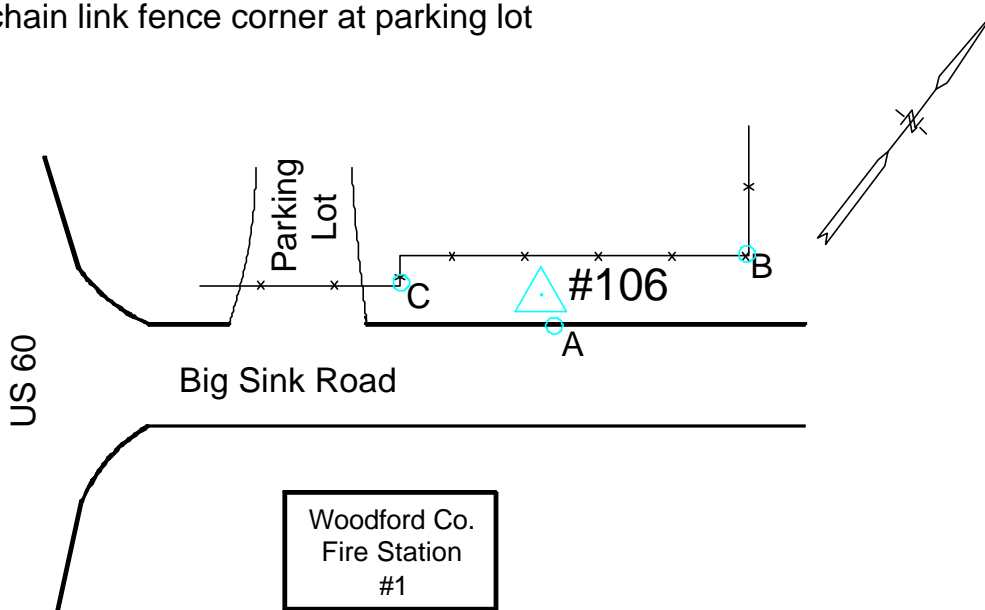




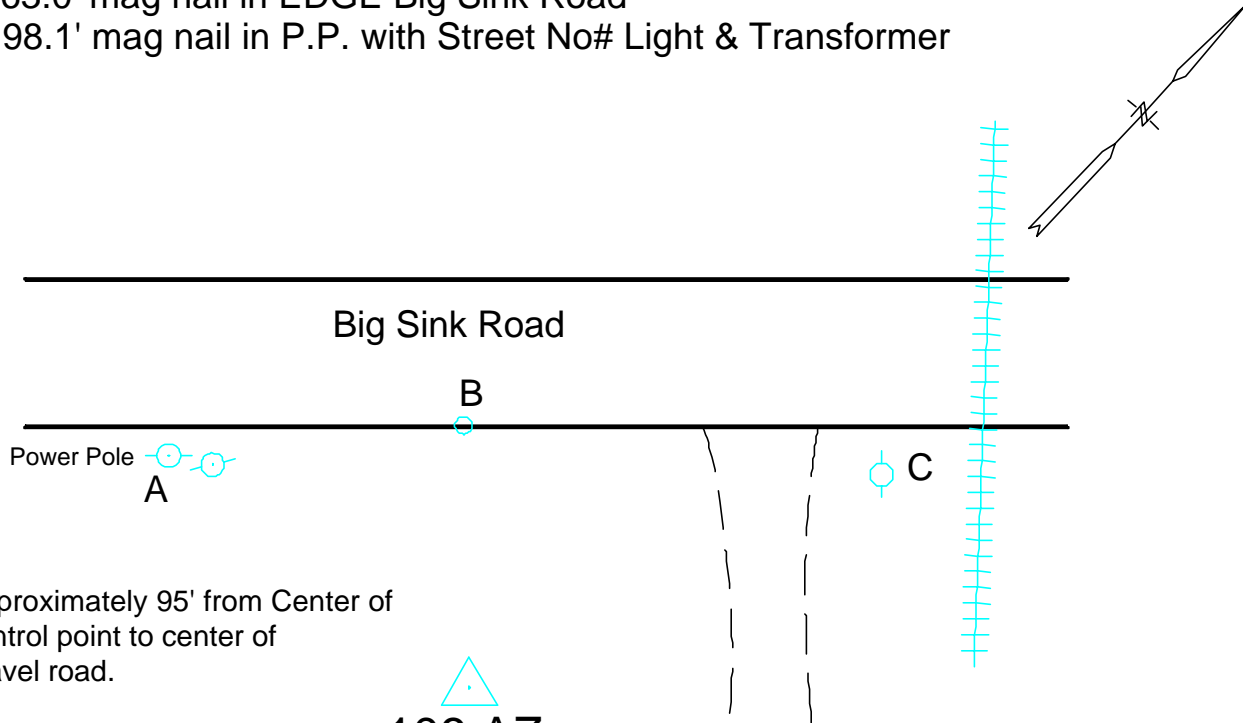
Photo Science, Inc.

CONTROL REFERENCE SUMMARY

Project Name: Woodford County GIS			Agency: VMWC Planning		
Quad Sheet: Versailles	County: Woodford		State: KY		Date Set: 2/1/2001
Station: 106 AZ	Type of Mark: Concrete Monument		Stamping on Mark: 106 AZ		Established By: Photo Science, Inc.
Elev (FT): 900.32		Elev (M): 274.418		Datum: 1988	
Northing (FT) 204,284.18		Easting (FT) 1,505,404.07		Datum: KY North	
Northing (M) 62,265.942		Easting (M) 458,848.078		Datum: KY North	
Latitude: 38°03'36.1026"		Longitude: 84°43'08.1048"		Datum: NAD 83	
Ahead Station:		Ahead Bearing ° ' "		Ahead Distance:	
Back Station: 106		Back Bearing SW 58° 25' 21.7 "		Back Distance: 661.59	
Data Entry: GB		Checked By: MEM		Date: 6/25/2001	

- A: 90.1' mag nail in P.P. No#
- B: 63.0' mag nail in EDGE Big Sink Road
- C: 98.1' mag nail in P.P. with Street No# Light & Transformer

106 AZ



Approximately 95' from Center of control point to center of gravel road.

106 AZ



Photo Science, Inc.

CONTROL REFERENCE SUMMARY

Project Name: Woodford County GIS			Agency: VMWC Planning
Quad Sheet: Versailles	County: Woodford	State: KY	Date Set: 2/1/2001
Station: 107	Type of Mark: Concrete Monument	Stamping on Mark: 107	Established By: Photo Science, Inc.
Elev (FT): 929.46	Elev (M): 283.301	Datum: 1988	
Northing (FT) 195,292.79	Easting (FT) 1,503,854.31	Datum: KY North	
Northing (M) 59,525.361	Easting (M) 458,375.711	Datum: KY North	
Latitude: 38°02'07.1385"	Longitude: 84°43'26.9028"	Datum: NAD 83	
Ahead Station: 107 AZ	Ahead Bearing SW 07° 26' 49.5"	Ahead Distance: 905.19	
Back Station:	Back Bearing ° ' "	Back Distance:	
Data Entry: GB	Checked By: MEM	Date: 6/25/2001	

- A: 92.9' 24" CMP North End
- B: 81.1' mag nail in Telephone Pole #19
- C: 75.9' mag nail in Light Pole

107

From P.I. HWY 33 and BG PRKWY
North 0.70 mi. to STA. Rt.

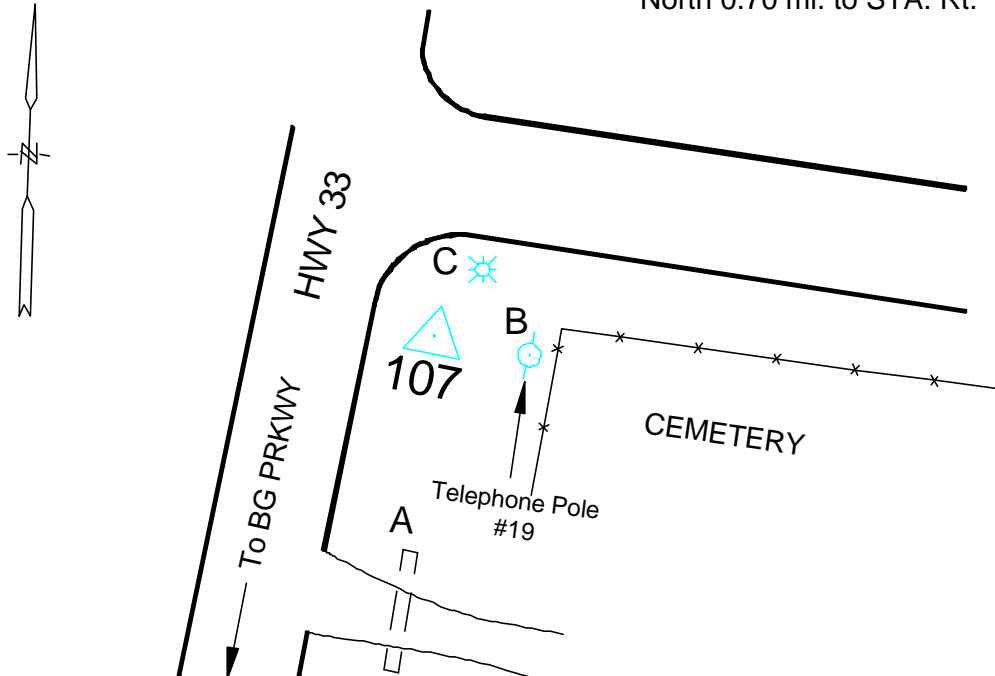




Photo Science, Inc.

CONTROL REFERENCE SUMMARY

Project Name: Woodford County GIS			Agency: VMWC Planning		
Quad Sheet: Versailles		County: Woodford		State: KY	
Date Set: 2/1/2001		Station: 107 AZ		Type of Mark: Concrete Monument	
Stamping on Mark: 107 AZ		Established By: Photo Science, Inc.		Elev (FT): 929.34	
Elev (M): 283.263		Datum: 1988		Northing (FT) 194,395.21	
Datum: KY North		Easting (FT) 1,503,737.16		Northing (M) 59,251.779	
Datum: KY North		Easting (M) 458,340.003		Latitude: 38°01'58.2594"	
Datum: NAD 83		Longitude: 84°43'28.3093"		Ahead Station:	
Ahead Bearing ° ' "		Ahead Distance:		Back Station: 107	
Back Bearing NE 07°26'49.5"		Back Distance: 905.19		Data Entry: GB	
Checked By: MEM		Date: 11/30/2004			

- A: 43.6' Mail Box @ 1470
- B: 36.3' Center Line Water Meter
- C: 58.2' R/W Concrete Marker @ Telephone Pole

107 AZ

From P.I. HWY 33 &
BG PRKWY North
0.55 mi. to STA. @ Rt.

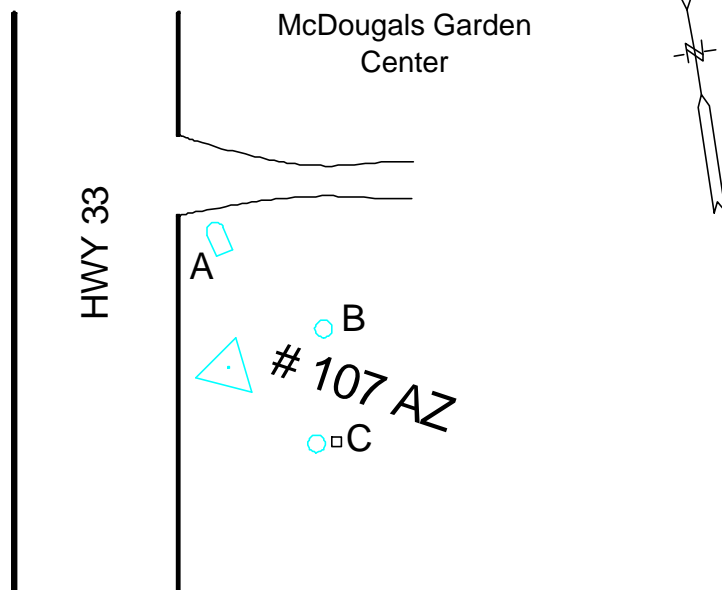




Photo Science, Inc.

CONTROL REFERENCE SUMMARY

Project Name: Woodford County GIS			Agency: VMWC Planning		
Quad Sheet: Versailles		County: Woodford		State: KY	
Date Set: 2/1/2001		Type of Mark: Concrete Monument		Stamping on Mark: 108	
Station: 108		Established By: Photo Science, Inc.			
Elev (FT): 942.54		Elev (M): 287.287		Datum: 1988	
Northing (FT) 190,007.44		Easting (FT) 1,509,280.90		Datum: KY North	
Northing (M) 57,914.384		Easting (M) 460,029.738		Datum: KY North	
Latitude: 38°01'15.1600"		Longitude: 84°42'18.7502"		Datum: NAD 83	
Ahead Station: 108 AZ		Ahead Bearing SE 36° 14 ' 33.6 "		Ahead Distance: 510.09	
Back Station:		Back Bearing ° ' "		Back Distance:	
Data Entry: GB		Checked By: MEM		Date: 6/25/2001	

- A: 3.1' mag nail in fence post
- B: 40.2' sign post "Starle Farm"
- C: 31.1' centerline mail box @ 1211 Dry Ridge Rd.

108

Approximatly 1.2 miles
from PI w/HWY 33 and Dry
Ridge Road. to STA. @ left

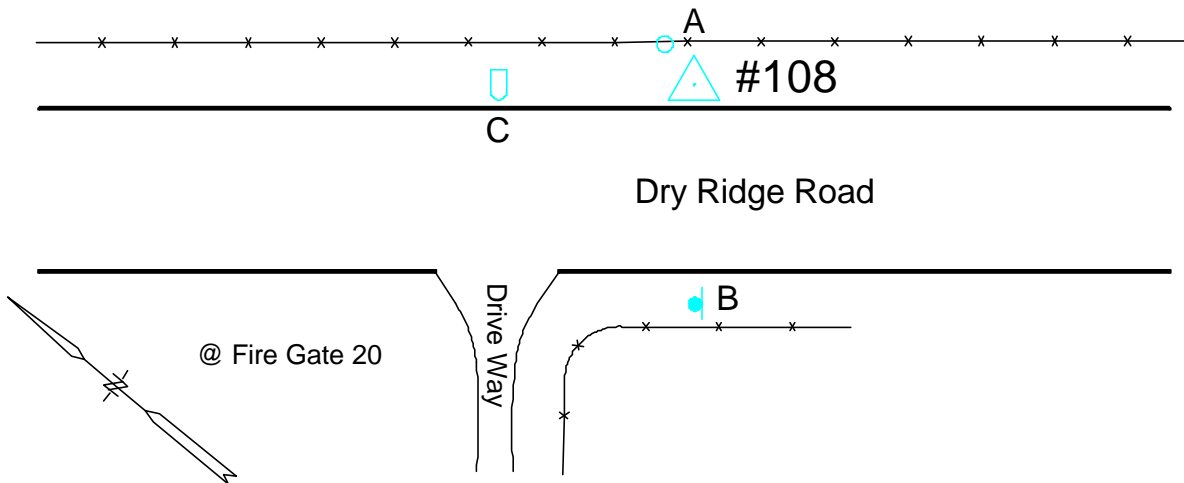




Photo Science, Inc.

CONTROL REFERENCE SUMMARY

Project Name: Woodford County GIS			Agency: VMWC Planning		
Quad Sheet: Versailles		County: Woodford		State: KY	
Date Set: 2/1/2001		Station: 108 AZ		Type of Mark: Concrete Monument	
Stamping on Mark: 108 AZ		Established By: Photo Science, Inc.		Elev (FT): 948.95	
Elev (M): 289.242		Datum: 1988		Northing (FT) 189,596.04	
Datum: KY North		Easting (FT) 1,509,582.47		Northing (M) 57,788.987	
Datum: KY North		Easting (M) 460,121.657		Latitude: 38°01'11.1077"	
Datum: NAD 83		Longitude: 84°42'14.9563"		Ahead Station:	
Ahead Bearing ° ' "		Ahead Distance:		Back Station: 108	
Back Bearing NW 36° 14' 33.6 "		Back Distance: 510.09		Data Entry: GB	
Checked By: MEM		Date: 6/25/2001			

- A: 4.7' mag nail in fence post
- B: 53.0' mag nail in 10" maple tree
- C: 67.0' "fire gate 19" post and sign

Approximatly 1.3 miles
from PI w/HWY 33 and Dry
Ridge Road.

108 AZ

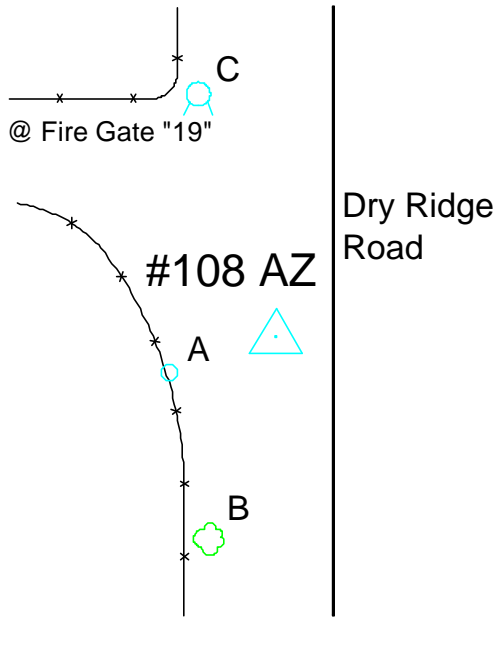




Photo Science, Inc.

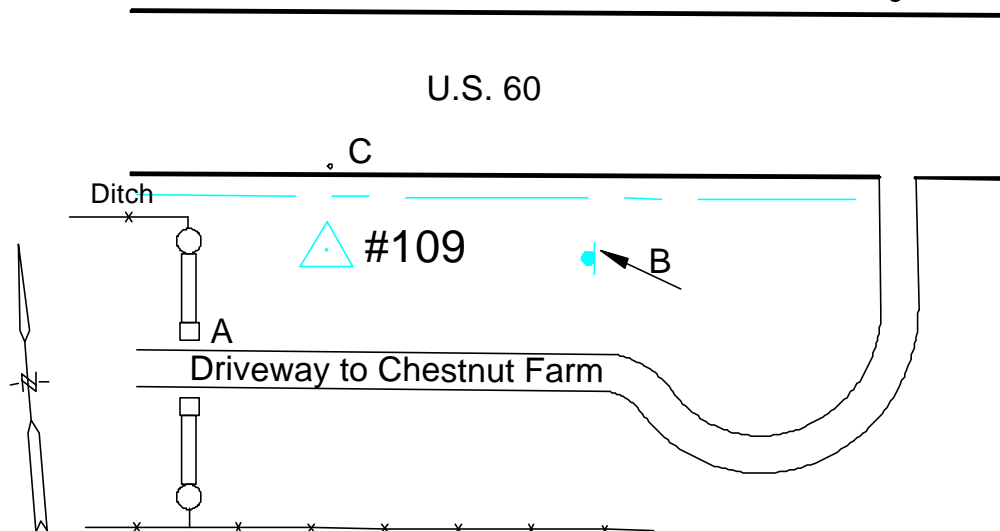
CONTROL REFERENCE SUMMARY

Project Name: Woodford County GIS			Agency: VMWC Planning		
Quad Sheet: Versailles		County: Woodford		State: KY	
Date Set: 2/1/2001		Type of Mark: Concrete Monument		Stamping on Mark: 109	
Station: 109		Established By: Photo Science, Inc.			
Elev (FT): 967.40		Elev (M): 294.865		Datum: 1988	
Northing (FT) 198,867.66		Easting (FT) 1,518,674.97		Datum: KY North	
Northing (M) 60,614.983		Easting (M) 462,893.057		Datum: KY North	
Latitude: 38°02'43.1918"		Longitude: 84°40'21.8662"		Datum: NAD 83	
Ahead Station: 109 AZ		Ahead Bearing SE 73° 34 ' 20.7 "		Ahead Distance: 508.27	
Back Station:		Back Bearing ° ' "		Back Distance:	
Data Entry: GB		Checked By: MEM		Date: 6/25/2001	

- A: 50.0' S.E. Corner Rock ent. Column North Side Drive
- B: 78.3' post of sign "Chestnut Farm" North end of sign
- C: 22.0' mag nail in shoulder of U.S. 60

109

Approximately
0.40m: East along
U.S. 60 from Blue
Grass Prkwy
overpass to STA.
@ right





CONTROL REFERENCE SUMMARY

Project Name: Woodford County GIS			Agency: VMWC Planning		
Quad Sheet: Versailles		County: Woodford		State: KY	
Date Set: 2/1/2001		Type of Mark: Concrete Monument		Stamping on Mark: 109 AZ	
Station: 109 AZ		Established By: Photo Science, Inc.			
Elev (FT): 962.31		Elev (M): 293.312		Datum: 1988	
Northing (FT) 198,723.92		Easting (FT) 1,519,162.49		Datum: KY North	
Northing (M) 60,571.173		Easting (M) 463,041.652		Datum: KY North	
Latitude: 38°02'41.7929"		Longitude: 84°40'15.7637"		Datum: NAD 83	
Ahead Station:		Ahead Bearing ° ' "		Ahead Distance:	
Back Station: 109		Back Bearing NW 73° 34' 20.7 "		Back Distance: 508.27	
Data Entry: GB		Checked By: MEM		Date: 6/25/2001	

- A: 43.6' mag nail in pavement @ edge shoulder.
- B: 65.3' mag nail in guy wire pole
- C: 26.9' center line of GTE MH cover

109 AZ

Approximately 0.50
mile from bridge over
U.S.-60 @ BlueGrass
Prkwy to Sta. @ right

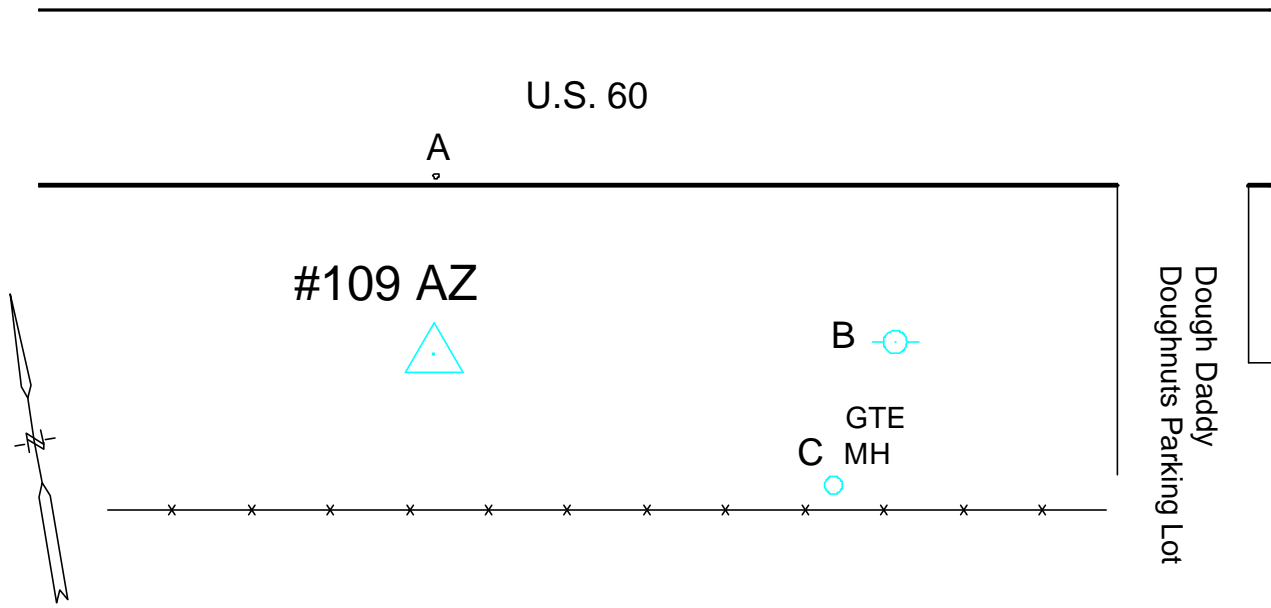




Photo Science, Inc.

CONTROL REFERENCE SUMMARY

Project Name: Woodford County GIS			Agency: VMWC Planning		
Quad Sheet: Midway		County: Woodford		State: KY	
Date Set: 2/1/2001		Type of Mark: Concrete Monument		Stamping on Mark: 110	
Station: 110		Established By: Photo Science, Inc.			
Elev (FT): 854.42		Elev (M): 260.428		Datum: 1988	
Northing (FT) 232,602.62		Easting (FT) 1,513,431.98		Datum: KY North	
Northing (M) 70,897.419		Easting (M) 461,294.991		Datum: KY North	
Latitude: 38°08'16.4402"		Longitude: 84°41'29.4281"		Datum: NAD 83	
Ahead Station: 110 AZ		Ahead Bearing SW 22° 22' 29.4"		Ahead Distance: 706.92	
Back Station:		Back Bearing ° ' "		Back Distance:	
Data Entry: GB		Checked By: MEM		Date: 6/25/2001	

- A: 12.9' from the near face of a telephone pole
- B: 35.6' from the near face of a 6" Ash Tree
- C: 88.3' from the NE Corner of a stone Mail Box "5539"

110

1.1 Miles NE of the PI Old Frankfort Pike and U.S. 62

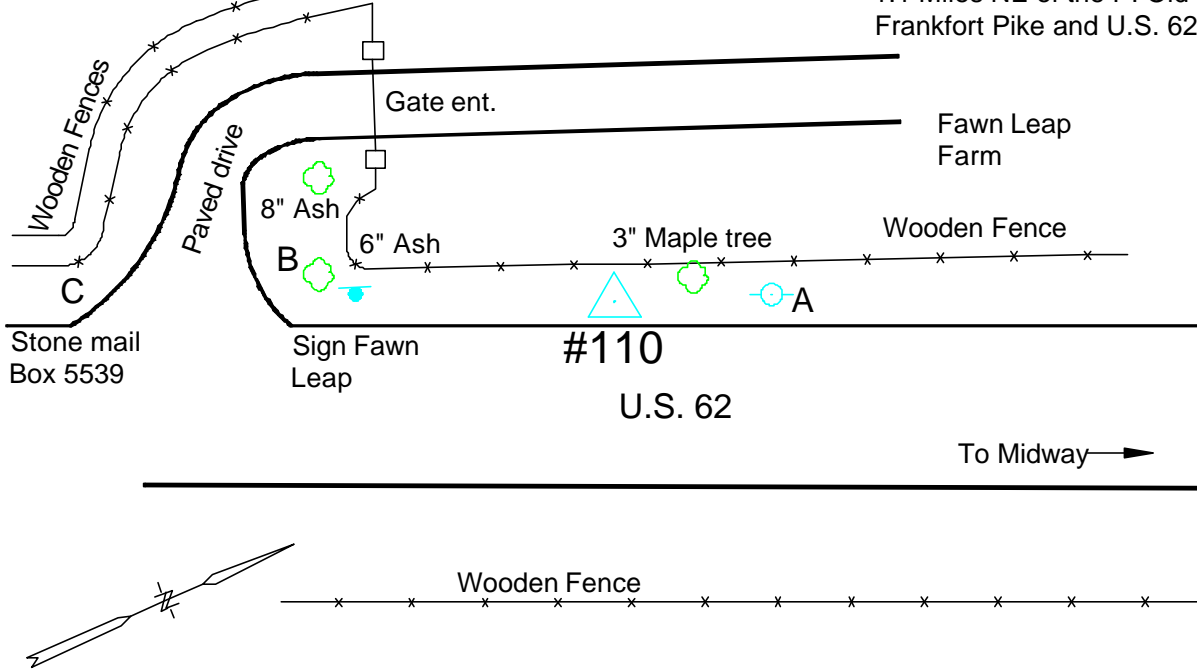




Photo Science, Inc.

CONTROL REFERENCE SUMMARY

Project Name: Woodford County GIS			Agency: VMWC Planning	
Quad Sheet: Midway	County: Woodford	State: KY	Date Set: 2/1/2001	
Station: 110 AZ	Type of Mark: Concrete Monument	Stamping on Mark: 110 AZ	Established By: Photo Science, Inc.	
Elev (FT): 865.64	Elev (M): 263.847	Datum: 1988		
Northing (FT) 231,948.92	Easting (FT) 1,513,162.88	Datum: KY North		
Northing (M) 70,698.171	Easting (M) 461,212.967	Datum: KY North		
Latitude: 38°08'09.9652"	Longitude: 84°41'32.7571"	Datum: NAD 83		
Ahead Station:	Ahead Bearing ° ' "	Ahead Distance:		
Back Station: 110	Back Bearing NE 22° 22' 29.4 "	Back Distance: 706.92		
Data Entry: GB	Checked By: MEM	Date: 6/25/2001		

A: 48.0' from the NE Corner of a stone pillar

B: 41.2' from a nail and a green plastic washer in a telephone pole

C: 33.5' from a nail and a green plastic washer in a power pole

110 AZ

