



Photo Science, Inc.

CONTROL REFERENCE SUMMARY

Project Name: Woodford County GIS			Agency: VMWC Planning
Quad Sheet: Keene	County: Woodford	State: KY	Date Set: 2/1/2001
Station: 101	Type of Mark: Concrete Monument	Stamping on Mark: 101	Established By: Photo Science, Inc.
Elev (FT): 754.20	Elev (M): 229.880	Datum: 1988	
Northing (FT) 160,503.47	Easting (FT) 1,496,467.12	Datum: KY North	
Northing (M) 48,921.555	Easting (M) 456,124.091	Datum: KY North	
Latitude: 37°56'22.8376"	Longitude: 84°44'56.8777"	Datum: NAD 83	
Ahead Station: 101 AZ	Ahead Bearing SW 71° 07' 41.7"	Ahead Distance: 553.75	
Back Station:	Back Bearing ° ' "	Back Distance:	
Data Entry: GB	Checked By: MEM	Date: 6/25/2001	

- A: 90.0' from a nail with a green plastic washer in a telephone pole
- B: 33.6' from a nail with a green plastic cap in a corner fence post
- C: 180.0' from a nail with a green plastic cap in a telephone pole

101

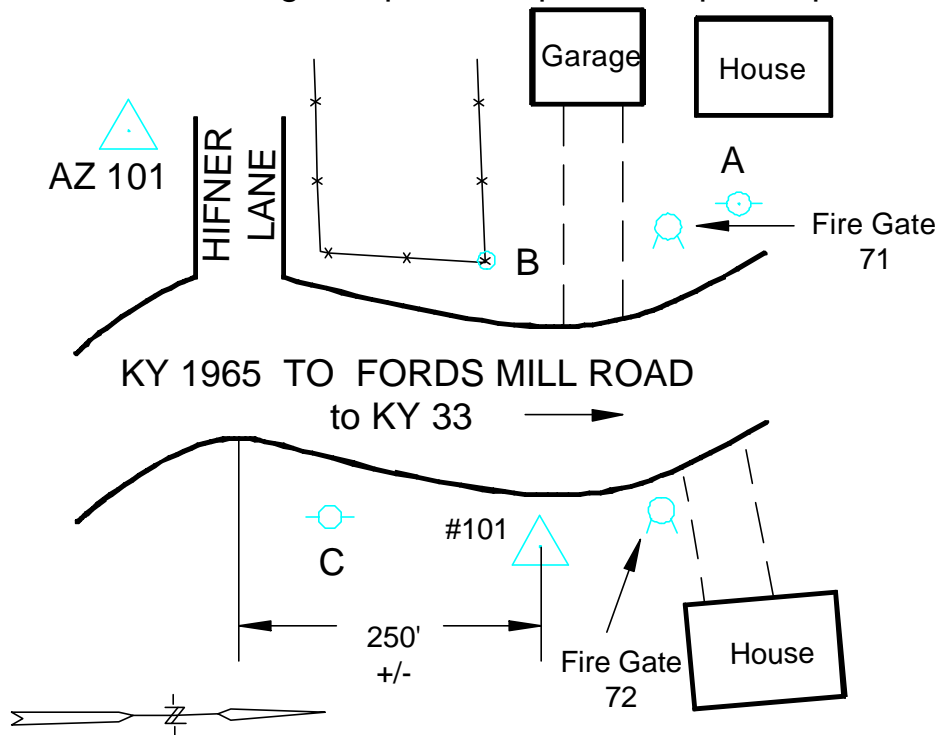




Photo Science, Inc.

CONTROL REFERENCE SUMMARY

Project Name: Woodford County GIS			Agency: VMWC Planning
Quad Sheet: Salvisa	County: Woodford	State: KY	Date Set: 2/1/2001
Station: 101 AZ	Type of Mark: Concrete Monument	Stamping on Mark: 101 AZ	Established By: Photo Science, Inc.
Elev (FT): 759.13	Elev (M): 231.383	Datum: 1988	
Northing (FT) 160,324.36	Easting (FT) 1,495,943.14	Datum: KY North	
Northing (M) 48,866.962	Easting (M) 455,964.380	Datum: KY North	
Latitude: 37°56'21.0388"	Longitude: 84°45'03.4062"	Datum: NAD 83	
Ahead Station:	Ahead Bearing ° ' "	Ahead Distance:	
Back Station: 101	Back Bearing NE 71°07'41.7"	Back Distance: 553.75	
Data Entry: GB	Checked By: MEM	Date: 6/25/2001	

- A: 34.2' from a nail and plastic washer in a 12" Hackberry tree **101 AZ**
 B: 14.5' from the center at the South end of an 18" CMP
 C: 38.0' from a nail and plastic washer in a 10" Hackberry tree

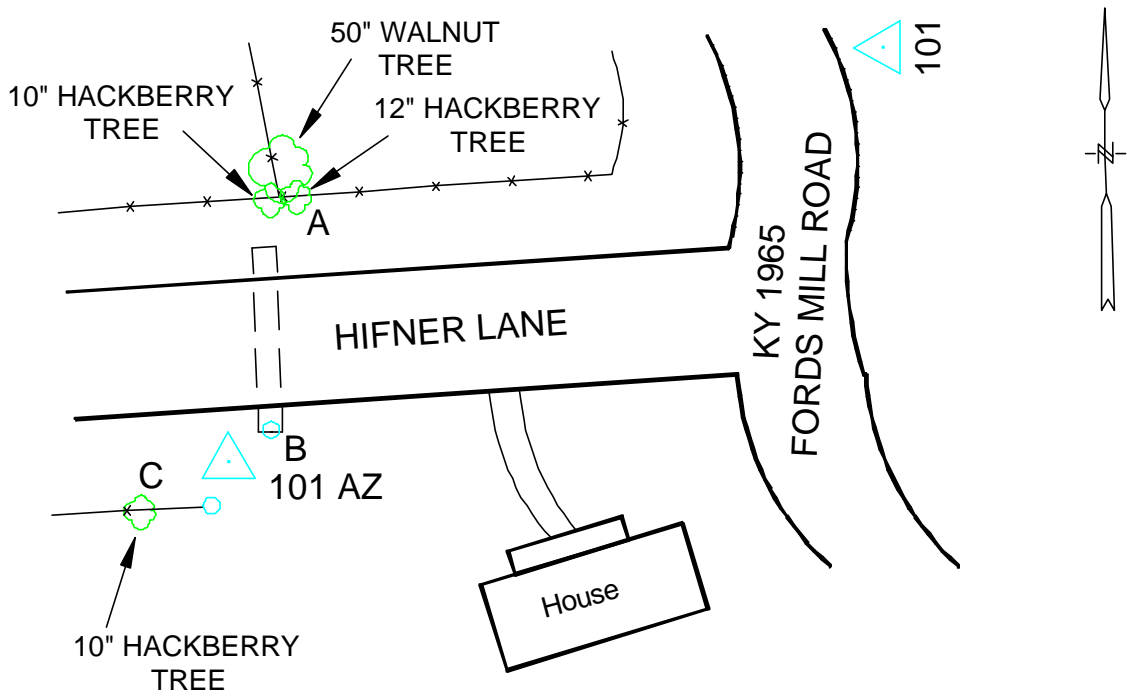




Photo Science, Inc.

CONTROL REFERENCE SUMMARY

Project Name: Woodford County GIS			Agency: VMWC Planning		
Quad Sheet: Tyrone	County: Woodford		State: KY		Date Set: 2/1/2001
Station: 102	Type of Mark: Concrete Monument		Stamping on Mark: 102		Established By: Photo Science, Inc.
Elev (FT): 854.20		Elev (M): 260.361		Datum: 1988	
Northing (FT) 186,832.33		Easting (FT) 1,493,731.49		Datum: KY North	
Northing (M) 56,946.607		Easting (M) 455,290.268		Datum: KY North	
Latitude: 38°00'42.9673"		Longitude: 84°45'32.8417"		Datum: NAD 83	
Ahead Station: 102 AZ		Ahead Bearing NE 65° 39' 25.5"		Ahead Distance: 623.29	
Back Station:		Back Bearing ° ' "		Back Distance:	
Data Entry: GB		Checked By: MEM		Date: 6/25/2001	

- A: 78.0' from mag nail in 24" Hackberry tree
- B: 31.2' mag nail in wooden fence post
- C: 85.1' mag nail in 20" Walnut tree

102

Approximately 0.59 mi. from P.I.
Scotts Ferry Road and McCowans Ferry Road

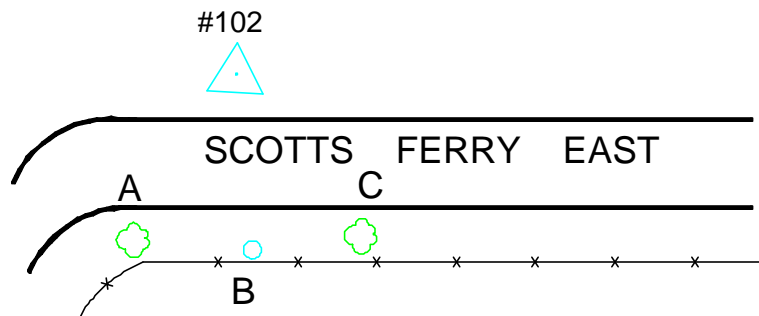
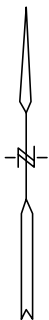




Photo Science, Inc.

CONTROL REFERENCE SUMMARY

Project Name: Woodford County GIS			Agency: VMWC Planning		
Quad Sheet: Tyrone	County: Woodford		State: KY		Date Set: 2/1/2001
Station: 102 AZ	Type of Mark: Concrete Monument		Stamping on Mark: 102 AZ		Established By: Photo Science, Inc.
Elev (FT): 860.73		Elev (M): 262.352		Datum: 1988	
Northing (FT) 187,089.25		Easting (FT) 1,494,299.37		Datum: KY North	
Northing (M) 57,024.918		Easting (M) 455,463.358		Datum: KY North	
Latitude: 38°00'45.5381"		Longitude: 84°45'25.7639"		Datum: NAD 83	
Ahead Station:		Ahead Bearing ° ' "		Ahead Distance:	
Back Station: 102		Back Bearing SW 65° 39' 25.5 "		Back Distance: 623.29	
Data Entry: GB		Checked By: MEM		Date: 6/25/2001	

- A: 28.9' mag nail in corner fence post
- B: 73.5' to an ornamental 2" Red Bud tree in yard
- C: 3.4' mag nail at edge of pavement

102 AZ

Approximately 0.70 mi. EAST from P.I. of Scotts Ferry East and McCowans Ferry Road

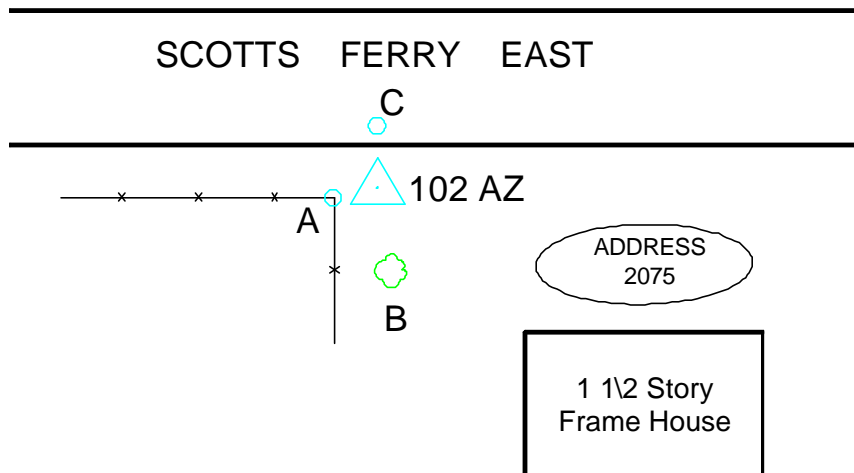
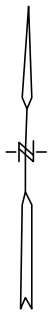




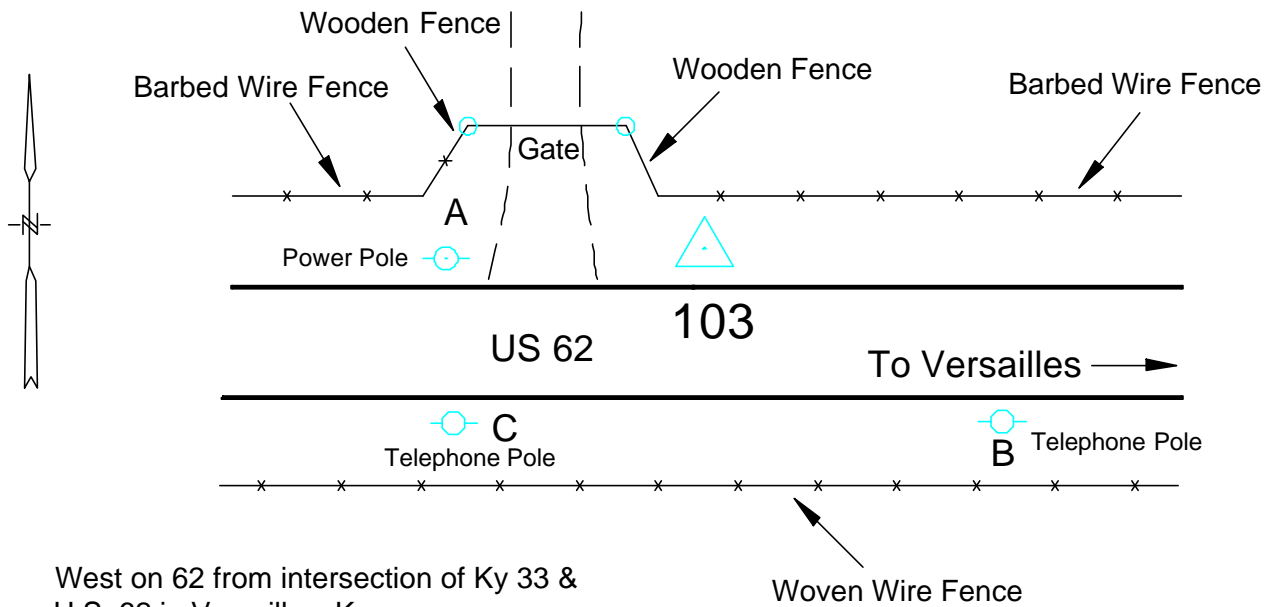
Photo Science, Inc.

CONTROL REFERENCE SUMMARY

Project Name: Woodford County GIS			Agency: VMWC Planning		
Quad Sheet: Tyrone		County: Woodford		State: KY	
Date Set: 2/1/2001		Type of Mark: Concrete Monument		Stamping on Mark: 103	
Station: 103		Established By: Photo Science, Inc.			
Elev (FT): 900.23		Elev (M): 274.390		Datum: 1988	
Northing (FT) 196,773.68		Easting (FT) 1,488,197.04		Datum: KY North	
Northing (M) 59,976.736		Easting (M) 453,603.364		Datum: KY North	
Latitude: 38°02'20.9355"		Longitude: 84°46'42.7064"		Datum: NAD 83	
Ahead Station: 103 AZ		Ahead Bearing NE 76° 47 ' 06.4 "		Ahead Distance: 944.43	
Back Station:		Back Bearing ° ' "		Back Distance:	
Data Entry: GB		Checked By: MEM		Date: 6/25/2001	

- A: 66.4' from a nail with a green plastic washer in a power pole
- B: 106.3' from a nail with a green plastic washer in a telephone pole
- C: 68.3' from a nail with a green plastic washer in a telephone pole

103



West on 62 from intersection of Ky 33 &
U.S. 62 in Versailles, Ky
2.71 mile station is on the right side of 62



Photo Science, Inc.

CONTROL REFERENCE SUMMARY

Project Name: Woodford County GIS			Agency: VMWC Planning	
Quad Sheet: Tyrone	County: Woodford	State: KY	Date Set: 2/1/2001	
Station: 103 AZ	Type of Mark: Concrete Monument	Stamping on Mark: 103 AZ	Established By: Photo Science, Inc.	
Elev (FT): 875.72	Elev (M): 266.920	Datum: 1988		
Northing (FT) 196,989.58	Easting (FT) 1,489,116.46	Datum: KY North		
Northing (M) 60,042.543	Easting (M) 453,883.604	Datum: KY North		
Latitude: 38°02'23.1218"	Longitude: 84°46'31.2295"	Datum: NAD 83		
Ahead Station:	Ahead Bearing ° ' "	Ahead Distance:		
Back Station: 103	Back Bearing SW 76°47'06.4"	Back Distance: 944.43		
Data Entry: GB	Checked By: MEM	Date: 6/25/2001		

A: 40.9' from a nail & green plastic washer in the East post of a pair of brace posts **103 AZ**

B: 79.3' from a nail & green plastic washer in a power pole

C: 90.4' from a nail & green plastic washer in a telephone pole

2.55 mi WEST on US 62
from the intersection of
Ky 33 & US 62 in
Versailles, Ky. The
station is on the left side
of US 62.

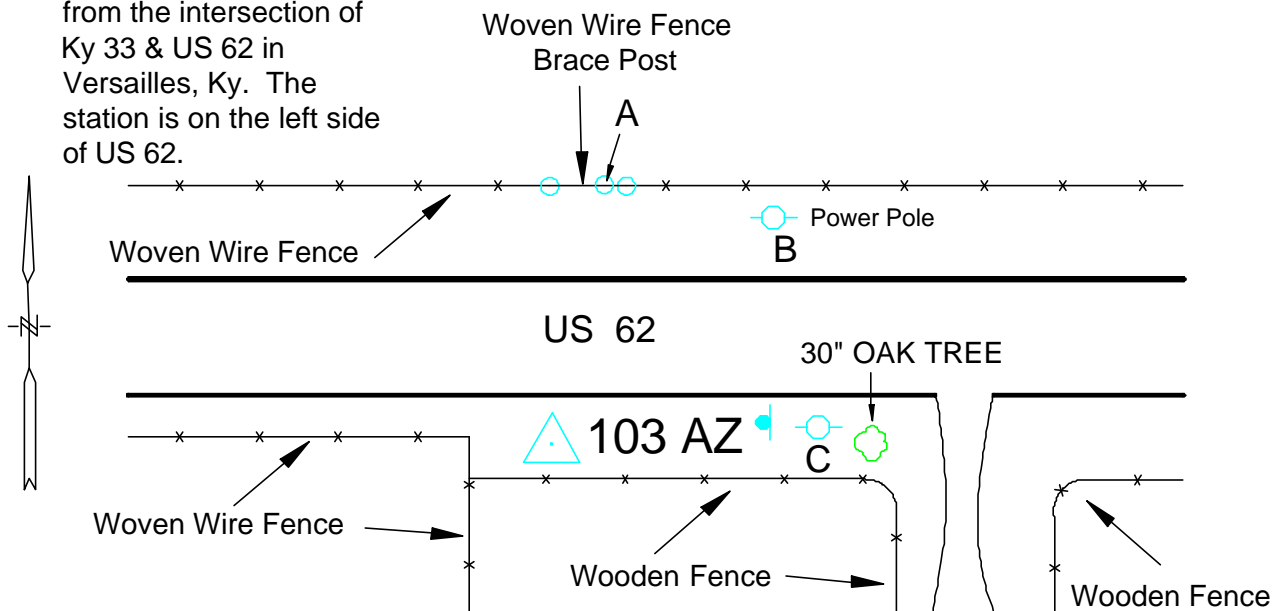




Photo Science, Inc.

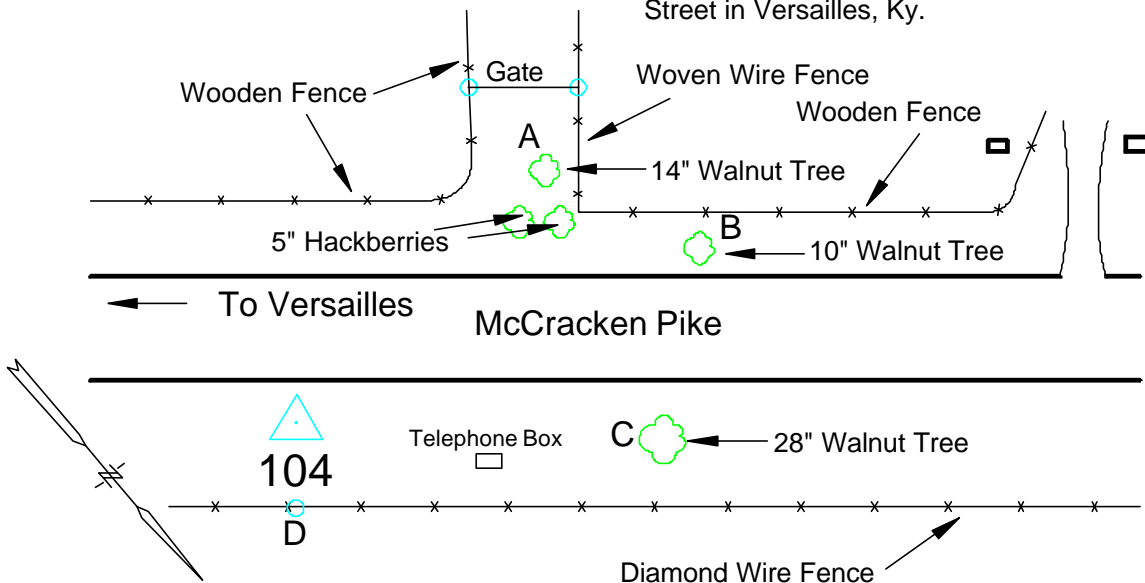
CONTROL REFERENCE SUMMARY

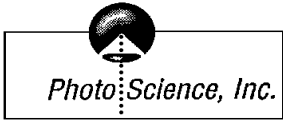
Project Name: Woodford County GIS			Agency: VMWC Planning		
Quad Sheet: Tyrone	County: Woodford	State: KY		Date Set: 2/1/2001	
Station: 104	Type of Mark: Concrete Monument	Stamping on Mark: 104		Established By: Photo Science, Inc.	
Elev (FT): 849.67		Elev (M): 258.981		Datum: 1988	
Northing (FT) 209,009.26		Easting (FT) 1,494,030.74		Datum: KY North	
Northing (M) 63,706.151		Easting (M) 455,381.479		Datum: KY North	
Latitude: 38°04'22.2164"		Longitude: 84°45'30.6326"		Datum: NAD 83	
Ahead Station: 104 AZ		Ahead Bearing SE 45° 37' 42.6"		Ahead Distance: 1008.85	
Back Station:		Back Bearing ° ' "		Back Distance:	
Data Entry: GB		Checked By: MEM		Date: 6/25/2001	

- A: 101.5' from the near face of a 14" Walnut tree
- B: 125.8' from the near face of a 10" Walnut tree
- C: 91.2' from the near face of a 28" Walnut tree
- D: 8.2' from the diamond wire fence

104

1.9 NW on Elm Street & McCracken Pike
from the intersection of Main Street and Elm
Street in Versailles, Ky.





CONTROL REFERENCE SUMMARY

Project Name: Woodford County GIS			Agency: VMWC Planning		
Quad Sheet: Tyrone	County: Woodford		State: KY		Date Set: 2/1/2001
Station: 104 AZ	Type of Mark: Concrete Monument		Stamping on Mark: 104 AZ		Established By: Photo Science, Inc.
Elev (FT): 864.05		Elev (M): 263.363		Datum: 1988	
Northing (FT) 208,303.76		Easting (FT) 1,494,751.89		Datum: KY North	
Northing (M) 63,491.112		Easting (M) 455,601.287		Datum: KY North	
Latitude: 38°04'15.2813"		Longitude: 84°45'21.5659"		Datum: NAD 83	
Ahead Station:		Ahead Bearing ° ' "		Ahead Distance:	
Back Station: 104		Back Bearing NW 45° 37' 42.6 "		Back Distance: 1008.85	
Data Entry: GB		Checked By: MEM		Date: 6/25/2001	

- A: 103.5' from the center of a fence post at the intersection of The West Fence & The North Fence
- B: 204.5' from the front face of an 18" W. Cherry Tree
- C: 9.1' from a mag nail in the East edge of McCracken Pike
- D: 10.1' from the Diamond Wire Fence

104AZ

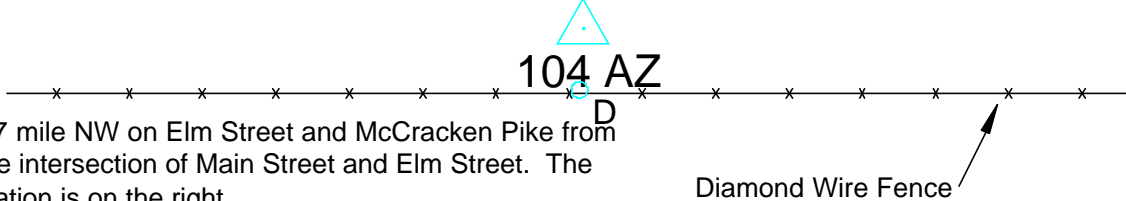
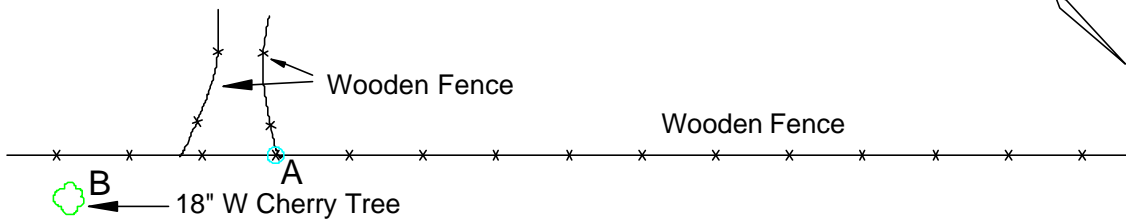




Photo Science, Inc.

CONTROL REFERENCE SUMMARY

Project Name: Woodford County GIS			Agency: VMWC Planning		
Quad Sheet: Versailles		County: Woodford		State: KY	
Station: 105		Type of Mark: Concrete Monument		Stamping on Mark: 105	
Elev (FT): 878.15		Elev (M): 267.661		Datum: 1988	
Northing (FT) 208,739.51		Easting (FT) 1,510,474.49		Datum: KY North	
Northing (M) 63,623.930		Easting (M) 460,393.544		Datum: KY North	
Latitude: 38°04'20.3968"		Longitude: 84°42'04.9818"		Datum: NAD 83	
Ahead Station: 105 AZ		Ahead Bearing SW 34° 28 ' 10.5 "		Ahead Distance: 820.56	
Back Station:		Back Bearing ° ' "		Back Distance:	
Data Entry: GB		Checked By: MEM		Date: 6/25/2001	

- A: 5.5' mag nail in fence post
- B: 51.3' mail box post at 1544 Big Sink Road
- C: 55.8' mag nail in Telephone Pole #51

105

0.89 mi. NE along Big Sink Road
from P.I. with Quail Run Road

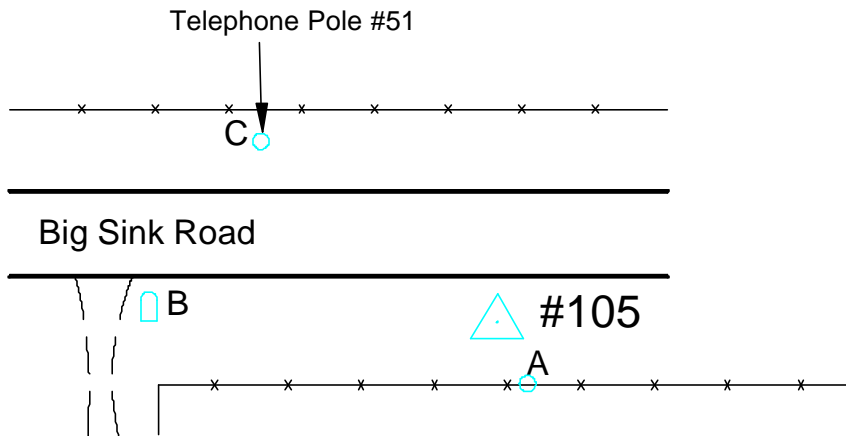




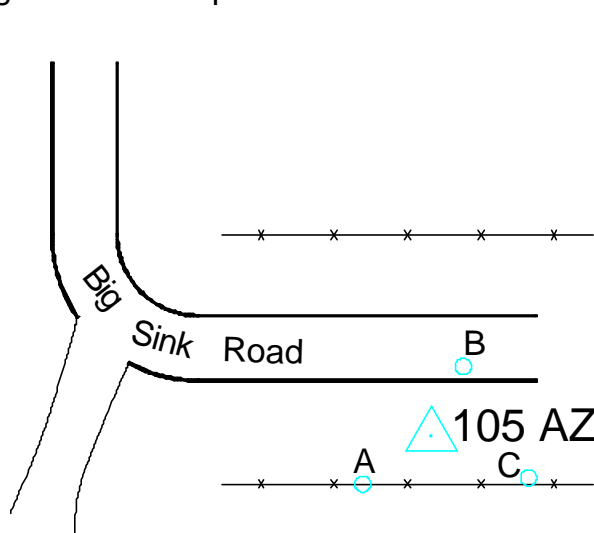
Photo Science, Inc.

CONTROL REFERENCE SUMMARY

Project Name: Woodford County GIS			Agency: VMWC Planning		
Quad Sheet: Versailles	County: Woodford		State: KY		Date Set: 2/1/2001
Station: 105 AZ	Type of Mark: Concrete Monument		Stamping on Mark: 105 AZ		Established By: Photo Science, Inc.
Elev (FT): 894.97		Elev (M): 272.786		Datum: 1988	
Northing (FT) 208,063.02		Easting (FT) 1,510,010.08		Datum: KY North	
Northing (M) 63,417.737		Easting (M) 460,251.992		Datum: KY North	
Latitude: 38°04'13.6868"		Longitude: 84°42'10.7478"		Datum: NAD 83	
Ahead Station:		Ahead Bearing ° ' "		Ahead Distance:	
Back Station: 105		Back Bearing NE 34°28'10.5"		Back Distance: 820.56	
Data Entry: GB		Checked By: MEM		Date: 6/25/2001	

- A: 11.7' mag nail in fence post
- B: 10.4' mag nail in edge of Big Sink Road
- C: 21.6' mag nail in fence post

105 AZ



0.73 mi. N.E. along Big Sink Road
from P.I. with
Quail Run Road