

# Flood Map Modernization

## A POWERFUL TOOL FOR RISK MANAGEMENT

### WHY MODERNIZE?

Flood Map Modernization (Map Mod) is based on a solid foundation. The National Flood Insurance Program (NFIP) is the cornerstone of the Nation's strategy for preparing communities for flood disasters. As part of the Department of Homeland Security, the Federal Emergency Management Agency (FEMA) is responsible for administering the NFIP.

FEMA and its partners provide flood hazard data and maps in support of the NFIP. Up-to-date flood hazard data and maps are needed to support an actuarially sound flood insurance system, enable wise floodplain management, and increase the Nation's flood hazard awareness. Map Mod builds upon recommendations made by the Technical Mapping Advisory Council in 2000.

### WHAT'S DIFFERENT?

Working with FEMA, the National Service Provider, is building a state-of-the-art geospatial infrastructure that will enable more efficient flood hazard mapping. This infrastructure, known as the **Mapping Information Platform (MIP)**, will provide easy access to the latest flood hazard data and maps via the Internet.

Digital Flood Insurance Rate Map (DFIRM) data is stored on the MIP in Geographic Information System (GIS) format. GIS allows for more powerful analytical application of the hazard

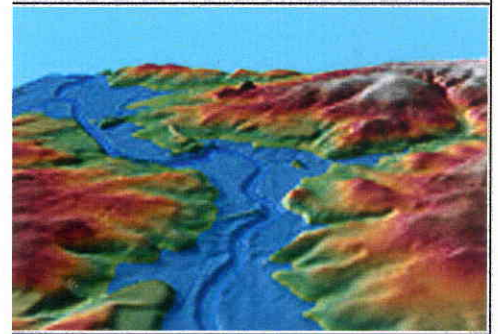
data and enables data sharing using industry standard Web Services. The MIP infrastructure allows users to view DFIRMs in a web browser or access flood hazard information as a data layer that can be shared using Web Services. This allows other Federal agencies and stakeholders who want to leverage Map Mod data to access it on demand.

### HOW WILL IT HELP?

Map Mod enhances the ability to manage risks and other issues locally. Reliable flood data reflecting current conditions enables citizens to more reliably know their flood risk, and to purchase flood insurance based on actual risk. It also provides communities with a more comprehensive approach to disaster mitigation planning, economic development, and emergency response. Communities will be enabled to manage flood risks, water resources, land use, and other responsibilities more effectively. Communities will be empowered to update maps and data as risks change. Goals and outcomes will be aligned across mapping partners.

### WHO WILL MAKE IT HAPPEN?

Map Mod is a collaborative process and a new way of doing business for government officials, cutting across all layers of government. Officials and other stakeholders will be active in mapping operations (e.g., collecting, updating, and adopting data). Leveraging



### WHO BENEFITS?

Map Mod touches a broad stakeholder community who will see different benefits.

- Community planners and local officials will gain a greater understanding of the flood hazards and risks that affect their community.
- Builders and developers will have detailed information for making well-informed decisions on where to build and how they can affect flood zones.
- Insurance agents and lending institutions will clearly understand map changes and what they need to do.
- Home and business owners will be better informed about their current flood risk.



# Flood Map Modernization

**A POWERFUL TOOL FOR RISK MANAGEMENT**



Digital Flood Hazard Data

of partnerships will allow States and communities to choose their level of involvement with Map Mod.

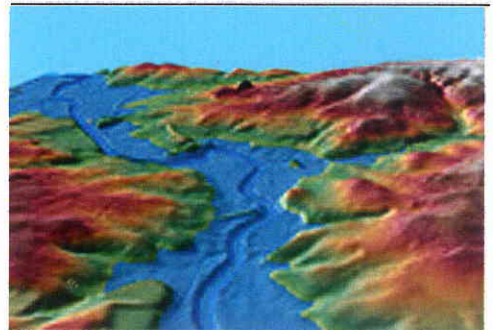
Developing and maintaining effective partnerships and leveraging resources are fundamental to the success of Map Mod, and a key element is the **Cooperating Technical Partners (CTP) Program**. Fostering collaboration with Federal, State, and local partners, Map Mod will help improve and maintain the quality and reliability of flood hazard data.

## HOW WILL IT HAPPEN?

The **Multi-Year Flood Hazard Identification Plan (MHIP)** describes FEMA's strategy for updating flood maps used for NFIP purposes. It provides, for the first time, a five-year forecast of flood mapping activities thereby enabling mapping partners and flood map users to better plan map updates and track their progress. The MHIP process also increases opportunities for sharing common data sets and leveraging resources across all levels of government and industry.

The release of the MHIP is a significant step forward for Map Mod. The MHIP is developed and updated through a collaborative process with local, State, regional, and national participants. FEMA is committed to a collaborative planning process that results in high-quality, reliable, and timely products. FEMA plans to update the MHIP annually.

## FLOOD MAP MODERNIZATION



## ADDITIONAL INFORMATION FOR FLOOD HAZARD MAPPING AND MAP MODERNIZATION

To access the MIP: [hazards.fema.gov](http://hazards.fema.gov)

For more information on flood hazard mapping: [www.fema.gov/fhm](http://www.fema.gov/fhm)

For information on the Cooperating Technical Partners Program: [www.fema.gov/fhm/ctp\\_main.shtm](http://www.fema.gov/fhm/ctp_main.shtm)

To purchase or order current Flood Insurance Rate Maps or Flood Insurance Study reports: [store.msc.fema.gov](http://store.msc.fema.gov)

For Frequently Asked Questions and Answers: [www.fema.gov/fhm/fq\\_main.shtm](http://www.fema.gov/fhm/fq_main.shtm)

For more information on the MHIP: [www.fema.gov/fhm/mh\\_main.shtm](http://www.fema.gov/fhm/mh_main.shtm)

